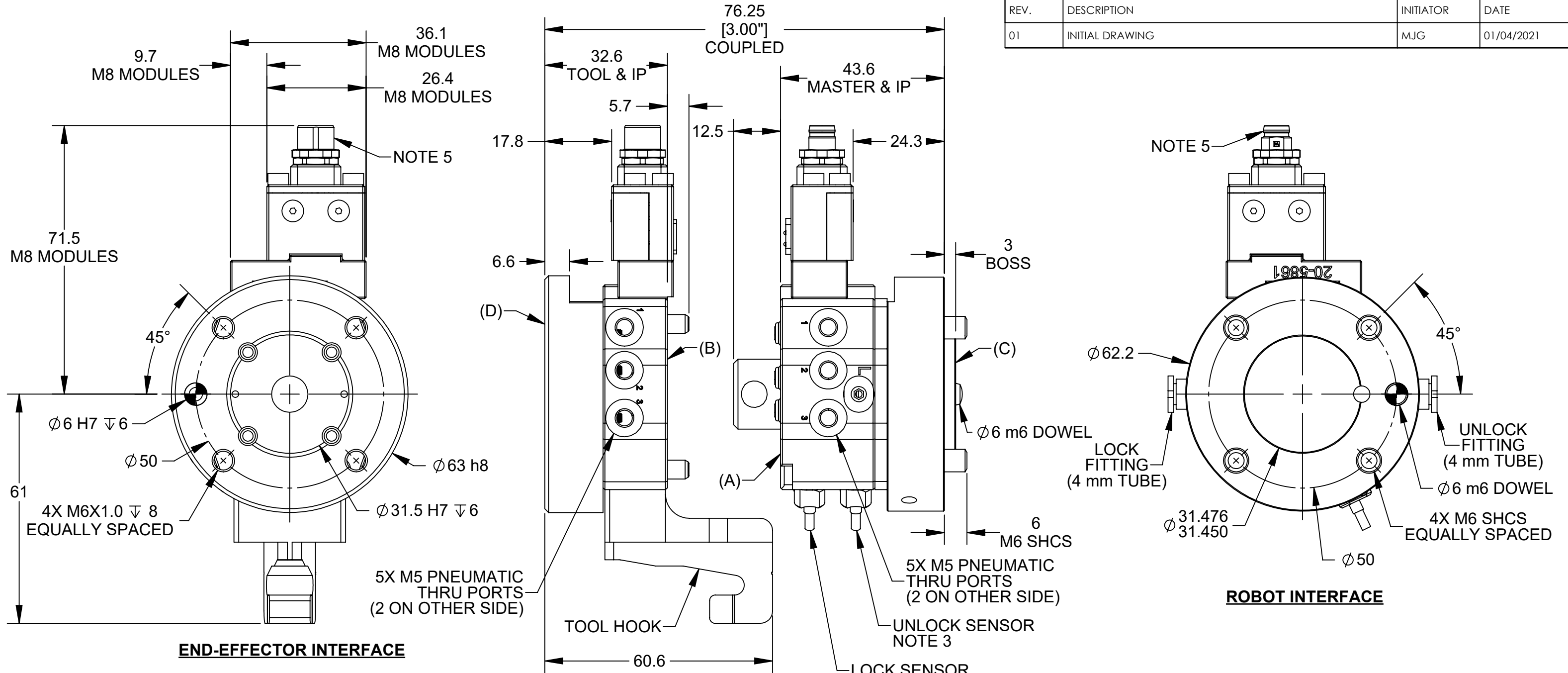


REV.	DESCRIPTION	INITIATOR	DATE
01	INITIAL DRAWING	MJG	01/04/2021

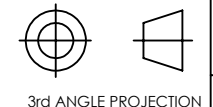


- PART NUMBERS:**
- (A) QC-7 MASTER: 9120-007CM-M8-0-SM
 - (B) QC-7 TOOL: 9120-007DT-M8-H1
 - (C) MASTER INTERFACE PLATE: 9120-007M-IP-10719-E060A15
 - (D) TOOL INTERFACE PLATE: 9120-007T-IP-11291

- NOTES:**
1. QC-7 COBOT KIT (GENERAL) PART NUMBER:
 - 9120-COB-ISO50-007-01: COBOT KIT, GENERAL ISO 50, QC-7 WITH M8 MODULES, MASTER IP BC50, TOOL IP BC50
 2. KIT CONTAINS FASTENERS AND TOOLS TO ADAPT A QC-7 TOOL CHANGER TO ISO 9409-1-50-4-M6 ROBOT WRISTS.
 3. LOCK AND UNLOCK SENSORS ARE PNP WITH .2m LONG CABLES WITH STRAIGHT M8 CONNECTORS. EXTENSION CABLES, 5m LONG, (8590-9909999-15) ARE INCLUDED. SEE SHEET 3 FOR WIRING DETAILS.
 4. CUSTOMER IS RESPONSIBLE FOR PNEUMATIC EQUIPMENT TO CONNECT TO THE TOOL CHANGER MASTER'S LOCK AND UNLOCK FITTINGS.
 5. M8 MODULES ELECTRICAL RATING = 30 VDC, 1.5A SEE SHEET 3 FOR WIRING DETAILS. REFER TO 9630-20-M8-011 FOR SPECIFIC M8 MODULE DETAILS.
 6. REFER TO 9630-20-007CM 007DT FOR SPECIFIC QC-7 TOOL CHANGER DETAILS.
 7. REFER TO 9630-20-TSS-MMH-11392 FOR SPECIFIC TOOL HANGER AND RAIL ADAPTER DETAILS.

NOTES: UNLESS OTHERWISE SPECIFIED.

DO NOT SCALE DRAWING. ALL DIMENSIONS ARE IN MILLIMETERS.



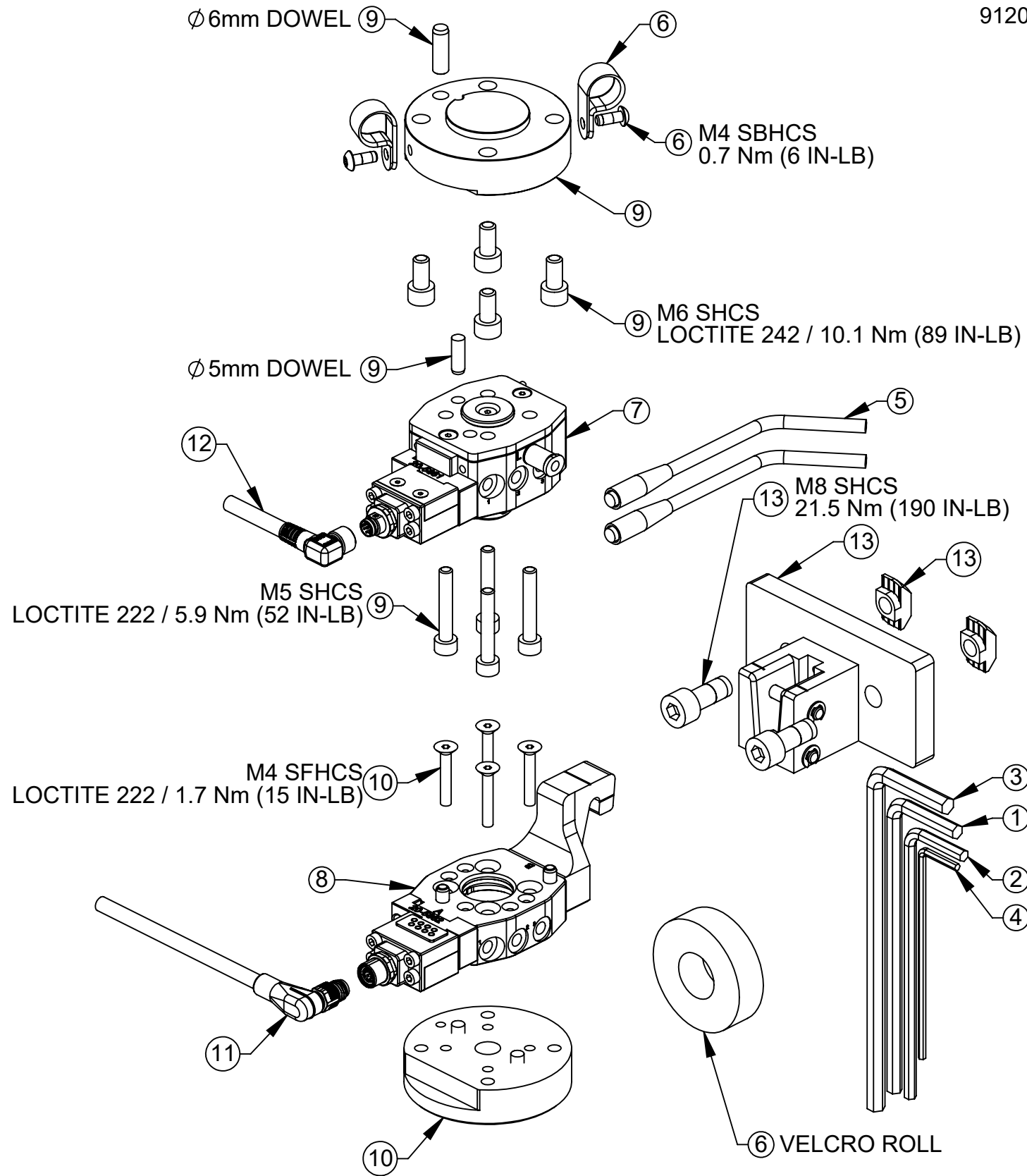
1031 Goodworth Drive, Apex, NC 27539, USA
 Tel: +1.919.772.0115 www.ati-ia.com
 Fax: +1.919.772.8259 ISO 9001 Registered Company

PROPERTY OF ATI INDUSTRIAL AUTOMATION, INC. NOT TO BE REPRODUCED IN ANY MANNER EXCEPT ON ORDER OR WITH PRIOR WRITTEN AUTHORIZATION OF ATI.

DRAWN BY: M. GALA 11/19/20		TITLE	
CHECKED BY: D. FAUST 12/10/20		QC-7 COBOT KIT (GENERAL ISO 50) DRAWING	
PROJECT # 200408-1	SHEET 1 OF 3	SCALE	SIZE
		1:1	B
		DRAWING NUMBER	REVISION
		9630-20-COB-ISO50-007-01	01

KIT COMPONENTS

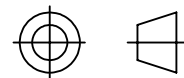
9120-COB-ISO50-007-01



ITEM NO.	QTY	PART NUMBER	DESCRIPTION
1	1	3690-0000103-00	ALLEN KEY, 5mm, HIGH VISIBILITY BLUE
2	1	3690-0000105-00	ALLEN KEY, 4mm, HIGH VISIBILITY BLUE
3	1	3690-0000106-00	ALLEN KEY, 6mm, HIGH VISIBILITY BLUE
4	1	3690-0000109-00	ALLEN KEY, 2.5mm, HIGH VISIBILITY BLUE
5	2	8590-9909999-15	HIGH-FLEX CABLE WITH STRAIGHT SCREW-ON CONNECTOR, 5M (16.4 FT.) LONG WITH FLYING LEADS (TYPE - BB)
6	1	9005-20-9111	QC-7M CABLE AND TUBING MANAGEMENT KIT FOR IP-10719
7	1	9120-007CM-M8-0-SM	QC-7 MASTER, 20mm BOSS, PNP SENSORS WITH .2M POTTED CABLE AND STRAIGHT M8 CONNECTOR, M8 MODULE
8	1	9120-007DT-M8-H1	QC-7 TOOL, M8 MODULE, TOOL HOOK
9	1	9120-007M-IP-10719-E060A15	IP KIT FOR QC-7 MASTER TO BC50, (4)M6, BOSS 31.5, DOWEL 6; INCLUDES MOUNTING SCREWS WITH 6.0mm ENGAGEMENT
10	1	9120-007T-IP-11291	IP KIT FOR QC-7 TOOL TO BC50, (4) M6, RECESS 31.5, DOWEL 6
11	1	9120-C-0311208-00-2	CABLE, MALE 8-PIN M8 THREAD CONNECTOR, RIGHT ANGLE, FLYING LEADS, 2 METERS
12	1	9120-C-0321208-00-5	CABLE, FEMALE 8-PIN M8 THREAD CONNECTOR, RIGHT ANGLE, FLYING LEADS, 5 METER
13	1	9120-TSS-MMH-11392	QC-7 POST HANGER AND RAIL ADAPTER MODULE

NOTES: UNLESS OTHERWISE SPECIFIED.

DO NOT SCALE DRAWING. ALL DIMENSIONS ARE IN MILLIMETERS.



3rd ANGLE PROJECTION

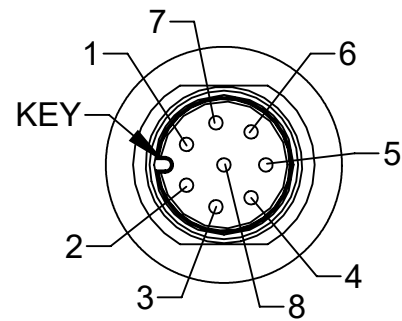


1031 Goodworth Drive, Apex, NC 27539, USA
Tel: +1.919.772.0115 www.ati-ia.com
Fax: +1.919.772.8259 ISO 9001 Registered Company

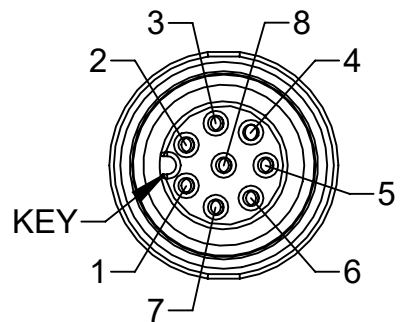
PROPERTY OF ATI INDUSTRIAL AUTOMATION, INC. NOT TO BE REPRODUCED IN ANY MANNER EXCEPT ON ORDER OR WITH PRIOR WRITTEN AUTHORIZATION OF ATI.

DRAWN BY: M. GALA 11/19/20		TITLE	
CHECKED BY: D. FAUST 12/10/20		QC-7 COBOT KIT (GENERAL ISO 50) DRAWING	
PROJECT # 200408-1	SHEET 2 OF 3	SCALE	SIZE
		1:2	B
		DRAWING NUMBER	REVISION
		9630-20-COB-ISO50-007-01	01

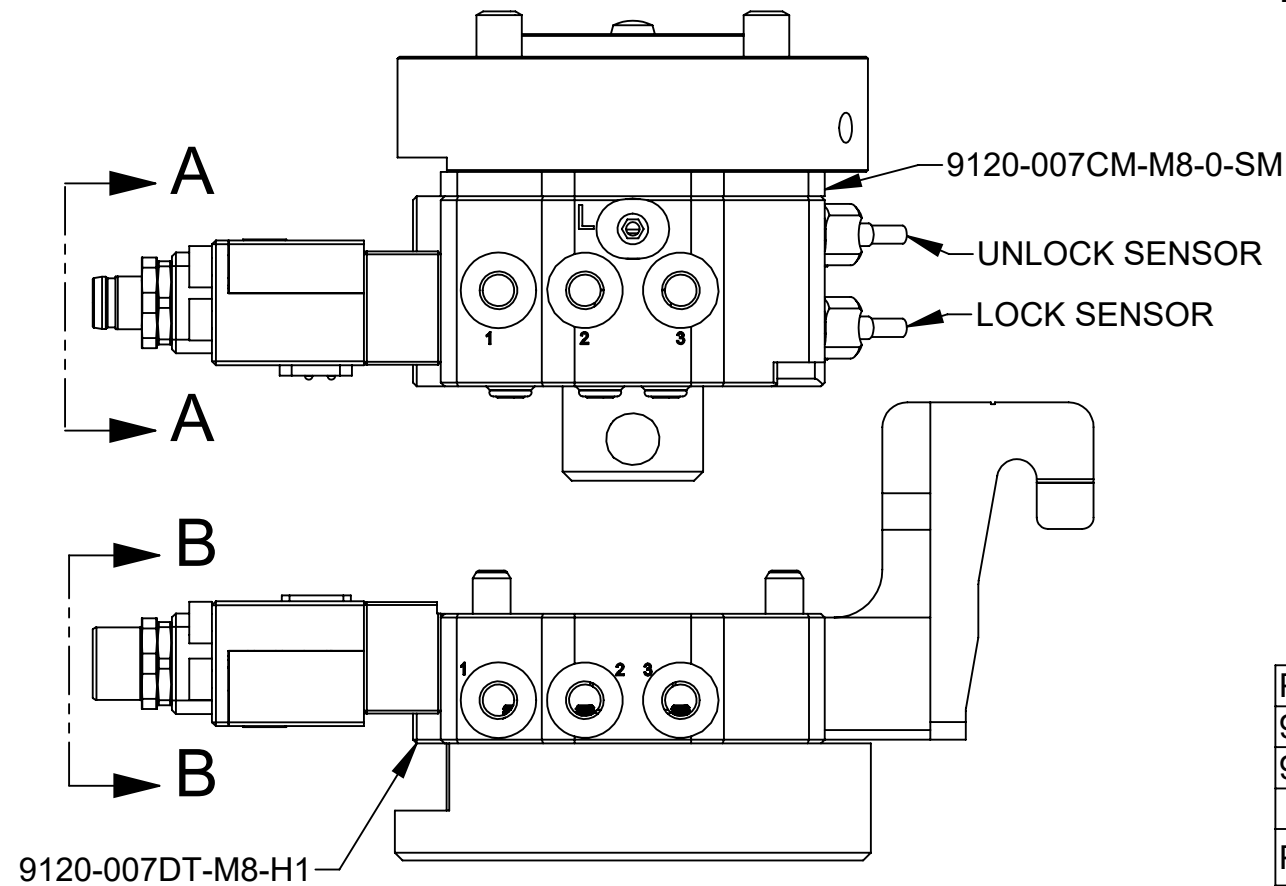
WIRING INFORMATION



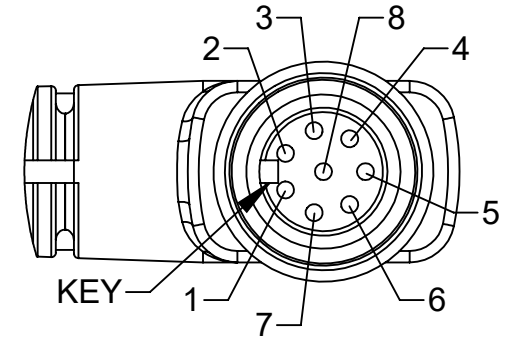
VIEW A-A
MASTER 8-PIN
MALE M8 CONNECTOR
PHOENIX #1424232
SCALE 3 : 1



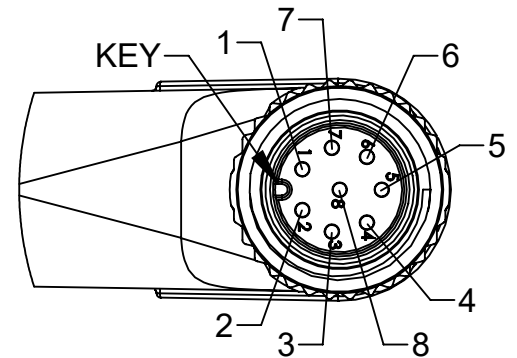
VIEW B-B
TOOL 8-PIN
FEMALE M8 CONNECTOR
PHOENIX #1424231
SCALE 3 : 1



MASTER CORDSET 8-PIN
FEMALE M8 CONNECTOR
BINDER #77-3408-0000-50008-0500
SCALE 3 : 1



TOOL CORDSET 8-PIN
MALE M8 CONNECTOR
BINDER #77-3403-0000-50008-0200
SCALE 3 : 1

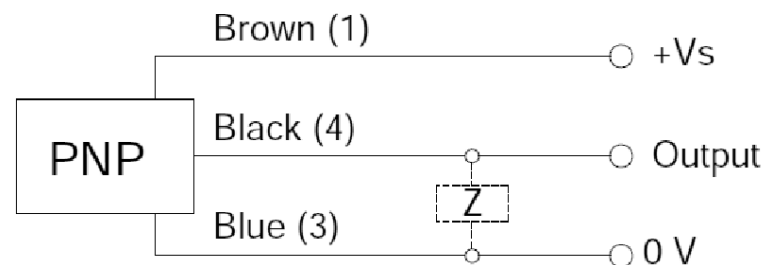


PART NUMBER	REFERENCE
9120-C-0311208-00-2	BINDER #77-3403-0000-50008-0200
9120-C-0321208-00-5	BINDER #77-3408-0000-50008-0500

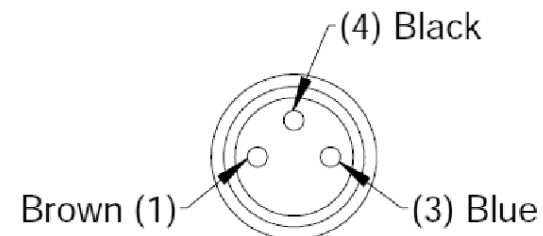
PIN	COLOR
1	WHITE
2	BROWN
3	GREEN
4	YELLOW
5	GREY
6	PINK
7	BLUE
8	RED

LOCK/UNLOCK SENSOR CONNECTIONS

PNP (Current Sourcing)

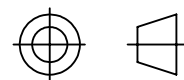


Connector



NOTES: UNLESS OTHERWISE SPECIFIED.

DO NOT SCALE DRAWING.
ALL DIMENSIONS ARE IN MILLIMETERS.



3rd ANGLE PROJECTION



1031 Goodworth Drive, Apex, NC 27539, USA
Tel: +1.919.772.0115 www.ati-ia.com
Fax: +1.919.772.8259 ISO 9001 Registered Company

PROPERTY OF ATI INDUSTRIAL AUTOMATION, INC. NOT TO BE REPRODUCED IN ANY MANNER EXCEPT ON ORDER OR WITH PRIOR WRITTEN AUTHORIZATION OF ATI.

DRAWN BY: M. GALA 11/19/20

CHECKED BY: D. FAUST 12/10/20

PROJECT # 200408-1 SHEET 3 OF 3

TITLE

QC-7 COBOT KIT (GENERAL ISO 50) DRAWING

SCALE
1:1

SIZE
B

DRAWING NUMBER
9630-20-COB-ISO50-007-01

REVISION
01