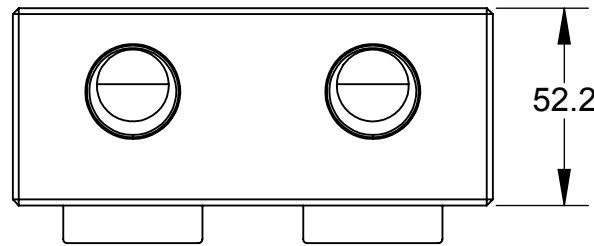
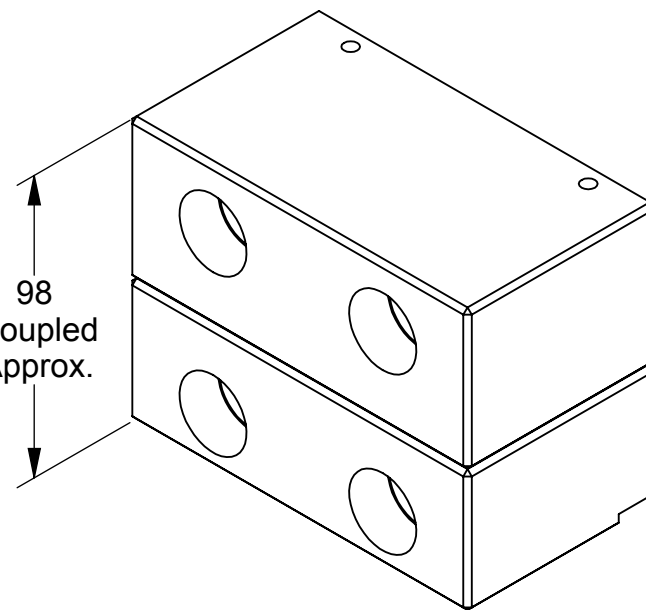


Rev.	Description	Initiator	Date
09	ECO 14949; Replaced 3700-20-9607 with 3700-20-9609, replaced 3700-20-6807 with 3700-20-9610, replaced 3410-0001096-01 with 3410-0001450-01, replaced kit 9121-AD2-T with 9005-20-8554, and added Note 2. Moved Magnalube call out from Springs to Bores.	SZJ	11/2/2016

AD2 Master Module  
9121-AD2-M



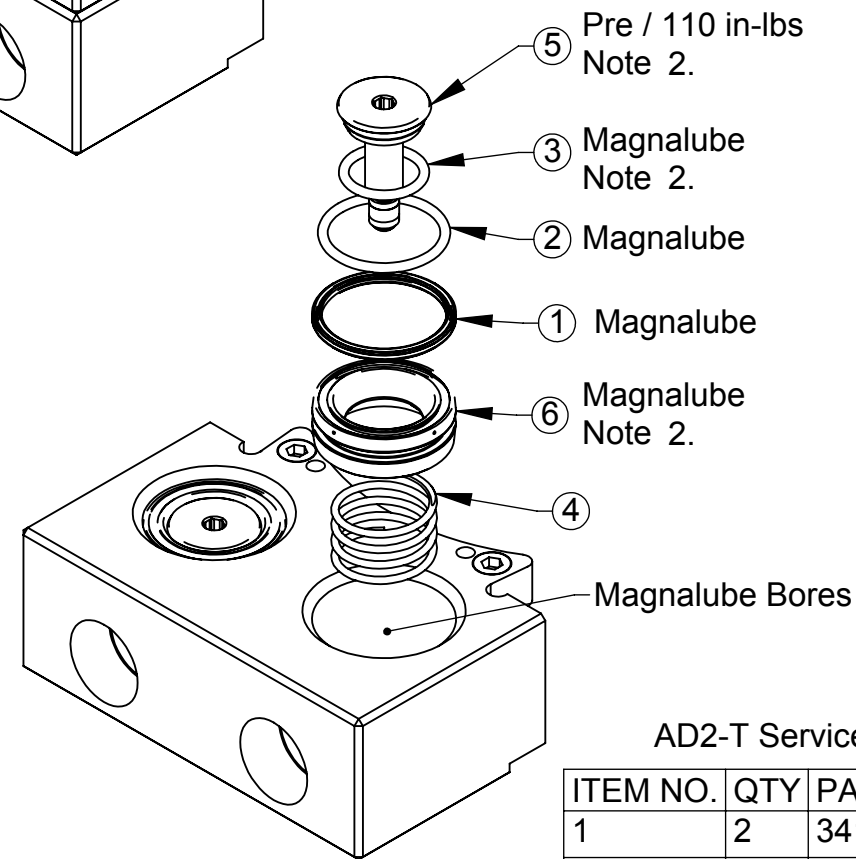
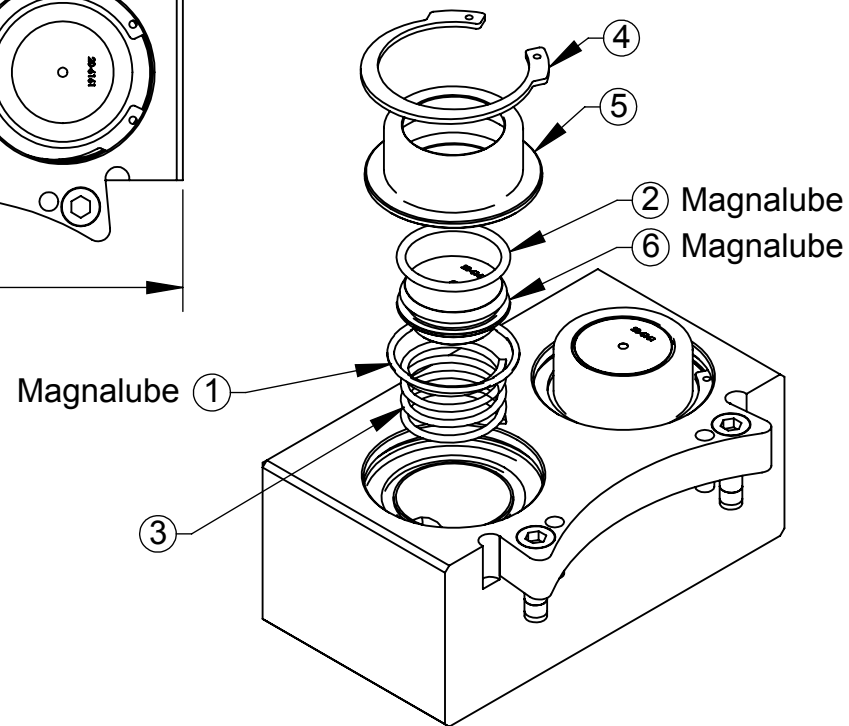
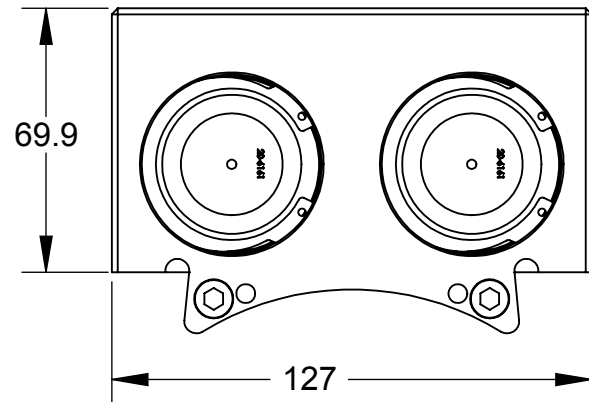
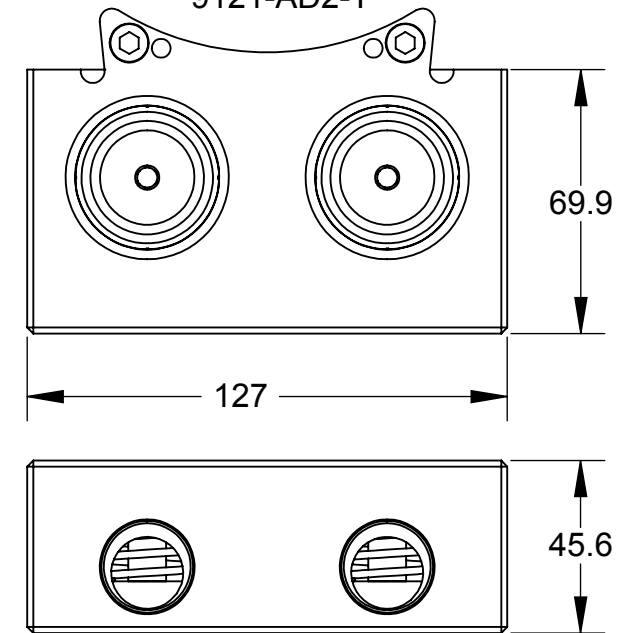
98  
Coupled  
Approx.



Notes:

1. Significant forces are encountered when using the AD2 Module. Assistance is required to overcome these forces when coupling the tool changer.
2. See Manual for replacement parts, including older valve designs which require a spanner wrench for Stem installation. New Stems install with a hex wrench.

AD2 Tool Module  
9121-AD2-T



AD2-T Serviceable Parts

ITEM NO.	QTY	PART NUMBER	DESCRIPTION
1	2	3410-0001099-01	Quad-Ring 1-5/16"ID
2	2	3410-0001341-01	O-Ring, 1-3/16IDx3/32, AS568-123 Buna-N, D90
3	2	3410-0001450-01	O-Ring, AS568-116, Buna-N, A90
4	2	3610-2015001-20	Spring
5	2	3700-20-9609	3/4" Valve Stem, Tool, Conical Seal
6	2	3700-20-9610	3/4" Valve Piston, Tool, Conical Seal

Note: Seals are supplied in kit: 9005-20-8554.

AD2-M Serviceable Parts

ITEM NO.	QTY.	PART NUMBER	DESCRIPTION
1	2	3410-0001015-01	O-Ring Master AS568-026
2	2	3410-0001249-01	O-RING, Dash #119 Nitrile 90 Durometer
3	2	3610-2015100-20	Spring, 1.1 inch dia, 2.5" long, 10.8#/in SS
4	2	3690-8500001-11	Retaining Ring, Internal Inverted Truarc # 5008-187
5	2	3700-20-4924	3/4" Valve Master Stem
6	2	3700-20-6161	3/4" Valve Piston

Note: Seals and retaining ring are supplied in kit: 9121-AD2-M-Seal.

NOTES: UNLESS OTHERWISE SPECIFIED.

DO NOT SCALE DRAWING. ALL DIMENSIONS ARE IN MILLIMETERS.



3rd ANGLE PROJECTION



1031 Goodworth Drive, Apex, NC 27539, USA  
Tel: +1.919.772.0115 Email: info@ati-ia.com  
Fax: +1.919.772.8259 www.ati-ia.com  
ISO 9001 Registered Company

PROPERTY OF ATI INDUSTRIAL AUTOMATION, INC. NOT TO BE REPRODUCED IN ANY MANNER EXCEPT ON ORDER OR WITH PRIOR WRITTEN AUTHORIZATION OF ATI.

DRAWN BY: B. Digeso, 1/27/05		TITLE	
CHECKED BY: D.Norton 11/06		AD2 Module Drawing	
PROJECT # 040716-1	SHEET 1 OF 1	SCALE 1:2	SIZE B
		DRAWING NUMBER 9630-20-AD2	REVISION 09