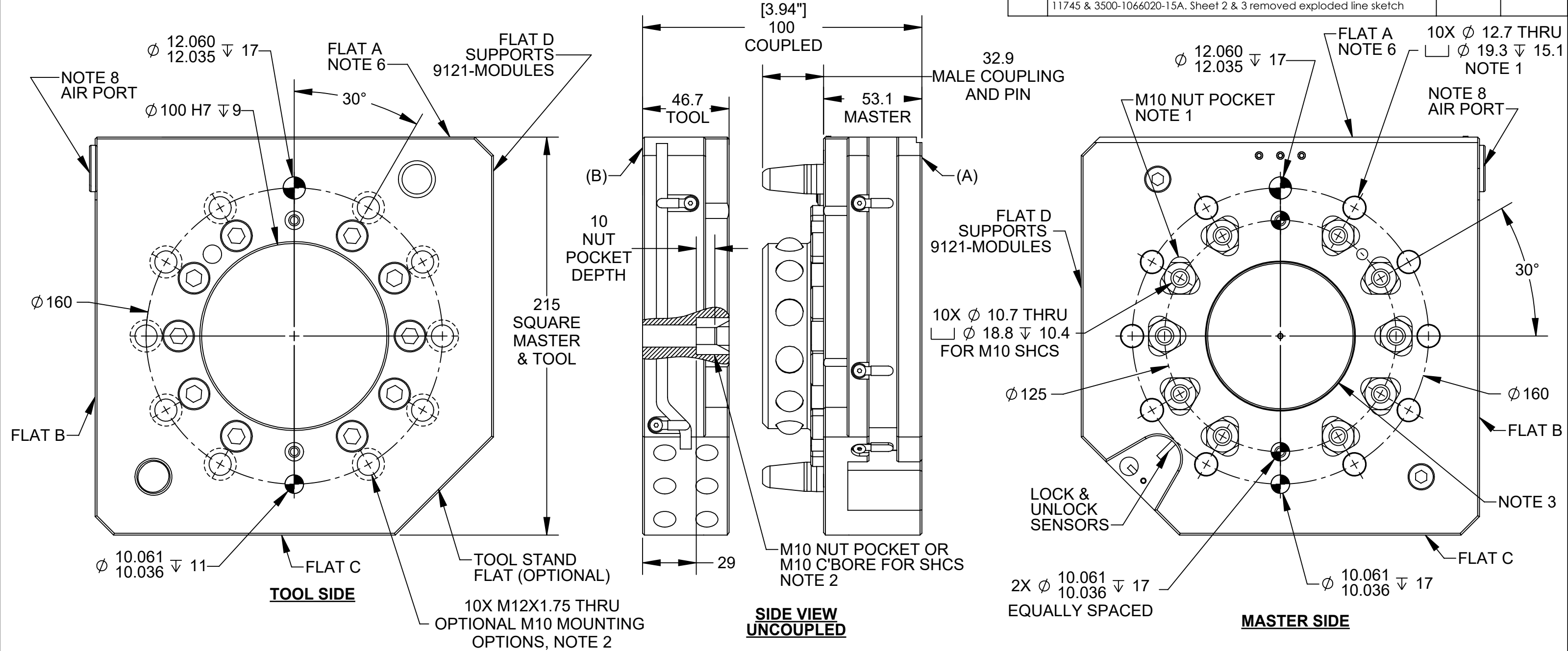


PART NUMBERS:  
(A) MASTER: 9128-835AM-0-0-0-0-Sx (NOTES 3, 4)  
(B) TOOL: 9128-835CT-0-0-0-0

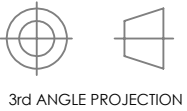
REV.	DESCRIPTION	INITIATOR	DATE
02	ECO 20742; BOM changes for 9128-835AMX removed 3700-20-11490, 3540-0110032-11 & added 3700-20-11738. BOM changes for 9128-835CT-0-0-0-0 removed 3700-20-11499, 3540-0110038-11, & 3500-1066012. Added 3700-20-11745 & 3500-1066020-15A. Sheet 2 & 3 removed exploded line sketch	DS	6/15/2022



- NOTES:
- MASTER MOUNTING OPTIONS: (NO HARDWARE IS INCLUDED)
    - 10X M10 BC125, 2X M10 DOWEL (BOSS REQUIRED IF ONLY USING ONE DOWEL)
    - 10X M10 BC160, 1X M10 DOWEL (PRECISION WASHERS REQUIRED, BOSS REQUIRED)
    - 10X M12 BC160, 1X M12 DOWEL (BOSS REQUIRED)CONTACT ATI FOR FASTENER KIT OPTIONS
  - TOOL MOUNTING OPTIONS: (HARDWARE NOT INCLUDED)
    - 10X M10 BC160, 1X M10 DOWEL, BOLT DOWN FROM COUPLING SIDE
    - 10X M10 BC160, 1X M10 DOWEL, BOLT UP FROM TOOL SIDE (M10 NUTS REQUIRED)
    - 10X M12 BC160, 1X M12 DOWEL, BOLT UP FROM TOOL SIDE
  - "AM" IN PART NUMBER INDICATES NO BOSS SPECIFIED. MASTER SIDE MOUNTING BOSSES AVAILABLE
  - "-Sx" IN MASTER PART NUMBER DENOTES SENSOR OPTIONS ARE AVAILABLE
  - INTERFACE PLATES ARE AVAILABLE TO ADAPT THE TOOL CHANGER TO SPECIFIC MOUNTING PATTERNS
  - FLAT A IS RESERVED FOR VALVE/CONTROL MODULE OR AIR ADAPTER
  - CONTACT ATI FOR FULL PART NUMBERS AND LIST OF OPTIONS
  - AIR PORT IS 1/2" G THREAD, PLUG INSTALLED ON TOOL SIDE.

NOTES: UNLESS OTHERWISE SPECIFIED.

DO NOT SCALE DRAWING. ALL DIMENSIONS ARE IN MILLIMETERS.



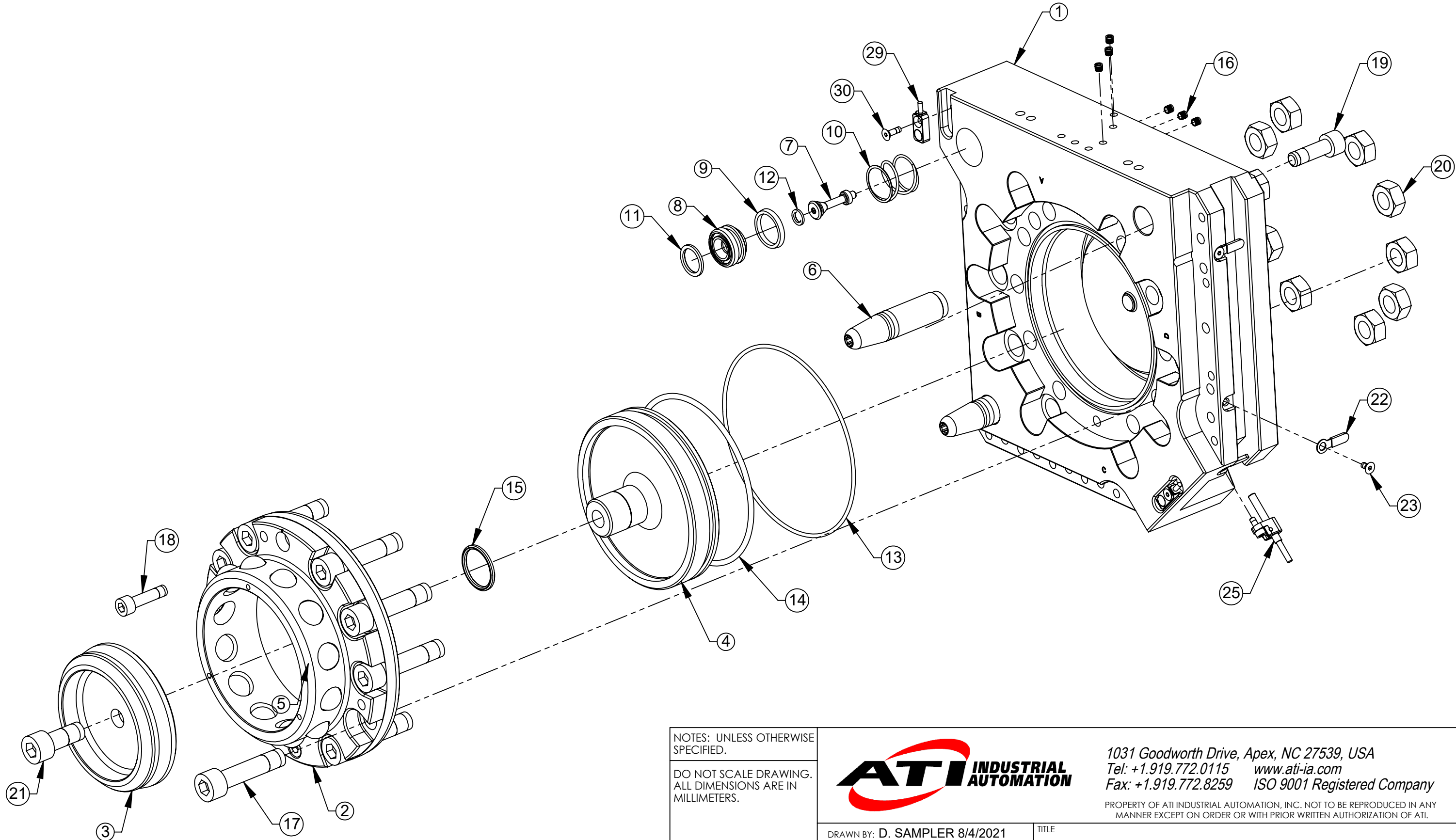
1031 Goodworth Drive, Apex, NC 27539, USA  
Tel: +1.919.772.0115 www.ati-ia.com  
Fax: +1.919.772.8259 ISO 9001 Registered Company

PROPERTY OF ATI INDUSTRIAL AUTOMATION, INC. NOT TO BE REPRODUCED IN ANY MANNER EXCEPT ON ORDER OR WITH PRIOR WRITTEN AUTHORIZATION OF ATI.

DRAWN BY: D. SAMPLER 8/4/2021		TITLE	
CHECKED BY: J. WEAVER, 8/6/21		QC-835 TOOL CHANGER DRAWING	
PROJECT # 180829-3	SHEET 1 OF 3	SCALE 1:2	SIZE B
DRAWING NUMBER 9630-20-835		REVISION 02	

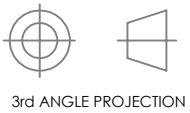
QC-835 Master Assembly

9128-835AM-0-0-0-0-Sx



NOTES: UNLESS OTHERWISE SPECIFIED.

DO NOT SCALE DRAWING. ALL DIMENSIONS ARE IN MILLIMETERS.



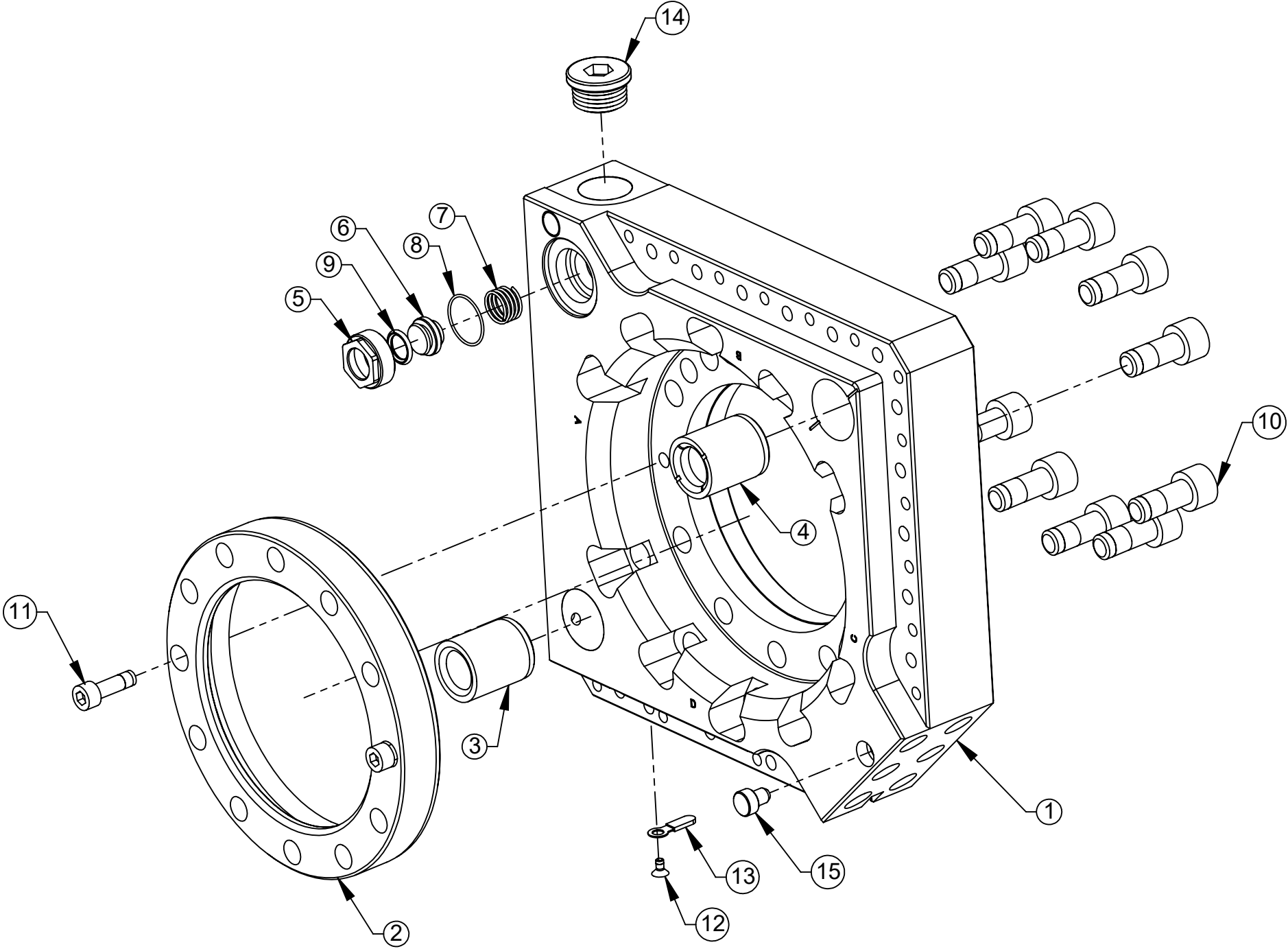
1031 Goodworth Drive, Apex, NC 27539, USA  
Tel: +1.919.772.0115    www.ati-ia.com  
Fax: +1.919.772.8259    ISO 9001 Registered Company

PROPERTY OF ATI INDUSTRIAL AUTOMATION, INC. NOT TO BE REPRODUCED IN ANY MANNER EXCEPT ON ORDER OR WITH PRIOR WRITTEN AUTHORIZATION OF ATI.

DRAWN BY: D. SAMPLER 8/4/2021		TITLE		
CHECKED BY: J. WEAVER, 8/6/21		QC-835 TOOL CHANGER DRAWING		
PROJECT # 180829-3	SHEET 2 OF 3	SCALE 1:5	SIZE B	DRAWING NUMBER 9630-20-835
				REVISION 02

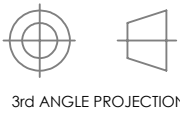
QC-835 Tool Assembly

9128-835CT-0-0-0-0



NOTES: UNLESS OTHERWISE SPECIFIED.

DO NOT SCALE DRAWING.  
ALL DIMENSIONS ARE IN  
MILLIMETERS.



3rd ANGLE PROJECTION



1031 Goodworth Drive, Apex, NC 27539, USA  
Tel: +1.919.772.0115 [www.ati-ia.com](http://www.ati-ia.com)  
Fax: +1.919.772.8259 ISO 9001 Registered Company

PROPERTY OF ATI INDUSTRIAL AUTOMATION, INC. NOT TO BE REPRODUCED IN ANY  
MANNER EXCEPT ON ORDER OR WITH PRIOR WRITTEN AUTHORIZATION OF ATI.

DRAWN BY: D. SAMPLER 8/4/2021

CHECKED BY: J. WEAVER, 8/6/21

PROJECT # 180829-3

SHEET 3 OF 3

TITLE

QC-835 TOOL CHANGER DRAWING

SCALE  
1:2

SIZE  
B

DRAWING NUMBER  
9630-20-835

REVISION  
02