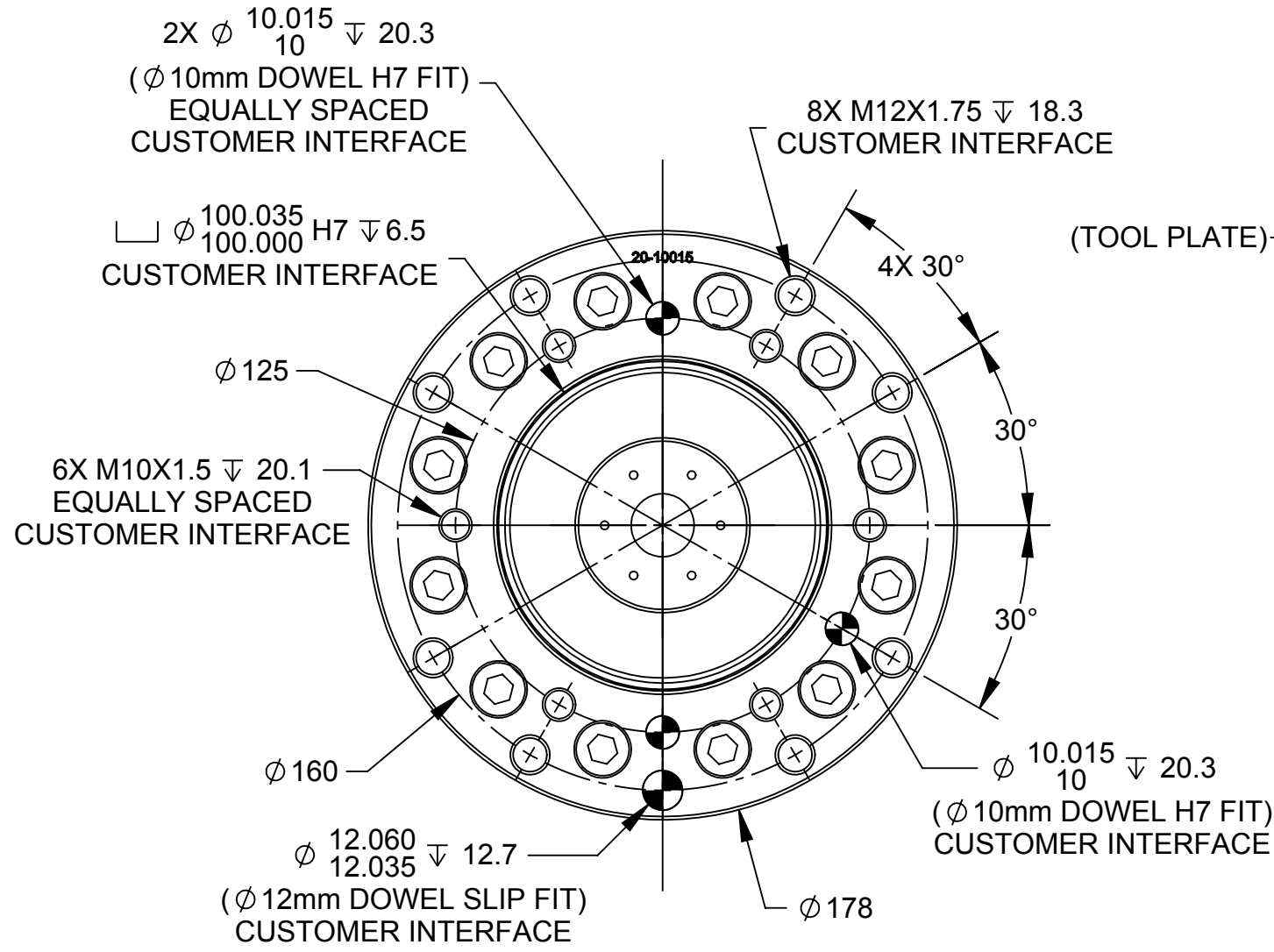
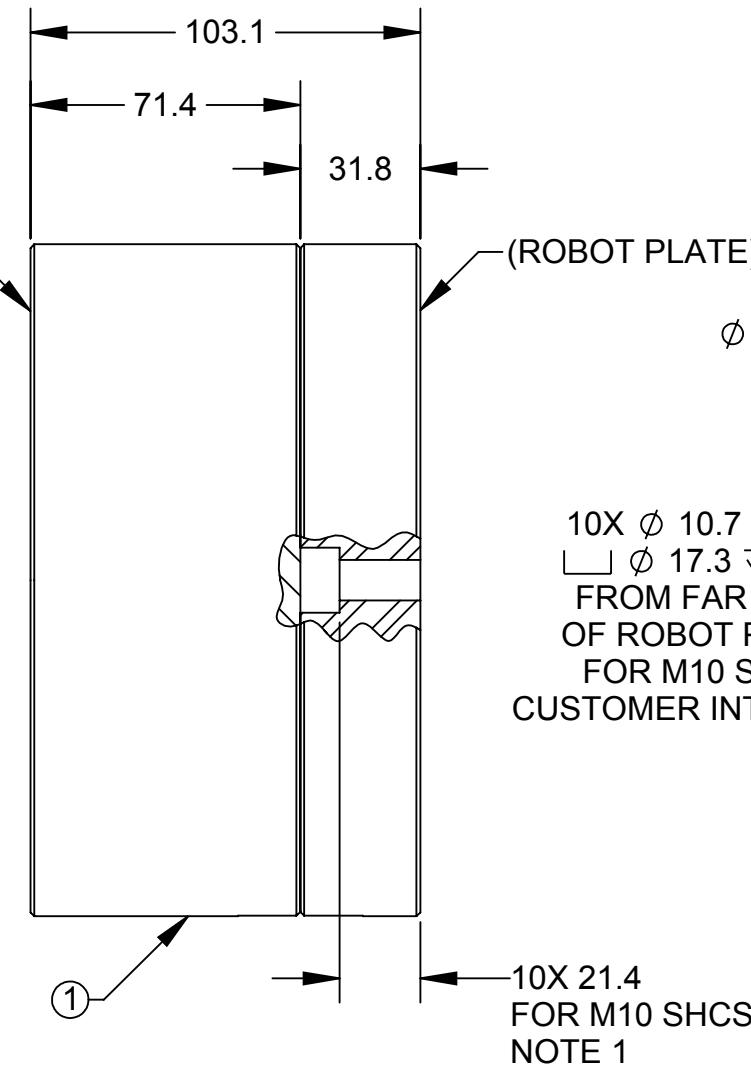


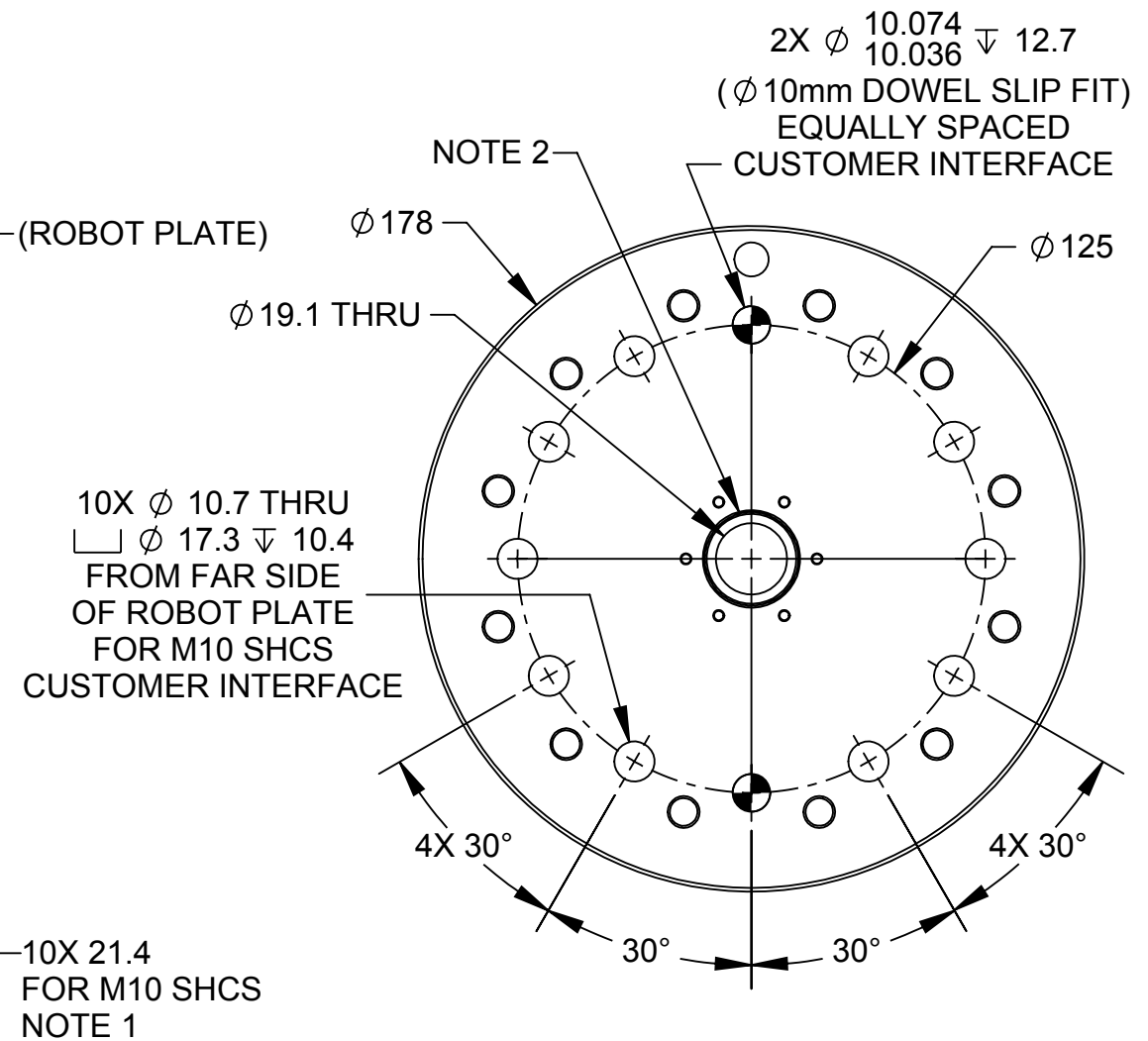
Rev.	Description	Initiator	Date
02	Eco 14989; dia. 10.074/10.036 was 10.061/10.036	LJH	11/10/2016



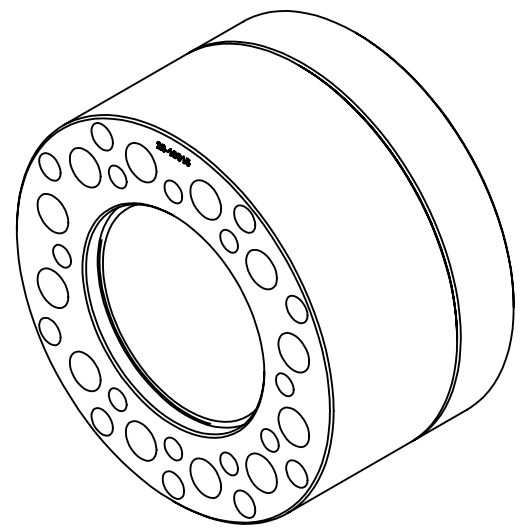
TOOL INTERFACE



SIDE VIEW, ASSEMBLED



ROBOT INTERFACE



- NOTES:
1. ROBOT AND TOOL MOUNTING FASTENERS NOT INCLUDED. OPTIONAL ROBOT FASTENER KITS AVAILABLE.
 2. OPTIONAL MASTER SIDE MOUNTING BOSSES AVAILABLE.

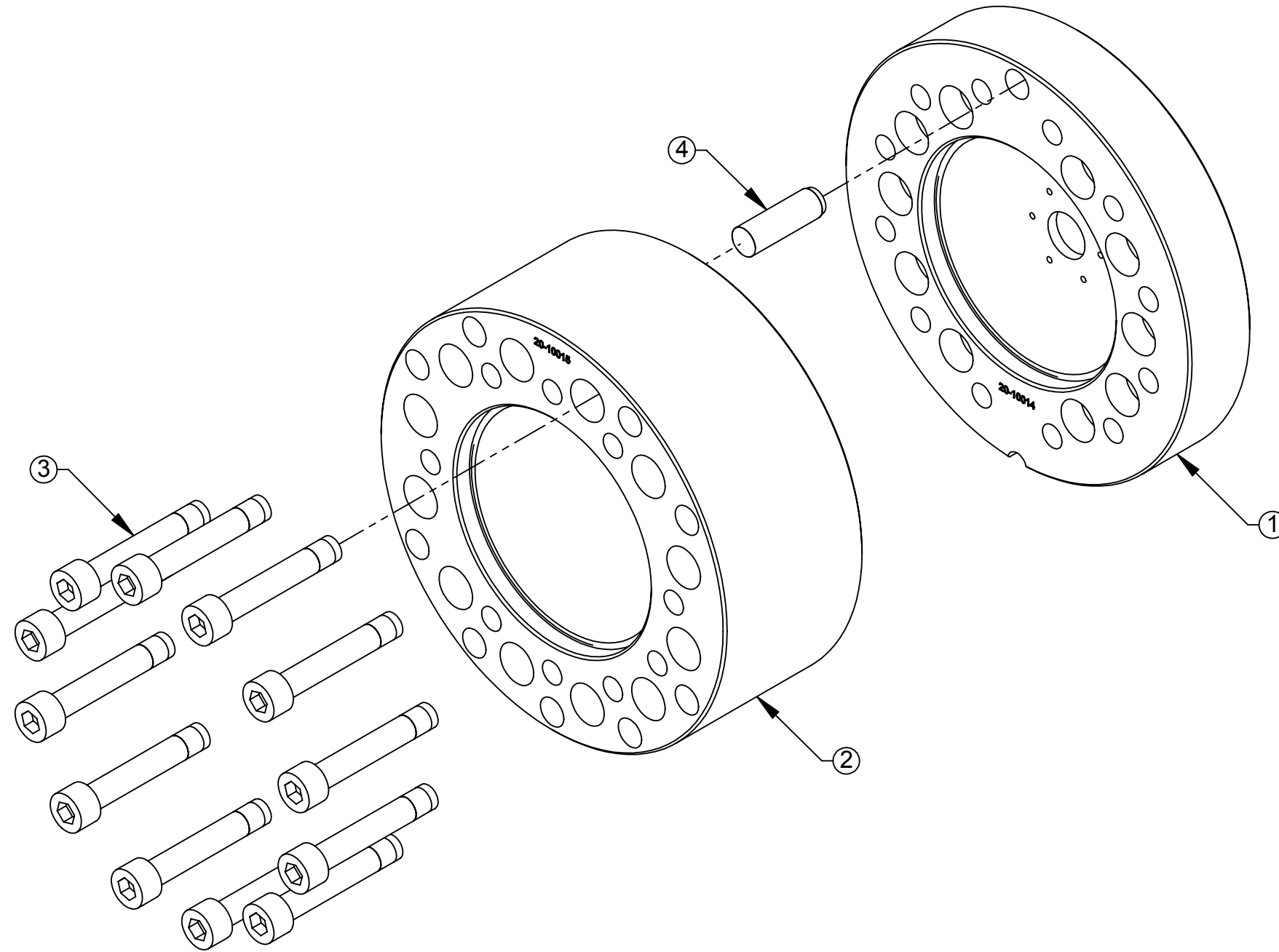
ITEM NO.	QTY	PART NUMBER	DESCRIPTION
1	1	9121-210-A-10014	QC-210 Spacer, Two Piece Bolted Type, No Boss

NOTES: UNLESS OTHERWISE SPECIFIED. DO NOT SCALE DRAWING. ALL DIMENSIONS ARE IN MILLIMETERS.			1031 Goodworth Drive, Apex, NC 27539, USA Tel: +1.919.772.0115 Email: info@ati-ia.com Fax: +1.919.772.8259 www.ati-ia.com ISO 9001 Registered Company	
	DRAWN BY: B. Kendrick 8/25/16 CHECKED BY: K. Zachary 8/25/16		TITLE QC-210 Spacer Assembly, Two Piece Bolted Type	
		PROJECT # 160715-5 SHEET 1 OF 2	SCALE 1:2 SIZE B	DRAWING NUMBER 9630-20-210-A-10014 REVISION 02

PROPERTY OF ATI INDUSTRIAL AUTOMATION, INC. NOT TO BE REPRODUCED IN ANY MANNER EXCEPT ON ORDER OR WITH PRIOR WRITTEN AUTHORIZATION OF ATI.

Rev.	Description	Initiator	Date
-	See Sheet1	-	-

QC-210 SPACER, EXPLODED VIEW



NOTES: UNLESS OTHERWISE SPECIFIED.

DO NOT SCALE DRAWING. ALL DIMENSIONS ARE IN MILLIMETERS.



3rd ANGLE PROJECTION



1031 Goodworth Drive, Apex, NC 27539, USA
 Tel: +1.919.772.0115 Email: info@ati-ia.com
 Fax: +1.919.772.8259 www.ati-ia.com
 ISO 9001 Registered Company

PROPERTY OF ATI INDUSTRIAL AUTOMATION, INC. NOT TO BE REPRODUCED IN ANY MANNER EXCEPT ON ORDER OR WITH PRIOR WRITTEN AUTHORIZATION OF ATI.

DRAWN BY: B. Kendrick 8/25/16		TITLE	
CHECKED BY: K. Zachary 8/25/16		QC-210 Spacer Assembly, Two Piece Bolted Type	
PROJECT #	160715-5	SHEET	2 OF 2
SCALE	1:2	SIZE	B
DRAWING NUMBER	9630-20-210-A-10014		REVISION
			02