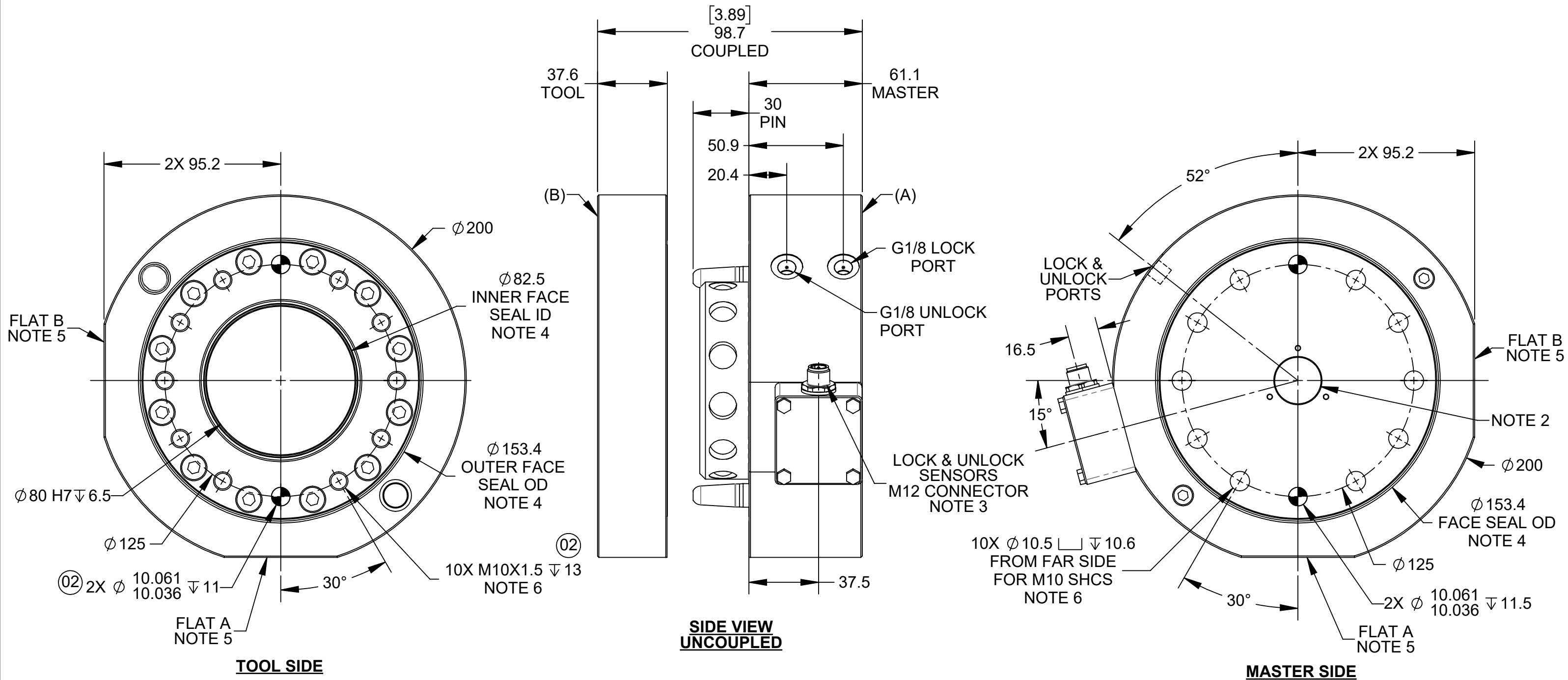


REV.	DESCRIPTION	INITIATOR	DATE
02	ECO 21423; SHEET 1 TOOL SIDE CHANGED DEPT 17 TO 11 AND DEPTH 17.5 TO 13	DS	6/20/2023



**PART NUMBERS:**

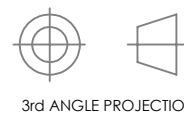
- (A) MASTER: 9120-161AM-000-000-SX (NOTE 1)
- (B) TOOL: 9120-161FT-000-000

**NOTES:**

- '-SX' IN MASTER PART NUMBER DENOTES SENSOR OPTIONS ARE AVAILABLE.
- OPTIONAL MASTER SIDE MOUNTING BOSSES AVAILABLE.
- M12, 4-PIN MALE CONNECTOR, IP69K (TURCK# EFSVG-A4.400.2-0.5). CONNECTOR ORIENTATION IS NOT GUARANTEED.
- FACE SEALS NOT SHOWN FOR CLARITY.
- COVER PLATES FOR UNPOPULATED MODULE FLATS ARE AVAILABLE.
- QC MAX STATIC MOMENT X & Y RATING = 1360 Nm, ASSUMING ALL 10 SHCS FASTENERS ARE USED. QC STATIC MOMENT X & Y RATING = 680 Nm, IF 6 FASTENERS ARE USED ON MASTER OR TOOL.

NOTES: UNLESS OTHERWISE SPECIFIED.

DO NOT SCALE DRAWING. ALL DIMENSIONS ARE IN MILLIMETERS.

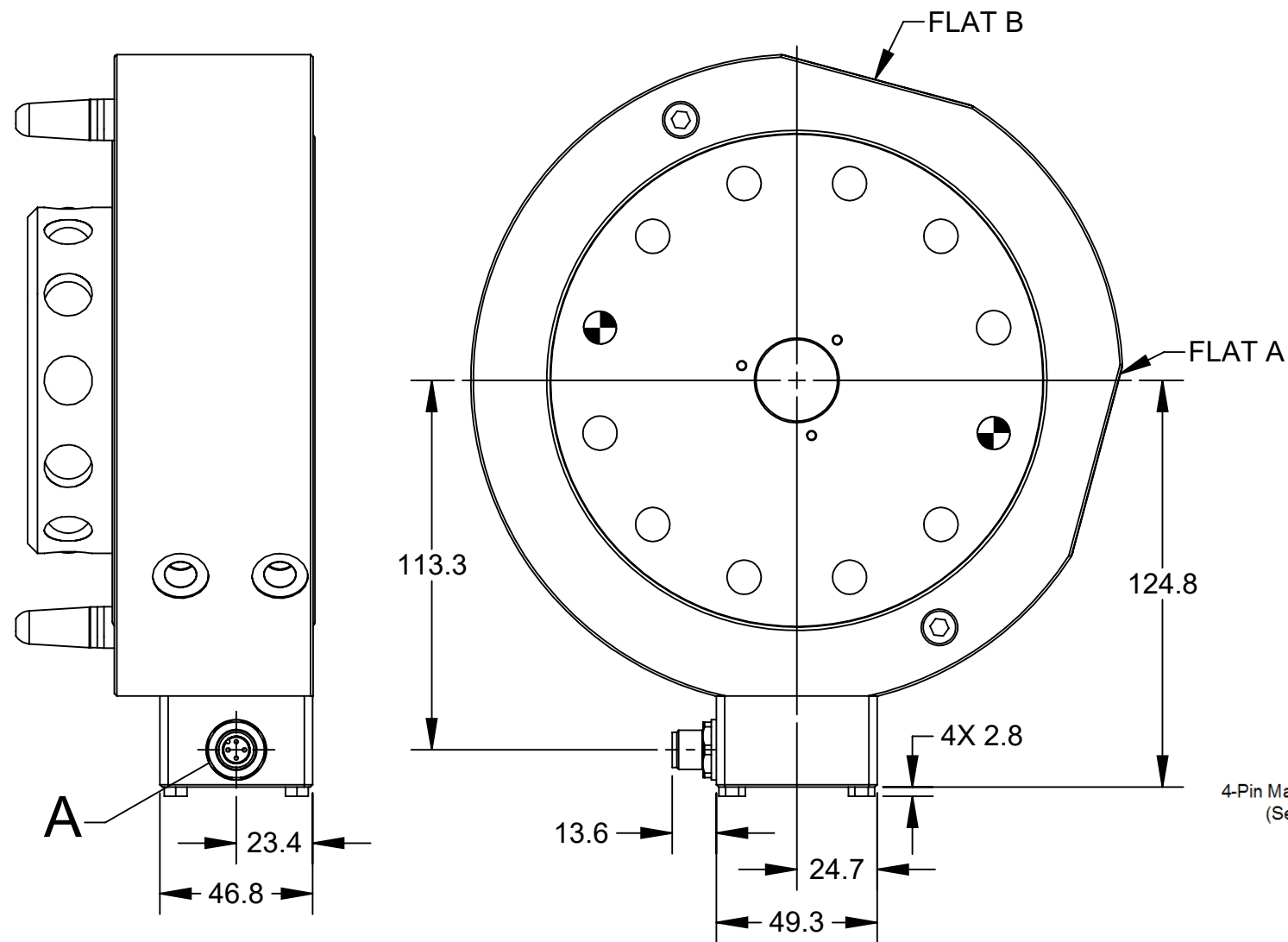


1031 Goodworth Drive, Apex, NC 27539, USA  
 Tel: +1.919.772.0115 www.ati-ia.com  
 Fax: +1.919.772.8259 ISO 9001 Registered Company

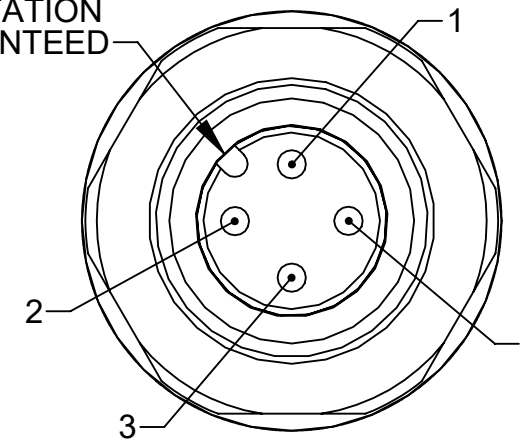
PROPERTY OF ATI INDUSTRIAL AUTOMATION, INC. NOT TO BE REPRODUCED IN ANY MANNER EXCEPT ON ORDER OR WITH PRIOR WRITTEN AUTHORIZATION OF ATI.

DRAWN BY: M. GALA 10/10/22		TITLE	
CHECKED BY: J. WEAVER 10/20/22		QC-161 TOOL CHANGER DRAWING	
SCALE	SIZE	DRAWING NUMBER	REVISION
1:2	B	9630-20-161	02
PROJECT # 211028-4 SHEET 1 OF 4			

# QC-161 MASTER LOCK/UNLOCK WIRING DIAGRAM

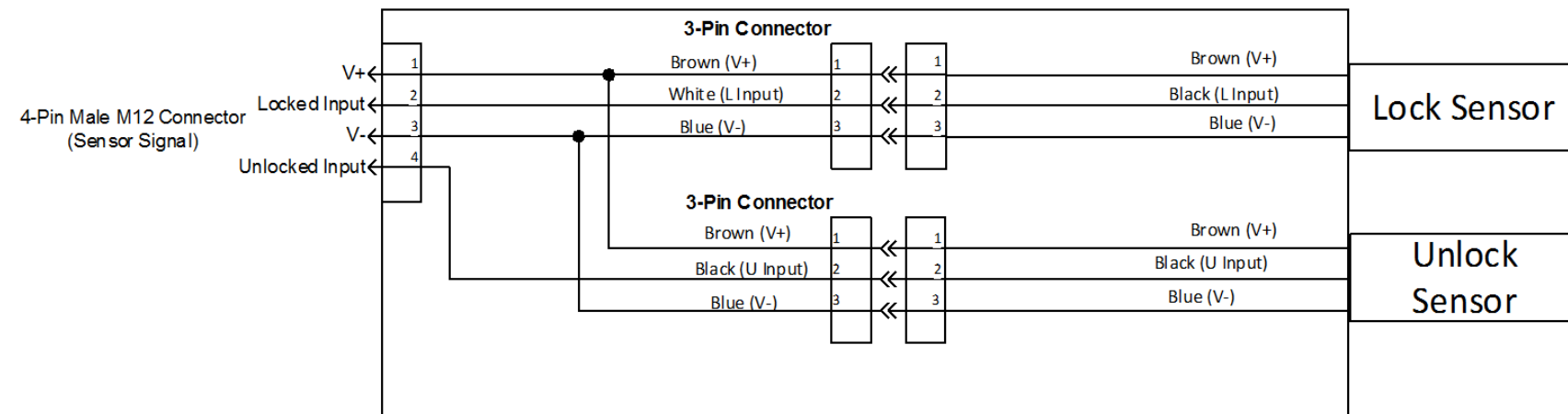


KEY ORIENTATION  
NOT GUARANTEED



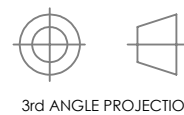
DETAIL A  
4-PIN MALE M12 CONNECTOR  
NOTE 3, SHEET 1  
SCALE 3 : 1

## M12 HARNESS WIRING DIAGRAM



NOTES: UNLESS OTHERWISE SPECIFIED.

DO NOT SCALE DRAWING.  
ALL DIMENSIONS ARE IN  
MILLIMETERS.



1031 Goodworth Drive, Apex, NC 27539, USA  
Tel: +1.919.772.0115 www.ati-ia.com  
Fax: +1.919.772.8259 ISO 9001 Registered Company

PROPERTY OF ATI INDUSTRIAL AUTOMATION, INC. NOT TO BE REPRODUCED IN ANY MANNER EXCEPT ON ORDER OR WITH PRIOR WRITTEN AUTHORIZATION OF ATI.

DRAWN BY: M. GALA 10/10/22

CHECKED BY: J. WEAVER 10/20/22

TITLE

QC-161 TOOL CHANGER DRAWING

PROJECT # 211028-4 SHEET 2 OF 4

SCALE  
1:2

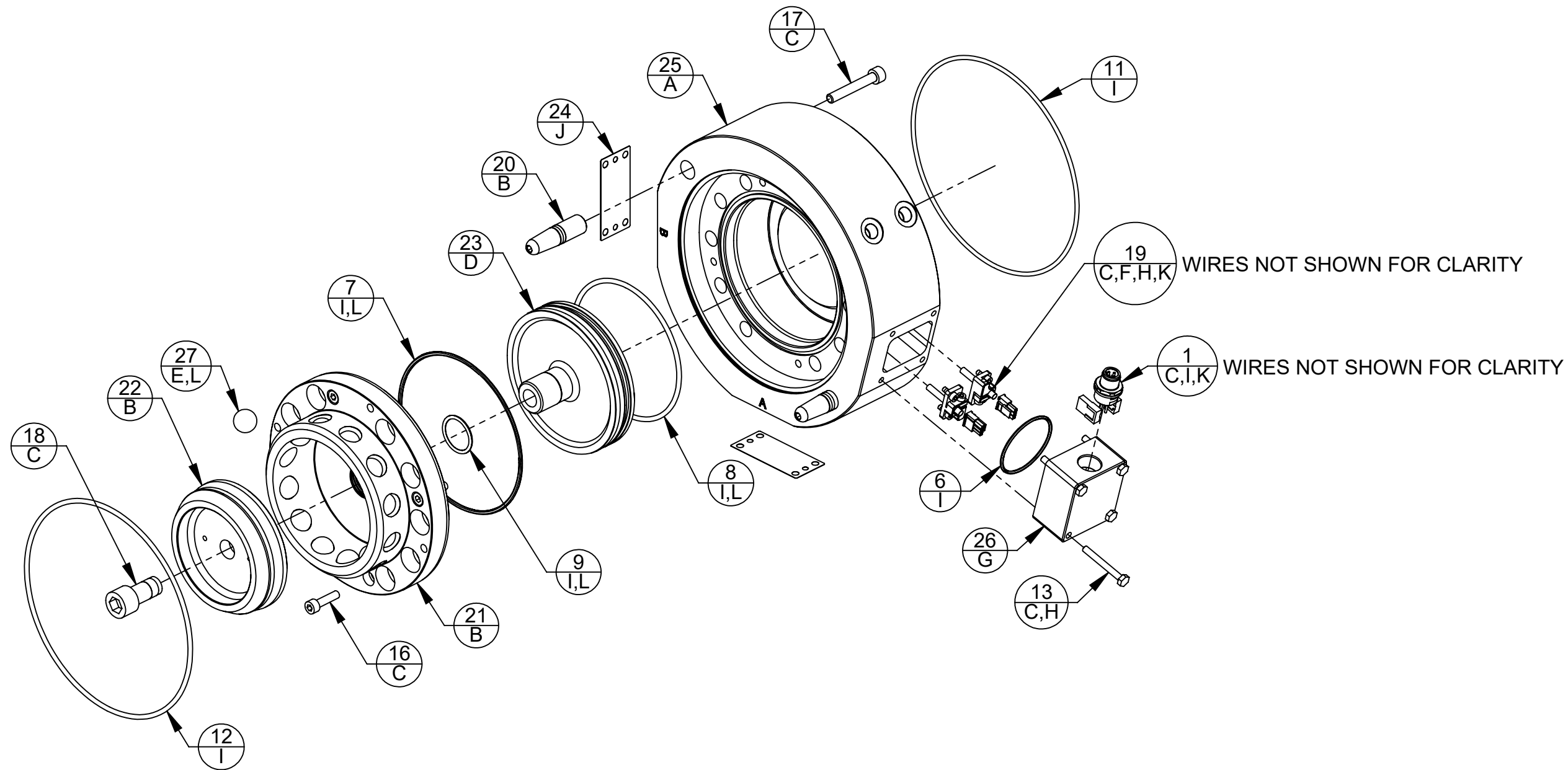
SIZE  
B

DRAWING NUMBER  
9630-20-161

REVISION  
02

# QC-161 MASTER ASSEMBLY

9120-161AM-000-000-SX



ITEM #	MATERIAL
--------	----------

**MATERIAL LIST:**

- A. 304 STAINLESS STEEL
- B. HARDENED STAINLESS STEEL WITH CORROSION RESISTANT PLATING
- C. 18-8 STAINLESS STEEL
- D. ALLOY STEEL WITH CORROSION RESISTANT PLATING
- E. TUNGSTEN CARBIDE
- F. ANODIZED ALUMINUM
- G. BLACK DELRIN
- H. VITON
- I. BUNA-N
- J. HIGH PURITY SILICONE RUBBER, FDA LISTED MATERIAL
- K. NYLON
- L. JET-LUBE FMG (FOOD MACHINE GREASE)

NOTES: UNLESS OTHERWISE SPECIFIED.

DO NOT SCALE DRAWING. ALL DIMENSIONS ARE IN MILLIMETERS.



3rd ANGLE PROJECTION



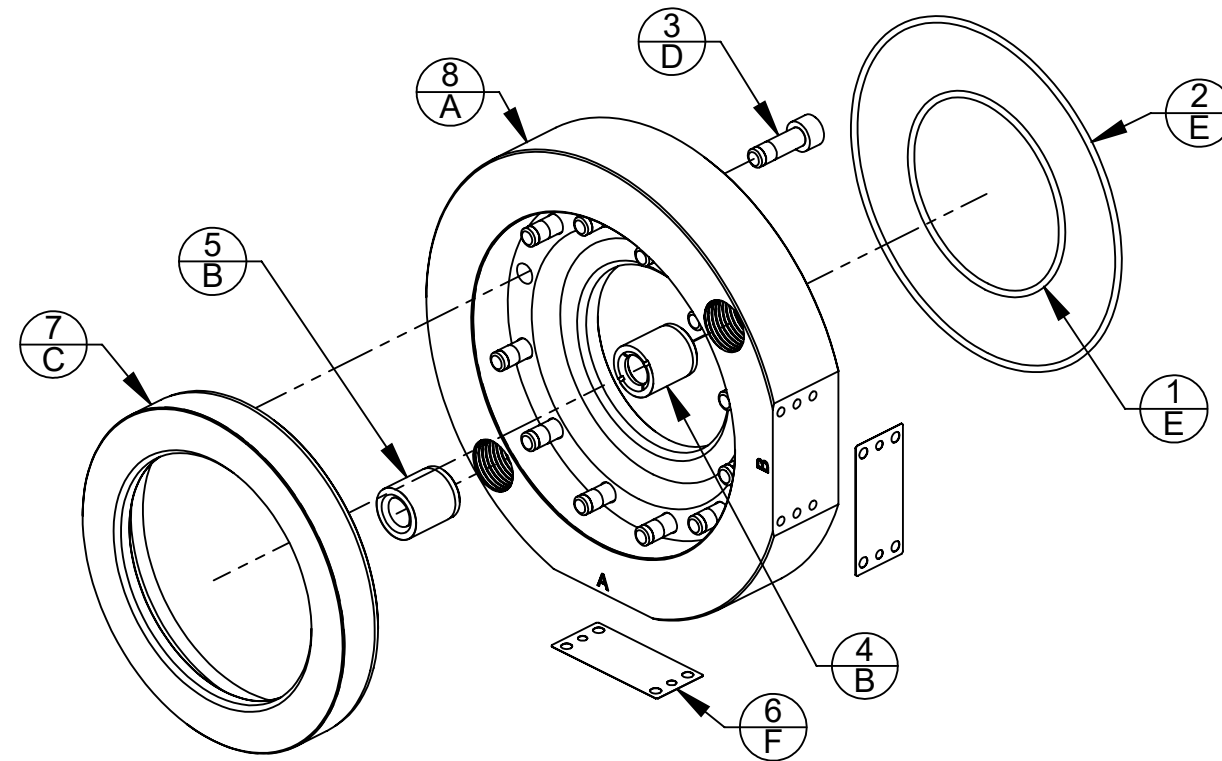
1031 Goodworth Drive, Apex, NC 27539, USA  
 Tel: +1.919.772.0115 www.ati-ia.com  
 Fax: +1.919.772.8259 ISO 9001 Registered Company

PROPERTY OF ATI INDUSTRIAL AUTOMATION, INC. NOT TO BE REPRODUCED IN ANY MANNER EXCEPT ON ORDER OR WITH PRIOR WRITTEN AUTHORIZATION OF ATI.

DRAWN BY: M. GALA 10/10/22		TITLE	
CHECKED BY: J. WEAVER 10/20/22		QC-161 TOOL CHANGER DRAWING	
PROJECT # 211028-4	SHEET 3 OF 4	SCALE 1:3	SIZE B
DRAWING NUMBER 9630-20-161		REVISION 02	

# QC-161 TOOL ASSEMBLY

9120-161FT-000-000



ITEM #  
MATERIAL

- MATERIAL LIST:
- A. 304 STAINLESS STEEL
  - B. HARDENED STAINLESS STEEL WITH CORROSION RESISTANT PLATING
  - C. PRECIPITATION HARDENED STAINLESS STEEL
  - D. 316 STAINLESS STEEL, BUMAX 109
  - E. BUNA-N
  - F. HIGH PURITY SILICONE RUBBER, FDA LISTED MATERIAL

NOTES: UNLESS OTHERWISE SPECIFIED.

DO NOT SCALE DRAWING. ALL DIMENSIONS ARE IN MILLIMETERS.



3rd ANGLE PROJECTION



1031 Goodworth Drive, Apex, NC 27539, USA  
 Tel: +1.919.772.0115 www.ati-ia.com  
 Fax: +1.919.772.8259 ISO 9001 Registered Company

PROPERTY OF ATI INDUSTRIAL AUTOMATION, INC. NOT TO BE REPRODUCED IN ANY MANNER EXCEPT ON ORDER OR WITH PRIOR WRITTEN AUTHORIZATION OF ATI.

DRAWN BY: M. GALA 10/10/22		TITLE		
CHECKED BY: J. WEAVER 10/20/22		QC-161 TOOL CHANGER DRAWING		
PROJECT # 211028-4	SHEET 4 OF 4	SCALE	SIZE	DRAWING NUMBER
		1:3	B	9630-20-161
				REVISION
				02