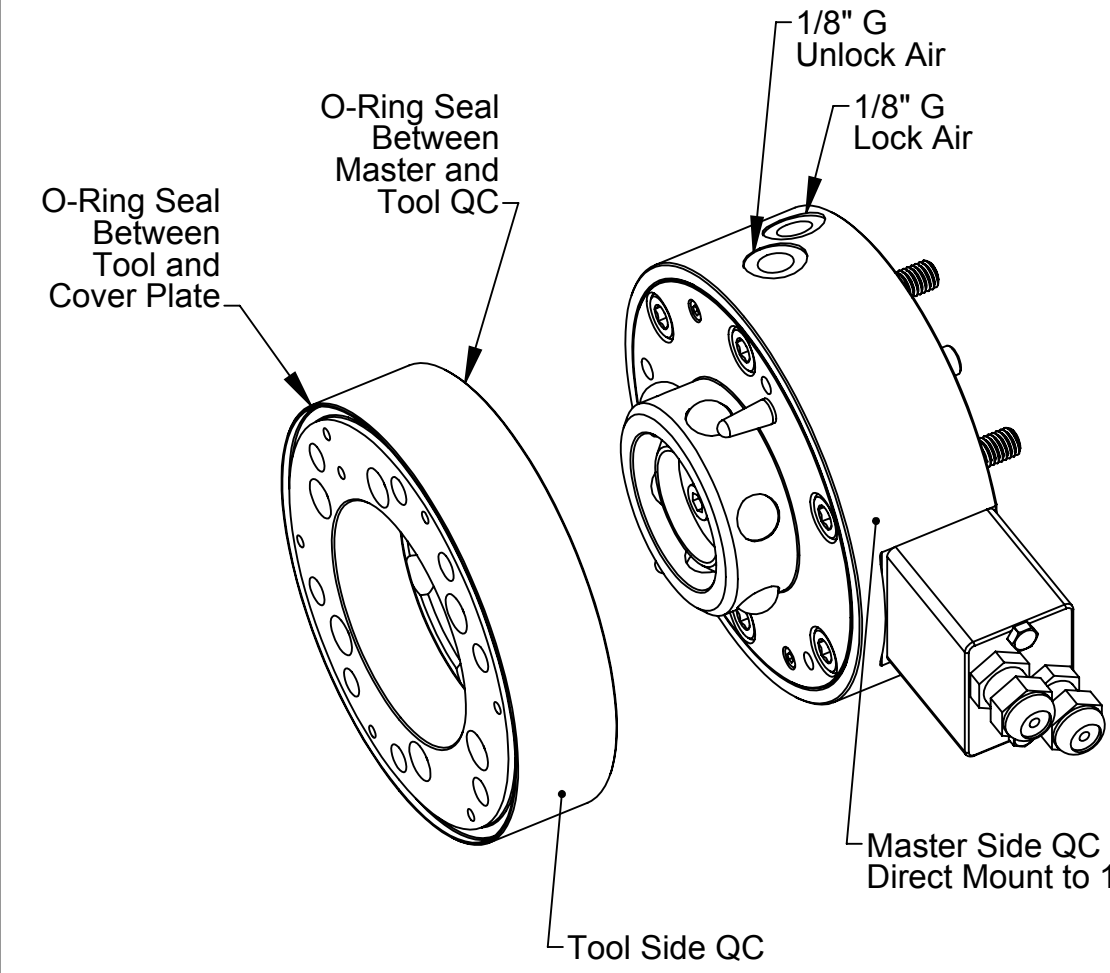
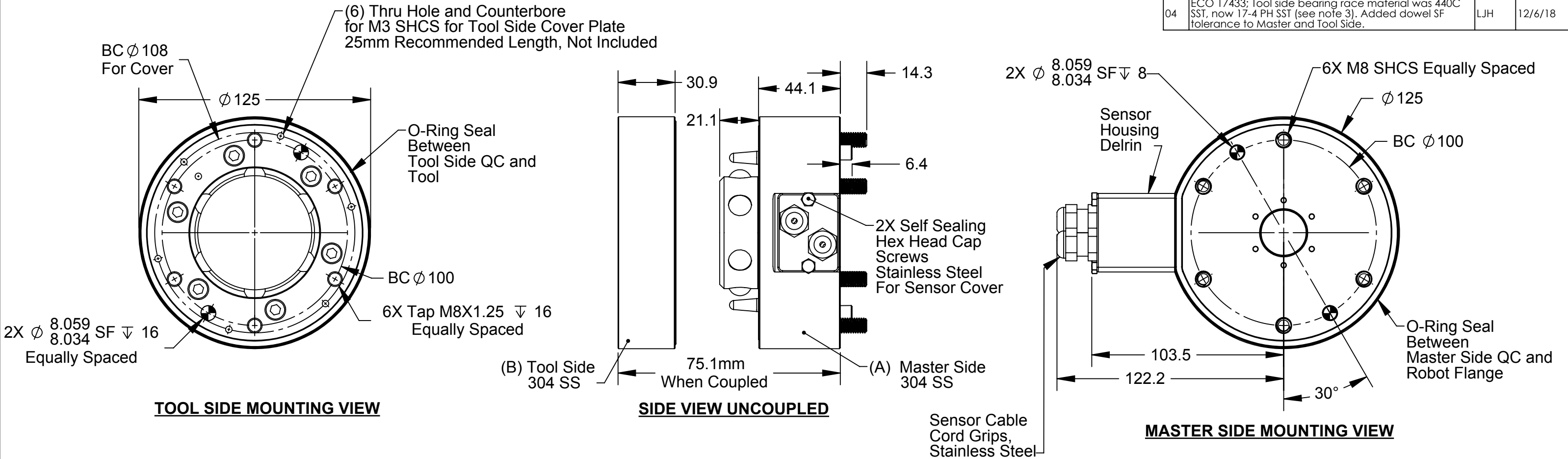


Rev.	Description	Initiator	Date
04	ECO 17433; Tool side bearing race material was 440C SST, now 17-4 PH SST (see note 3). Added dowel SF tolerance to Master and Tool Side.	LJH	12/6/18



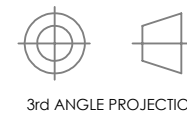
Part Numbers:  
A: 9120-077MNP-TDC-SS-SD-E  
B: 9120-077TNP-TDC-SS

Notes:

1. Locking mechanism components are 440C Stainless Steel
2. Alignment Pins are 440C Stainless Steel.
3. Tool side bearing race is 17-4 PH Stainless Steel.
4. Unit uses Food Grade Grease.
5. Lock & Unlock Air Connections, 1/8" G
6. Unit Features Lock and Unlock integrated Sensing, sensor cables exit through Stainless Steel Cord grips.
7. Unit utilizes Stainless Steel Fasteners.
8. Unit features o-ring seals between coupling and mounting surfaces, O-ring 3410-0001323-01 used for seal.
9. Optional Master Side Mounting Bosses available.

NOTES: UNLESS OTHERWISE SPECIFIED.

DO NOT SCALE DRAWING. ALL DIMENSIONS ARE IN MILLIMETERS.

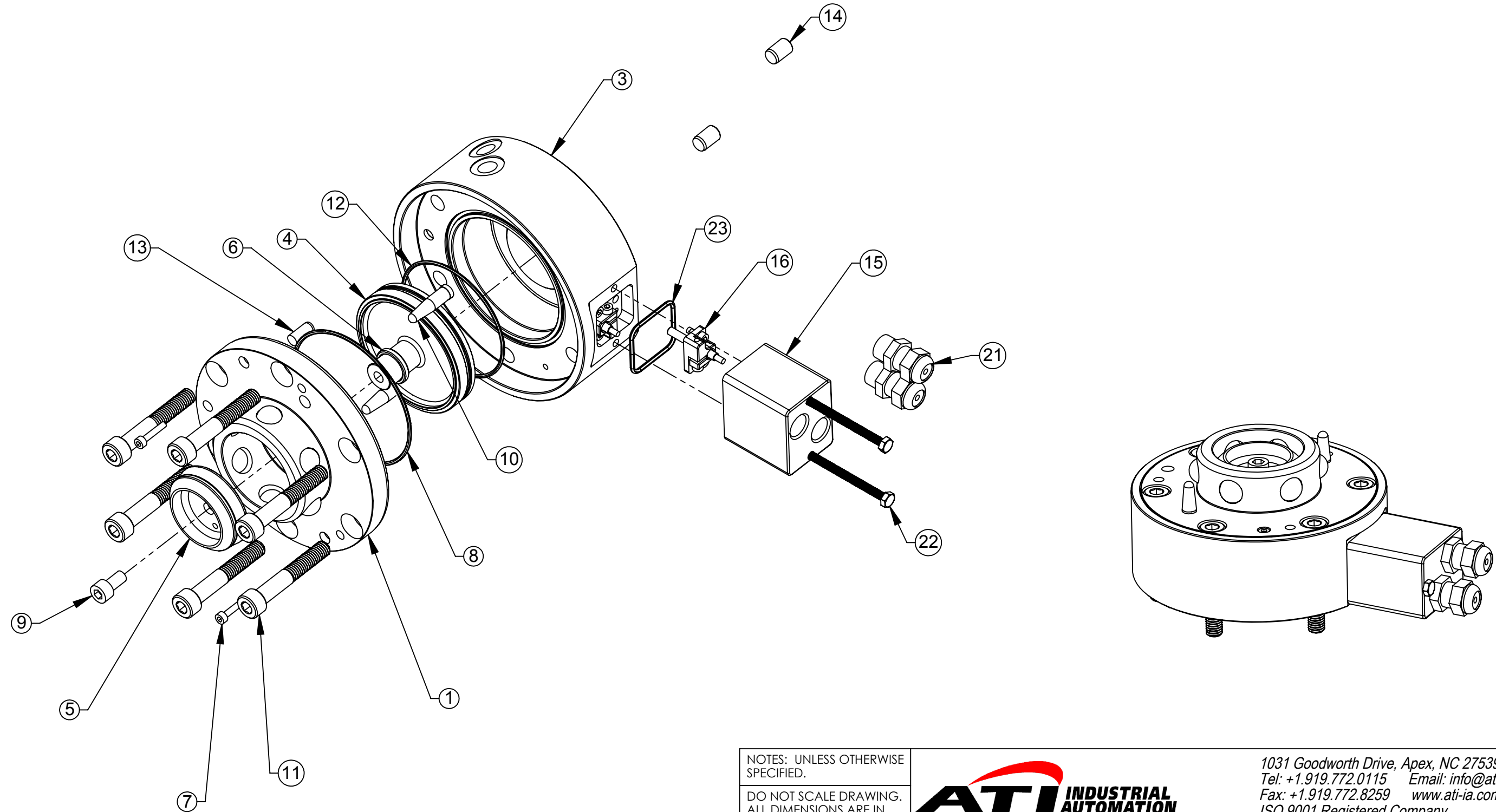


1031 Goodworth Drive, Apex, NC 27539, USA  
Tel: +1.919.772.0115 Email: info@ati-ia.com  
Fax: +1.919.772.8259 www.ati-ia.com  
ISO 9001 Registered Company

PROPERTY OF ATI INDUSTRIAL AUTOMATION, INC. NOT TO BE REPRODUCED IN ANY MANNER EXCEPT ON ORDER OR WITH PRIOR WRITTEN AUTHORIZATION OF ATI.

DRAWN BY: Dan Norton 8/10/10		TITLE	
CHECKED BY: KRZ 10/11/10		SS QC, Lock and Unlock Sensing, with Cover	
PROJECT #	100712-1	SHEET	1 OF 3
SCALE	1:2	SIZE	B
DRAWING NUMBER	9630-20-077	REVISION	04

**QC-77 Master Assembly**



NOTES: UNLESS OTHERWISE SPECIFIED.

DO NOT SCALE DRAWING. ALL DIMENSIONS ARE IN MILLIMETERS.



3rd ANGLE PROJECTION

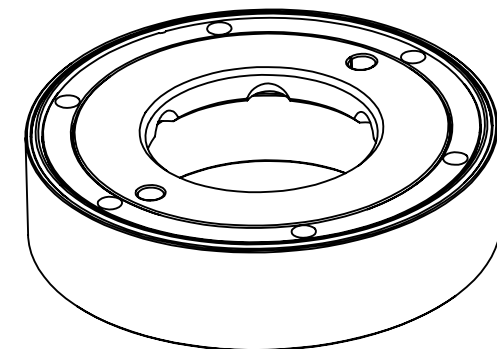
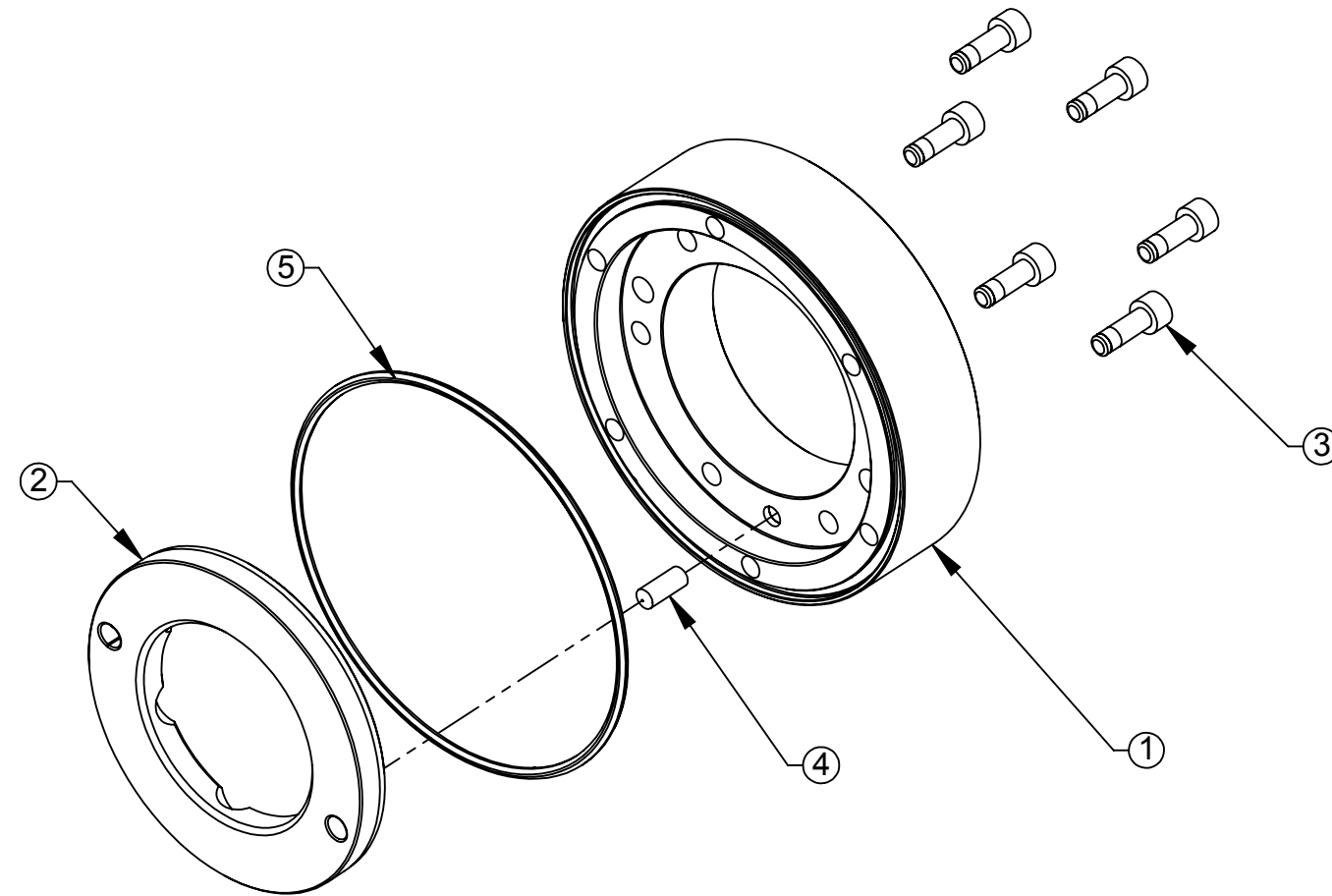


1031 Goodworth Drive, Apex, NC 27539, USA  
 Tel: +1.919.772.0115 Email: info@ati-ia.com  
 Fax: +1.919.772.8259 www.ati-ia.com  
 ISO 9001 Registered Company

PROPERTY OF ATI INDUSTRIAL AUTOMATION, INC. NOT TO BE REPRODUCED IN ANY MANNER EXCEPT ON ORDER OR WITH PRIOR WRITTEN AUTHORIZATION OF ATI.

DRAWN BY: Dan Norton 8/10/10		TITLE		
CHECKED BY: KRZ 10/11/10		SS QC, Lock and Unlock Sensing, with Cover		
PROJECT #	100712-1	SHEET	2	OF 3
SCALE	1:2	SIZE	B	DRAWING NUMBER
				9630-20-077
				REVISION
				04

**QC-77 Tool Assembly**



NOTES: UNLESS OTHERWISE SPECIFIED.

DO NOT SCALE DRAWING. ALL DIMENSIONS ARE IN MILLIMETERS.



3rd ANGLE PROJECTION



1031 Goodworth Drive, Apex, NC 27539, USA  
 Tel: +1.919.772.0115 Email: info@ati-ia.com  
 Fax: +1.919.772.8259 www.ati-ia.com  
 ISO 9001 Registered Company

PROPERTY OF ATI INDUSTRIAL AUTOMATION, INC. NOT TO BE REPRODUCED IN ANY MANNER EXCEPT ON ORDER OR WITH PRIOR WRITTEN AUTHORIZATION OF ATI.

DRAWN BY: Dan Norton 8/10/10		TITLE		
CHECKED BY: KRZ 10/11/10		SS QC, Lock and Unlock Sensing, with Cover		
PROJECT #	100712-1	SHEET	3	OF 3
SCALE	1:2	SIZE	B	DRAWING NUMBER
				9630-20-077
				REVISION
				04