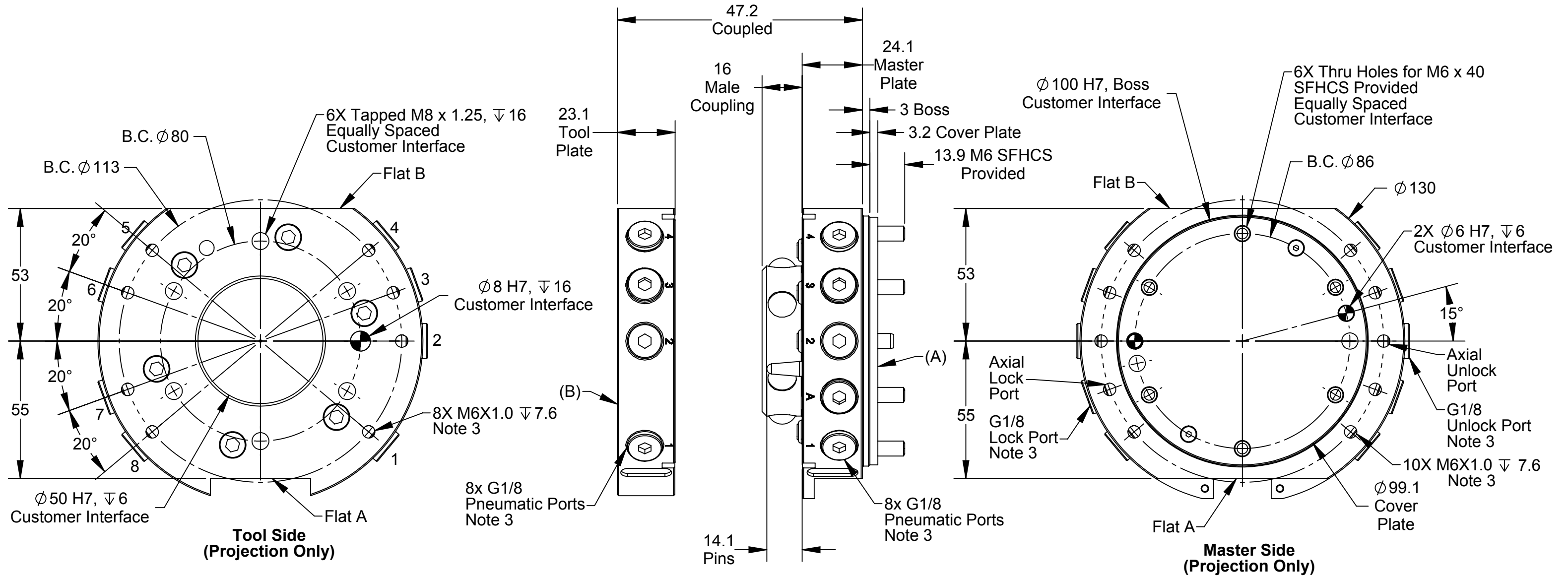


Rev.	Description	Initiator	Date
01	Initial Drawing	JMW	09/16/2014



**Warning:**

Do not apply lock/unlock air pressure without master cover plate properly attached. If cover plate is not used, master should be properly attached to interface. Failure to do so could result in damage to cover plate and o-ring.

**Notes:**

1. Master mounting hardware provided.
2. Orientation marks are provided to assist in robot teaching.
3. Customer to provide axial port plugs or face seals as required, radial plugs included.
4. Cover plate is not necessary if robot interface plate provides sealing. The recommended interface plate bore depth without a cover is 2.5mm, with a cover plate is 5.6mm.
5. Orientation marks are provided to assist in robot teaching.

**Part Numbers:**

- (A) Master: 9120-060MZW17-000-000-E  
 (B) Tool: 9120-060TZW17-000-000-E

NOTES: UNLESS OTHERWISE SPECIFIED.

DO NOT SCALE DRAWING. ALL DIMENSIONS ARE IN MILLIMETERS.



3rd ANGLE PROJECTION



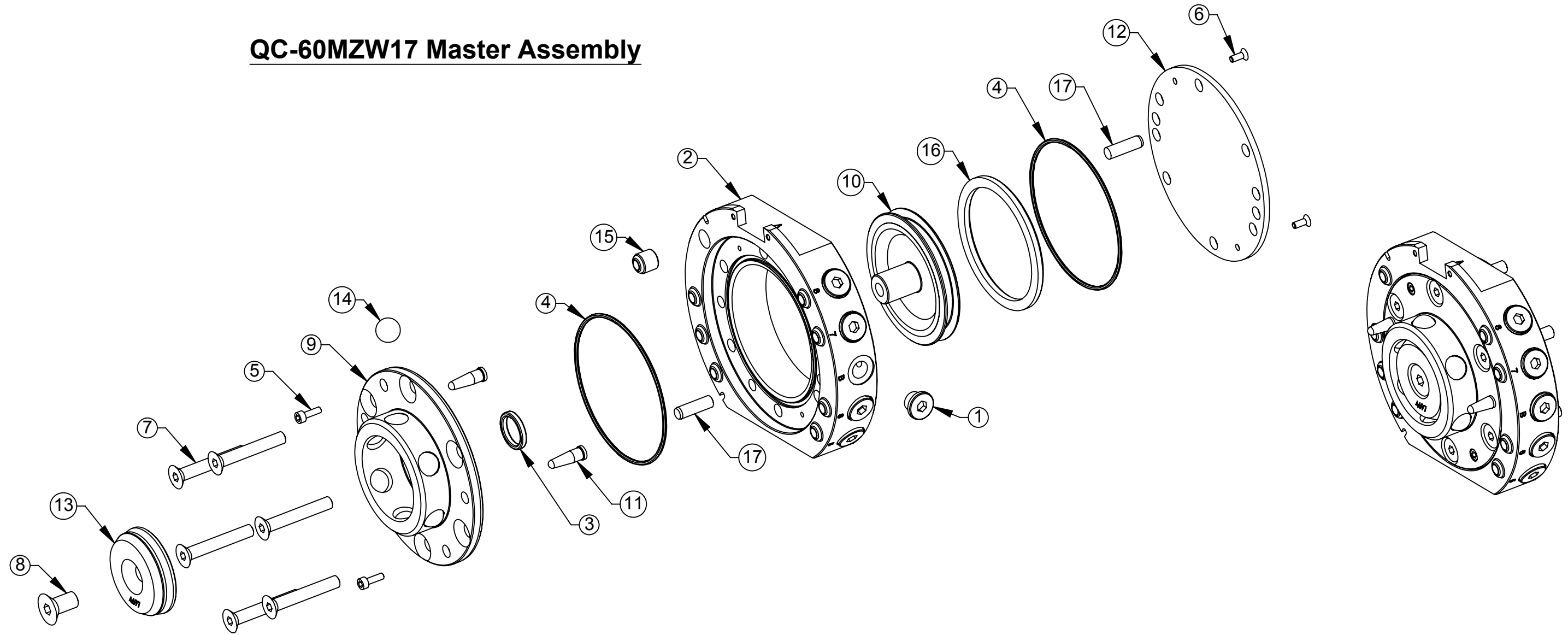
1031 Goodworth Drive, Apex, NC 27539, USA  
 Tel: +1.919.772.0115 Email: info@ati-ia.com  
 Fax: +1.919.772.8259 www.ati-ia.com  
 ISO 9001 Registered Company

PROPERTY OF ATI INDUSTRIAL AUTOMATION, INC. NOT TO BE REPRODUCED IN ANY MANNER EXCEPT ON ORDER OR WITH PRIOR WRITTEN AUTHORIZATION OF ATI.

DRAWN BY: J. Winterroth, 9/16/14		TITLE	
CHECKED BY: D. Norton, 9/16/14		QC-60 Tool Changer, Axial Ports, Euro	
PROJECT # 140709-2	SHEET 1 OF 3	SCALE 2:3	SIZE B
DRAWING NUMBER 9630-20-060MZW17 060TZW17		REVISION 01	

Rev.	Description	Initiator	Date
-	See Sheet1	-	-

## QC-60MZW17 Master Assembly



NOTES: UNLESS OTHERWISE SPECIFIED.

DO NOT SCALE DRAWING. ALL DIMENSIONS ARE IN MILLIMETERS.



3rd ANGLE PROJECTION



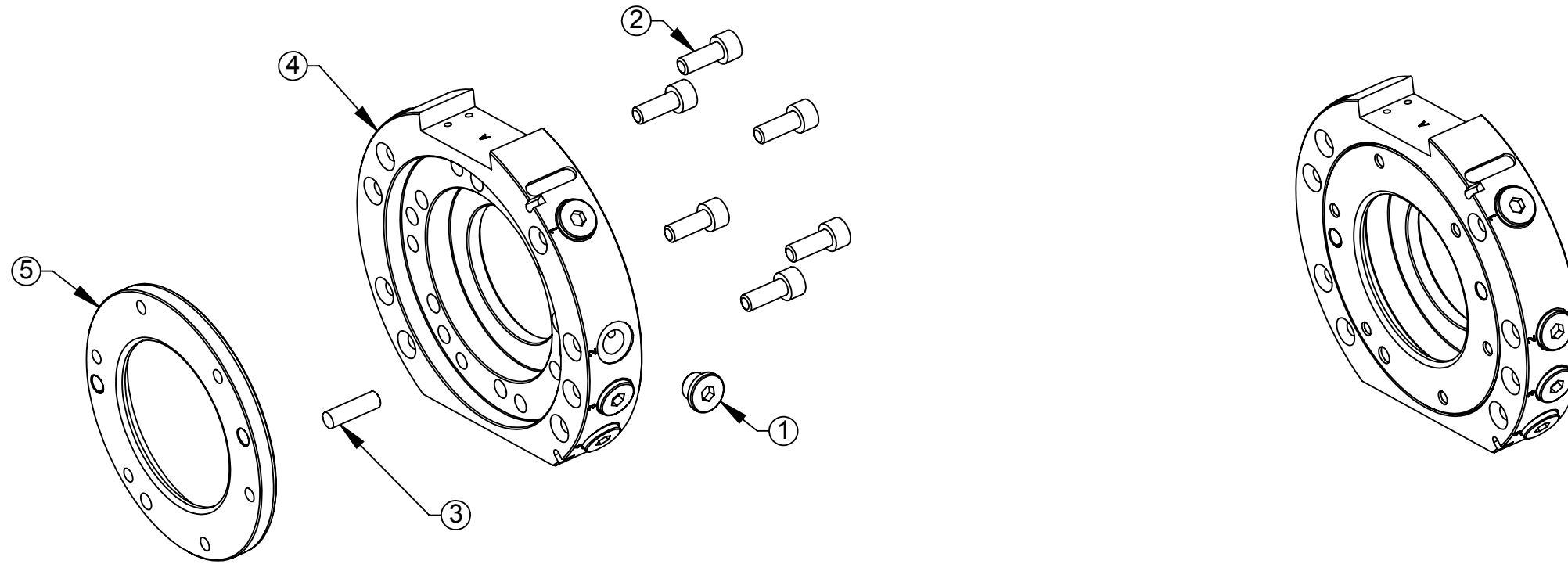
1031 Goodworth Drive, Apex, NC 27539, USA  
 Tel: +1.919.772.0115 Email: info@ati-ia.com  
 Fax: +1.919.772.8259 www.ati-ia.com  
 ISO 9001 Registered Company

PROPERTY OF ATI INDUSTRIAL AUTOMATION, INC. NOT TO BE REPRODUCED IN ANY MANNER EXCEPT ON ORDER OR WITH PRIOR WRITTEN AUTHORIZATION OF ATI.

DRAWN BY: J. Winterroth, 9/16/14		TITLE	
CHECKED BY: D. Norton, 9/16/14		QC-60 Tool Changer, Axial Ports, Euro	
PROJECT # 140709-2 SHEET 2 OF 3	SCALE 1:2	SIZE B	DRAWING NUMBER 9630-20-060MZW17 060TZW17
			REVISION 01

Rev.	Description	Initiator	Date
-	See Sheet1	-	-

## QC-60TZW17 Tool Assembly



NOTES: UNLESS OTHERWISE SPECIFIED.

DO NOT SCALE DRAWING. ALL DIMENSIONS ARE IN MILLIMETERS.



3rd ANGLE PROJECTION



1031 Goodworth Drive, Apex, NC 27539, USA  
 Tel: +1.919.772.0115 Email: info@ati-ia.com  
 Fax: +1.919.772.8259 www.ati-ia.com  
 ISO 9001 Registered Company

PROPERTY OF ATI INDUSTRIAL AUTOMATION, INC. NOT TO BE REPRODUCED IN ANY MANNER EXCEPT ON ORDER OR WITH PRIOR WRITTEN AUTHORIZATION OF ATI.

DRAWN BY: J. Winterroth, 9/16/14		TITLE		
CHECKED BY: D. Norton, 9/16/14		QC-60 Tool Changer, Axial Ports, Euro		
PROJECT #	140709-2	SHEET	3	OF 3
SCALE	1:2	SIZE	B	DRAWING NUMBER
9630-20-060MZW17 060TZW17				REVISION
				01