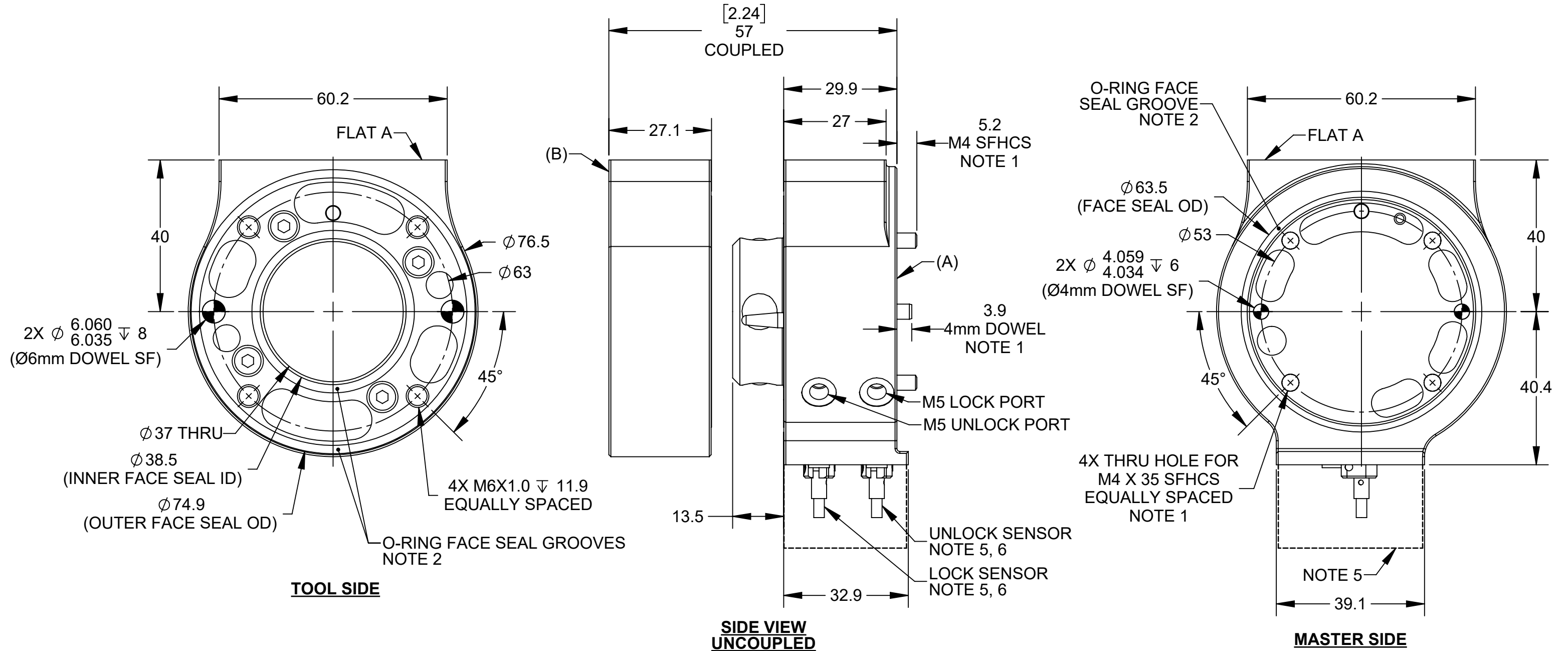


REV.	DESCRIPTION	INITIATOR	DATE
02	EC 21012. REMOVE SENSOR CONNECTION DETAILS FROM SHEET 1. SHOW THE TWO SENSOR OPTIONS' FORM FACTOR ON SHEET 2 AND THEIR SENSOR WIRING DIAGRAMS. MAKE SHEET 3 TO SHOW THE EXPLODED VIEW OF THE SENSOR CONFIGURATION WITH THE M12 CONNECTOR AND REORDER SHEETS. REMOVE PILOT HOLE INFORMATION FROM M6 THREAD CALLOUT.	MJG	10/11/2022

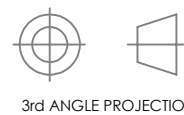


PART NUMBERS:
 (A) MASTER: 9120-024MZ1-000-SX (NOTE 4)
 (B) TOOL: 9120-024TZ1-000

- NOTES:
1. MASTER SIDE MOUNTING HARDWARE PROVIDED.
 2. FACE SEALS NOT SHOWN FOR CLARITY.
 3. SEE SHEETS 3, 4, AND 5 FOR MATERIALS OF CONSTRUCTION.
 4. 'SX' IN MASTER PART NUMBER DENOTES SENSOR OPTIONS ARE AVAILABLE.
 • SEE SHEET 2 FOR TYPES OF SENSOR CONNECTIONS AND THEIR WIRING DIAGRAMS
 5. SENSOR COVER AND CONNECTION METHOD NOT SHOWN FOR CLARITY.
 6. SENSOR CABLES NOT SHOWN FOR CLARITY.
 7. CONTACT ATI FOR FULL PART NUMBERS AND LIST OF OPTIONS.

NOTES: UNLESS OTHERWISE SPECIFIED.

DO NOT SCALE DRAWING. ALL DIMENSIONS ARE IN MILLIMETERS.



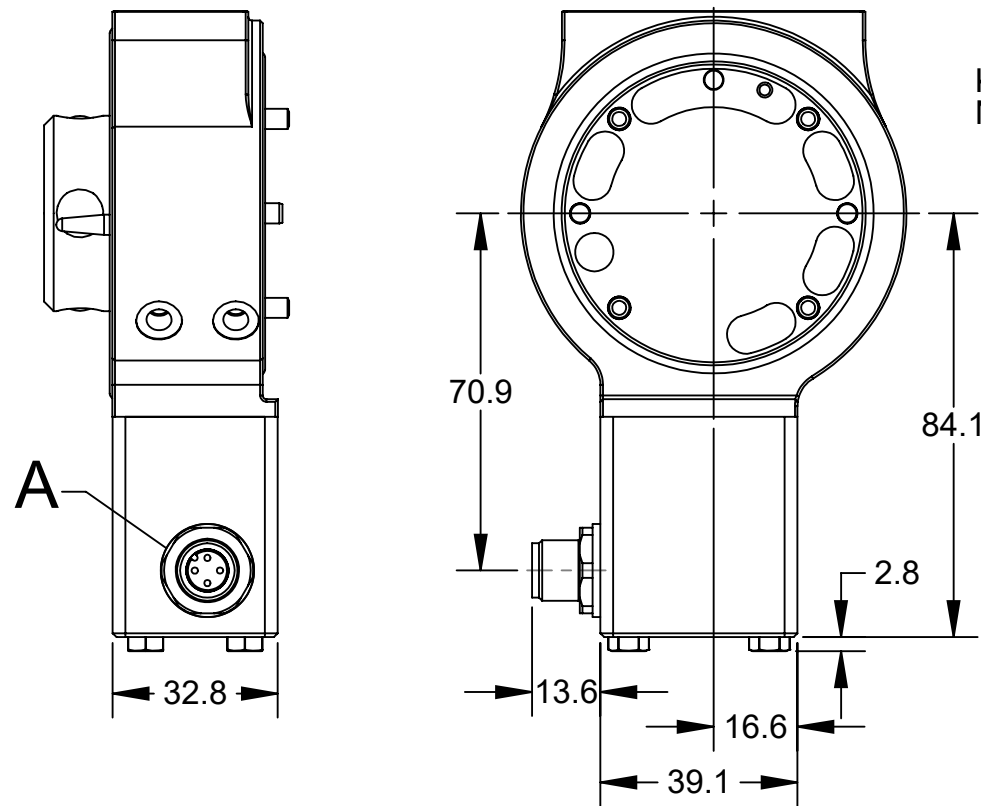
1031 Goodworth Drive, Apex, NC 27539, USA
 Tel: +1.919.772.0115 www.ati-ia.com
 Fax: +1.919.772.8259 ISO 9001 Registered Company

PROPERTY OF ATI INDUSTRIAL AUTOMATION, INC. NOT TO BE REPRODUCED IN ANY MANNER EXCEPT ON ORDER OR WITH PRIOR WRITTEN AUTHORIZATION OF ATI.

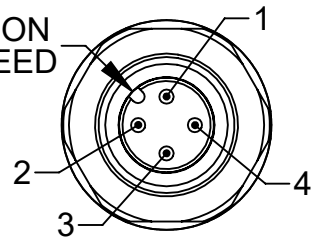
DRAWN BY: M. GALA 11/16/18		TITLE	
CHECKED BY: B. KENDRICK 11/19/18		QC-24Z1 TOOL CHANGER DRAWING	
PROJECT # 180419-5	SHEET 1 OF 5	SCALE 1:1	REVISION 02
SIZE B	DRAWING NUMBER 9630-20-024Z1		

QC-24Z1 MASTER LOCK/UNLOCK WIRING DIAGRAM

QC-24Z1 MASTER WITH M12 CONNECTOR

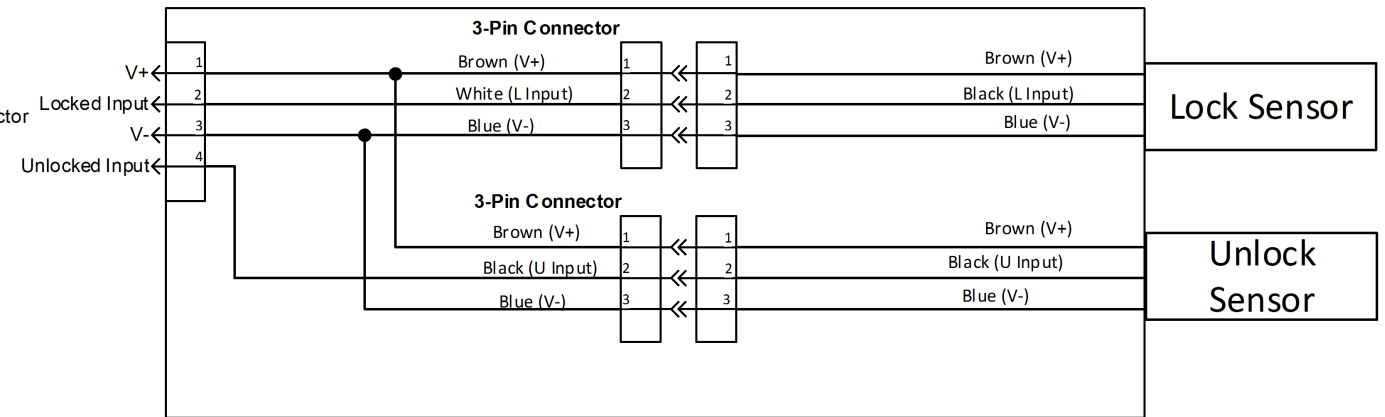


KEY ORIENTATION
NOT GUARANTEED

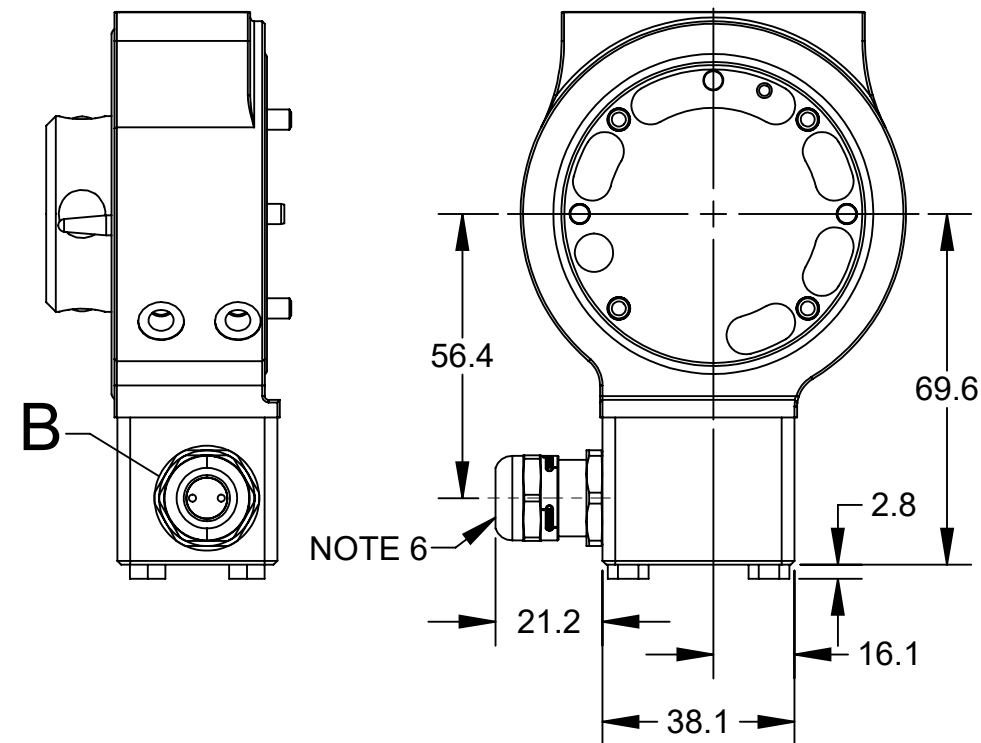


4-Pin Male M12 Connector
(Sensor Signal)

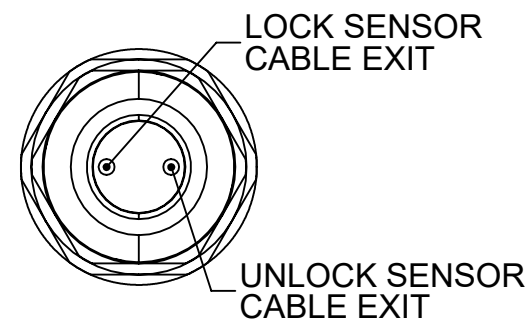
M12 HARNESS WIRING DIAGRAM



QC-24Z1 MASTER WITH 5m CABLES AND FLYING LEADS

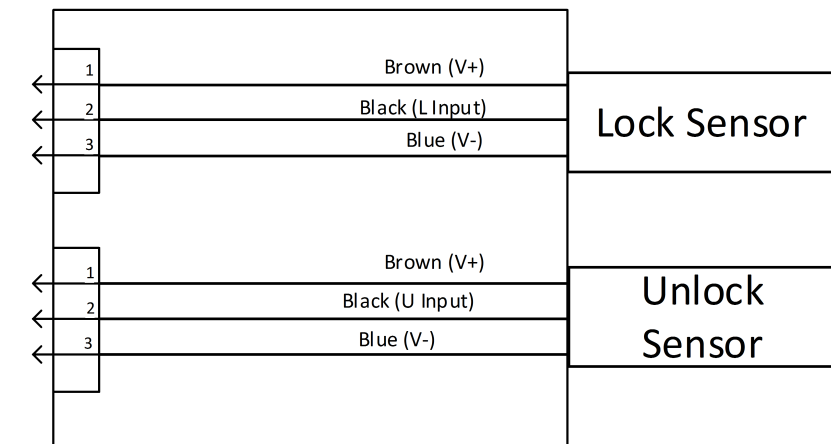


NOTE 6



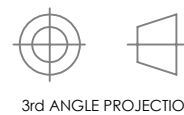
DETAIL B
CORDGRIP, 2 HOLE
SCALE 1.5 : 1

5m CABLES WIRING DIAGRAM



NOTES: UNLESS OTHERWISE SPECIFIED.

DO NOT SCALE DRAWING. ALL DIMENSIONS ARE IN MILLIMETERS.



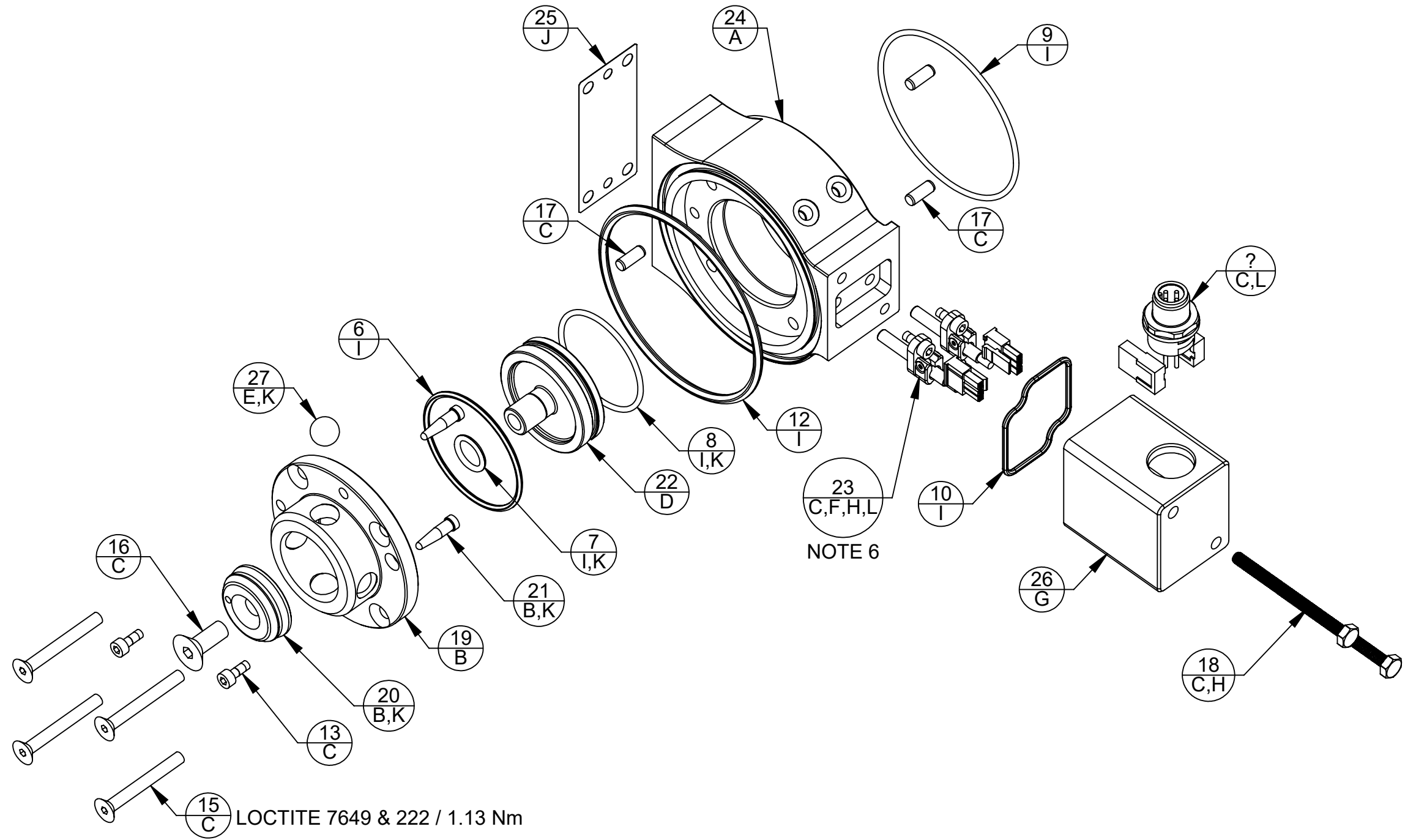
1031 Goodworth Drive, Apex, NC 27539, USA
Tel: +1.919.772.0115 www.ati-ia.com
Fax: +1.919.772.8259 ISO 9001 Registered Company

PROPERTY OF ATI INDUSTRIAL AUTOMATION, INC. NOT TO BE REPRODUCED IN ANY MANNER EXCEPT ON ORDER OR WITH PRIOR WRITTEN AUTHORIZATION OF ATI.

DRAWN BY: M. GALA 11/16/18		TITLE	
CHECKED BY: B. KENDRICK 11/19/18		QC-24Z1 TOOL CHANGER DRAWING	
PROJECT # 180419-5	SHEET 2 OF 5	SCALE 1:1.5	SIZE B
		DRAWING NUMBER 9630-20-024Z1	REVISION 02

QC-24Z1 MASTER

9120-024MZ1-000-SX WITH M12 CONNECTOR



ITEM #
MATERIAL

- MATERIAL LIST:**
 A. 304 STAINLESS STEEL
 B. HARDENED STAINLESS STEEL WITH CORROSION RESISTANT PLATING
 C. 18-8 STAINLESS STEEL
 D. ALLOY STEEL WITH CORROSION RESISTANT PLATING
 E. TUNGSTEN CARBIDE
 F. ANODIZED ALUMINUM
 G. BLACK DELRIN
 H. VITON
 I. BUNA-N
 J. HIGH PURITY SILICONE RUBBER, FDA LISTED MATERIAL
 K. JET-LUBE FMG (FOOD MACHINE GREASE)
 L. NYLON

NOTES: UNLESS OTHERWISE SPECIFIED.

DO NOT SCALE DRAWING. ALL DIMENSIONS ARE IN MILLIMETERS.



3rd ANGLE PROJECTION

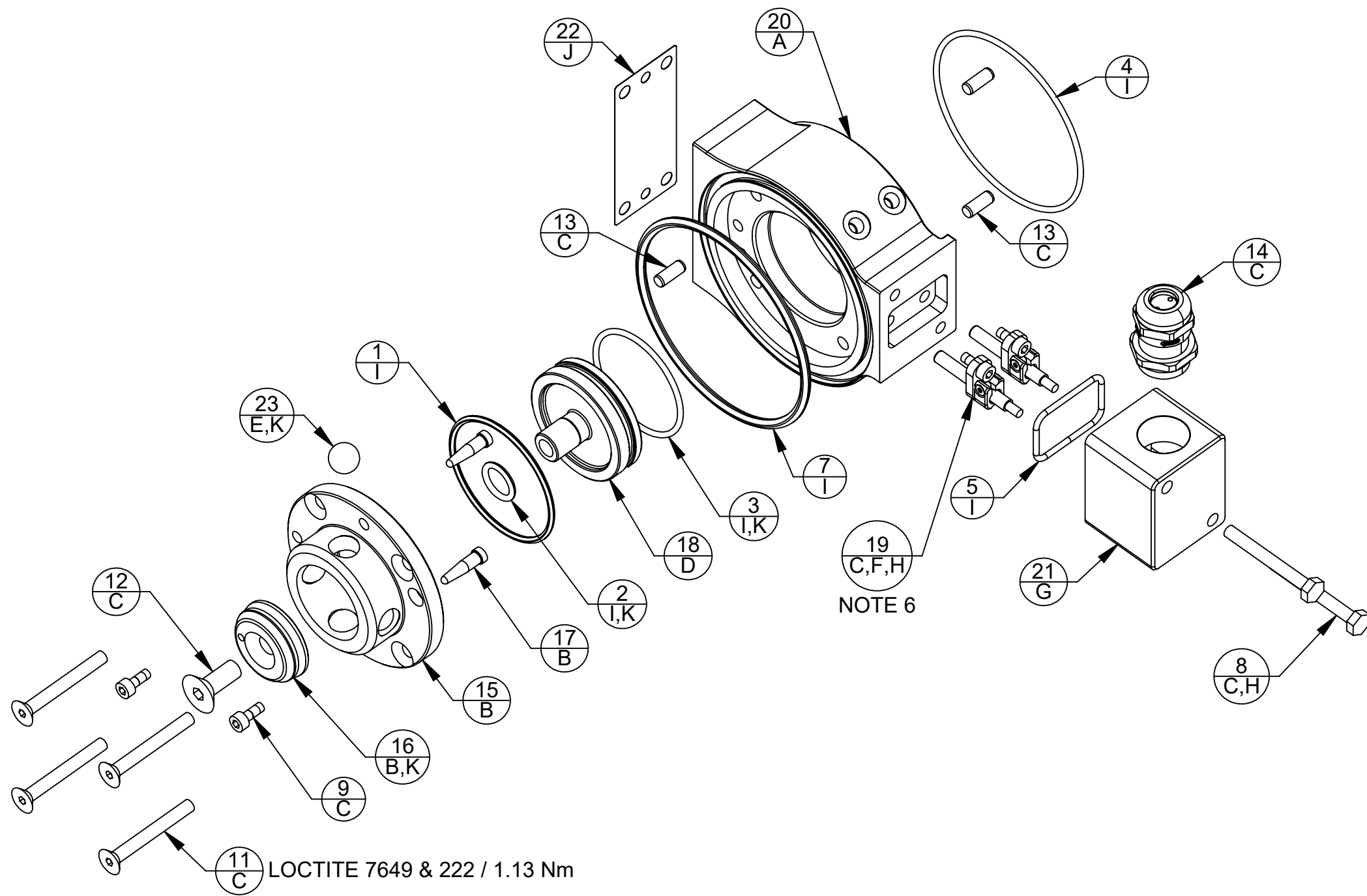
1031 Goodworth Drive, Apex, NC 27539, USA
 Tel: +1.919.772.0115 www.ati-ia.com
 Fax: +1.919.772.8259 ISO 9001 Registered Company

PROPERTY OF ATI INDUSTRIAL AUTOMATION, INC. NOT TO BE REPRODUCED IN ANY MANNER EXCEPT ON ORDER OR WITH PRIOR WRITTEN AUTHORIZATION OF ATI.

DRAWN BY: M. GALA 11/16/18		TITLE	
CHECKED BY: B. KENDRICK 11/19/18		QC-24Z1 TOOL CHANGER DRAWING	
PROJECT # 180419-5	SHEET 3 OF 5	SCALE	REVISION
		2:3	02
		SIZE	DRAWING NUMBER
		B	9630-20-024Z1

QC-24Z1 MASTER

9120-024MZ1-000-SX WITH 5m CABLES

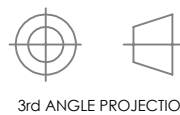


ITEM #
MATERIAL

- MATERIAL LIST:**
A. 304 STAINLESS STEEL
B. HARDENED STAINLESS STEEL WITH CORROSION RESISTANT PLATING
C. 18-8 STAINLESS STEEL
D. ALLOY STEEL WITH CORROSION RESISTANT PLATING
E. TUNGSTEN CARBIDE
F. ANODIZED ALUMINUM
G. BLACK DELRIN
H. VITON
I. BUNA-N
J. HIGH PURITY SILICONE RUBBER, FDA LISTED MATERIAL
K. JET-LUBE FMG (FOOD MACHINE GREASE)

NOTES: UNLESS OTHERWISE SPECIFIED.

DO NOT SCALE DRAWING. ALL DIMENSIONS ARE IN MILLIMETERS.



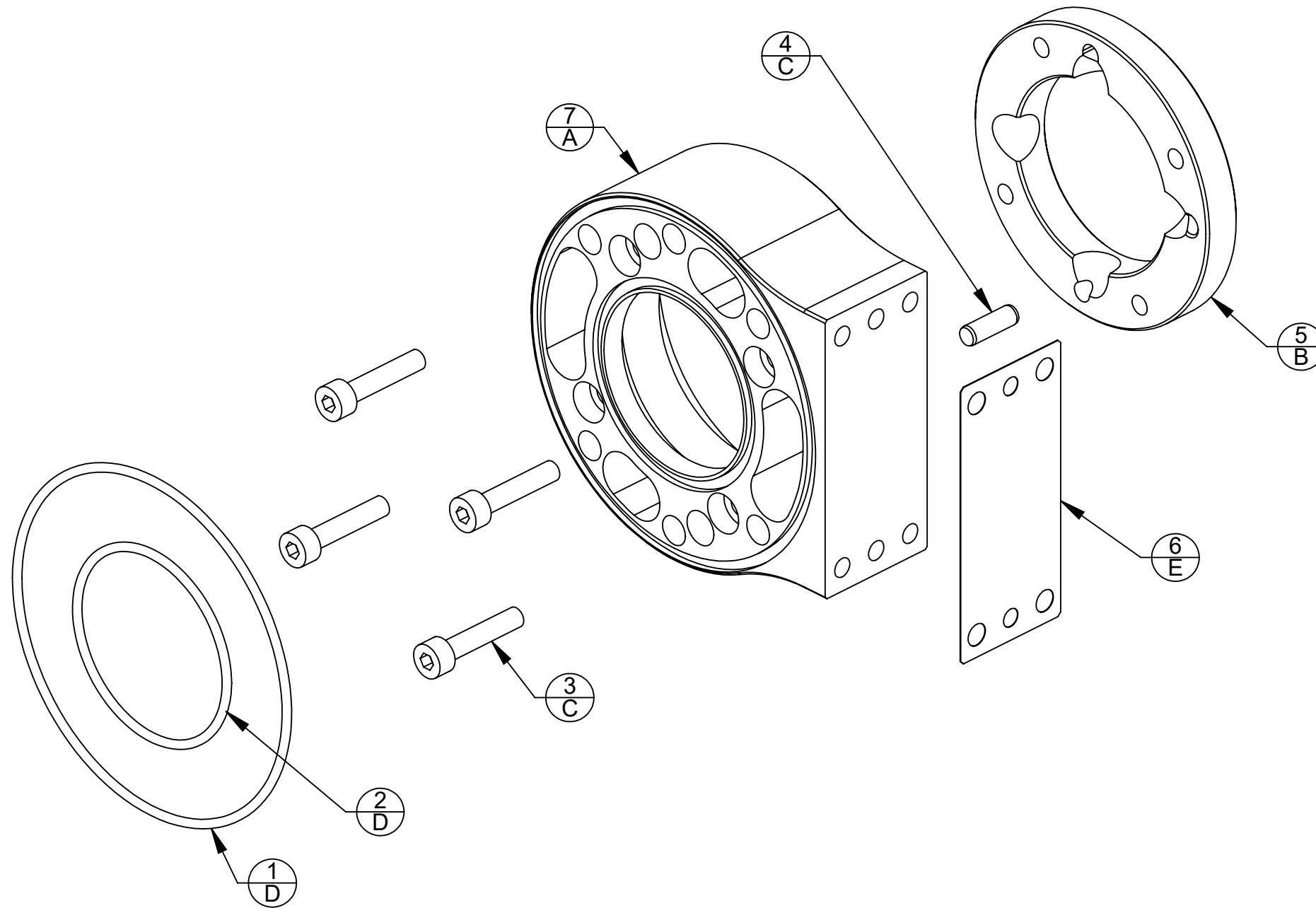
1031 Goodworth Drive, Apex, NC 27539, USA
Tel: +1.919.772.0115 www.ati-ia.com
Fax: +1.919.772.8259 ISO 9001 Registered Company

PROPERTY OF ATI INDUSTRIAL AUTOMATION, INC. NOT TO BE REPRODUCED IN ANY MANNER EXCEPT ON ORDER OR WITH PRIOR WRITTEN AUTHORIZATION OF ATI.

DRAWN BY: M. GALA 11/16/18		TITLE QC-24Z1 TOOL CHANGER DRAWING		
CHECKED BY: B. KENDRICK 11/19/18		SCALE	SIZE	DRAWING NUMBER
PROJECT # 180419-5 SHEET 4 OF 5		2:3	B	9630-20-024Z1
				REVISION 02

QC-24Z1 TOOL

9120-024TZ1-000

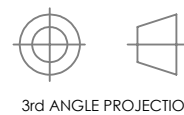


ITEM #
MATERIAL

- MATERIAL LIST:**
 A. 304 STAINLESS STEEL
 B. PRECIPITATION HARDENED STAINLESS STEEL
 C. 18-8 STAINLESS STEEL
 D. BUNA-N
 E. HIGH PURITY SILICONE RUBBER, FDA LISTED MATERIAL

NOTES: UNLESS OTHERWISE SPECIFIED.

DO NOT SCALE DRAWING.
ALL DIMENSIONS ARE IN MILLIMETERS.



1031 Goodworth Drive, Apex, NC 27539, USA
 Tel: +1.919.772.0115 www.ati-ia.com
 Fax: +1.919.772.8259 ISO 9001 Registered Company

PROPERTY OF ATI INDUSTRIAL AUTOMATION, INC. NOT TO BE REPRODUCED IN ANY MANNER EXCEPT ON ORDER OR WITH PRIOR WRITTEN AUTHORIZATION OF ATI.

DRAWN BY: M. GALA 11/16/18		TITLE		
CHECKED BY: B. KENDRICK 11/19/18		QC-24Z1 TOOL CHANGER DRAWING		
SCALE	SIZE	DRAWING NUMBER	REVISION	
1:1	B	9630-20-024Z1	02	
PROJECT # 180419-5		SHEET 5 OF 5		