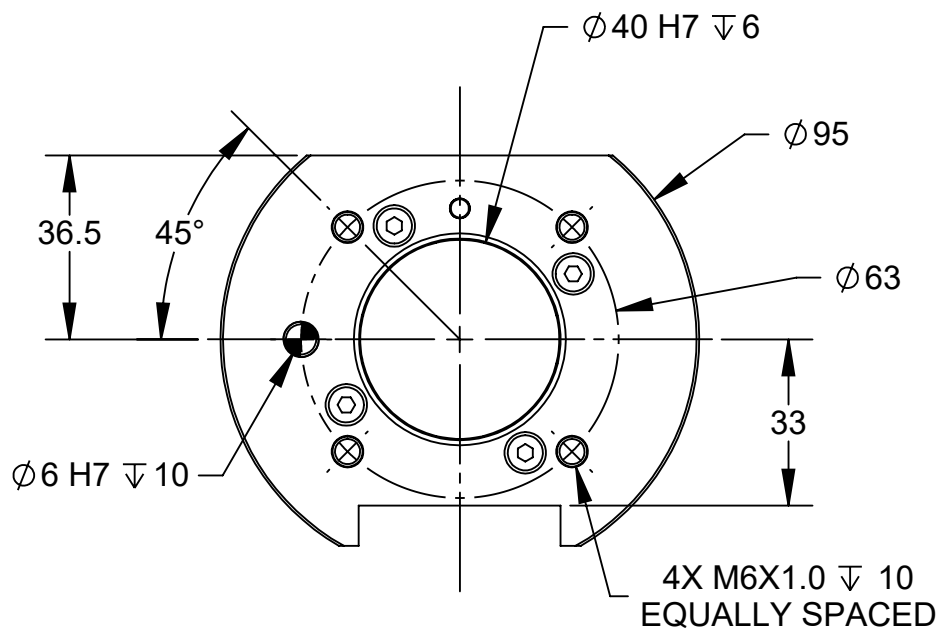
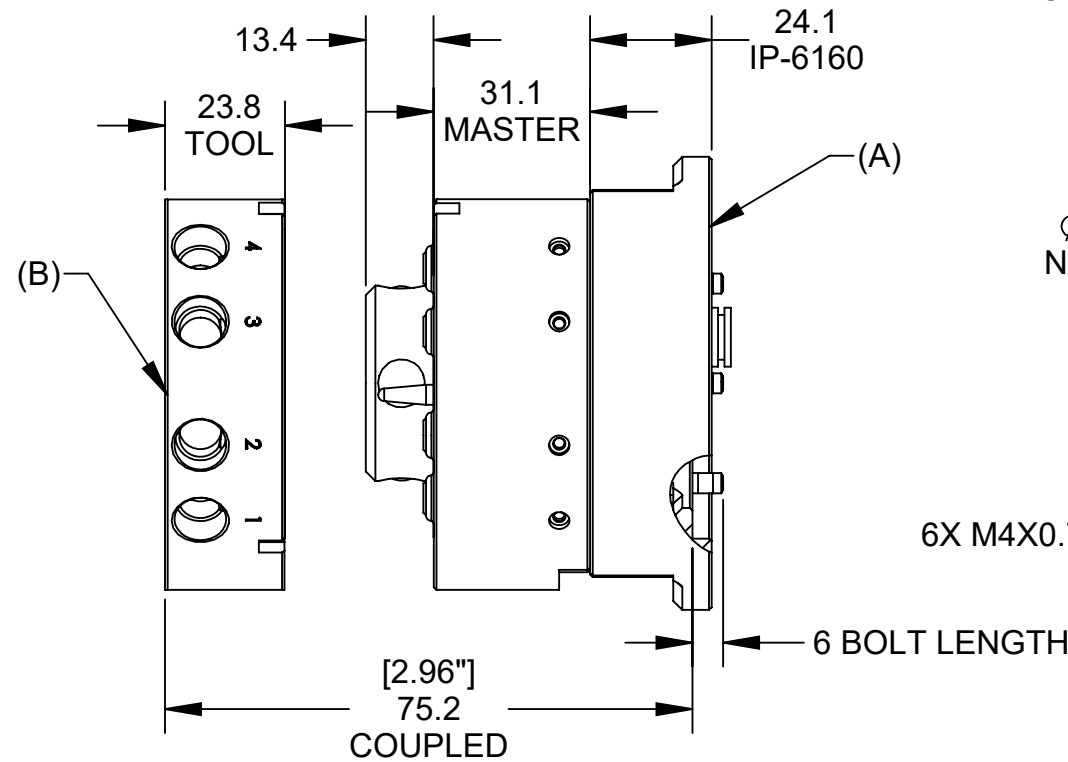


PART NUMBERS:
 (A) MASTER 9120-021HM-000-000-SX-6160
 (B) TOOL: 9120-021T-000-000

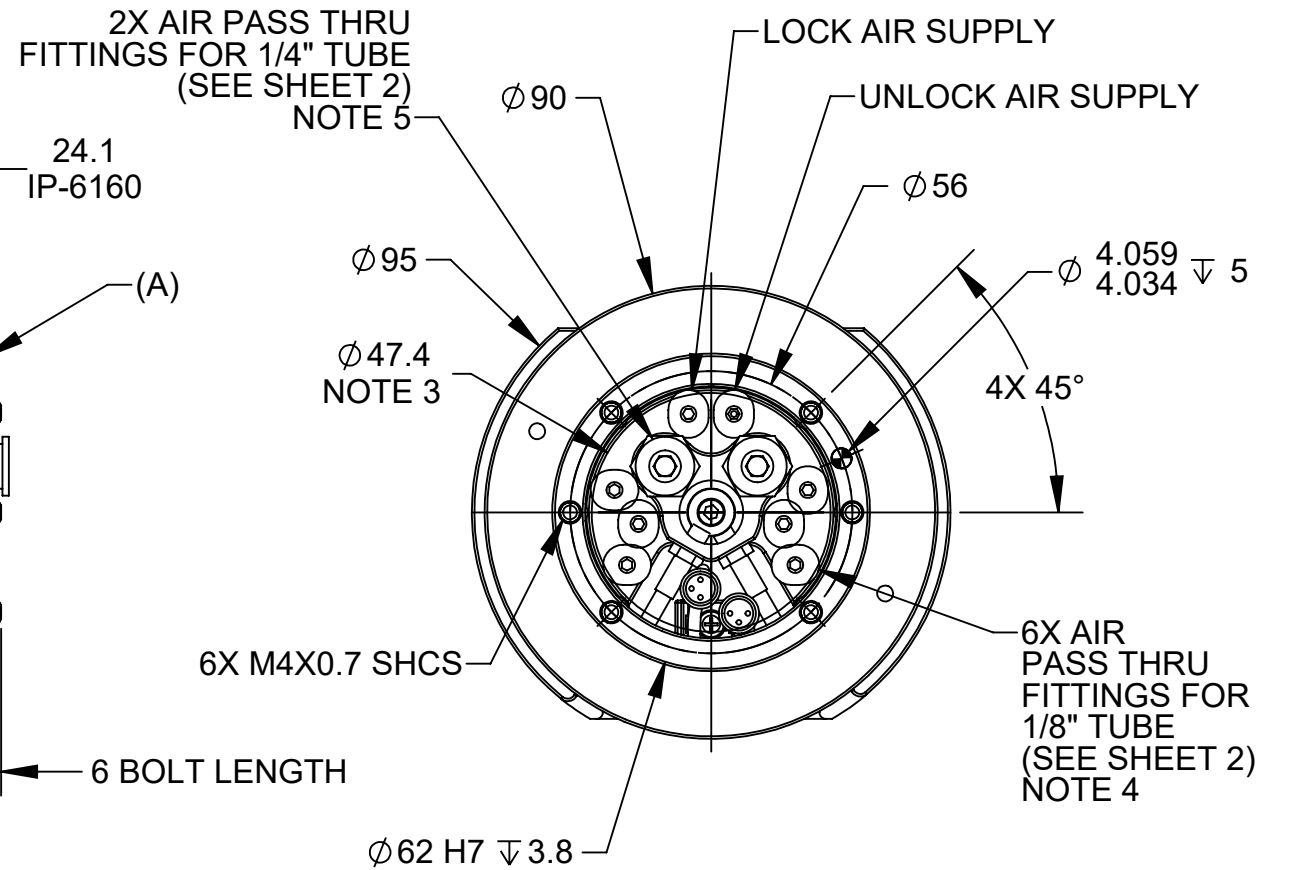
REV.	DESCRIPTION	INITIATOR	DATE
02	ECO 21577: Changed Unlock and Lock labels on Sheets 1 and 2.	AMM	8/16/2023



TOOL SIDE

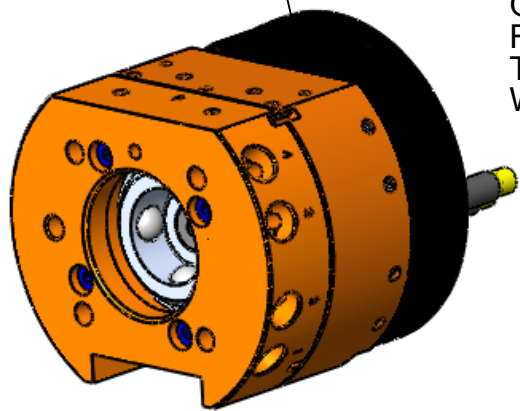


SIDE VIEW UNCOUPLED

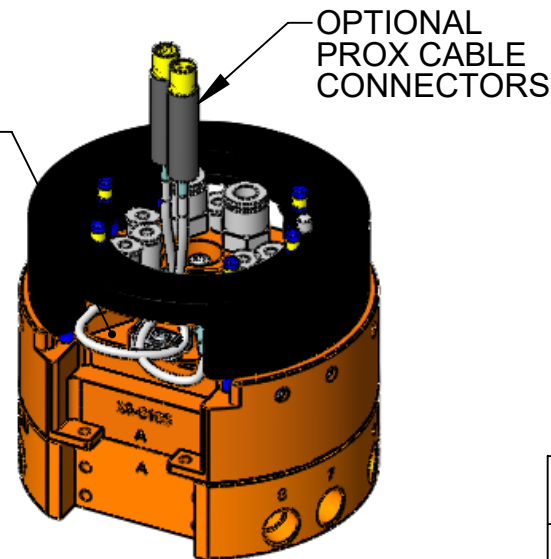


MASTER SIDE

OPENING FOR WIRE ROUTING ACCESS THROUGH ROBOT WRIST



OPENING FOR WIRE ROUTING ACCESS THROUGH ROBOT WRIST

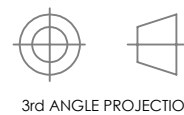


NOTES:

1. MASTER SIDE MOUNTING HARDWARE PROVIDED.
2. DRAWING SHOWS A PROPOSED MASTER SIDE ASSEMBLY FOR DIRECT MOUNT TO HOLLOW WRIST ROBOTS.
3. DIMENSION INDICATES THE PERIMETER FOR PNEUMATIC FITTINGS. COMPONENTS WILL CLEAR THE 50mm HOLLOW WRIST DIMENSION.
4. TUBE FITTING CONNECTION TO MASTER TOOL CHANGER BODY: M6X1.0 TAP 7.62 VENDOR PN: PISCO POC 1/8-M6M
5. TUBE FITTING CONNECTION TO MASTER TOOL CHANGER BODY: 1/8 NPT. VENDOR PN: CAMOZZI 6510 04-02.
6. 'SX' IN THE MASTER PART NUMBER DESIGNATES LOCK/UNLOCK SENSING VARIOUS OPTIONS ARE AVAILABLE
7. SHOWN WITH IP-6160 INTERFACE PLATE, IP'S FOR OTHER PATTERNS AVAILABLE UPON REQUEST.
8. CONTACT ATI FOR FULL PART NUMBERS AND LIST OF OPTIONS.

NOTES: UNLESS OTHERWISE SPECIFIED.

DO NOT SCALE DRAWING. ALL DIMENSIONS ARE IN MILLIMETERS.

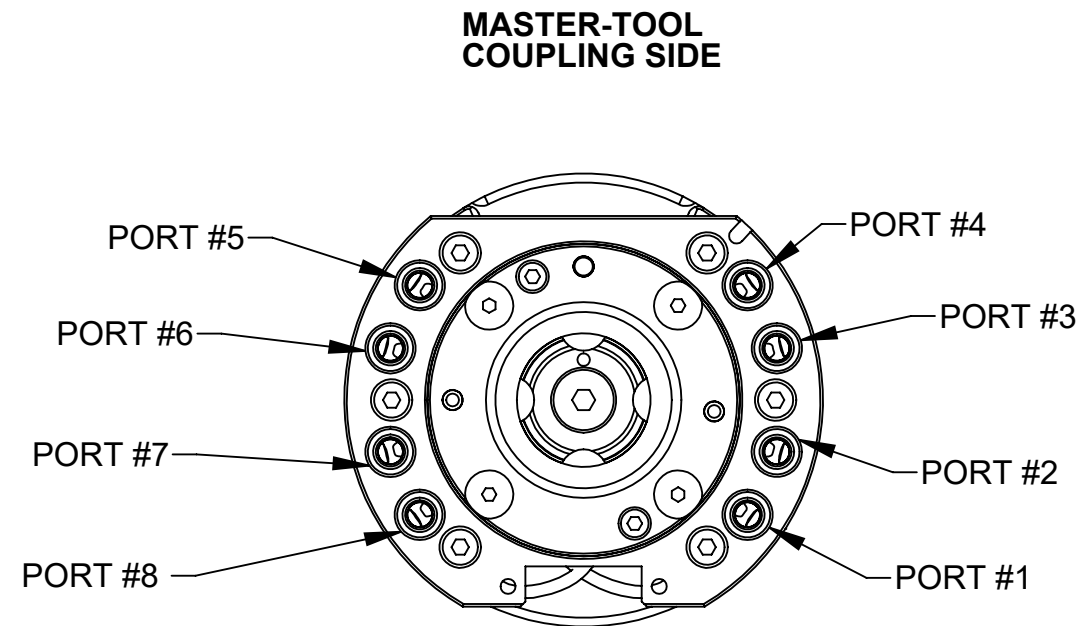
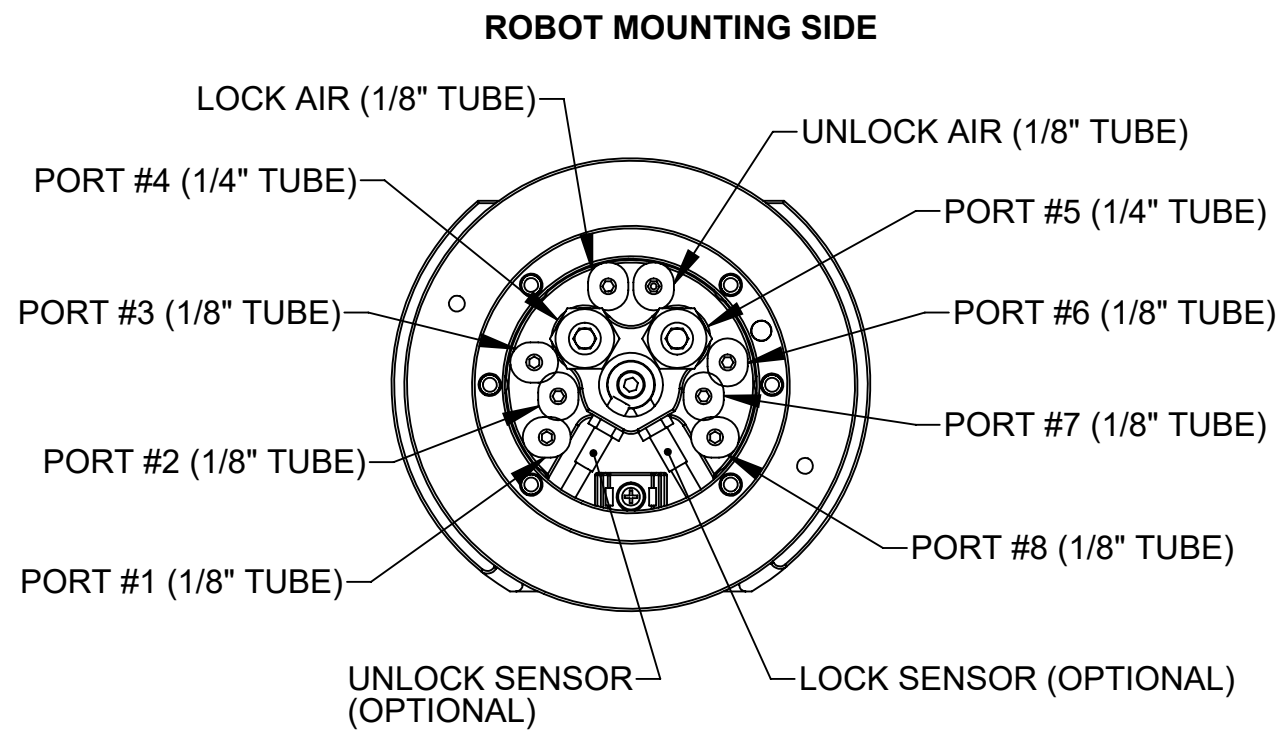


3rd ANGLE PROJECTION

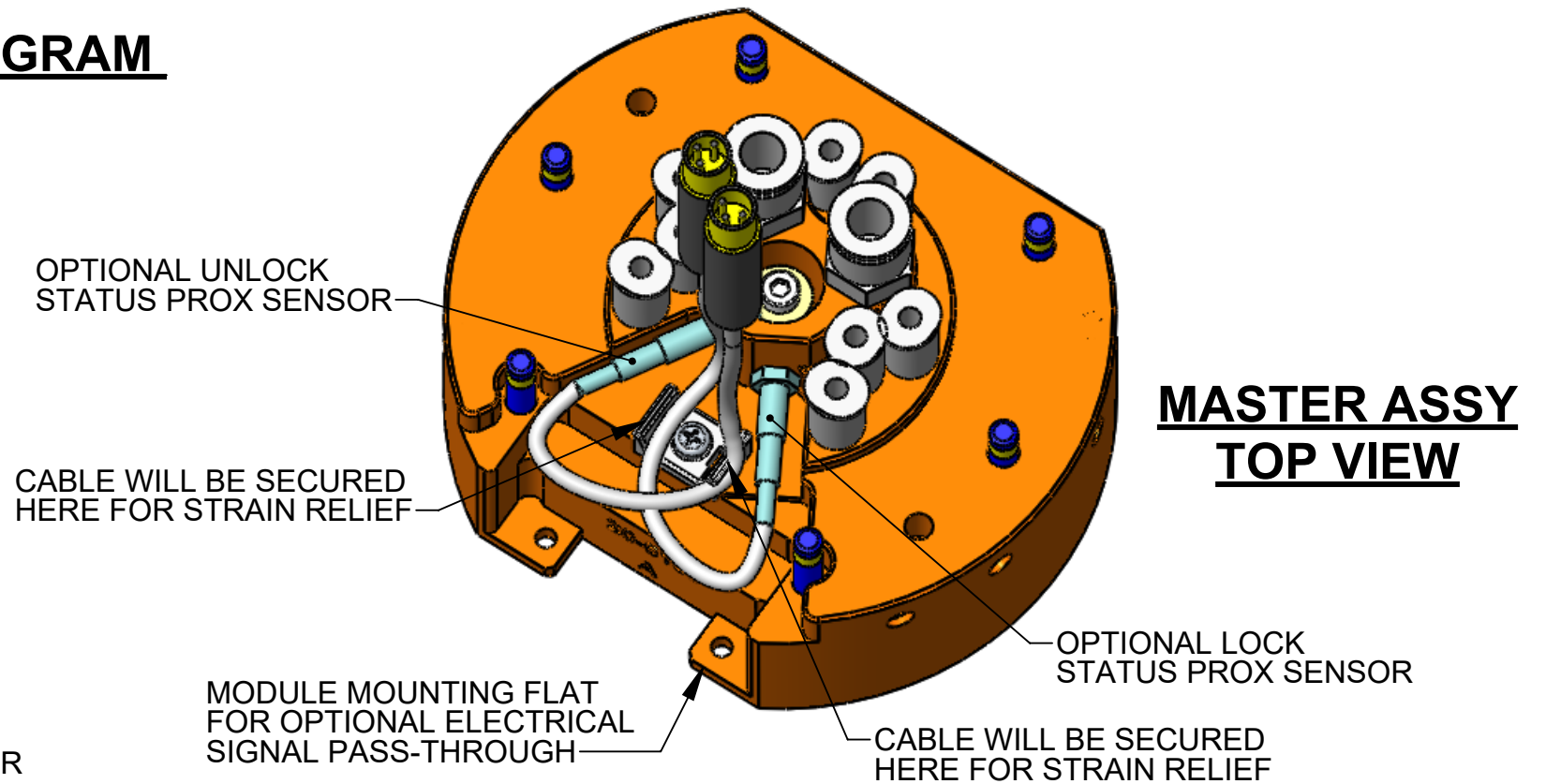
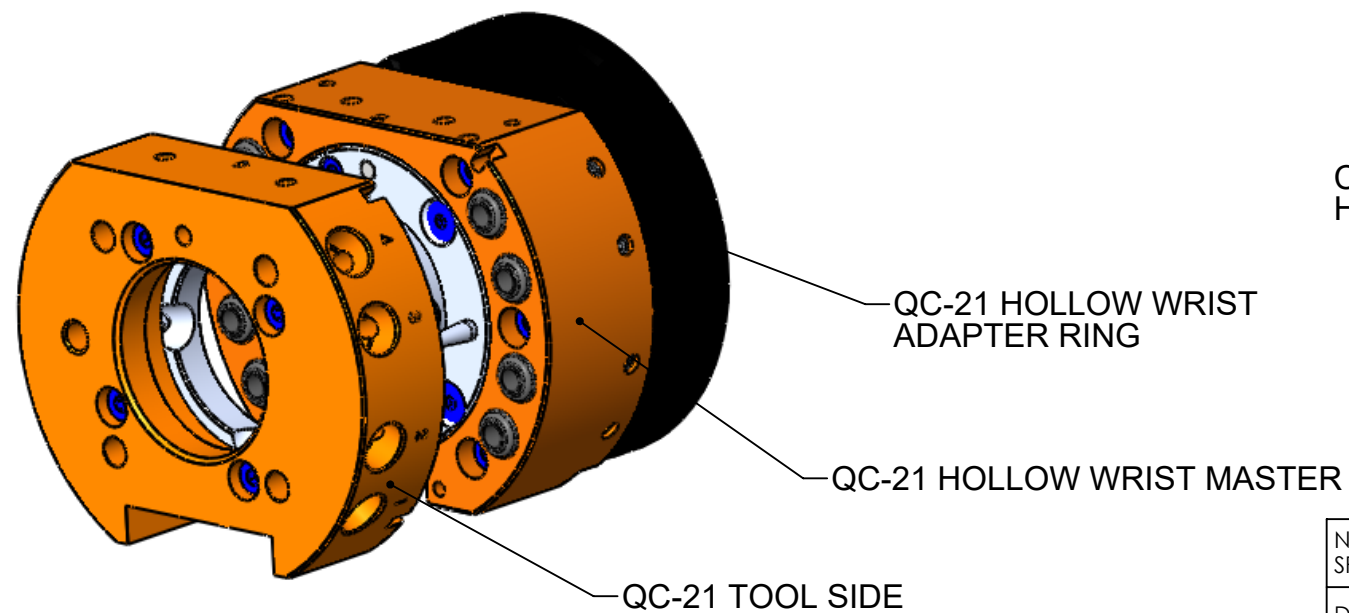
1031 Goodworth Drive, Apex, NC 27539, USA
 Tel: +1.919.772.0115 www.ati-ia.com
 Fax: +1.919.772.8259 ISO 9001 Registered Company

PROPERTY OF ATI INDUSTRIAL AUTOMATION, INC. NOT TO BE REPRODUCED IN ANY MANNER EXCEPT ON ORDER OR WITH PRIOR WRITTEN AUTHORIZATION OF ATI.

DRAWN BY: N. BADER, 7/30/2020		TITLE	
CHECKED BY: D. WAGNER, 8/4/2020		QC-21 HOLLOW WRIST TOOL CHANGER	
PROJECT # -	SHEET 1 OF 4	SCALE	REVISION
		2:3	02
		SIZE	DRAWING NUMBER
		B	9630-20-021HM

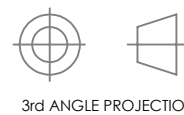


AIR LINE CONNECTION DIAGRAM



NOTES: UNLESS OTHERWISE SPECIFIED.

DO NOT SCALE DRAWING. ALL DIMENSIONS ARE IN MILLIMETERS.



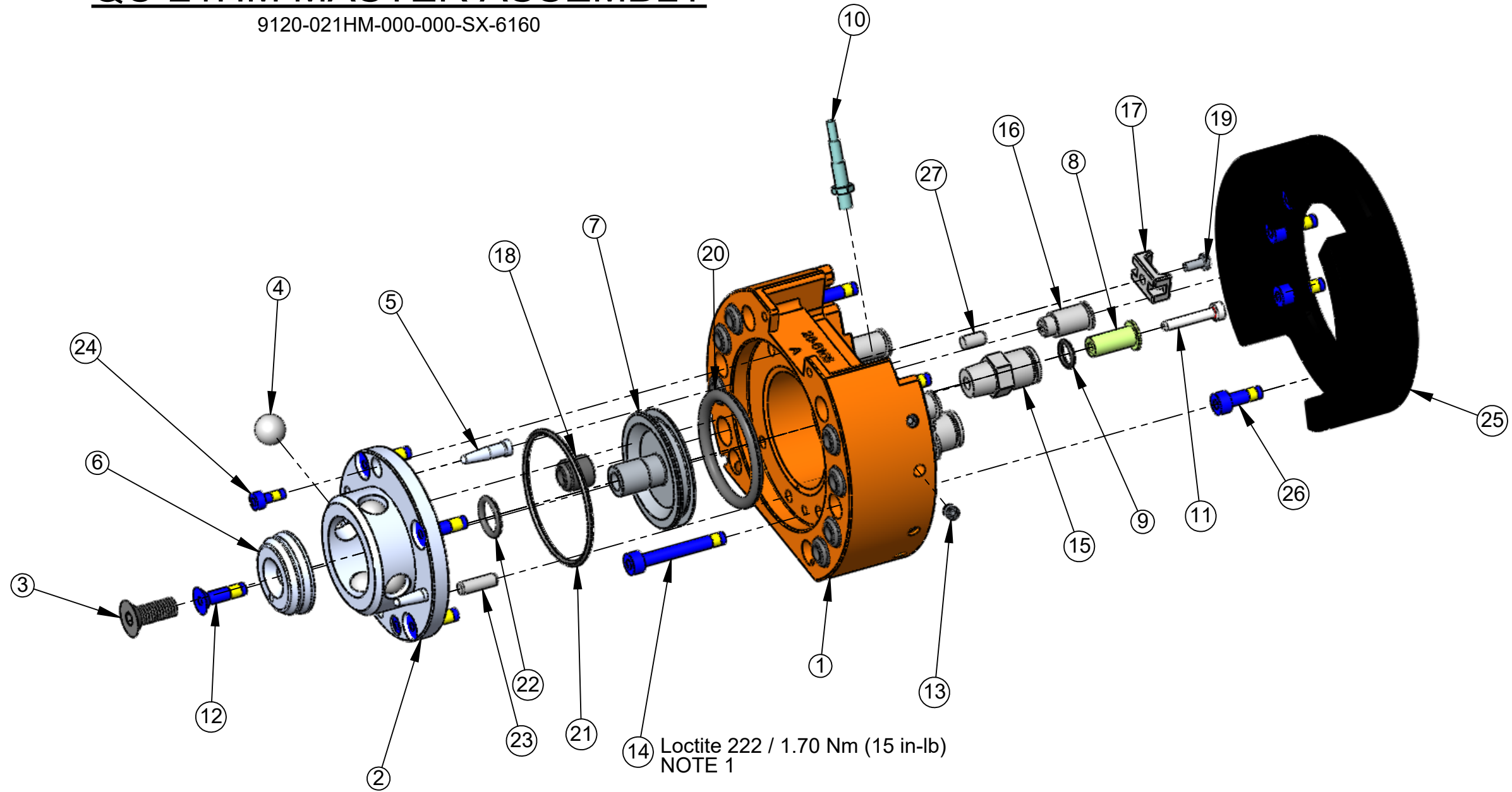
1031 Goodworth Drive, Apex, NC 27539, USA
 Tel: +1.919.772.0115 www.ati-ia.com
 Fax: +1.919.772.8259 ISO 9001 Registered Company

PROPERTY OF ATI INDUSTRIAL AUTOMATION, INC. NOT TO BE REPRODUCED IN ANY MANNER EXCEPT ON ORDER OR WITH PRIOR WRITTEN AUTHORIZATION OF ATI.

DRAWN BY: N. BADER, 7/30/2020		TITLE	
CHECKED BY: D. WAGNER, 8/4/2020		QC-21 HOLLOW WRIST TOOL CHANGER	
PROJECT # -	SHEET 2 OF 4	SCALE	SIZE
		2:3	B
		DRAWING NUMBER	REVISION
		9630-20-021HM	02

QC-21HM MASTER ASSEMBLY

9120-021HM-000-000-SX-6160

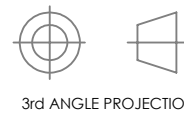


14 Loctite 222 / 1.70 Nm (15 in-lb)
NOTE 1

NOTES:
1. ASSEMBLE WITH FASTENERS AS LABELED

NOTES: UNLESS OTHERWISE SPECIFIED.

DO NOT SCALE DRAWING.
ALL DIMENSIONS ARE IN MILLIMETERS.



DRAWN BY: N. BADER, 7/30/2020

CHECKED BY: D. WAGNER, 8/4/2020

PROJECT # -

SHEET 3 OF 4

1031 Goodworth Drive, Apex, NC 27539, USA
Tel: +1.919.772.0115 www.ati-ia.com
Fax: +1.919.772.8259 ISO 9001 Registered Company

PROPERTY OF ATI INDUSTRIAL AUTOMATION, INC. NOT TO BE REPRODUCED IN ANY MANNER EXCEPT ON ORDER OR WITH PRIOR WRITTEN AUTHORIZATION OF ATI.

TITLE
QC-21 HOLLOW WRIST TOOL CHANGER

SCALE
2:3

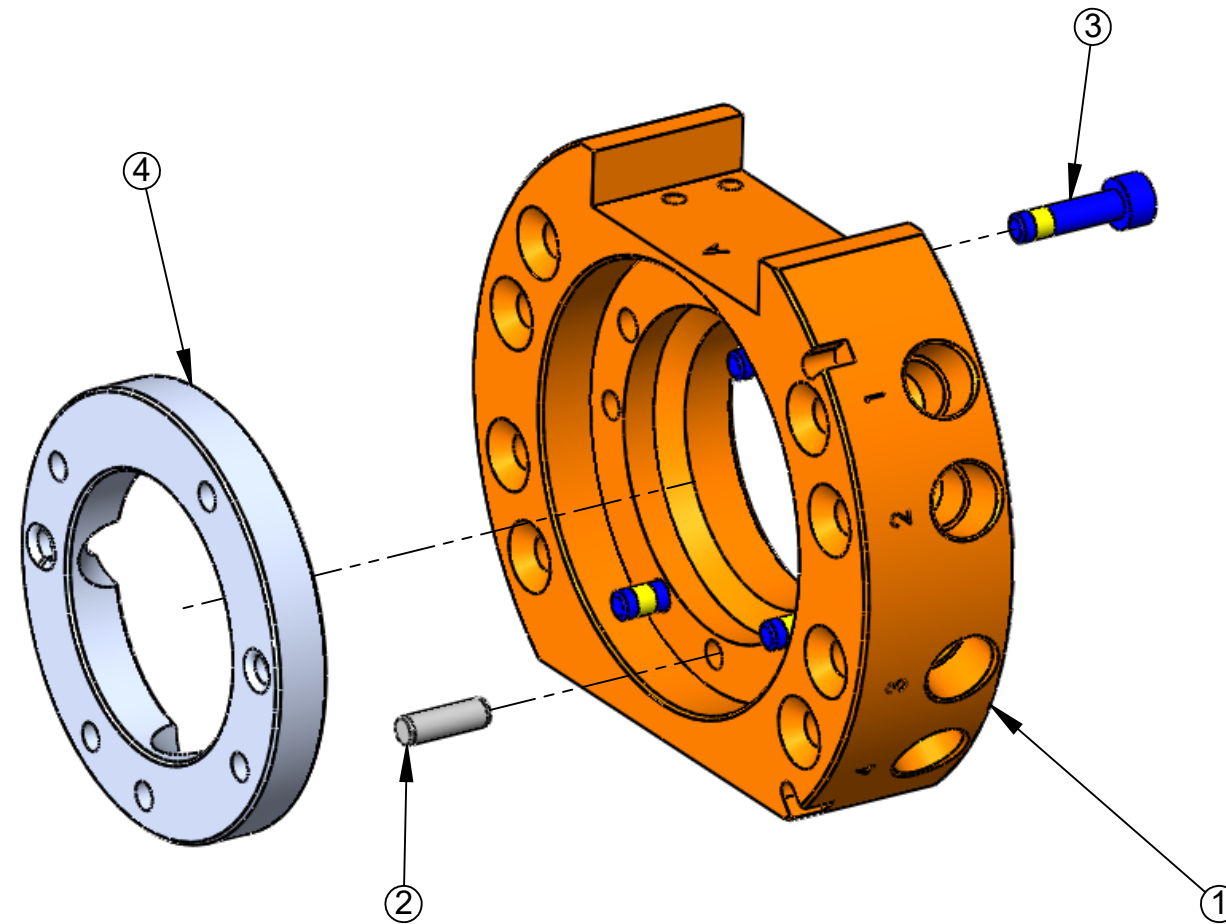
SIZE
B

DRAWING NUMBER
9630-20-021HM

REVISION
02

QC-21 TOOL ASSEMBLY

9120-021T-000-000



NOTES: UNLESS OTHERWISE SPECIFIED.

DO NOT SCALE DRAWING. ALL DIMENSIONS ARE IN MILLIMETERS.



3rd ANGLE PROJECTION



1031 Goodworth Drive, Apex, NC 27539, USA
 Tel: +1.919.772.0115 www.ati-ia.com
 Fax: +1.919.772.8259 ISO 9001 Registered Company

PROPERTY OF ATI INDUSTRIAL AUTOMATION, INC. NOT TO BE REPRODUCED IN ANY MANNER EXCEPT ON ORDER OR WITH PRIOR WRITTEN AUTHORIZATION OF ATI.

DRAWN BY: N. BADER, 7/30/2020

CHECKED BY: D. WAGNER, 8/4/2020

TITLE
QC-21 HOLLOW WRIST TOOL CHANGER

PROJECT # - SHEET 4 OF 4

SCALE	SIZE	DRAWING NUMBER	REVISION
1:1	B	9630-20-021HM	02