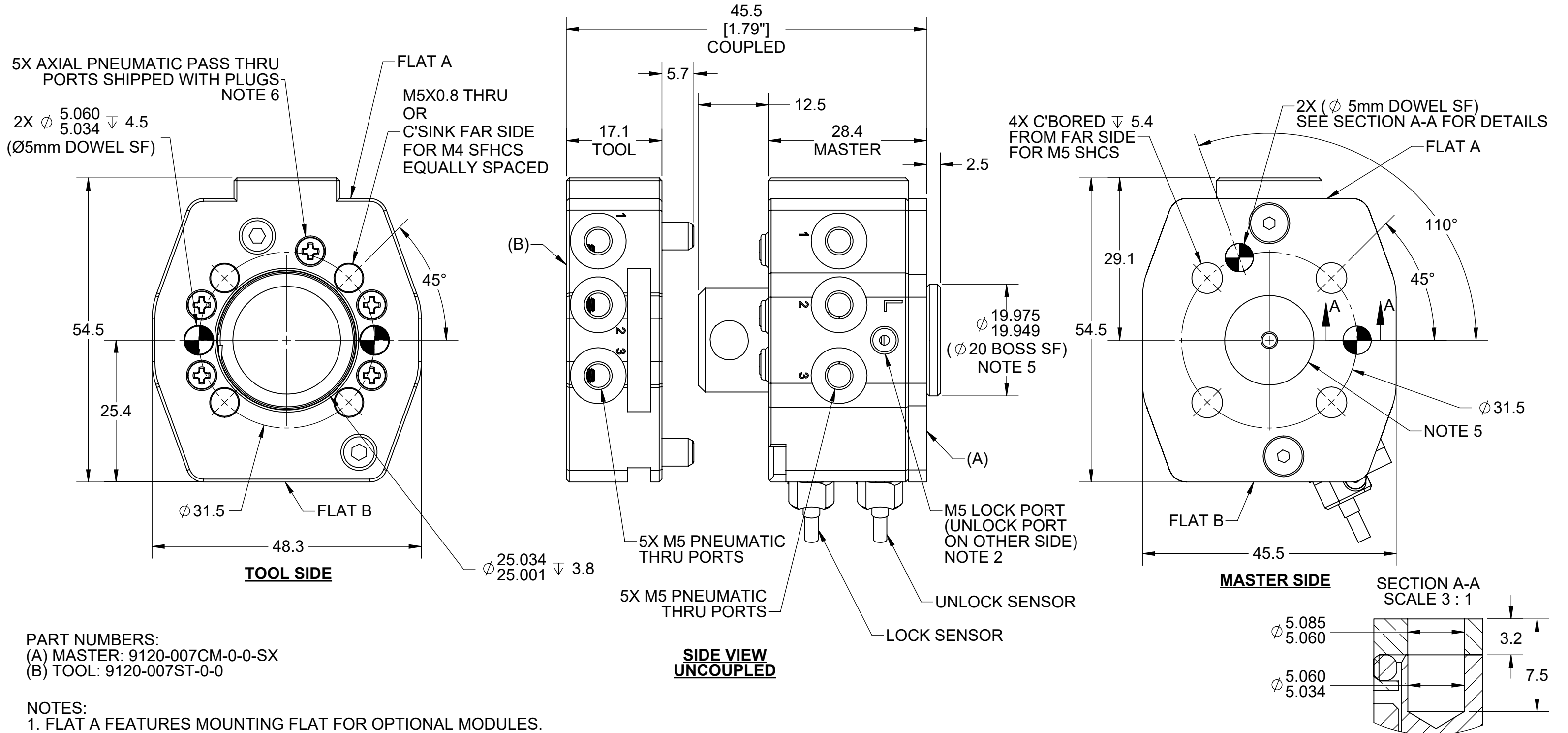


REV.	DESCRIPTION	INITIATOR	DATE
04	ECO 21388: Added $\phi 31.5$ BC callout on Sheet 1.	BAW	7/19/2023

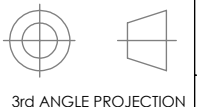


PART NUMBERS:
 (A) MASTER: 9120-007CM-0-0-SX
 (B) TOOL: 9120-007ST-0-0

- NOTES:
- FLAT A FEATURES MOUNTING FLAT FOR OPTIONAL MODULES.
 - MASTER SIDE INCLUDES 4mm TUBE FITTINGS FOR LOCK AND UNLOCK PORTS. FITTINGS ARE NOT SHOWN FOR CLARITY.
 - '-SX' IN MASTER PART NUMBER DENOTES SENSOR OPTIONS ARE AVAILABLE.
 - SLOTTED TOOL SIDE INTERFACES DIRECTLY WITH 9120-TSS-MMS-11345 (SEE SHEET 3).
 - OPTIONAL MASTER SIDE MOUNTING BOSSES AVAILABLE.
 A. 9120-007AM... : QC-7 MASTER WITHOUT A BOSS
 B. 9120-007BM... : QC-7 MASTER WITH A 12mm BOSS ($\phi 11.974/\phi 11.948$)
 C. 9120-007CM... : QC-7 MASTER WITH A 20mm BOSS ($\phi 19.975/\phi 19.949$) (DEFAULT)
 - TOOL SIDE OFFERS OPTIONAL AXIAL PORTS WHEN THE PLUGS ARE REMOVED. TOOL SIDE INCLUDES O-RINGS TO SEAL THE AXIAL PORTS WHEN PLUGS ARE REMOVED. SEE SHEET 2 FOR DETAILS.
 - CONTACT ATI FOR FULL PART NUMBERS AND LIST OF OPTIONS.

NOTES: UNLESS OTHERWISE SPECIFIED.

DO NOT SCALE DRAWING. ALL DIMENSIONS ARE IN MILLIMETERS.



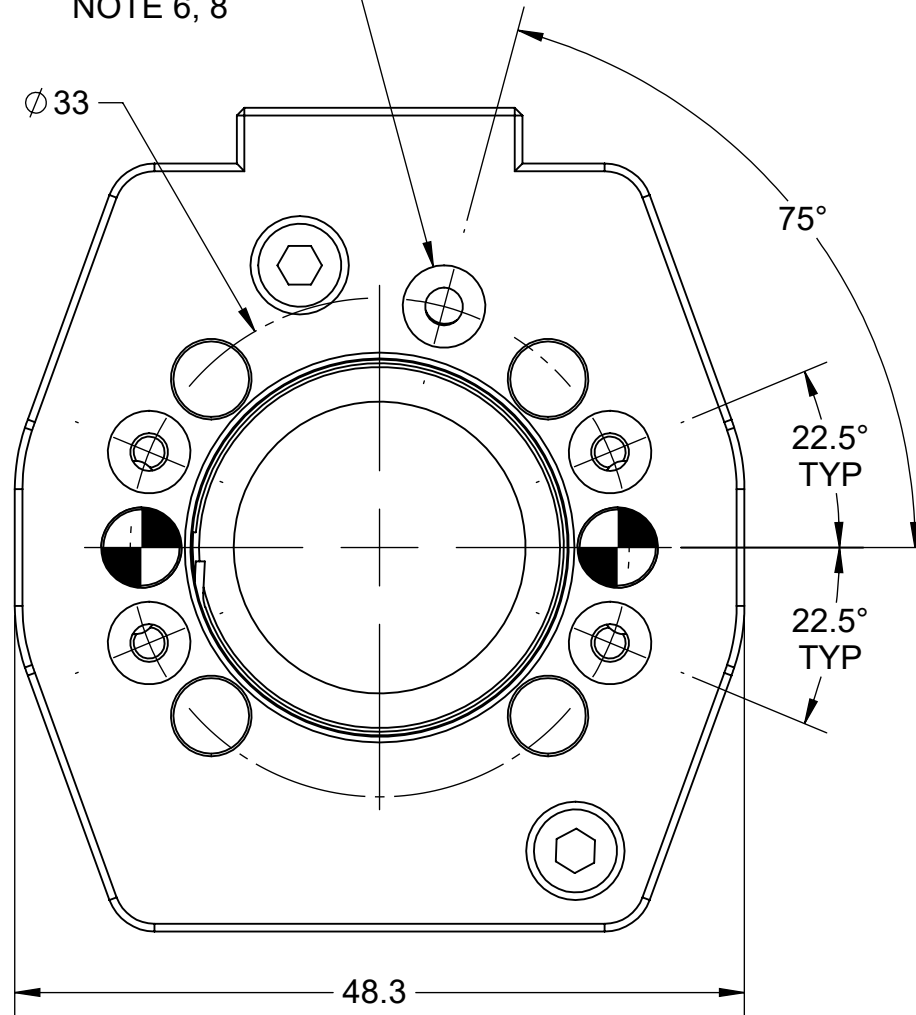
1031 Goodworth Drive, Apex, NC 27539, USA
 Tel: +1.919.772.0115 www.ati-ia.com
 Fax: +1.919.772.8259 ISO 9001 Registered Company

PROPERTY OF ATI INDUSTRIAL AUTOMATION, INC. NOT TO BE REPRODUCED IN ANY MANNER EXCEPT ON ORDER OR WITH PRIOR WRITTEN AUTHORIZATION OF ATI.

DRAWN BY: M. GALA 12/17/19		TITLE	
CHECKED BY: B. FITZPATRICK 12/18/19		QC-7 TOOL CHANGER WITH SLOTTED TOOL DRAWING	
SCALE	SIZE	DRAWING NUMBER	REVISION
3:2	B	9630-20-007CM 007ST	04
PROJECT # 190501-2 SHEET 1 OF 5			

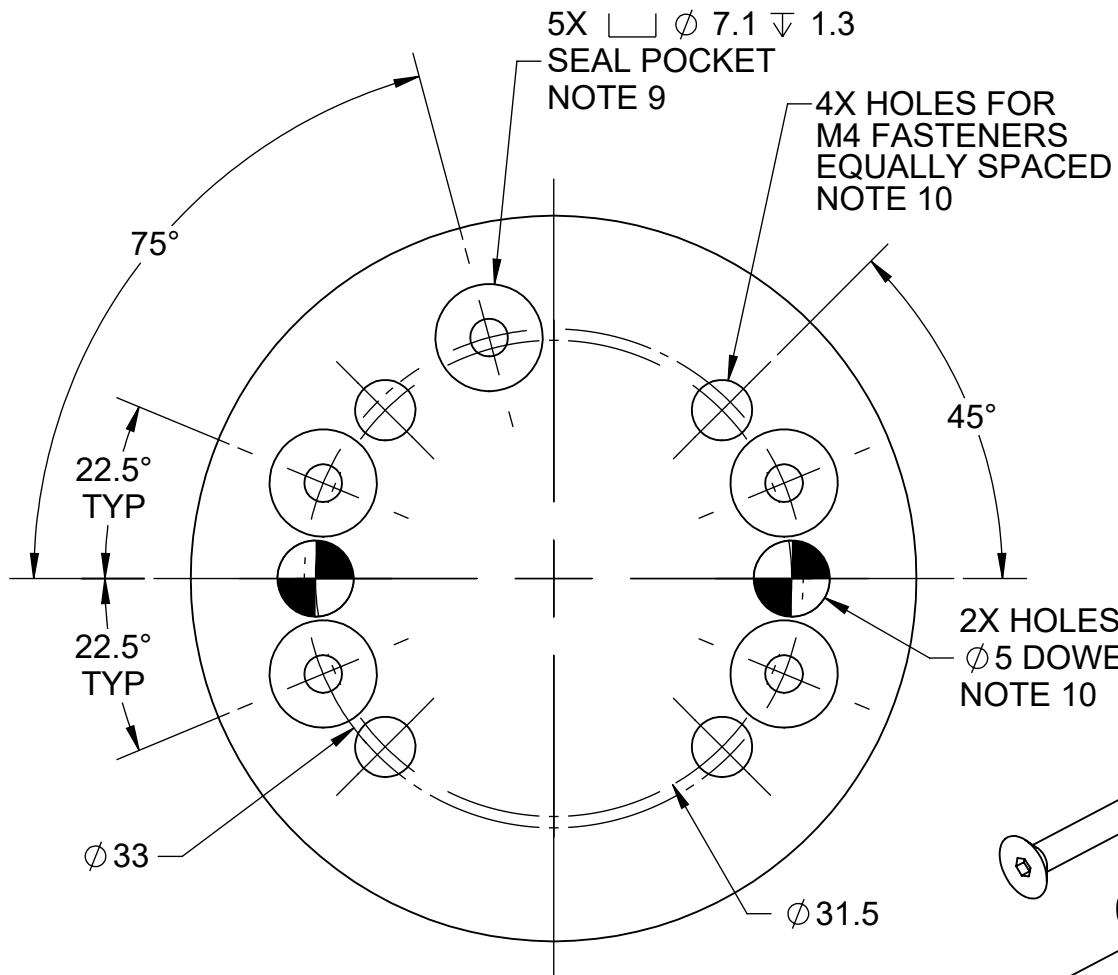
TOOL SIDE AXIAL PORT INTERFACE DETAIL

5X \square $\phi 5.5 \nabla 2$
(PLUGS NOT SHOWN)
NOTE 6, 8



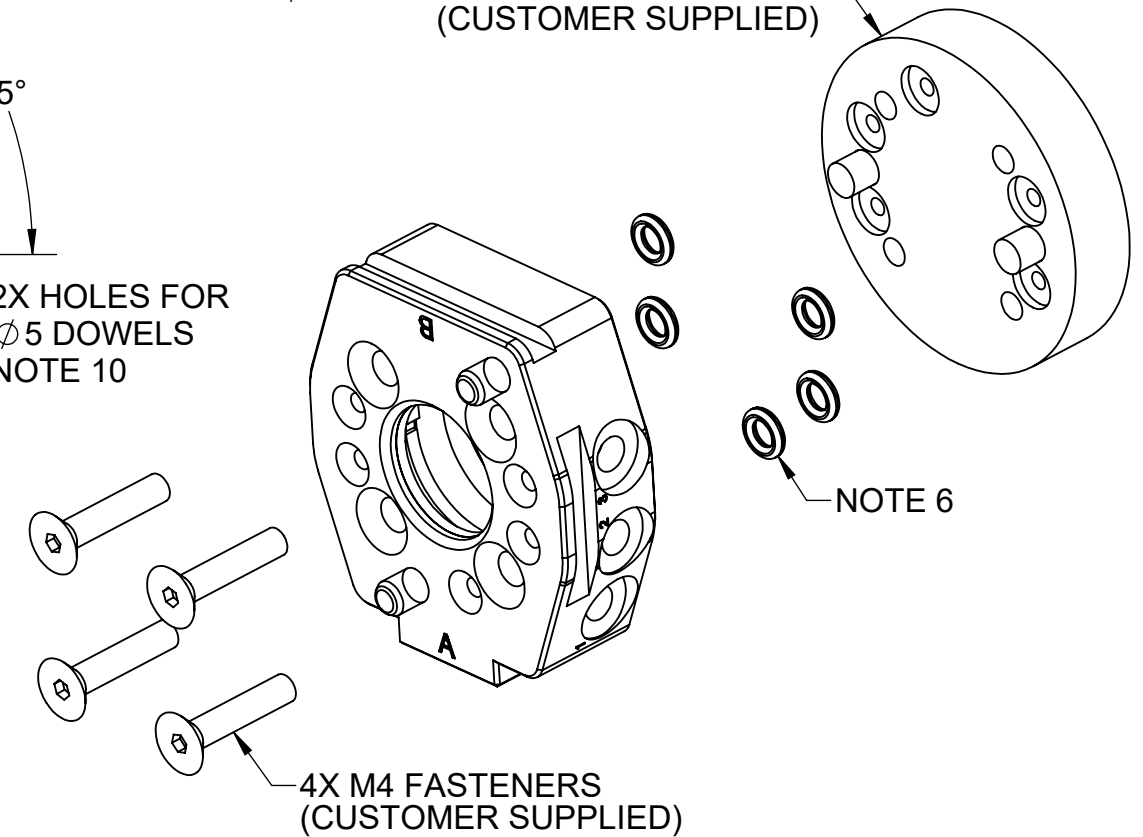
QC-7 SLOTTED TOOL ASSEMBLY
9120-007ST-0-0

5X \square $\phi 7.1 \nabla 1.3$
SEAL POCKET
NOTE 9



**RECOMMENDED CUSTOMER INTERFACE
DETAIL FOR AXIAL PORTS**

PLATE WITH AXIAL PORTS AND
 $\phi 5$ mm DOWELS FOR ALIGNMENT
(CUSTOMER SUPPLIED)



NOTES:

8. AXIAL PORTS ARE NOT INDEPENDENT OF RADIAL PORTS. IF AXIAL PORTING IS USED, THEN RADIAL PORTS SHOULD BE PLUGGED AND VICE VERSA.
9. CUSTOMER INTERFACE PLATE MUST HAVE FEATURES SHOWN TO ENSURE PROPER SEALING OF THE O-RINGS INCLUDED WITH THE TOOL SIDE.
10. M4 AND 5mm DOWEL FEATURES ARE DESCRIBED IN GENERAL TERMS. CUSTOMERS WILL HAVE SPECIFIC REQUIREMENTS FOR THREAD PITCH AND HOLE CLEARANCES.

COMPATIBLE O-RING SEALS:

- ATI# 3410-0001170-01: O-RING, SIZE AS568A-007, NITRILE (INCLUDED)
- ATI# 3410-0001532-01: O-RING, SIZE 1.6mm X 4mm X 7.2mm, NITRILE

NOTES: UNLESS OTHERWISE SPECIFIED.

DO NOT SCALE DRAWING.
ALL DIMENSIONS ARE IN
MILLIMETERS.



3rd ANGLE PROJECTION

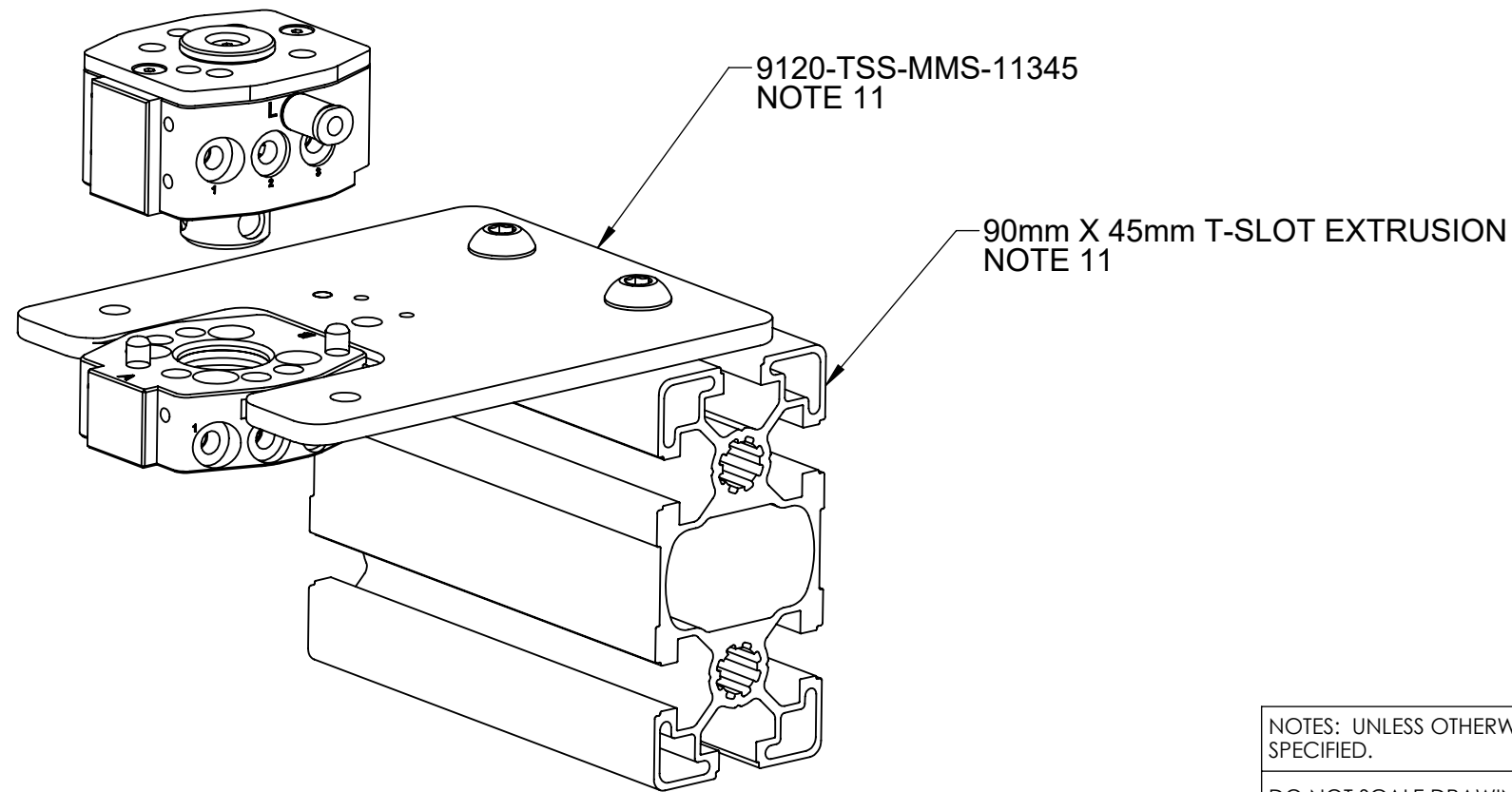
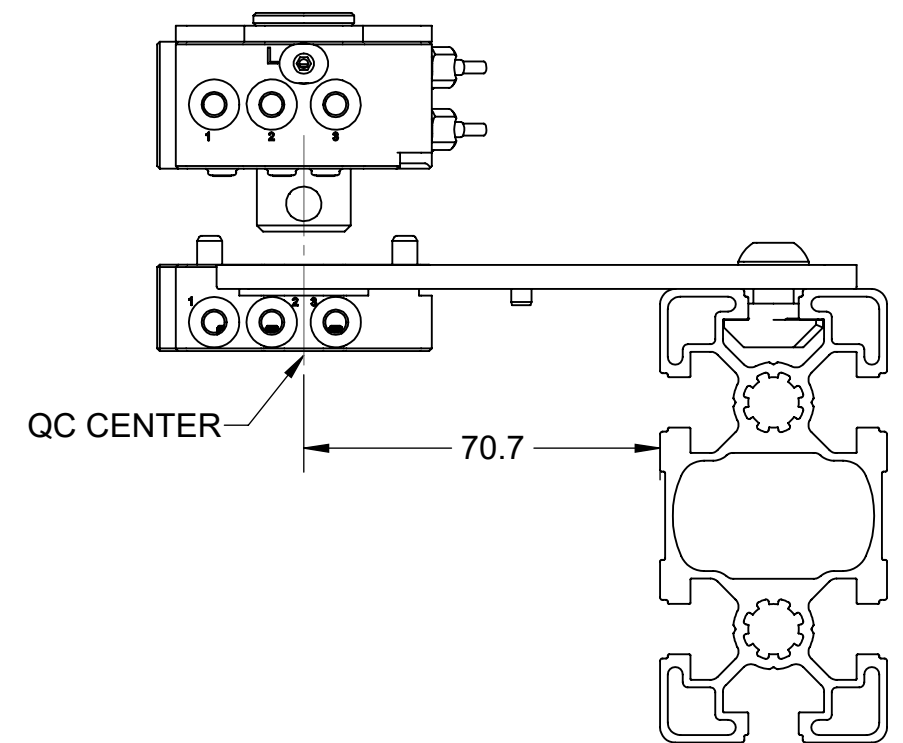
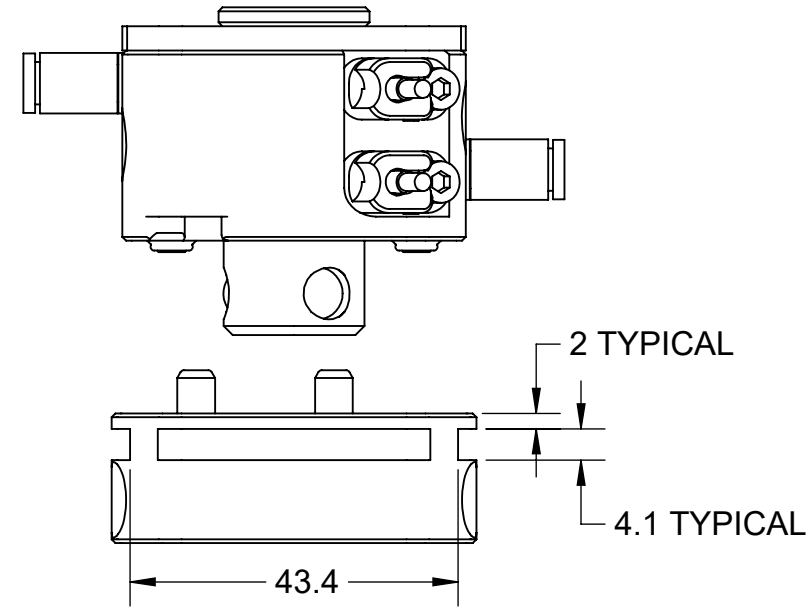
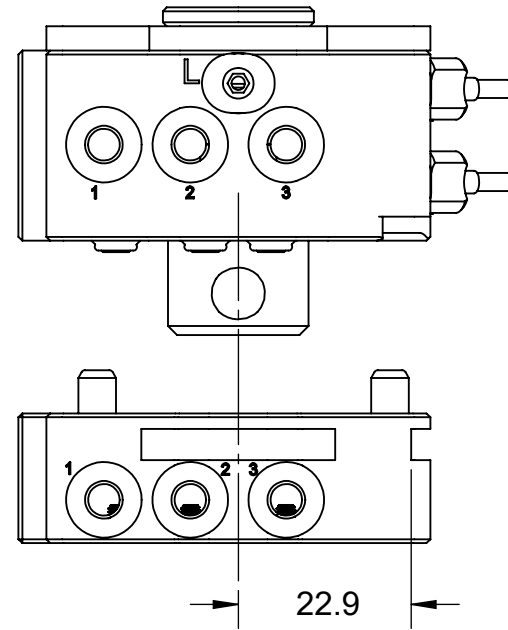


1031 Goodworth Drive, Apex, NC 27539, USA
Tel: +1.919.772.0115 www.ati-ia.com
Fax: +1.919.772.8259 ISO 9001 Registered Company

PROPERTY OF ATI INDUSTRIAL AUTOMATION, INC. NOT TO BE REPRODUCED IN ANY MANNER EXCEPT ON ORDER OR WITH PRIOR WRITTEN AUTHORIZATION OF ATI.

DRAWN BY: M. GALA 12/17/19		TITLE	
CHECKED BY: B. FITZPATRICK 12/18/19		QC-7 TOOL CHANGER WITH SLOTTED TOOL DRAWING	
PROJECT # 190501-2	SHEET 2 OF 5	SCALE	REVISION
		2:1	04
		SIZE	DRAWING NUMBER
		B	9630-20-007CM 007ST

INTERFACE DIMENSIONS FOR DOCKING WITH 9120-TSS-MMS-11345

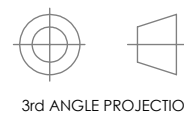


NOTES:

11. NOTED ITEMS SOLD SEPARATELY; SHOWN FOR REFERENCE ONLY. SEE TOOL STAND DRAWING 9630-20-TSS-MMS-11345 FOR ADDITIONAL DETAILS INCLUDING "TOOL IN NEST" SENSOR OPTIONS.

NOTES: UNLESS OTHERWISE SPECIFIED.

DO NOT SCALE DRAWING. ALL DIMENSIONS ARE IN MILLIMETERS.



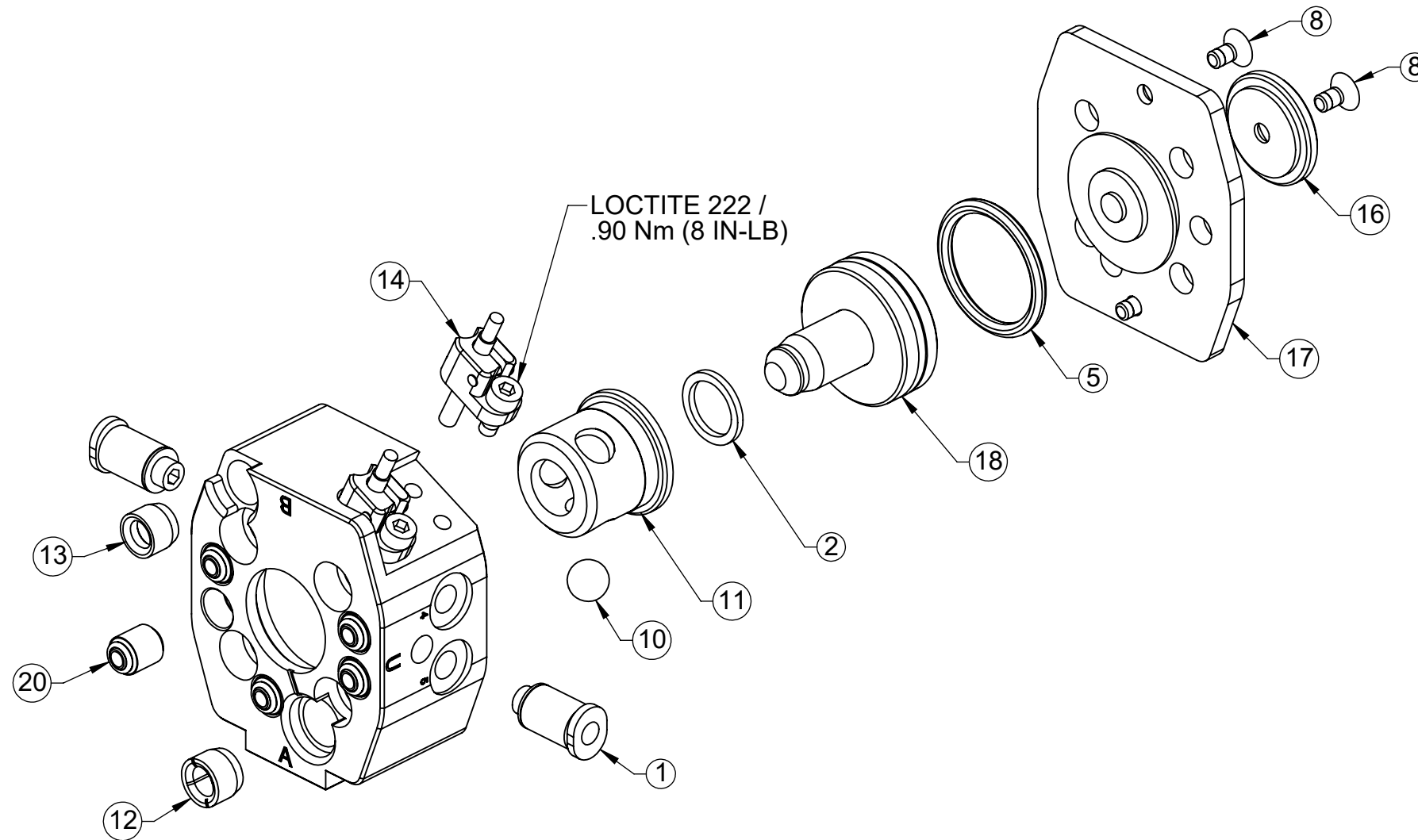
1031 Goodworth Drive, Apex, NC 27539, USA
 Tel: +1.919.772.0115 www.ati-ia.com
 Fax: +1.919.772.8259 ISO 9001 Registered Company

PROPERTY OF ATI INDUSTRIAL AUTOMATION, INC. NOT TO BE REPRODUCED IN ANY MANNER EXCEPT ON ORDER OR WITH PRIOR WRITTEN AUTHORIZATION OF ATI.

DRAWN BY: M. GALA 12/17/19		TITLE		
CHECKED BY: B. FITZPATRICK 12/18/19		QC-7 TOOL CHANGER WITH SLOTTED TOOL DRAWING		
PROJECT # 190501-2	SHEET 3 OF 5	SCALE	SIZE	DRAWING NUMBER
		1:1	B	9630-20-007CM 007ST
				REVISION
				04

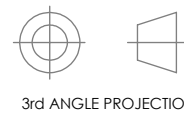
QC-7 MASTER

9120-007CM-0-0-SX



NOTES: UNLESS OTHERWISE SPECIFIED.

DO NOT SCALE DRAWING. ALL DIMENSIONS ARE IN MILLIMETERS.



1031 Goodworth Drive, Apex, NC 27539, USA
 Tel: +1.919.772.0115 www.ati-ia.com
 Fax: +1.919.772.8259 ISO 9001 Registered Company

PROPERTY OF ATI INDUSTRIAL AUTOMATION, INC. NOT TO BE REPRODUCED IN ANY MANNER EXCEPT ON ORDER OR WITH PRIOR WRITTEN AUTHORIZATION OF ATI.

DRAWN BY: M. GALA 12/17/19

CHECKED BY: B. FITZPATRICK 12/18/19

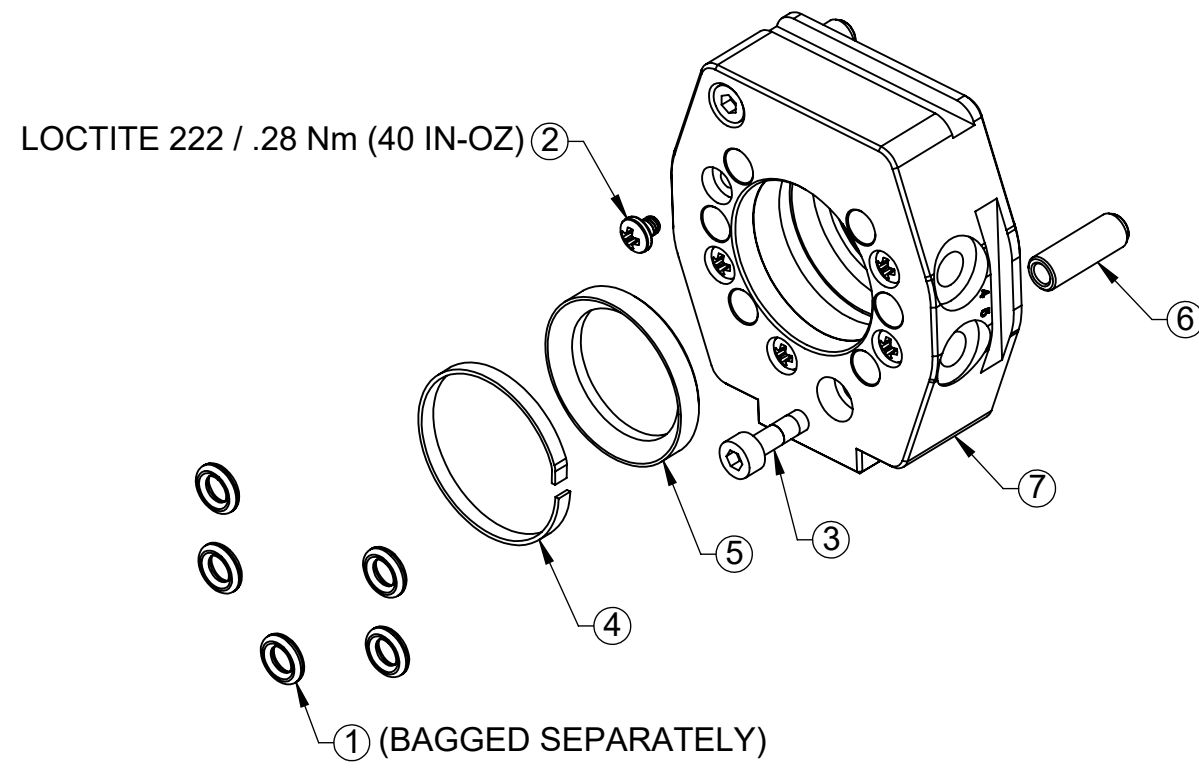
TITLE
QC-7 TOOL CHANGER WITH SLOTTED TOOL DRAWING

PROJECT # 190501-2 SHEET 4 OF 5

SCALE	SIZE	DRAWING NUMBER	REVISION
1:1	B	9630-20-007CM 007ST	04

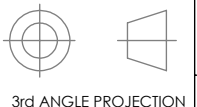
QC-7 SLOTTED TOOL

9120-007ST-0-0



NOTES: UNLESS OTHERWISE SPECIFIED.

DO NOT SCALE DRAWING. ALL DIMENSIONS ARE IN MILLIMETERS.



1031 Goodworth Drive, Apex, NC 27539, USA
 Tel: +1.919.772.0115 www.ati-ia.com
 Fax: +1.919.772.8259 ISO 9001 Registered Company

PROPERTY OF ATI INDUSTRIAL AUTOMATION, INC. NOT TO BE REPRODUCED IN ANY MANNER EXCEPT ON ORDER OR WITH PRIOR WRITTEN AUTHORIZATION OF ATI.

DRAWN BY: M. GALA 12/17/19		TITLE		
CHECKED BY: B. FITZPATRICK 12/18/19		QC-7 TOOL CHANGER WITH SLOTTED TOOL DRAWING		
PROJECT # 190501-2	SHEET 5 OF 5	SCALE	SIZE	DRAWING NUMBER
		1:1	B	9630-20-007CM 007ST
				REVISION
				04