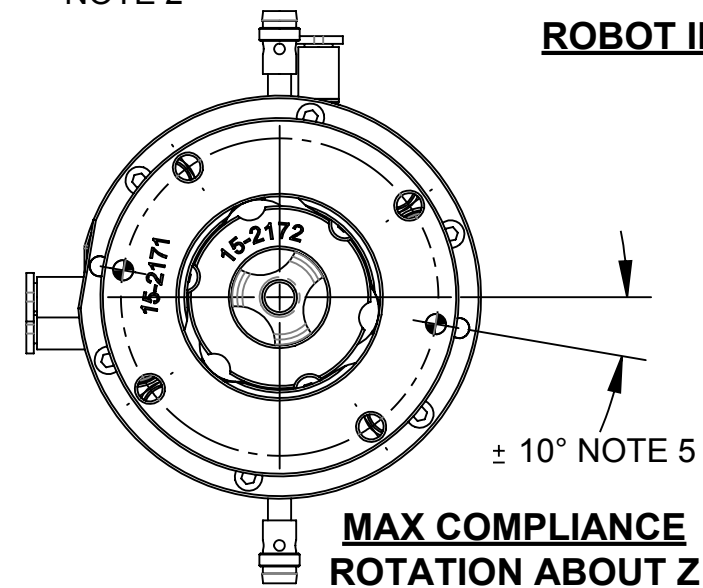
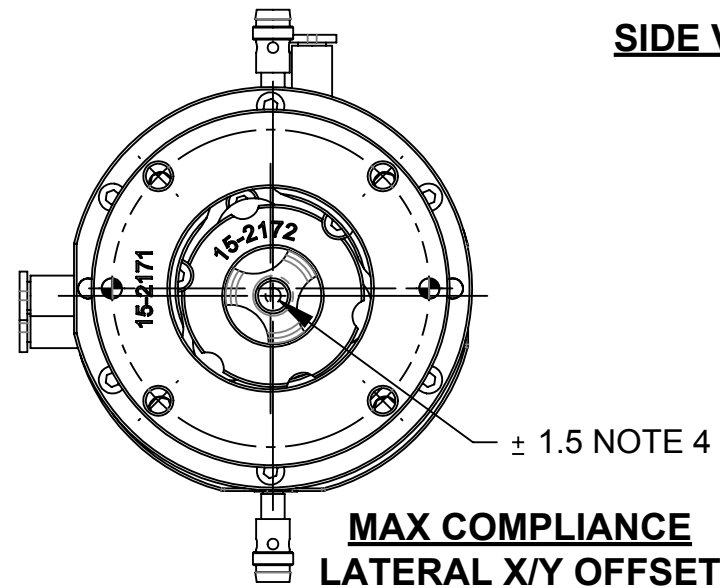
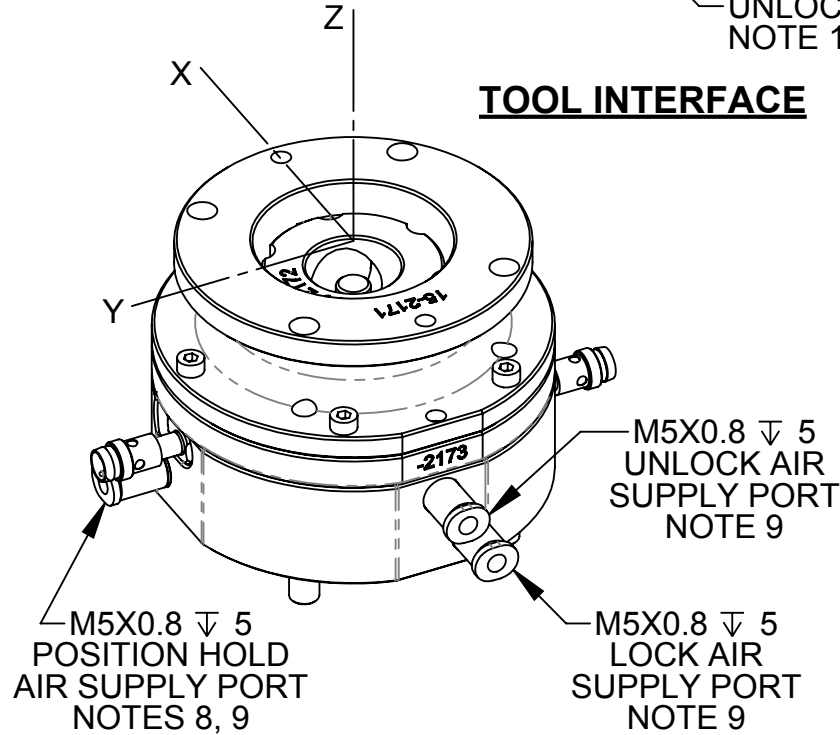
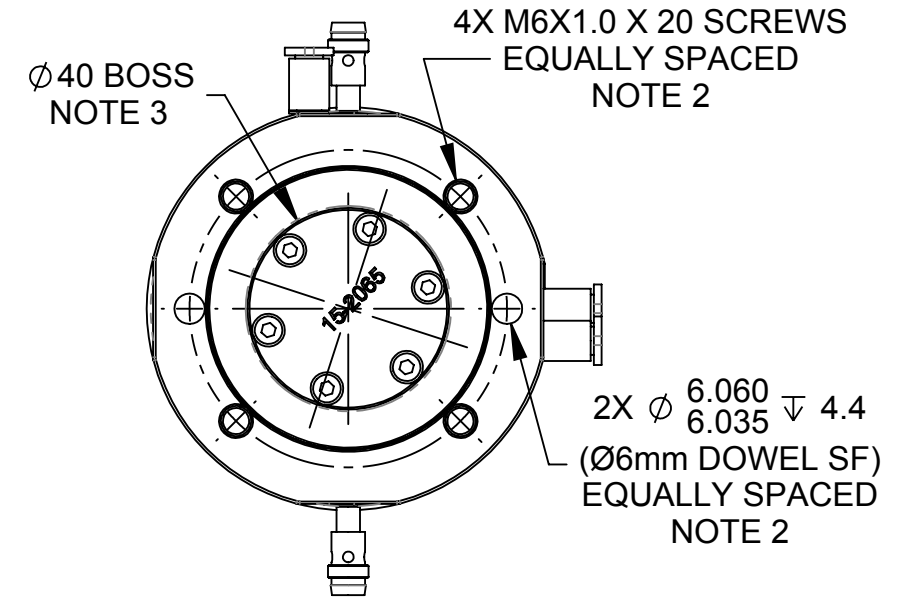
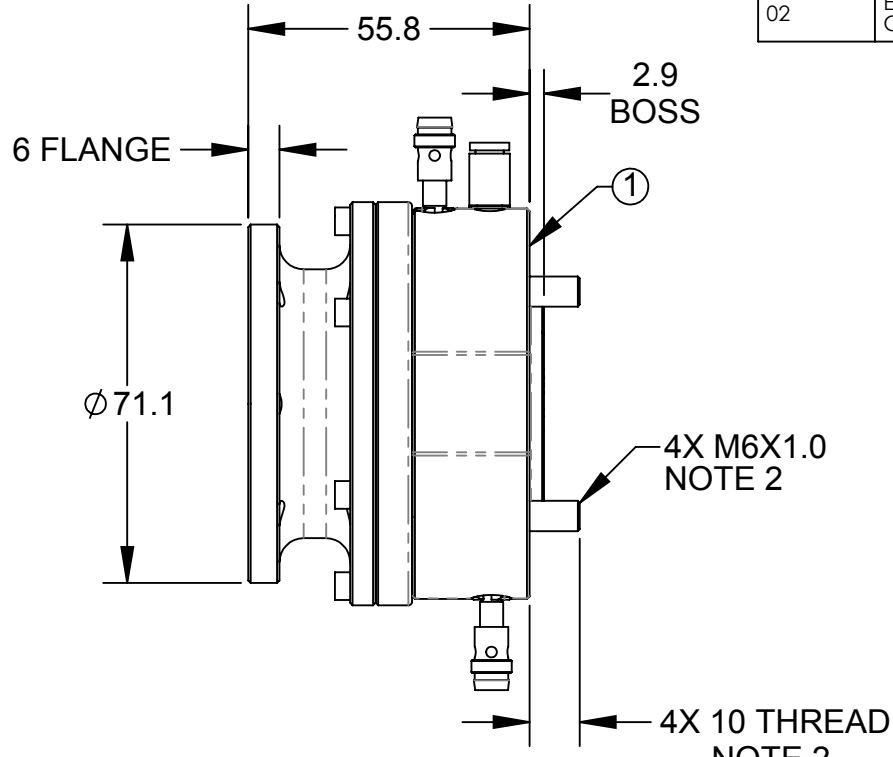
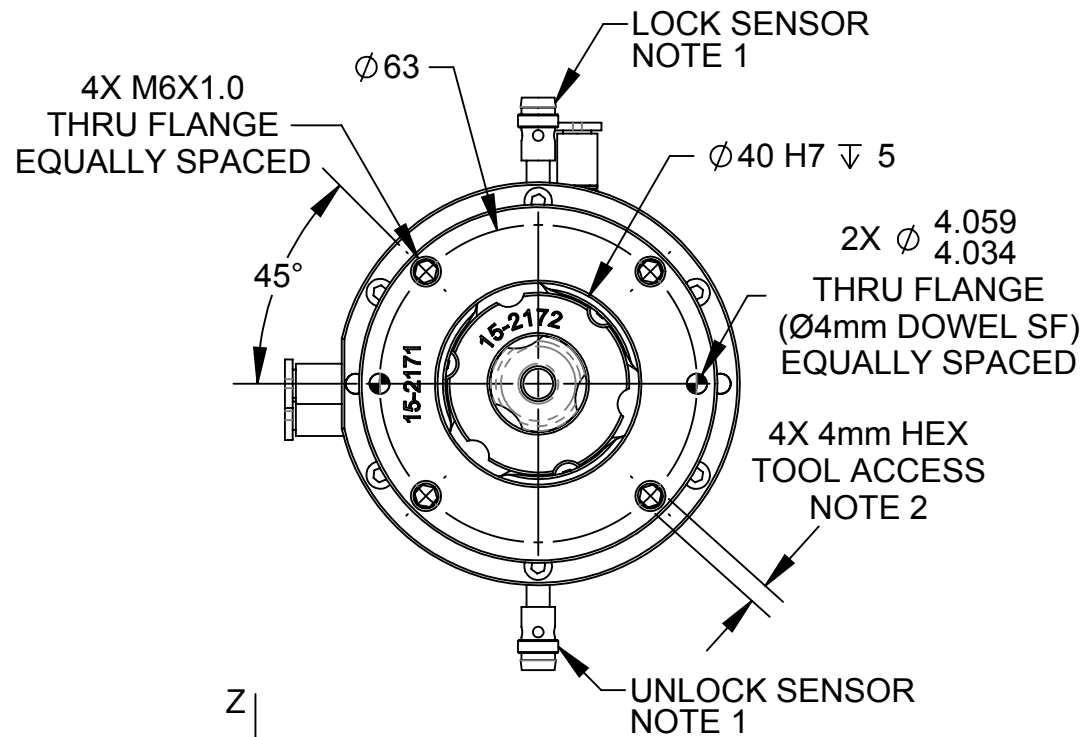


Rev.	Description	Initiator	Date
02	ECO 15576: 1.5 LATERAL COMPLIANCE WAS 2.6; 10 DEG ROTATION COMPLIANCE WAS 18; UPDATED NOTES & MODEL VIEWS	BVK	4/18/2017




NOTES:

1. CONFIGURED WITH OPTIONAL PNP LOCK & UNLOCK SENSORS WITH PICO M8 LED QUICK CONNECTORS. OTHER SENSOR OPTIONS AVAILABLE.
2. MOUNTING SCREWS FOR ROBOT INTERFACE ARE PROVIDED. DOWEL PINS ARE NOT PROVIDED. MOUNTING SCREWS ARE CLASS 8.8 LOW-HEAD SOCKET CAP SCREWS AND REMAIN CAPTIVE IN THE ASSEMBLY. ACCESS WITH 4mm HEX TOOL THROUGH TAPPED HOLES ON TOOL PLATE INTERFACE.
3. OPTIONAL BOSS PLATES AVAILABLE.
4. MAX LATERAL XY COMPLIANCE = \pm 1.5 mm (0.060")
5. MAX Z ROTATIONAL COMPLIANCE = \pm 10°
6. APPROXIMATE MASS = 0.90 KG (2.00 LBS)
7. SEE PRODUCT MANUAL FOR PAYLOAD SPECIFICATIONS & RATINGS
8. UNIT EQUIPPED WITH OPTIONAL POSITION HOLD FEATURE.
9. PRE-INSTALLED PUSH FITTING FOR Ø4mm OD TUBING.

ITEM NO.	QTY.	PART NUMBER	DESCRIPTION
1	1	9117-L1J-063-SG-M-2070-H	Lateral Compliance Compensator, 63mm BC, 40mm Boss, L, UL PNP Quick Connect Sensor, Position Hold, M5 Ports

NOTES: UNLESS OTHERWISE SPECIFIED.

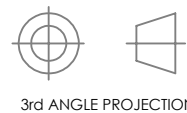
DO NOT SCALE DRAWING. ALL DIMENSIONS ARE IN MILLIMETERS.



1031 Goodworth Drive, Apex, NC 27539, USA
Tel: +1.919.772.0115 Email: info@ati-ia.com
Fax: +1.919.772.8259 www.ati-ia.com
ISO 9001 Registered Company

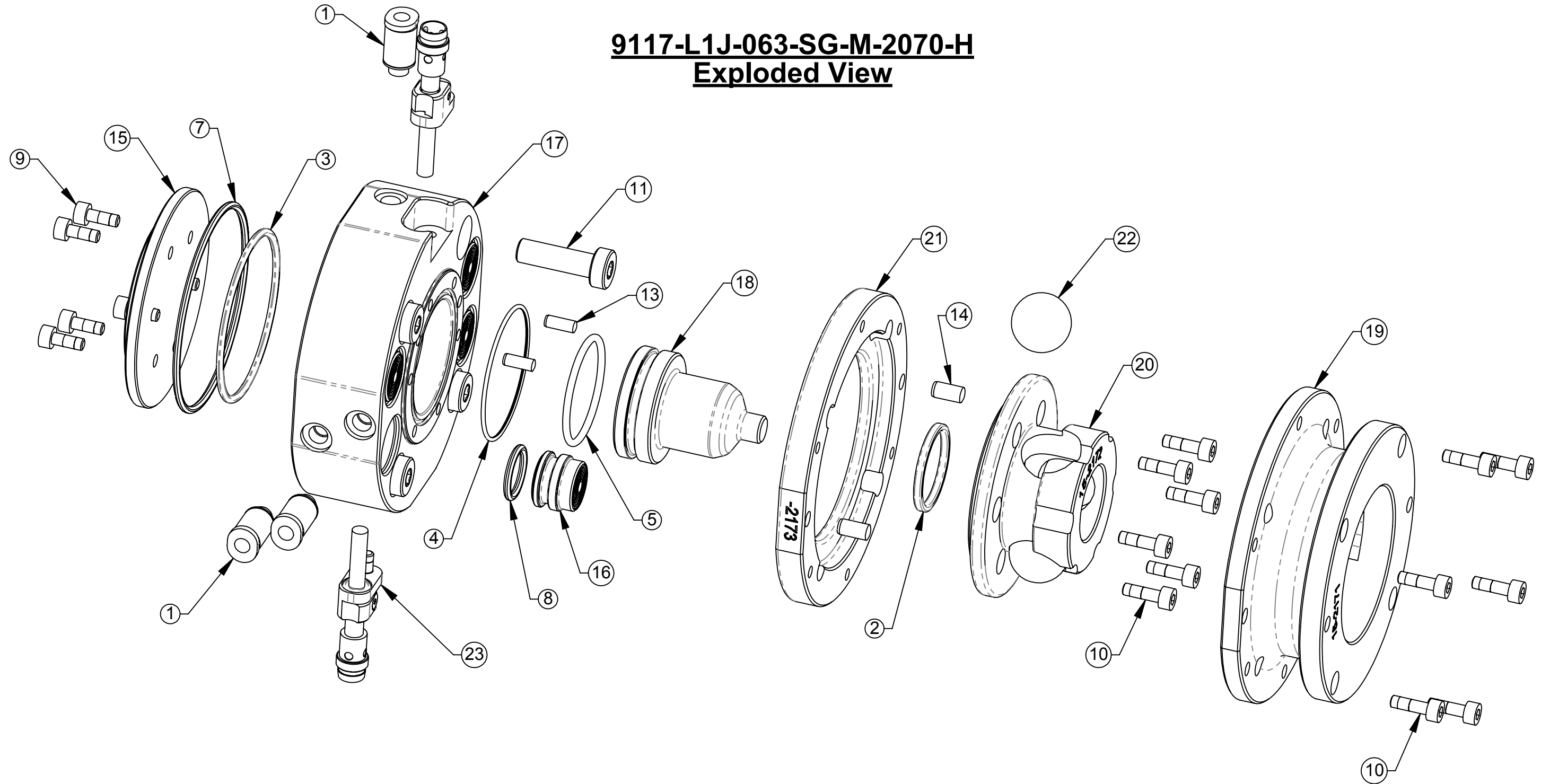
PROPERTY OF ATI INDUSTRIAL AUTOMATION, INC. NOT TO BE REPRODUCED IN ANY MANNER EXCEPT ON ORDER OR WITH PRIOR WRITTEN AUTHORIZATION OF ATI.

DRAWN BY: D. Wooden 04/23/15		TITLE	
CHECKED BY: KRZ 4/23/15		Lateral Compliance Compensator, 63mm BC, 40mm Boss, L, UL PNP Quick Connect Sensor, Position Hold, M5 Ports	
PROJECT # 110823-1	SHEET 1 OF 2	SCALE 2:3	REVISION 02



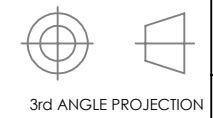
REV.	DESCRIPTION	INITIATOR	DATE
-	See Sheet1	-	-

9117-L1J-063-SG-M-2070-H Exploded View



NOTES: UNLESS OTHERWISE SPECIFIED.

DO NOT SCALE DRAWING. ALL DIMENSIONS ARE IN MILLIMETERS.



1031 Goodworth Drive, Apex, NC 27539, USA
 Tel: +1.919.772.0115 Email: info@ati-ia.com
 Fax: +1.919.772.8259 www.ati-ia.com
 ISO 9001 Registered Company

PROPERTY OF ATI INDUSTRIAL AUTOMATION, INC. NOT TO BE REPRODUCED IN ANY MANNER EXCEPT ON ORDER OR WITH PRIOR WRITTEN AUTHORIZATION OF ATI.

DRAWN BY: D. Wooden 04/23/15		TITLE	
CHECKED BY: KRZ 4/23/15		Lateral Compliance Compensator, 63mm BC, 40mm Boss, L, UL PNP Quick Connect Sensor, Position Hold, M5 Ports	
PROJECT # 110823-1	SHEET 2 OF 2	SCALE 1:1	SIZE B
		DRAWING NUMBER 9630-15-L1J-063-2070	REVISION 02