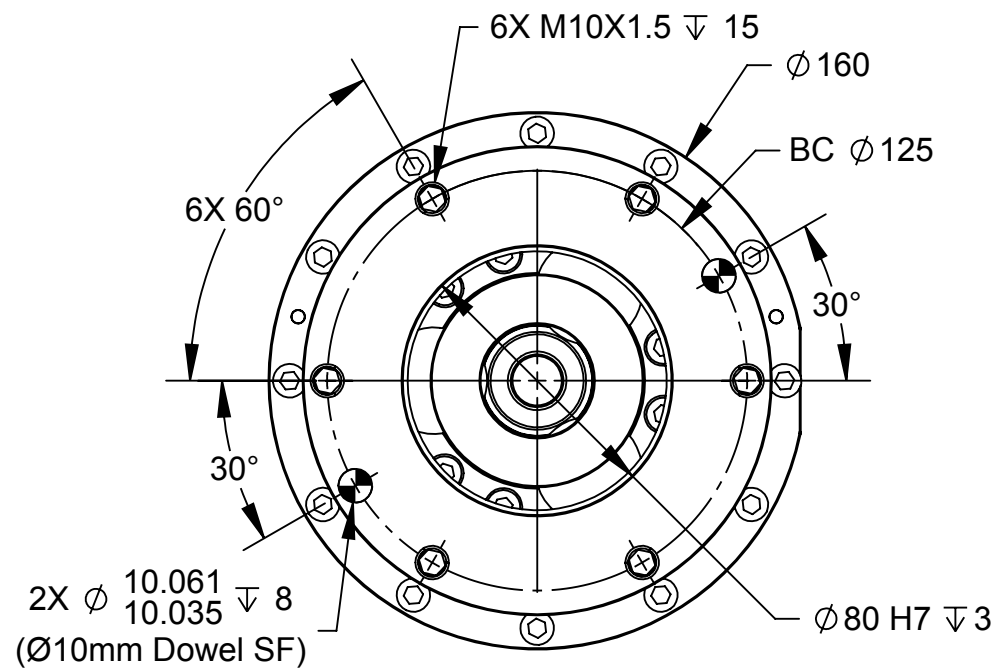
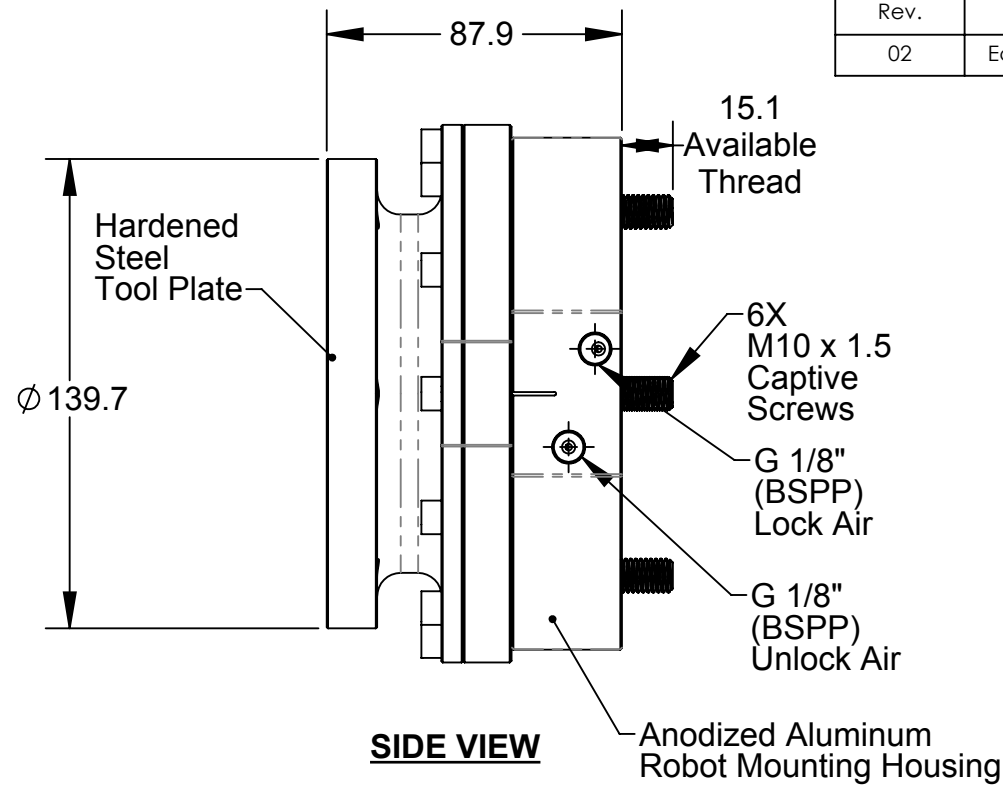


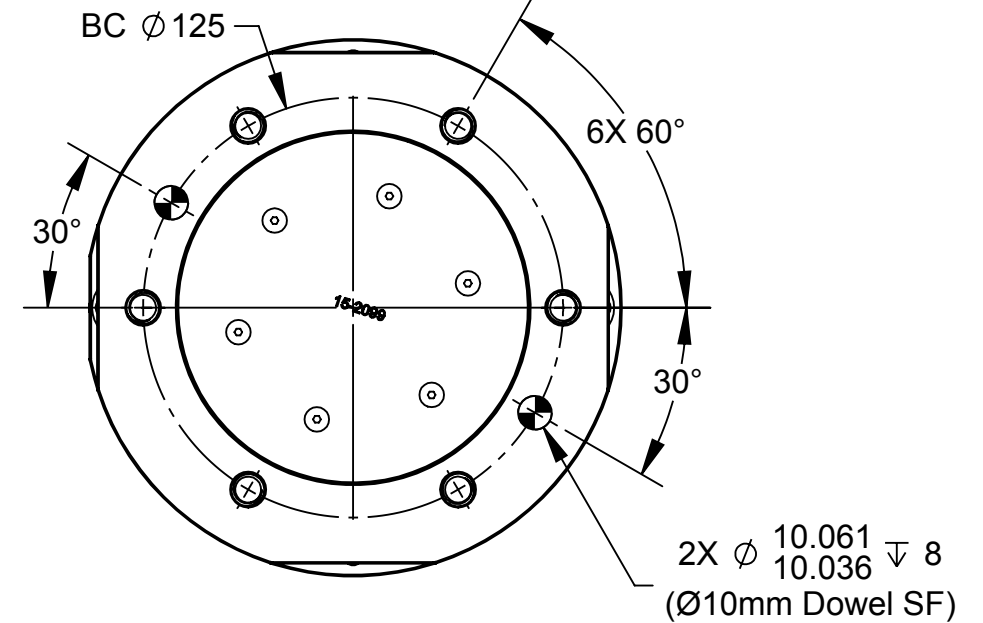
Rev.	Description	Initiator	Date
02	Eco 15745; Lateral offset was 6mm, updated note 3	LJH	6/13/17



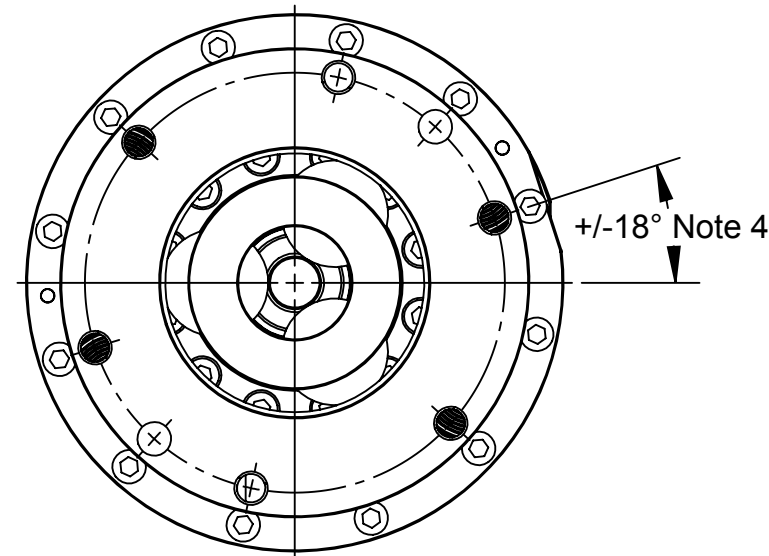
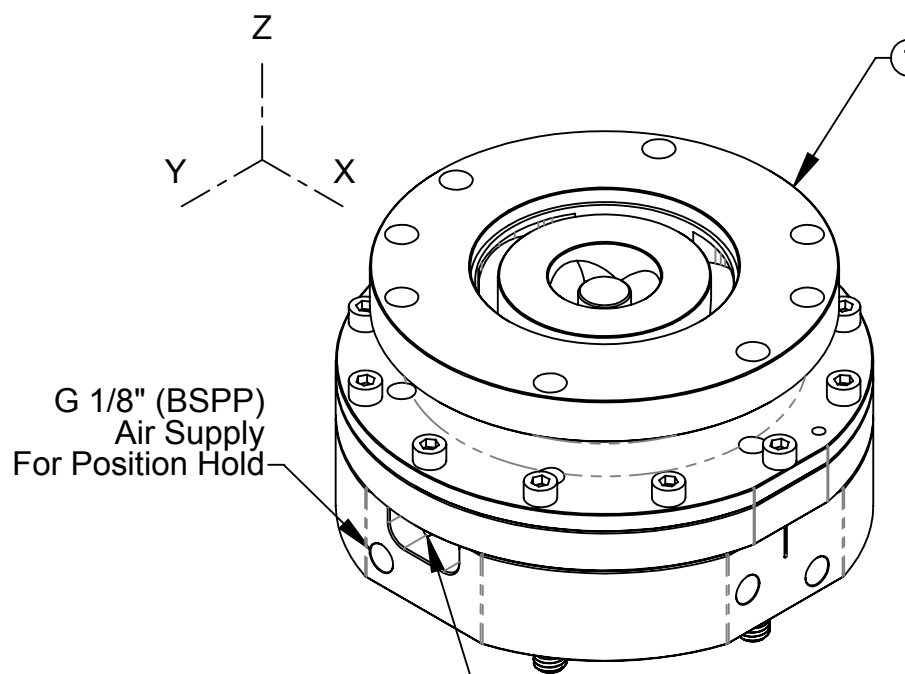
TOOL MOUNTING VIEW



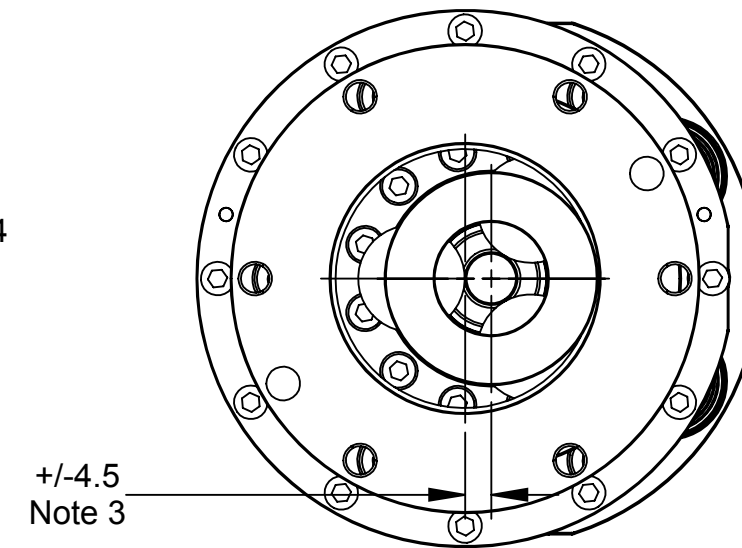
SIDE VIEW



ROBOT MOUNTING VIEW



MAX Z COMPLIANCE TOOL MOUNTING VIEW



MAX X-Y COMPLIANCE TOOL MOUNTING VIEW

- Notes:
- Design is subject to change
 - Estimated mass = 13.00 lbs / 5.8kg
 - Max Lateral Offset = .175 in / 4.5mm
 - Max Angular Offset = 18°
 - Materials of Construction: Anodized Aluminum and Chrome Plated Steel

ITEM NO.	QTY.	PART NUMBER	DESCRIPTION
1	1	9117-L1A-125-SG-E-2100-H	Lateral Compliance Compensator, 125mm BC, L, UL PNP N.O. Sensor Quick Connect, Position Hold, 1/8" BSPP Ports

NOTES: UNLESS OTHERWISE SPECIFIED.

DO NOT SCALE DRAWING. ALL DIMENSIONS ARE IN MILLIMETERS.



1031 Goodworth Drive, Apex, NC 27539, USA
 Tel: +1.919.772.0115 Email: info@ati-ia.com
 Fax: +1.919.772.8259 www.ati-ia.com
 ISO 9001 Registered Company

PROPERTY OF ATI INDUSTRIAL AUTOMATION, INC. NOT TO BE REPRODUCED IN ANY MANNER EXCEPT ON ORDER OR WITH PRIOR WRITTEN AUTHORIZATION OF ATI.

DRAWN BY: D. Wooden 01/26/2015

CHECKED BY: KRZ 01/27/2015

TITLE
 Lateral Compliance Compensator, 125mm BC, L, UL PNP N.O. Sensor Quick Connect, Position Hold, 1/8" BSPP Ports



3rd ANGLE PROJECTION

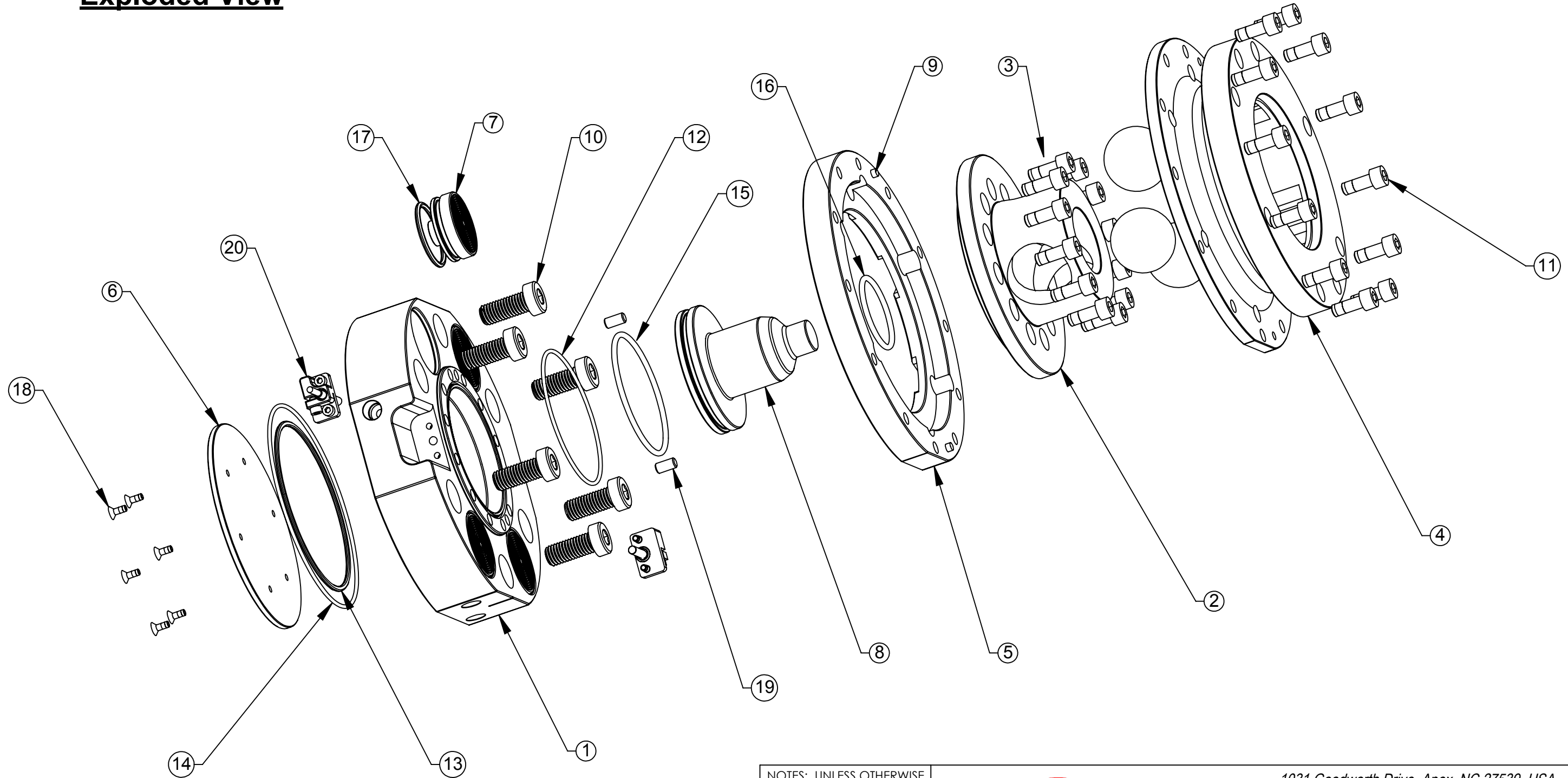
PROJECT # 140718-2 SHEET 1 OF 2

SCALE	SIZE	DRAWING NUMBER	REVISION
1:2	B	9630-15-L1A-125-2100	02

Rev.	Description	Initiator	Date
-	See Sheet1	-	-

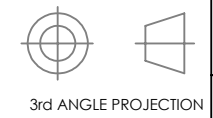
9117-L1A-125-SG-E-2100


Exploded View



NOTES: UNLESS OTHERWISE SPECIFIED.

DO NOT SCALE DRAWING. ALL DIMENSIONS ARE IN MILLIMETERS.





1031 Goodworth Drive, Apex, NC 27539, USA
 Tel: +1.919.772.0115 Email: info@ati-ia.com
 Fax: +1.919.772.8259 www.ati-ia.com
 ISO 9001 Registered Company

PROPERTY OF ATI INDUSTRIAL AUTOMATION, INC. NOT TO BE REPRODUCED IN ANY MANNER EXCEPT ON ORDER OR WITH PRIOR WRITTEN AUTHORIZATION OF ATI.

DRAWN BY: D. Wooden 01/26/2015		TITLE	
CHECKED BY: KRZ 01/27/2015		Lateral Compliance Compensator, 125mm BC, L, UL PNP N.O. Sensor Quick Connect, Position Hold, 1/8" BSPP Ports	
PROJECT # 140718-2	SHEET 2 OF 2	SCALE 1:2	REVISION 02
		SIZE B	DRAWING NUMBER 9630-15-L1A-125-2100