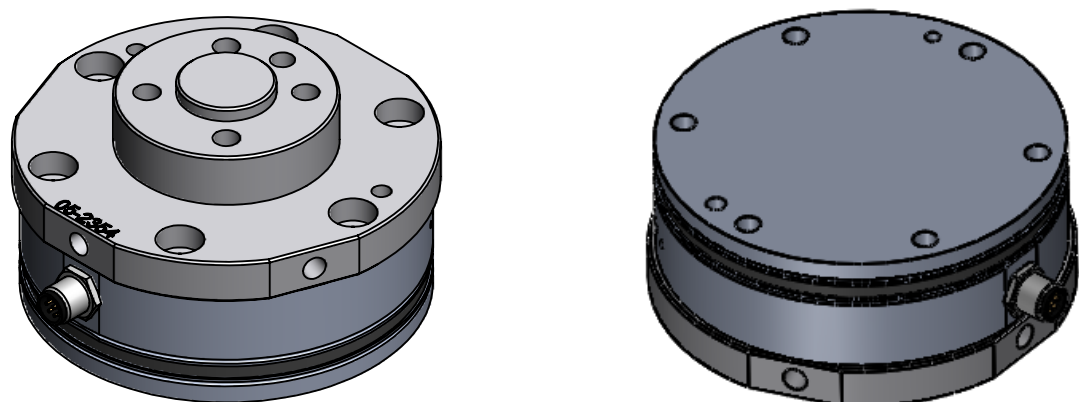
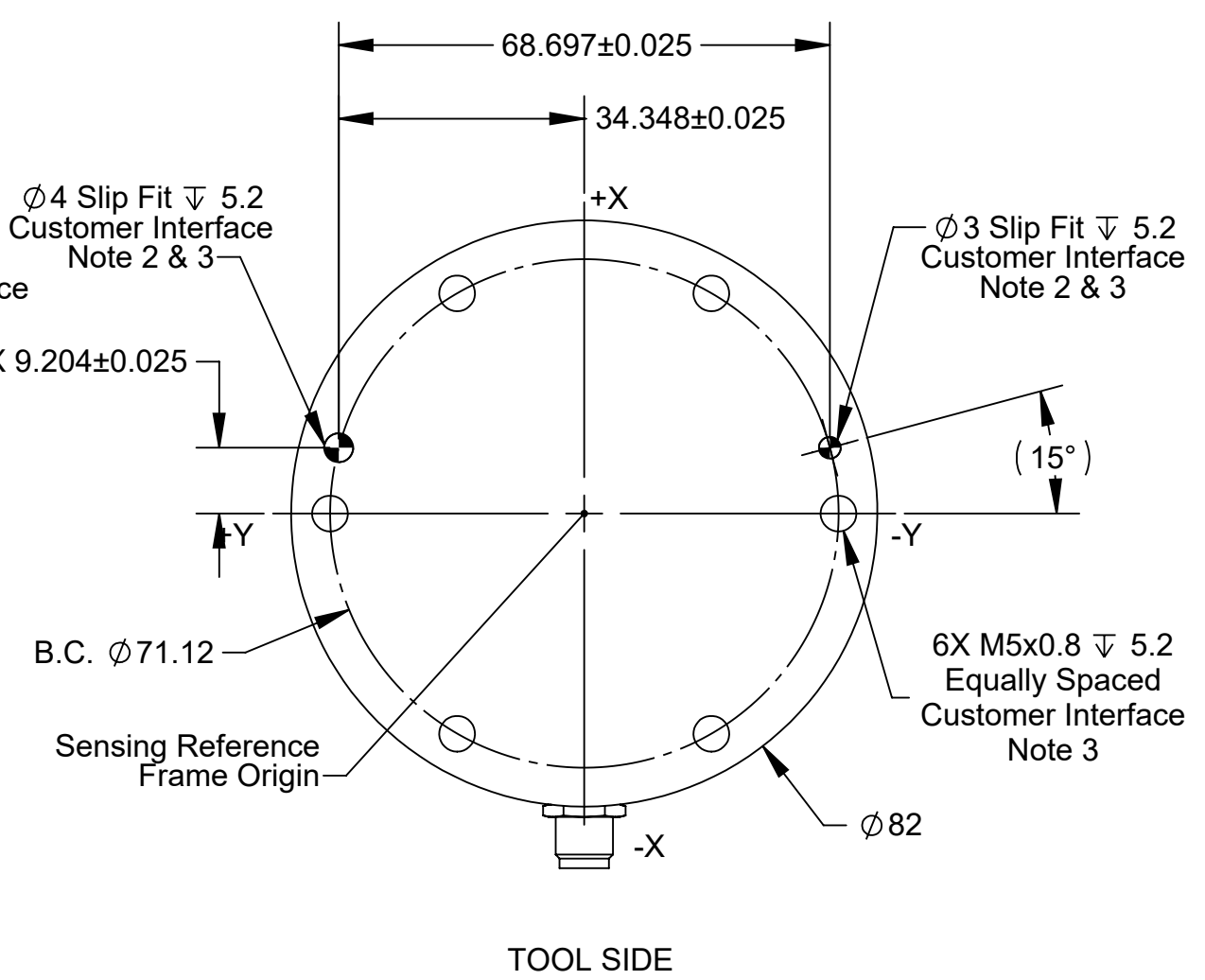
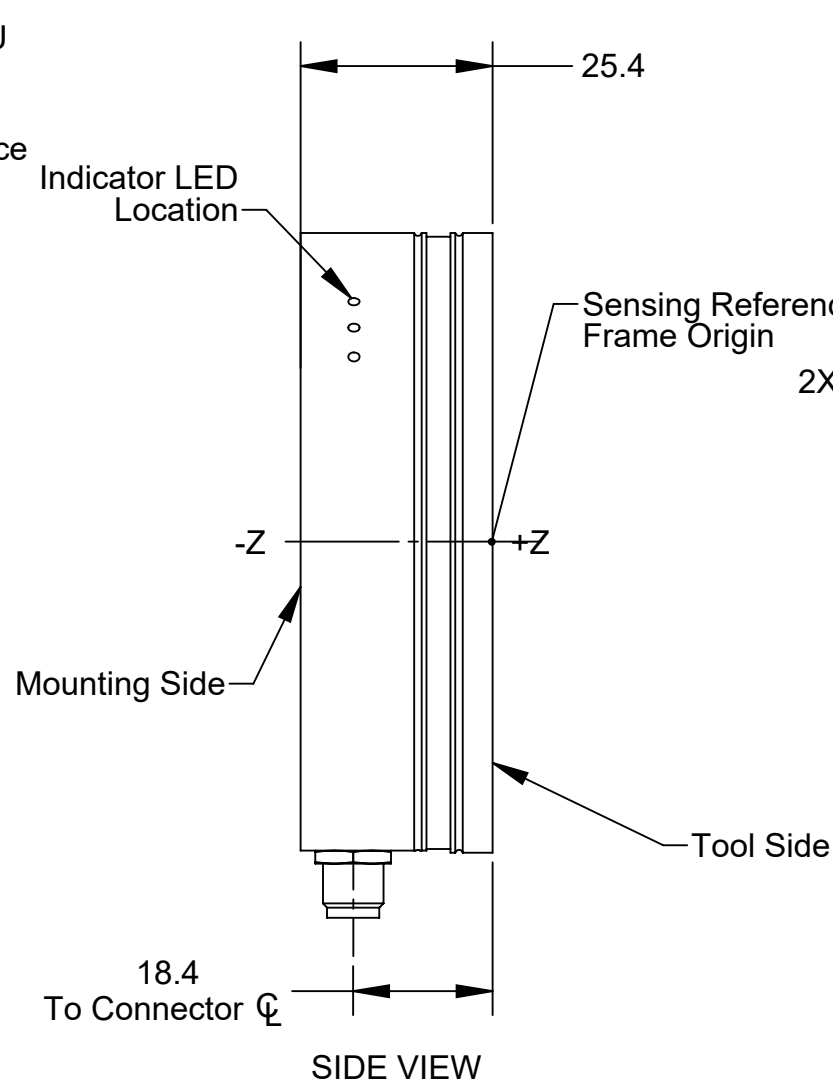
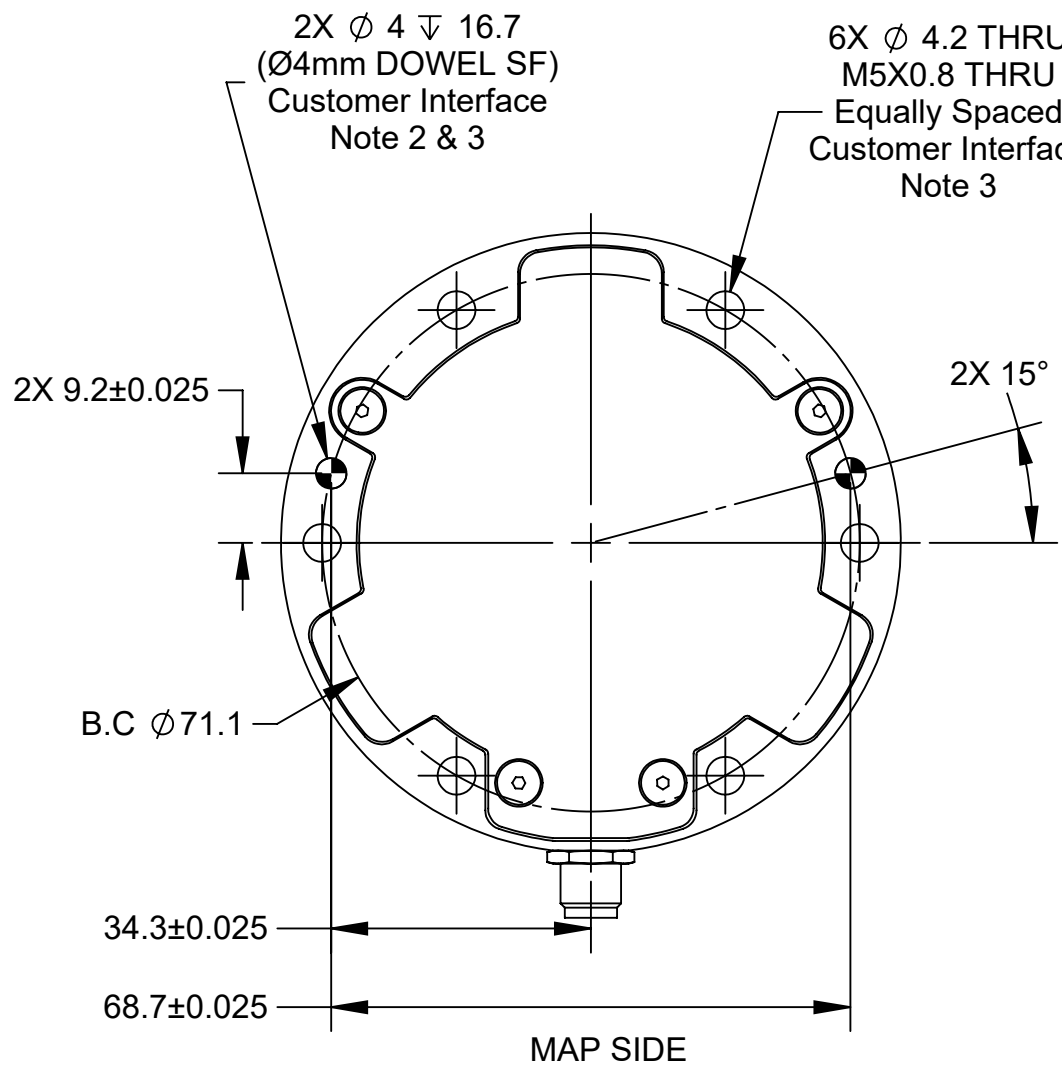


REV.	DESCRIPTION	INITIATOR	DATE
01	Production Release	VV	6/10/2023

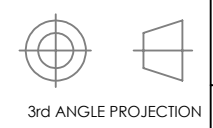


9105-IP-2354 shown as an example;  
Not all kits will include this Interface Plate Kit

- Notes:
- Do not touch internal electronics or instrumentation. This could damage transducer and void the warranty.
  - Do not exceed interface depth. Doing so may cause damage and/or incorrect readings.
  - Refer 9230-05-1543 for a fully defined mounting interface drawing.

NOTES: UNLESS OTHERWISE SPECIFIED.

DO NOT SCALE DRAWING. ALL DIMENSIONS ARE IN MILLIMETERS.



1031 Goodworth Drive, Apex, NC 27539, USA  
Tel: +1.919.772.0115 www.ati-ia.com  
Fax: +1.919.772.8259 ISO 9001 Registered Company

PROPERTY OF ATI INDUSTRIAL AUTOMATION, INC. NOT TO BE REPRODUCED IN ANY MANNER EXCEPT ON ORDER OR WITH PRIOR WRITTEN AUTHORIZATION OF ATI.

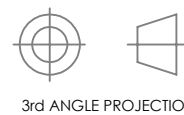
DRAWN BY: V.Vavilikolane, 6/6/2023		TITLE	
CHECKED BY: N.Damiano, 6/12/2023		Customer Drawing For Fanuc Kit Axia80	
SCALE	SIZE	DRAWING NUMBER	REVISION
1:1	B	9630-05-0033	01
PROJECT # 200603-3		SHEET 1 OF 3	

Axia80-M8 F/T Sensor					Axia80-M20 F/T Sensor					Axia80-M50 F/T Sensor				
<b>Loading Characteristics</b>	<b>Fxy</b>	<b>Fz</b>	<b>Txy</b>	<b>Tz</b>	<b>Loading Characteristics</b>	<b>Fxy</b>	<b>Fz</b>	<b>Txy</b>	<b>Tz</b>	<b>Loading Characteristics</b>	<b>Fxy</b>	<b>Fz</b>	<b>Txy</b>	<b>Tz</b>
Rated Range	± 150 N	± 470 N	± 8 Nm	± 8 Nm	Rated Range	± 500 N	± 900 N	± 20 Nm	± 20 Nm	Rated Range	± 1200 N	± 2000 N	± 50 Nm	± 50 Nm
Overload Rating	± 750 N	± 2300 N	± 40 Nm	± 40 Nm	Overload Rating	± 2500 N	± 4500 N	± 100 Nm	± 100 Nm	Overload Rating	± 6000 N	± 10000 N	± 250 Nm	± 250 Nm
Effective Resolution	0.04 N	0.04 N	0.002 Nm	0.002 Nm	Effective Resolution	0.1 N	0.1 N	0.005 Nm	0.005 Nm	Effective Resolution	0.4 N	0.4 N	0.01	0.01
<b>Stiffness (Calculated)</b>					<b>Stiffness (Calculated)</b>					<b>Stiffness (Calculated)</b>				
X-Axis & Y-Axis Forces (Kx, Ky)	1.1x10 <sup>7</sup> N/m				X-Axis & Y-Axis Forces (Kx, Ky)	2.7x10 <sup>7</sup> N/m				X-Axis & Y-Axis Forces (Kx, Ky)	8.8x10 <sup>7</sup> N/m			
Z-Axis Force (Kz)	2.0x10 <sup>7</sup> N/m				Z-Axis Force (Kz)	4.1x10 <sup>7</sup> N/m				Z-Axis Force (Kz)	1.2x10 <sup>8</sup> N/m			
X-Axis & Y-Axis Torques (Ktx, Kty)	1.1x10 <sup>4</sup> Nm/rad				X-Axis & Y-Axis Torques (Ktx, Kty)	2.4x10 <sup>4</sup> Nm/rad				X-Axis & Y-Axis Torques (Ktx, Kty)	6.5x10 <sup>4</sup> Nm/rad			
Z-Axis Torque (Ktz)	2.3x10 <sup>4</sup> Nm/rad				Z-Axis Torque (Ktz)	4.8x10 <sup>4</sup> Nm/rad				Z-Axis Torque (Ktz)	6.5x10 <sup>4</sup> Nm/rad			
<b>Resonant Frequency (Sensor Only)</b>					<b>Resonant Frequency (Sensor Only)</b>					<b>Resonant Frequency (Sensor Only)</b>				
Fx, Fy, Tz	1500 Hz				Fx, Fy, Tz	2200 Hz				Fx, Fy, Tz	2500 Hz			
Fz, Tx, Ty	1500 Hz				Fz, Tx, Ty	2600 Hz				Fz, Tx, Ty	2500 Hz			
<b>Physical Specifications (Sensor Only)</b>					<b>Physical Specifications (Sensor Only)</b>					<b>Physical Specifications (Sensor Only)</b>				
Center of Mass*	X = -0.01mm	Y = 0.46mm	Z = -12.17mm		Center of Mass*	X = 0.50mm	Y = 0.3mm	Z = -12.31mm		Center of Mass*	X = -0.02mm	Y = 0.69mm	Z = -11.11mm	
Material	Aluminum				Material	Aluminum				Material	Stainless Steel			
Weight	0.28 kg				Weight	0.3kg				Weight	0.68 kg			

Operational Specifications (All Sensor Models)	
Communication	RS422
Supply Voltage	12-30V DC
Maximum Power Consumption	1.7W
System Resolution	16 Bit
Max Data Rate	4kHz
Operating Temperature	0-65°C
IP Rating	IP64

NOTES: UNLESS OTHERWISE SPECIFIED.

DO NOT SCALE DRAWING. ALL DIMENSIONS ARE IN MILLIMETERS.



3rd ANGLE PROJECTION



1031 Goodworth Drive, Apex, NC 27539, USA  
 Tel: +1.919.772.0115 www.ati-ia.com  
 Fax: +1.919.772.8259 ISO 9001 Registered Company

PROPERTY OF ATI INDUSTRIAL AUTOMATION, INC. NOT TO BE REPRODUCED IN ANY MANNER EXCEPT ON ORDER OR WITH PRIOR WRITTEN AUTHORIZATION OF ATI.

DRAWN BY: V.Vavilikolane, 6/6/2023

CHECKED BY: N.Damiano, 6/12/2023

TITLE

Customer Drawing For Fanuc Kit Axia80

PROJECT # 200603-3 SHEET 2 OF 3

SCALE  
1:1

SIZE  
B

DRAWING NUMBER  
9630-05-0033

REVISION  
01

\*Measurements taken from Sensing Reference Frame Origin

	Name	Interface Plate # / Two Plate Kit	Boss Size mm (d X h)	Recess Size mm (d X h)	Robot Bolt Circle mm	Robot Fastener	Robot Fastener Torque Nm	Sensor Frame Z+ Offset mm	Material
Axia80-M8	9105-FTKIT-FANUC-BC31.5-AXIA80-M8	9105-IP-2387 / N	20 X 3	-	31.5	7X M5	6	46.4	Aluminum
	9105-FTKIT-FANUC-BC40-AXIA80-M8	9105-IP-2444 / N	25 X 3	-	40	7X M6	10	46.4	Aluminum
	9105-FTKIT-FANUC-BC50-AXIA80-M8	9105-IP-2355 / N	31.5 X 3	-	50	7X M6	10	46.4	Aluminum
	9105-FTKIT-FANUC-BC56-AXIA80-M8	9105-IP-2495 / Y	-	62 X 2	56	14X M4	3	59.4	Aluminum
	9105-FTKIT-FANUC-BC64-AXIA80-M8	9105-IP-2369 / Y	-	71 X 2	64	14X M4	3	59.4	Aluminum
Axia80-M20	9105-FTKIT-FANUC-BC31.5-AXIA80-M20	9105-IP-2387 / N	20 X 3	-	31.5	7X M5	6	46.4	Aluminum
	9105-FTKIT-FANUC-BC40-AXIA80-M20	9105-IP-2444 / N	25 X 3	-	40	7X M6	10	46.4	Aluminum
	9105-FTKIT-FANUC-BC50-AXIA80-M20	9105-IP-2355 / N	31.5 X 3	-	50	7X M6	10	46.4	Aluminum
	9105-FTKIT-FANUC-BC56-AXIA80-M20	9105-IP-2495 / Y	-	62 X 2	56	14X M4	3	59.4	Aluminum
	9105-FTKIT-FANUC-BC64-AXIA80-M20	9105-IP-2369 / Y	-	71 X 2	64	14X M4	3	59.4	Aluminum
Axia80-M50	9105-FTKIT-FANUC-BC31.5-AXIA80-M50	9105-IP-2388 / N	20 X 3	-	31.5	7X M5	6	46.4	Stainless Steel
	9105-FTKIT-FANUC-BC40-AXIA80-M50	9105-IP-2371 / N	25 X 3	-	40	7X M6	10	46.4	Stainless Steel
	9105-FTKIT-FANUC-BC56-AXIA80-M50	9105-IP-2496 / Y	-	62 X 2	56	14X M4	3	59.4	Stainless Steel
	9105-FTKIT-FANUC-BC64-AXIA80-M50	9105-IP-2380 / Y	-	71 X 2	64	14X M4	3	59.4	Stainless Steel

Notes:

4. All kits will come with 6X M5 Sensor Fasteners. These should be torqued to 6Nm.
5. All two plate kits come with an additional IP kit.
6. The two plate kits will include an additional 7X M5 Fasteners. These should be torqued to 6Nm.

NOTES: UNLESS OTHERWISE SPECIFIED.

DO NOT SCALE DRAWING. ALL DIMENSIONS ARE IN MILLIMETERS.



3rd ANGLE PROJECTION



1031 Goodworth Drive, Apex, NC 27539, USA  
 Tel: +1.919.772.0115 www.ati-ia.com  
 Fax: +1.919.772.8259 ISO 9001 Registered Company

PROPERTY OF ATI INDUSTRIAL AUTOMATION, INC. NOT TO BE REPRODUCED IN ANY MANNER EXCEPT ON ORDER OR WITH PRIOR WRITTEN AUTHORIZATION OF ATI.

DRAWN BY: V.Vavilikolane, 6/6/2023		TITLE		
CHECKED BY: N.Damiano, 6/12/2023		Customer Drawing For Fanuc Kit Axia80		
PROJECT #	SHEET	SCALE	SIZE	DRAWING NUMBER
200603-3	3 OF 3	1:1	B	9630-05-0033
				REVISION
				01