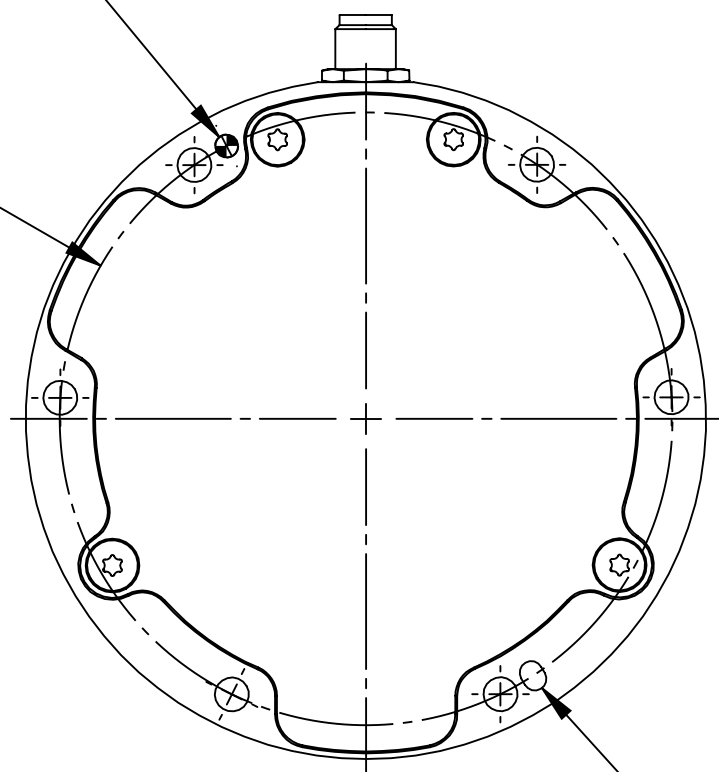


REV.	DESCRIPTION	INITIATOR	DATE
01	Production Release	VV	06/08/2023

$\phi$  3.058  
 $\phi$  3.033  $\nabla$  7.5  
 (Ø3mm DOWEL SF)  
 Customer Interface  
 Note 2 & 3

B.C Ø81.1



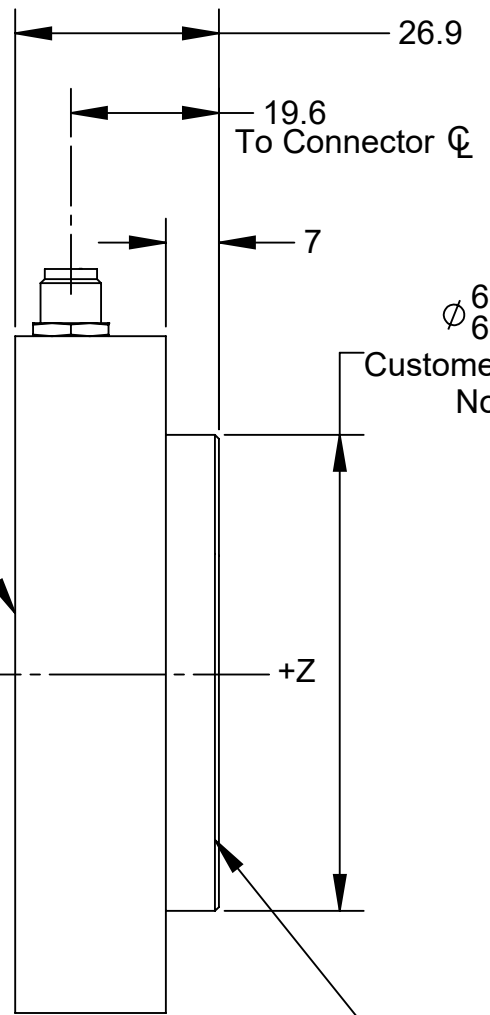
MAP VIEW

$\phi$  6 Slip Fit Slot  $\nabla$  7.5  
 Customer Interface  
 Note 2 & 3

Mounting Side

-Z

SIDE VIEW



$\phi$  62.975  
 $\phi$  62.950  
 Customer Interface  
 Note 3

Tool Side

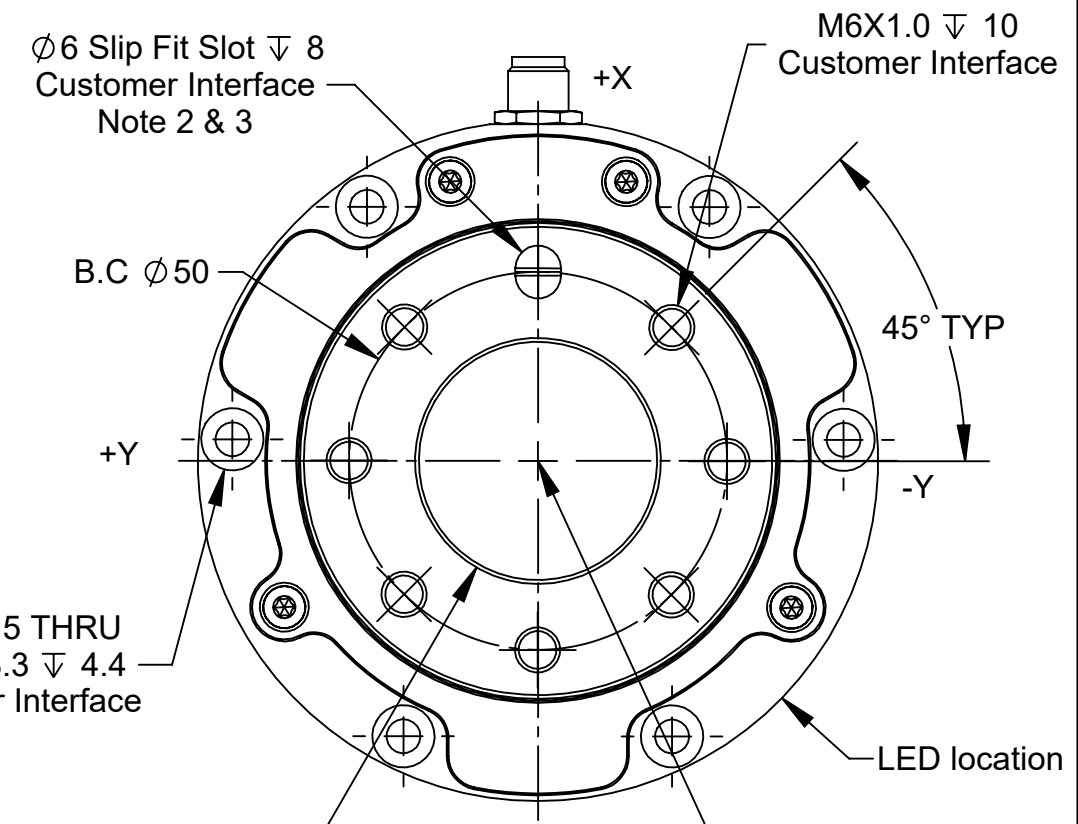
6X  $\phi$  4.5 THRU  
 $\phi$  8.3  $\nabla$  4.4  
 Customer Interface

$\phi$  6 Slip Fit Slot  $\nabla$  8  
 Customer Interface  
 Note 2 & 3

B.C Ø50

$\phi$  32.550  $\nabla$  6  
 $\phi$  32.525  
 Customer Interface

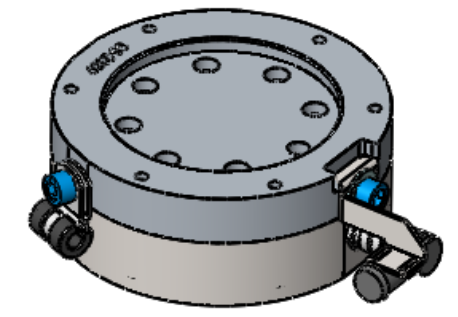
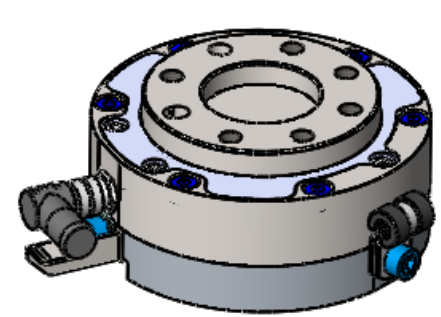
TOOL SIDE



M6X1.0  $\nabla$  10  
 Customer Interface

LED location

Sensing Reference Frame Origin



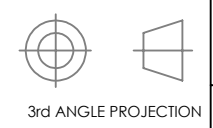
9105-IP-2359 shown as an example;  
 Not all kits will include this Interface Plate Kit

Notes:

1. Do not touch internal electronics or instrumentation. This could damage the transducer and void the warranty
2. Do not exceed interface depth. Doing so may cause damage and/or incorrect readings
3. Refer 9630-05-0007 for a fully defined mounting interface drawing.

NOTES: UNLESS OTHERWISE SPECIFIED.

DO NOT SCALE DRAWING. ALL DIMENSIONS ARE IN MILLIMETERS.



1031 Goodworth Drive, Apex, NC 27539, USA  
 Tel: +1.919.772.0115 www.ati-ia.com  
 Fax: +1.919.772.8259 ISO 9001 Registered Company

PROPERTY OF ATI INDUSTRIAL AUTOMATION, INC. NOT TO BE REPRODUCED IN ANY MANNER EXCEPT ON ORDER OR WITH PRIOR WRITTEN AUTHORIZATION OF ATI.

DRAWN BY: V.Vavilikolane, 06/01/2023

CHECKED BY: N.Damiano, 6/8/2023

PROJECT # 210712-1 SHEET 1 OF 2

TITLE		SCALE		SIZE	DRAWING NUMBER	REVISION
Customer Drawing for FANUC FT Kit- Axia90-M50		1:1		B	9630-05-0011	01

Axia90-M50 F/T Sensor				
<b>Loading Characteristics</b>	<b>Fxy</b>	<b>Fz</b>	<b>Txy</b>	<b>Tz</b>
Rated Range	± 1000 N	± 2000 N	± 50 Nm	± 50 Nm
Overload Rating	± 5000 N	± 10,000 N	±250 Nm	± 250 Nm
Effective Resolution	0.4 N	0.4 N	0.01 Nm	0.01 Nm
<b>Stiffness (Calculated)</b>				
X-Axis & Y-Axis Forces (Kx, Ky)	6.3x10 <sup>7</sup> N/m			
Z-Axis Force (Kz)	1.4x10 <sup>8</sup> N/m			
X-Axis & Y-Axis Torques (Ktx, Kty)	9.6x10 <sup>4</sup> Nm/rad			
Z-Axis Torque (Ktz)	1.7x10 <sup>5</sup> Nm/rad			
<b>Resonant Frequency (Sensor Only)</b>				
Fx, Fy, Tz	2300 Hz			
Fz, Tx, Ty	2900 Hz			
<b>Physical Specifications (Sensor Only)</b>				
Center of Mass*	X = -0.54mm	Y = 0.94mm	Z = -2.87mm	
Material	Steel			
Weight	0.78 kg			

Operational Specifications (All Sensor Models)	
Communication	RS422
Supply Voltage	12-30V DC
Maximum Power Consumption	1.7W
System Resolution	16 Bit
Max Data Rate	4kHz
Operating Temperature	0-65°C
IP Rating	IP67

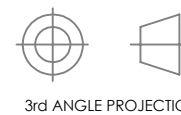
\*Measurements taken from Sensing Reference Frame Origin

	Name	Interface Plate #	Boss Size mm (d X h)	Recess Size mm (d x h)	Bolt Circle mm	Robot Fastener	Robot Fastener Torque Nm	Sensor Frame Z+ Offset mm	Material
Axia90-M50	9105-FTKIT-FANUC-BC31.5-AXIA90-M50	9105-IP-2428	∅ 20 X 3	-	31.5	7X M5	6	40.3	Steel
	9105-FTKIT-FANUC-BC40-AXIA90-M50	9105-IP-2382		∅ 50 X 4	40	7X M6	10	36.9	Steel
	9105-FTKIT-FANUC-BC50-AXIA90-M50	9105-IP-2359		∅ 63 X 4	50	7X M6	10	36.9	Steel
	9105-FTKIT-FANUC-BC56-AXIA90-M50	9105-IP-2429	-	∅ 63 X 4	56	14X M4	3	36.9	Steel
	9105-FTKIT-FANUC-BC64-AXIA90-M50	9105-IP-2430	-	∅ 71 X 4	64	14X M4	3	36.9	Steel

4. All kits will come with 6X M4 sensor fasteners to attach the sensor to the interface plate. These fasteners should be torqued to 5 Nm.

NOTES: UNLESS OTHERWISE SPECIFIED.

DO NOT SCALE DRAWING. ALL DIMENSIONS ARE IN MILLIMETERS.



1031 Goodworth Drive, Apex, NC 27539, USA  
 Tel: +1.919.772.0115 www.ati-ia.com  
 Fax: +1.919.772.8259 ISO 9001 Registered Company

PROPERTY OF ATI INDUSTRIAL AUTOMATION, INC. NOT TO BE REPRODUCED IN ANY MANNER EXCEPT ON ORDER OR WITH PRIOR WRITTEN AUTHORIZATION OF ATI.

DRAWN BY: V.Vavilikolane, 06/01/2023

CHECKED BY: N.Damiano, 6/8/2023

TITLE  
Customer Drawing for FANUC FT Kit- Axia90-M50

PROJECT #	SHEET	SCALE	SIZE	DRAWING NUMBER	REVISION
210712-1	2 OF 2	1:1	B	9630-05-0011	01