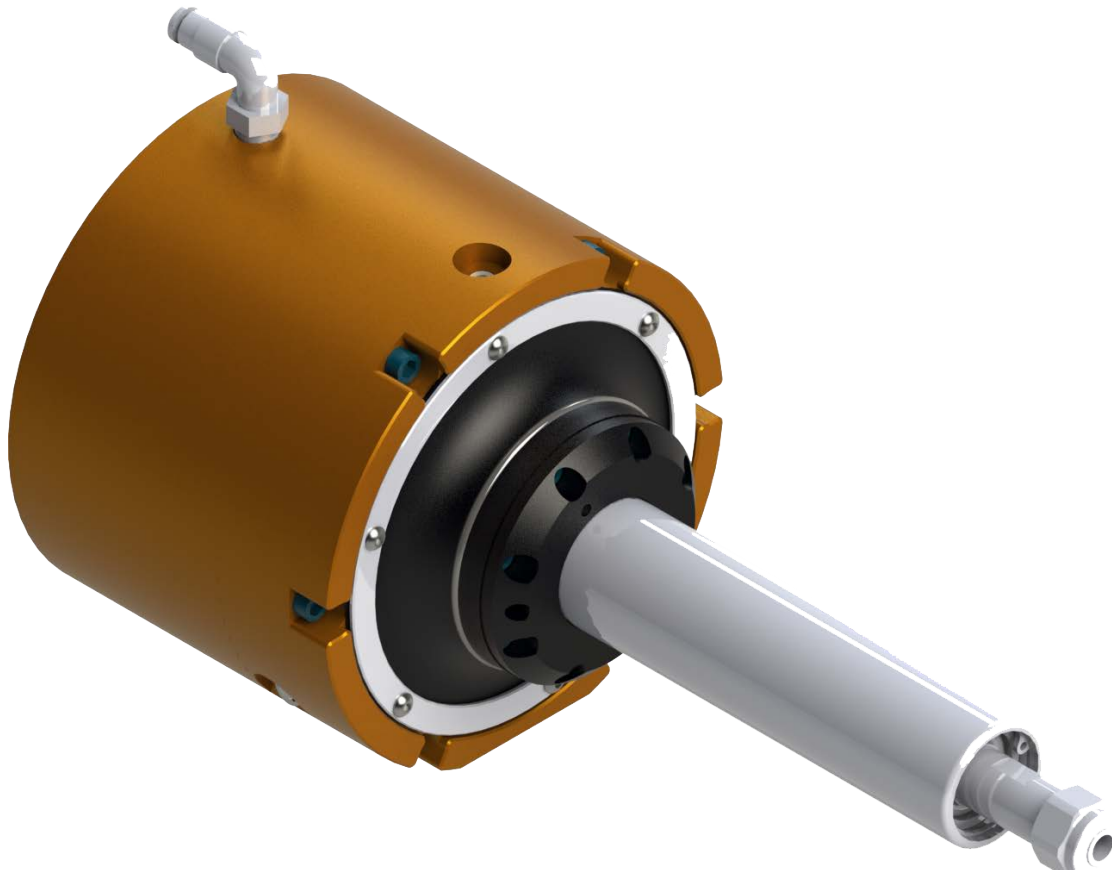




ATI Multi-Axis, Radially-Compliant Robotic Deburring Tool

(Model 9150-RCV-490)

Product Manual



Document #: 9610-50-1032

Engineered Products for Robotic Productivity

Pinnacle Park • 1031 Goodworth Drive • Apex, NC 27539 USA • Tel: +1 919-772-0115 • Fax: +1 919-772-8259 • www.ati-ia.com

Foreword



CAUTION: This manual describes the function, application, and safety considerations of this product. This manual must be read and understood before any attempt is made to install or operate the product, otherwise damage to the product or unsafe conditions may occur.

Information contained in this document is the property of ATI Industrial Automation, Inc (ATI) and shall not be reproduced in whole or in part without prior written approval of ATI. The information herein is subject to change without notice. This manual is periodically revised to reflect and incorporate changes made to the product.

The information contained herein is confidential and reserved exclusively for the customers and authorized agents of ATI Industrial Automation and may not be divulged to any third party without prior written consent from ATI. No warranty including implied warranties is made with regard to accuracy of this document or fitness of this device for a particular application. ATI Industrial Automation shall not be liable for any errors contained in this document or for any incidental or consequential damages caused thereby. ATI Industrial Automation also reserves the right to make changes to this manual at any time without prior notice.

ATI assumes no responsibility for any errors or omissions in this document.

Copyright © (2023) by ATI Industrial Automation. All rights reserved.

How to reach us:

Sale, Service and Information about ATI products:

ATI Industrial Automation

1031 Goodworth Drive
Apex, NC 27539 USA
www.ati-ia.com
Tel: +1 919-772-0115
Fax: +1 919-772-8259

Application Engineering

Tel: +1 919-772-0115
Fax: +1 919-772-8259
E-mail: ATI-MRapplications@novanta.com
24/7 Support: +1 855 ATI-IA 00 (+1 855-284-4200)

Table of Contents

| | |
|---|-----------|
| 1. Safety | 6 |
| 1.1 Explanation of Notifications | 6 |
| 1.2 General Safety Guidelines | 6 |
| 1.3 Safety Precautions | 6 |
| 2. Product Overview | 7 |
| 2.1 Tool Collet Systems | 8 |
| 2.2 Deburring Tool Part Number Structure | 8 |
| 2.3 Technical Description | 8 |
| 2.3.1 Environmental Limitations..... | 8 |
| 2.3.1.1 Operation..... | 8 |
| 2.3.1.2 Storage..... | 9 |
| 2.3.2 Compliance Unit Performance..... | 9 |
| 2.3.3 Air Motor Performance..... | 10 |
| 3. Installation | 11 |
| 3.1 Protection During Transportation | 11 |
| 3.2 Inspection of Condition When Delivered | 11 |
| 3.3 Unpacking and Handling | 11 |
| 3.4 Storage and Preventive Maintenance During Storage | 11 |
| 3.5 Side Mounting Installation | 12 |
| 3.6 Pneumatics | 13 |
| 4. Operation | 15 |
| 4.1 Safety Precautions | 15 |
| 4.2 Normal Operation | 15 |
| 4.2.1 Air Quality..... | 15 |
| 4.2.2 Lubrication..... | 16 |
| 4.2.3 Media Selection, Design, and Maintenance..... | 16 |
| 4.2.4 Deburring Tool Approach Path Should Be Slow and at an Angle..... | 16 |
| 4.2.5 No Axial Loading..... | 16 |
| 4.2.6 Program the Robot to Incorporate 50% Compliance Travel of the Tool..... | 16 |
| 4.3 Deburring Tool Working Environment | 17 |
| 4.4 Tool Center Point (TCP) Position and Programming | 17 |
| 4.5 Bur Operation and Bur Selection | 19 |
| 4.5.1 Bur Selection..... | 19 |
| 4.6 Locking and Unlocking Single Axis Compliance | 22 |

| | |
|--|-----------|
| 5. Maintenance | 23 |
| 5.1 Pneumatics | 23 |
| 5.2 Lubrication | 23 |
| 5.3 Bur Inspection | 23 |
| 5.4 Spindle Boot Inspection | 23 |
| 6. Troubleshooting and Service Procedures | 24 |
| 6.1 Troubleshooting | 24 |
| 6.2 Service Procedures | 25 |
| 6.2.1 Bur Replacement | 25 |
| 6.2.2 Air Motor Removal and Installation | 27 |
| 6.2.3 Ring Cylinder Assembly Replacement | 29 |
| 6.2.4 Muffler Replacement | 31 |
| 6.2.5 Boot Replacement | 33 |
| 7. Serviceable Parts | 34 |
| 7.1 Accessories | 34 |
| 8. Specifications | 35 |
| 9. Terms and Conditions of Sale | 36 |
| 9.1 Motor Life and Service Interval Statement | 37 |
| 9.1.1 Vane Motor Products | 37 |

Glossary

| Term | Definition |
|----------------------|--|
| Adapter Plate | Device for attaching the RCV-490 to either a robot flange or a stationary mounting surface. |
| Aerosols | A suspension of fine solid or liquid particles in gas. |
| Air Filter | Device for removing contamination from air supply lines. Air filters used in ATI applications are for the removal particulates (up to 5 microns). |
| Burr | Any unwanted, raised protrusion on the workpiece. |
| Bur | Cutting tool used to remove burrs from the workpiece. Alternatively referred to as a rotary file, bur, or bit. |
| Climb Milling | Cutting method where the direction of bur rotation and tool motion are the same. |
| Coalescing Filter | Device designed to remove liquid aerosols from the supply air lines. |
| Collet | Gripping device used to hold cutting tools in the spindle. |
| Compliance | The ability of the spindle to passively move in response to deviations of the workpiece. |
| Conventional Milling | Method of cutting where the direction of tool motion is opposite of tool rotation. |
| Deburr | To remove the burrs from a machined piece of machined work. |
| End-Effector | Tool used by the robot to perform a particular function. |
| RCV | The ATI series of products that has radial compliance vane motor and can limit articulation to a single axis for increased rigidity that is parallel to the direction of bur motion. |
| Regulator | Device used to set and control the supplied air pressure to acceptable levels. |
| Solenoid Valve | Electrically controlled device for switching air supplies on and off. |
| Spindle | The rotating portion of the RCV-490 assembly. |
| Vane-Type | A positive displacement air motor design utilizing partitions (vanes) to separate expansion regions inside a housing. |

1. Safety

The safety section describes general safety guidelines to be followed with this product, explanations of the notifications found in this manual, and safety precautions that apply to the product. Product specific notifications are imbedded within the sections of this manual (where they apply).

1.1 Explanation of Notifications

These notifications are used in all of ATI manuals and are not specific to this product. The user should heed all notifications from the robot manufacturer and/or the manufacturers of other components used in the installation.



DANGER: Notification of information or instructions that if not followed will result in death or serious injury. The notification provides information about the nature of the hazardous situation, the consequences of not avoiding the hazard, and the method for avoiding the situation.



WARNING: Notification of information or instructions that if not followed could result in death or serious injury. The notification provides information about the nature of the hazardous situation, the consequences of not avoiding the hazard, and the method for avoiding the situation.



CAUTION: Notification of information or instructions that if not followed could result in moderate injury or will cause damage to equipment. The notification provides information about the nature of the hazardous situation, the consequences of not avoiding the hazard, and the method for avoiding the situation.

NOTICE: Notification of specific information or instructions about maintaining, operating, installing, or setting up the product that if not followed could result in damage to equipment. The notification can emphasize, but is not limited to: specific grease types, best operating practices, and maintenance tips.

1.2 General Safety Guidelines

The customer should first read and understand the operating procedures and information described in this manual. Never use the RCV-490 for any purpose not explicitly described in this manual. Follow installation instructions and pneumatic connections as described in this manual.

All pneumatic fittings and tubing must be capable of withstanding the repetitive motions of the application without failing. The routing of pneumatic lines must minimize the possibility of stress/strain, kinking, rupture, etc. Failure of critical pneumatic lines to function properly may result in equipment damage.

1.3 Safety Precautions



CAUTION: Do not use burs rated for less than the speed of the RCV-490. Using these too may cause injury or damage equipment. Always use burs rated for at least the speed of the RCV-490.



CAUTION: Do not use serviceable parts other than original ATI serviceable parts. Use of serviceable parts not supplied by ATI can damage equipment and void the warranty. Always use original ATI serviceable parts.



CAUTION: Do not perform maintenance or repair on the deburring tool product unless the tool is safely supported or placed in the tool stand and air has been turned off. Injury or equipment damage can occur with tool not placed in a tool stand and air remaining on. Place the tool safely in the tool stand and turn off the air before performing maintenance or repair on the deburring tool product.

2. Product Overview

ATI Multi-Axis, Radially-Compliant Robotic Deburring Tool (RCV-490) is a robust, high-speed, and lightweight vane-type air motor deburring unit for deburring materials, such as: aluminum, plastic, and steel with a robot. The RCV-490 is especially suited for removal of parting lines and flash from parts. However, its flexible design allows it to be used in a variety of applications.

The deburring tool's pneumatically controlled, articulated design allows the cutting bit to follow the part profile and compensate for surface irregularities while maintaining a constant, configurable force. This allows high feed rates with uniform quality in any orientation. The RCV-490 has a single axis lockout feature to limit articulation to a single axis to provide increased rigidity that is parallel to the direction of bur motion. The rigid parallel support is capable of producing greater control of surface finish and reduced tool chatter. To maintain the proper orientation of the cutting tool and the part profile requires more skill and effort in robot programming.

Compliance is supported by air pressure applied to the shaft of the unit and is used to perform consistent deburring on irregular part patterns. The RCV-490 utilizes standard industrial tungsten-carbide bits that allow for adaptation to changing assembly lines and part requirements.

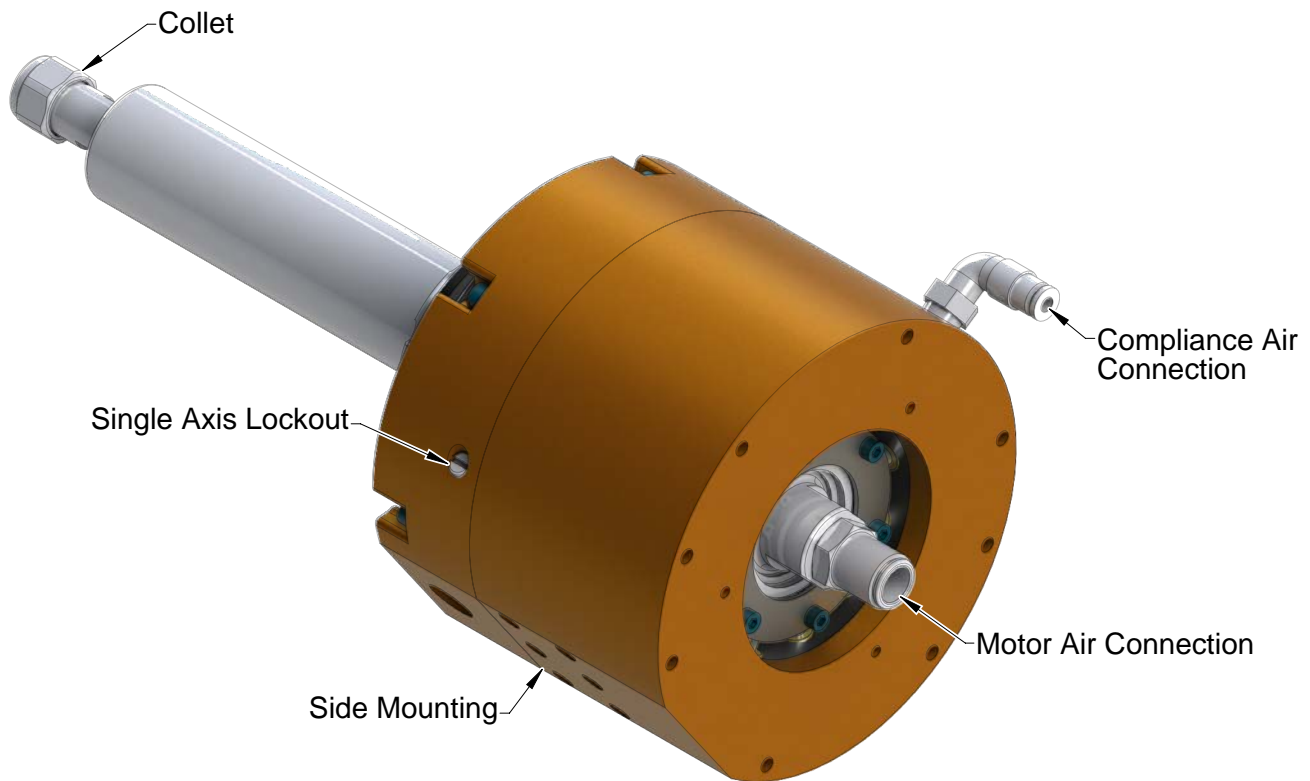
The RCV-490 provides a side mounting with (2) dowel pin locations and threaded holes. Custom adapter plates for side mounting are available from ATI (refer to the [RCV Drawing](#) for more information).

The RCV-490 is equipped with at 1/4" NPT push-to-connect fitting to supply the motor air and 5/32" push-to-connect fittings to supply the compliance air.

A tool collet system secures the bur. Many collet sizes and bur tools are available to accommodate a wide variety of applications.

The RCV-490 can be locked to single axis compliance using the single axis lockout (refer to [Section 4.6—Locking and Unlocking Single Axis Compliance](#) for more information).

Figure 2.1—RCV-490 Deburring Tool



2.1 Tool Collet Systems

The standard tool holding system for RCV-490 series of products is an economical, industry standard ER-11 collet design. This design is suitable for most applications where industry standard shank diameter cutting tools are used and run out tolerances of up to 0.001” (0.025 mm) are acceptable. The ER-11 collet system is used worldwide on machine tools which allows users to procure different collet sizes from local industrial supply firms.

All deburring tool products utilize removable collets to grip customer supplied cutting tools. Different collet diameters may be substituted to retain the various bur shank diameters. The collet retaining nut is loosened to open the collet, allowing cutting tools to be removed and inserted. Once the tool is set to the desired depth, wrenches are used to tighten the collet nut securing the cutting tool in the collet. The air motor design does not allow the installation of quick-change or drawbar collet systems.

2.2 Deburring Tool Part Number Structure

For the following part number, 9150-RCV-XXX

- “RCV” designates a multi-axis a tool of radial compliance and vane motor
- “XXX” designates the motor power in Watts

2.3 Technical Description

A technical overview of the product is provided in the following section: For additional technical specifications (refer to [Section 8—Specifications](#)).

2.3.1 Environmental Limitations

2.3.1.1 Operation

| Table 2.1—Operation | |
|------------------------------|--|
| Installation Position | Mounted to robot by means of the side mounting pattern. |
| | Mounted to a table or stand by means of the bench adapter. The robot is carrying the work piece to the RCV-490. |
| Temperature Range | 5 °C – 35 °C 41 °F – 95 °F |
| Utilities | The tool requires the following: <ul style="list-style-type: none"> • Clean, dry, filtered air. The vane-type air motor can be operated with the recommended amount of air tool oil to the motor air supply. • A coalescing filter and filter elements that are rated 5 micron or better. • Air supply to the spindle must be 6.2 Bar (90 psi) to develop the full rated power. • The radial compliance (centering) air must be supplied at 1.0–4.1 Bar (15–60 psi) from a regulated source. |

2.3.1.2 Storage

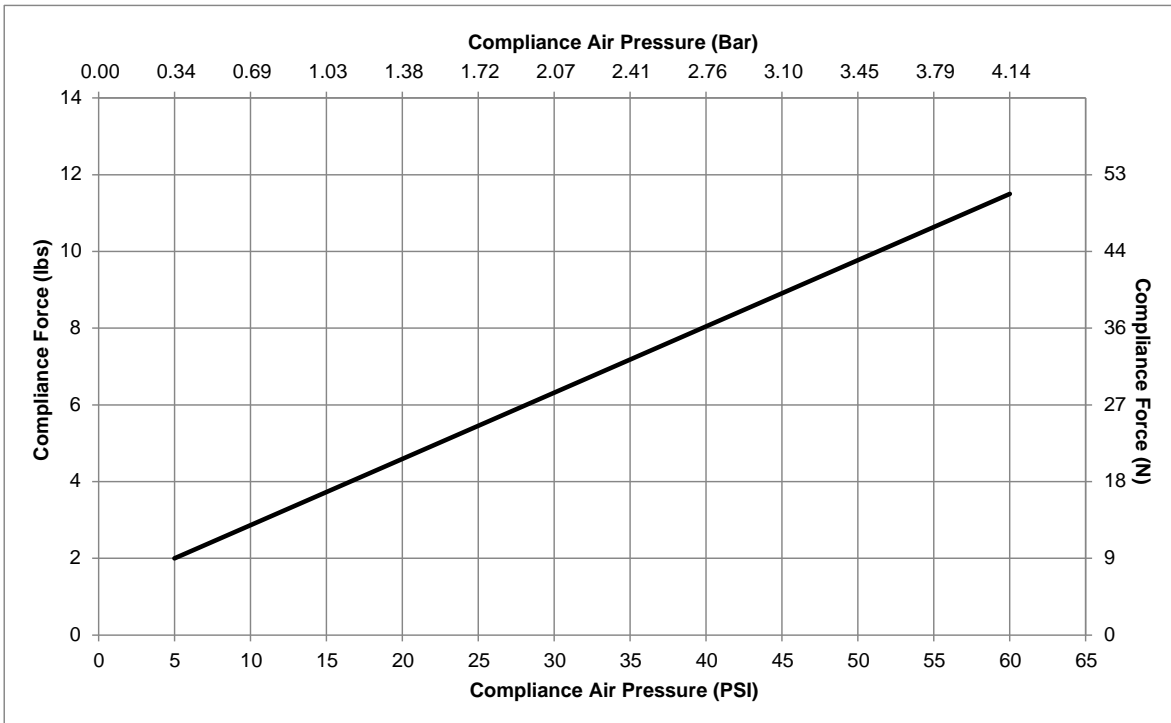
| Table 2.2—Storage | |
|-------------------|--|
| Temperature Range | 0 °C – 45 °C 32 °F – 113 °F |
| Conditions | The tool should be stored in its crate and in a dry place. When not in use, keep the unit in its crate if possible. Consult Section 3.4—Storage and Preventive Maintenance During Storage of this manual. |

2.3.2 Compliance Unit Performance

The following graph illustrates the variation of compliance force with applied air pressure in the vertical orientation with the collet pointed downward (toward the ground). Measurements may vary from one product to another and should only be regarded as nominal.

The actual force characteristics are dependent on the mounting orientation and condition of the unit. In applications, where the RCV-490 is mounted horizontally, additional compliance air pressure is required to overcome the weight of the motor. Compliance pressure is also dependent upon the material of the workpiece, type of bur tool, and the amount of material that is removed.

Figure 2.2—RCV-490 Compliance Force Curves (Measured at the Spindle Tip)



2.3.3 Air Motor Performance

The following graphs illustrate the motor torque and power performance. The air motor operating speed changes according to the applied load, until the motor develops the power that is required to perform the specific task. The idle speed of the motor is at maximum when no load is applied. Without an applied load, the motor decreases to a slower operating speed at which the motor develops maximum torque. If the torque that is required to perform a specific task exceeds the maximum available operating speed, the motor will stall. Therefore, multiple light passes are preferred over slow, heavy cuts.

Figure 2.3—RCV-490 Motor Power Curves (SAE)

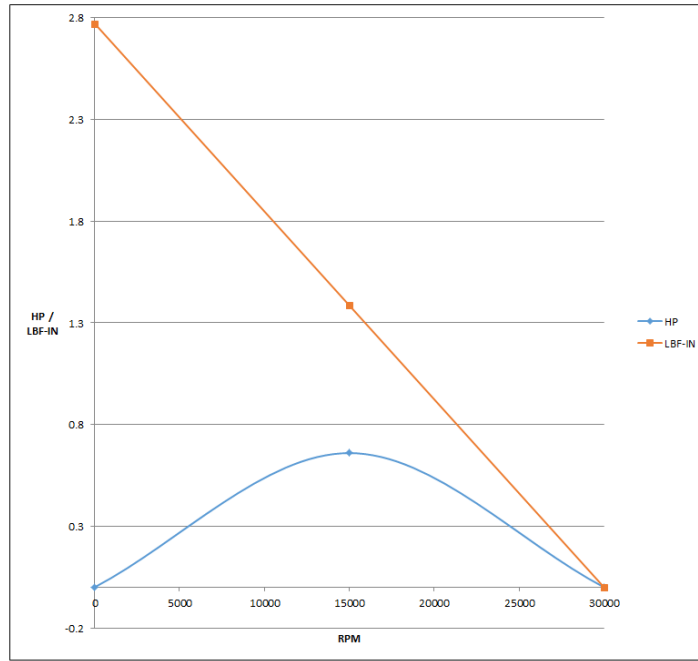
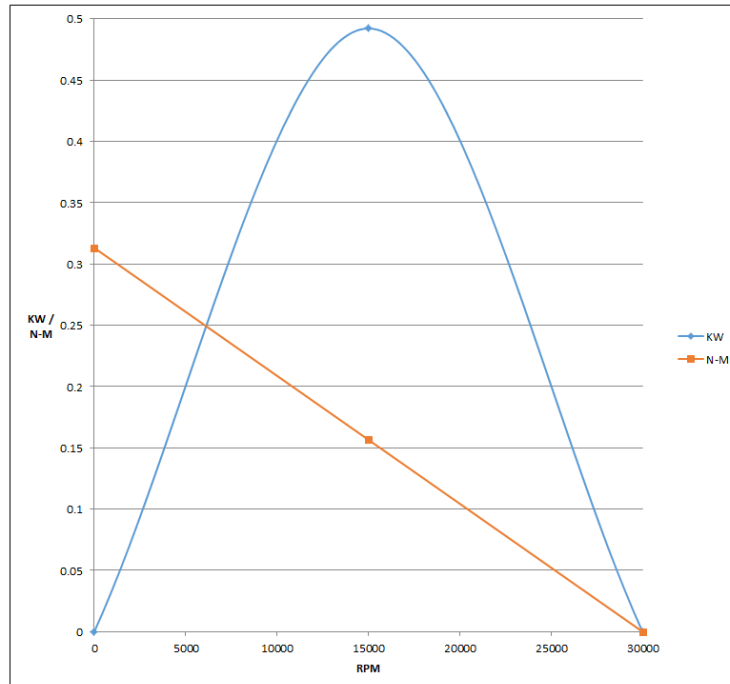


Figure 2.4—RCV-490 Motor Power Curves (Metric)



3. Installation

The RCV-490 is delivered fully assembled. Optional equipment, such as: mounting adapter plates, bur tools, and additional collets will be sold separately.

3.1 Protection During Transportation

The RCV-490 is packaged in a crate that secures and protects the tool during transportation. Always use the crate when transporting the RCV-490 in order to minimize the risk of damage.

3.2 Inspection of Condition When Delivered

Upon receipt, the following should be checked:

- Delivery in accordance with freight documents
- Packaging is in good condition

If there is damage to any of the packaging, or if any of the goods have been exposed to abnormal handling, unpack those parts that may have been damaged for a closer inspection. Notify ATI for assistance in the evaluation of the product condition, if necessary.

3.3 Unpacking and Handling

The RCV-490 should always be placed inside the accompanying crate while transporting, storing, and handling.

Pneumatic lines are attached, bundled, and must be strain-relieved in a manner that allows for freedom of movement during operation.

3.4 Storage and Preventive Maintenance During Storage

The RCV-490 should always be stored in its crate, when not in use. The RCV-490 should be stored in a dry place. For long-term storage, the RCV-490 should be thoroughly cleaned of any burrs or debris. Do not disassemble the RCV-490. Place the RCV-490 within a sealed plastic bag inside the crate.

3.5 Side Mounting Installation



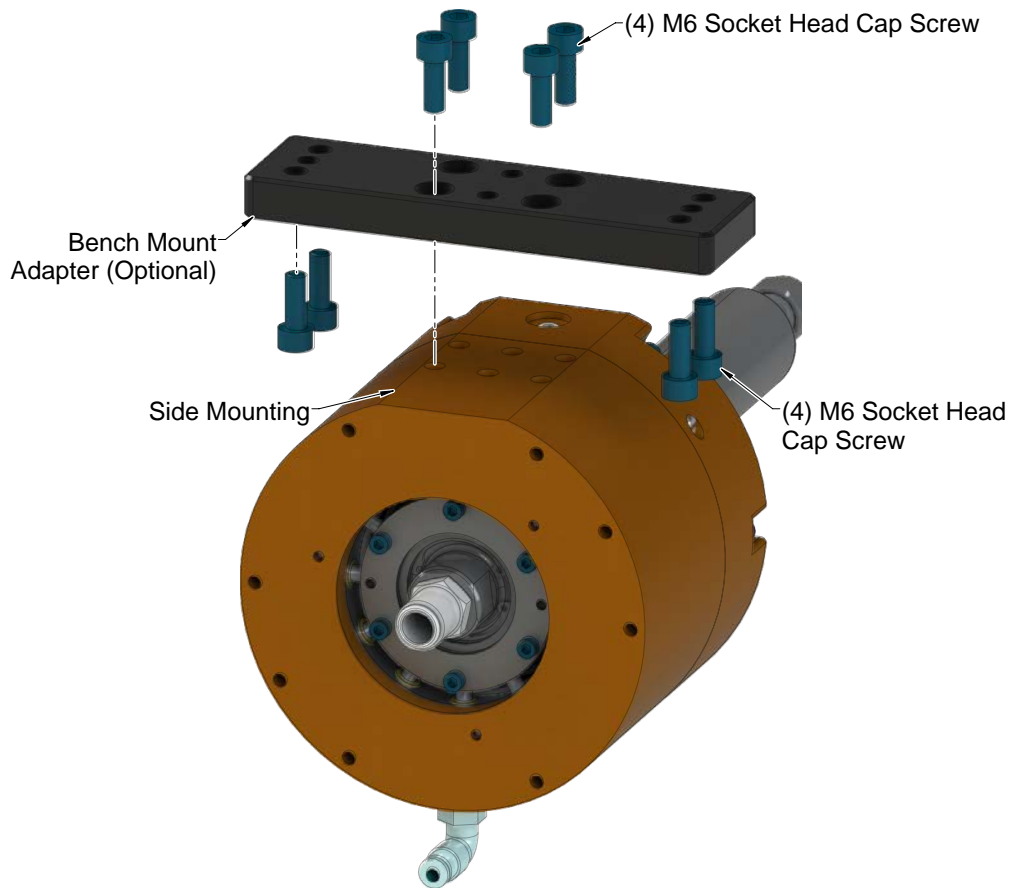
CAUTION: The length of the fasteners should not interfere with the compliant motion of the air motor spindle (refer to the [RCV Drawing](#) for the maximum fastener length). Do not use fasteners that exceed the maximum length; otherwise, damage will occur.



CAUTION: Lock washers are recommended on all mounting fasteners. Liquid thread lockers should not be used for the mounting fasteners as this may damage or remove thread inserts during disassembly.

The side mounting pattern of the RCV-490 consists of (2) dowel pin holes and (4) threaded holes (refer to [Figure 3.1](#) and the [RCV Drawing](#)). An optional bench mount adapter plate allows the RCV-490 to attach to a bench or other work surface. The bench mount adapter may also be used with intermediate plates to attach the RCV-490 to a robot flange or to an ATI Tool Changer. If the RCV-490 is permanently mounted to a work surface, the robot carries the part to the deburring tool to be deburred.

Figure 3.1—Side Mounting Installation



3.6 Pneumatics

Connect the RCV-490 as shown in the *RCV Pneumatic Diagram*.



CAUTION: Pneumatic components used for the motor drive circuit must be capable of meeting the air consumption requirements (refer to [Section 8—Specifications](#)). Poor performance will result if the correct components are not used.


Conventional, customer-supplied, pneumatic components are used to control the air supply to the RCV-490.

To develop full power from the vane-type spindle air motor, ATI recommends that the user install a high-flow pneumatic pressure regulator (ATI Part #9005-50-6174, or equivalent) and a high-flow valve to properly supply a stable air supply of 6.2 Bar (90 psi) to the spindle motor (refer to [Section 8—Specifications](#) for the maximum flow requirements). Lubrication is required for the motor. The air supply should be dry and filtered; using a coalescing filter with elements rated for 5 micron or better.

A second precision, self-relieving regulator (ATI Part # 9005-50-6164, or equivalent) and valve supply the compliance (centering) mechanism. The compliance air pressure corresponds to the side, radially applied force on the rotary bur. Adjust the compliance air pressure and robot traverse speed to achieve the desired finish. The compliance air supply must be dry. Because very little airflow is required, a significantly smaller valve can be used (consult the valve and regulator supplier's literature when selecting these components).

If the work piece can be deburred with equal force, a conventional manual pressure regulator can be used for the compliance air supply. If the burrs vary from place to place on the work piece, and this variation is repeatable for all work pieces of the same type, it may be necessary to adjust the force using an analog pressure regulator that is controlled from the robot. An analog output port in the robot or logic controller will be needed.

All solenoid valves are actuated from the robot or program logic controller by means of a digital output signal.

| | |
|---|---|
|  | <p>WARNING: All pneumatic fittings and tubing must be capable of withstanding the repetitive motions of the application without failing. The routing of pneumatic lines must minimize the possibility of over stressing, pullout, or kinking the lines. Failure to do so can cause some critical pneumatic lines not to function properly and may result in damage to the equipment.</p> |
|---|---|

| Table 3.1—Pneumatic Connections | | |
|---------------------------------|---|---|
| Connection Function | Connection Type | Pressure Requirement |
| Air Motor Inlet | 1/4" tapped port (1/4 NPT in the motor body) | 6.2 bar (90 psi) |
| Compliance (Radial) Force Inlet | 4 mm (5/32") quick-connect tube | 1.0–4.1 bar (15–60 psi) (Maximum) |
| Exhaust | Vented to atmosphere | Not Applicable |

For the motor air supply, use the largest possible flexible plastic tubing or hose that has a 19/32" (3/8") minimum inside diameter. For the compliance air force and compliance lock air supply, 4 mm (5/32") outer diameter plastic tubing is sufficient. The vane-type air motor vents exhaust air to the environment through the supplied muffler.

The sound level around deburring equipment cannot be predicted by ATI because the sound pressure from deburring operations is process and part dependent. To reduce the sound from the cutting operation in neighboring working areas, a customer-supplied barrier surrounding the installation may be installed (Plexiglas® or Lexan® is preferred, see [Section 8—Specifications](#)).

The compliance force, air supply pressure regulator should have a range of 1-4.1 Bar (15-60 psi). When testing for the proper contact force, start with about 1 bar (15 psi) and increase slowly until the desired cut is achieved.

4. Operation

These operating instructions are intended to help system integrators program, start up, and set up a robotic deburring cell containing a deburring tool. The system integrator should be familiar with the task of deburring and have extensive knowledge about automation applications that incorporate robots.

4.1 Safety Precautions



WARNING: Never use the RCV-490 for purposes other than robotic deburring. If used in any other way, serious injury or damage to equipment may occur.



WARNING: Never use the RCV-490 as a hand-held machine. If used in this way, serious injury or damage to equipment will occur.



WARNING: All personnel involved in the operation of the deburring tool, should have a thorough understanding of the operating procedures. Failure to follow these procedures or neglecting safety precautions can create hazardous situations that may injure personnel or damage the deburring installation and the RCV-490.



WARNING: Never operate the RCV-490 product without wearing hearing protection. High sound levels can occur during cutting. Failure to wear hearing protect can cause hearing impairment. Always use hearing protection while working in proximity of the RCV-490.



WARNING: Never operate the RCV-490 product without wearing eye protection. Flying debris can cause injury. Always use eye protection while working in the proximity of the RCV-490.



CAUTION: Do not use burs that are rated for less than the speed of the RCV-490. Using lower speed burs, may cause injury or damage equipment. Always use burs rated for at least the speed of the RCV-490 that is being used.



CAUTION: Never be present near the RCV-490 while it is started or in operation. Flying debris and rotating parts can cause injury. If it is necessary to approach the RCV-490 while in motion, stand behind appropriate Plexiglas or Lexan windows. Provide a barrier to prohibit people from approaching the RCV-490 while in operation.



CAUTION: Never use or start the RCV-490 without first reading and understanding the operating procedures described in this manual. Never use the RCV-490 for any purposes, or in any ways, not explicitly described in this document. Using the deburring tool without fully understanding the installation and operating procedures may cause injury to personnel or damage to equipment. Mount the RCV-490 and connect the pneumatic control equipment as described in this manual. Operate the RCV-490 as described in the manual.

4.2 Normal Operation

The following sections describe the normal operating conditions for the RCV-490 deburring tools.

4.2.1 Air Quality

The air supply should be clean, lubricated, dry, and filtered. A coalescing filter that has elements rated for 5 micron or better is required. The air must be supplied at 6.2 bar (90 psi).

Air quality affects tool performance more than almost any other factor. Particulate can block airflow or impede vane motion. If deburring tools do not receive the proper air pressure, the tool stalls. Any water in the system damages the housing and vanes.

4.2.2 Lubrication

Lubricate the air supply with 1-2 drops per minute of commercial air tool oil.

Vane motors for the RCV-490 should be run with lubrication in the air supply to maximize motor life.

4.2.3 Media Selection, Design, and Maintenance

Use carbide bits under 11/16" diameter and 2" in length.

Do not use media that requires axial loading.

Do not use media that is rated below the RCV-490 idle speed.

Check media quality regularly to ensure it is not dull or worn. Using worn media causes a poor surface finish and increased wear on the bearings that results in premature tool failure.

In many robotic deburring applications, including steel and aluminum, no cooling or lubrication of the rotary bur is necessary. For some materials and situations, the addition of coolants or compressed air may aid the cutting process. If it is determined that liquid coolants are required, a non-oil, cutting type fluid should be used to prevent premature wear of the spindle bearing.

4.2.4 Deburring Tool Approach Path Should Be Slow and at an Angle

The RCV-490 should approach the workpiece slowly and at an angle.

When beginning a deburring pass, try to minimize the initial impact on the work piece by slowly approaching the tool at an angle while maintaining a slightly parallel path with the surface.

If the tool quickly approaches perpendicularly to the workpiece, the result is gouging and premature wear of the tool bearings and results in premature failing of the unit. Additionally, collisions could result and create a hazardous situation for both personnel and equipment.

4.2.5 No Axial Loading

Do not apply axial loads that are parallel to the axis of the tool's rotation.

Do not deburr shallow edges where the bur contacts the underlying material below the edge, because axial loading results on the tool and bearings. This axial loading results in premature failing of the unit.

Do not attempt to deburr to a depth of more than 30% of the diameter of the bur. Exceeding this depth causes excessive chatter and could result in the following: premature bur wear, the motor stalling, and damage to the bearings, the compliance ring, or both.

When deburring holes, interpolate the perimeter. Do not use a countersink tool because that tool results in axial loading and premature wear of the bearings.

4.2.6 Program the Robot to Incorporate 50% Compliance Travel of the Tool

Program the robot to have the tool's compliance at 50% travel when on the nominal path.

As the part's edge deviates from the perfect path, the cutting bit can use compliance to follow along high and low spots without losing contact or hitting the positive stop and gouging.

Do not "bottom out" the compliance and hit the positive stop.

Repeated impacts on the positive stop create slop in the compliance and reduce recentering.

4.3 Deburring Tool Working Environment

As described in previous sections, the RCV-490 should only be used in conjunction with a robot in a secured work cell/chamber.

The work cell must be secured by means of barriers to prohibit personnel from entering the cell. A lockable door should be included as a part of the barrier in order to facilitate access to the cell for authorized personnel only. The barrier could consist partly or fully of Plexiglas/Lexan to facilitate observation of the deburring operations.

During system or deburring tool maintenance, make sure the RCV-490 and robot are stopped before entering the robot cell. When installing and testing, never be present in the cell when the RCV-490 is running.

Be aware of rotating parts. Use eye-protection while working around the RCV-490.

Be aware of high sound levels. While the RCV-490 air motor is not loud, the cutting action associated with deburring frequently is loud. Always use hearing protection while working in the proximity of the deburring cell.

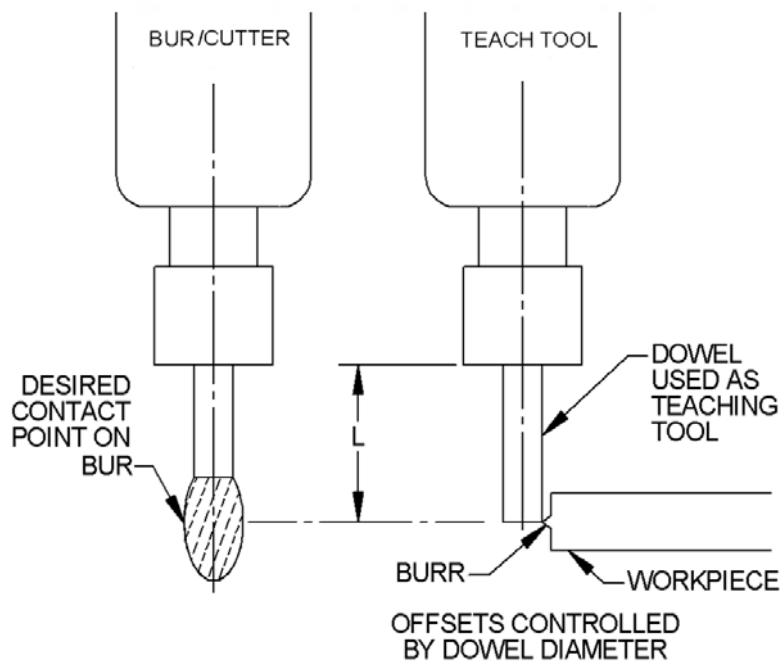
The RCV-490 should not be used to deburr materials that are prone to fracture. A fracturing work piece may result in pieces of material damaging surrounding working environment and injuring personnel. Material removed correctly should be in the form of chips.

4.4 Tool Center Point (TCP) Position and Programming

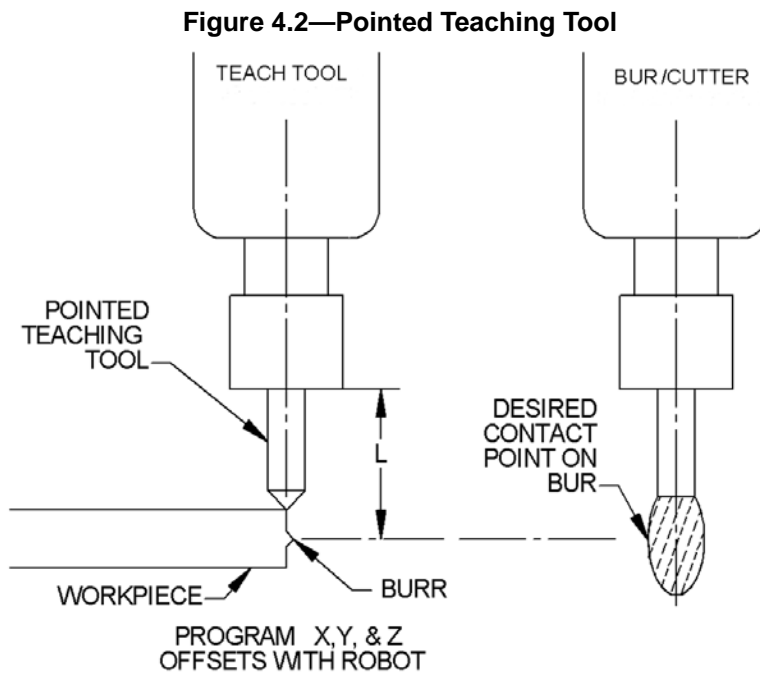
The overall deburring tool dimensions are shown in the [RCV Drawing](#). The RCV-490 provides radial compliance and performs best when the cuts taken are not excessively deep. The RCV-490 spindle must never be running while programming the robot. During teaching, the compliance air must be on and supplied above a minimum of 0.35 Bar (5 psi).

Two programming methods are suggested, but others are possible. In the first method, a dowel pin of suitable diameter is inserted in place of a cutting tool (simulating the burr shank diameter) when teaching the robot path. For 6 mm collets, this will mean a 6 mm diameter pin of suitable length. The dowel pin should extend sufficiently from the collet to reach the surface on the burr where cutting is desired ([Figure 4.1](#)). The diameter of the burr should not exceed that of the dowel pin by more than the compliance of the RCV-490 deburring tool.

Figure 4.1—Dowel Teaching Tool



Another programming method is to teach the path using the centerline of the bur as a guide, following the edge of the part, and then manually or automatically adding offsets to the robot path points to achieve the final correct bur path (Figure 4.2). The programming method used depends on the robot's capabilities and programmer preferences.



Interior corners represent a complex situation for compliant deburring tools. In general, the bur must not be allowed to simultaneously contact both perpendicular surfaces of an interior corner. The resulting force imbalance in two planes causes severe tool chatter. The customer is advised to create a tool path that prevents the bur from simultaneously contacting two perpendicular surfaces. A tapered bur may reach further into an interior corner if the tool is presented in an inclined orientation and closer to the tip of the tool (Note: When working near the tip of a tapered bur the surface cutting speed is reduced).

When deburring interior radii, moderate to severe tool chatter may occur (similar to example given in previous paragraph). Do not attempt to deburr an inside radius less than 1.5 times the diameter of the desired bur ($R_{min} = 1.5 \times \text{Bur diameter}$).

When running the robot program the first time, observe the path with the radial compliance air supply turned down to approximately 0.35 Bar (5 psi). When the robot path speed is increased, it is important to notice the robot may deviate from the programmed path. Verify that the bur is deflected but continues to contact the work surface at operational robot path speed. Once the robot path has been confirmed, the compliance force of the bur should be adjusted, as described in [Section 3.6—Pneumatics](#) (in order to achieve a correct depth of cut).

4.5 Bur Operation and Bur Selection

The RCV-490 will perform best in climb milling (when the bur directions of travel and rotation are the same). In the case of the RCV-490, the bur rotation is clockwise when viewed from above. Climb milling would therefore involve clockwise motion around the part being deburred. In climb milling, the heaviest cut is made as the bur enters the workpiece and the chip becomes narrower as the cut is completed. In conventional milling, the bur travels in a direction opposite of bur rotation. This may aid in bur stability for some operations, however, the cutting edge of the bur is subjected to higher friction and cutting forces. Bur wear is accelerated in this mode and surface finish quality generally is reduced. When using conventional milling technique take extra care around corners. A corner poses a potential hazard where the cutting force can deflect the bur and cause the bur to break as the robot continues along its path.

The selection of a bur is dependent upon the workpiece material, geometry, and the depth of cut. Please see [Section 4.5.1—Bur Selection](#) for a short list of burs and suitable applications. A family of burs is available for working with die cast alloys, aluminum, and plastics; these burs have fewer teeth and increased relief to minimize chip loading.

Plastics represent a difficult deburring challenge due to the phenomenon of chip re-welding. In this process, if the bur is dull or the settings are not correct for the material, chips will melt and weld to the bur or work piece. This can quickly load a bur and produce unacceptable results. In general, the traverse or feed rate of the RCV-490 is higher for plastics to minimize melting and welding. A faster feed rate creates larger cuts that more effectively remove heat from the bur-tool interface.





4.5.1 Bur Selection




Standard length commercial burs are used with the RCV-490. The length of these tools are typically around 2" for 1/4" shank diameter burs (50 mm for 6 mm diameter). Avoid longer shank burs with descriptions such as: "long" or "extended" shank. Using long or extended shank burs in the RCV-490 will place higher loads and vibrations on the motor bearings and result in reduced motor life. Bearing failure caused by the use of long or extended shank burs is not covered under warranty.



CAUTION: Do not use long or extended shank burs with the RCV-490. Long shank tools can lead to premature failure of the air motor and is not covered under warranty. Use a standard length commercial bur with the RCV-490.

ATI can provide guidance in bur selection; however, only experimentation will yield desired result. The following table includes many common bur types and burs recommended for particular applications.

| Table 4.1—Bur Selection | | |
|---|---|---|
| | Materials/Application | Features/Benefits |
|  | 9150-RC-B-24033—Diamond Cut, 1/4” Bur Diameter, 5/8” Bur Length, 1/4” Shank | <ul style="list-style-type: none"> • For hardened and tough materials, super alloys, and stainless steel, alloyed cast steel and fiber reinforced plastics • Edge and surface working • Built up Welds of high-tensile strength in mold and die making |
|  | 9150-RC-B-24061—Standard Cut, 3/8” Bur Diameter, 3/4” Bur Length, 1/4” Shank | <ul style="list-style-type: none"> • For steels of high tensile strength die steels, cast steel, built up welds, tough materials, and welds • For beveling • For chamfering • For deburring |
|  | 9150-RC-B-24063—Diamond Cut, 3/8” Bur Diameter, 3/4” Bur Length, 1/4” Shank | <ul style="list-style-type: none"> • For hardened and tough materials, super alloys, and stainless steel, alloyed cast steel and fiber reinforced plastics • Edge and surface working • Built up Welds of high-tensile strength in mold and die making • Higher cutting capacity than standard cuts |
|  | 9150-RC-B-24065—Aluminum Cut, 3/8” Bur Diameter, 5/8” Bur Length, 1/4” Shank | <ul style="list-style-type: none"> • For greasy aluminum alloys, soft non-ferrous metals and thermoplastics • For deburring • For use on cast aluminum |

| Table 4.1—Bur Selection | | |
|--|---|---|
| | Materials/Application | Features/Benefits |
|  | 9150-RC-B-24645—Aluminum Cut, 3/8” Bur Diameter, 5/8” Bur Length, 1/4” Shank | |
| | <ul style="list-style-type: none"> • For greasy aluminum alloys, soft non-ferrous metals and thermoplastics • For deburring • For use on cast aluminum | <ul style="list-style-type: none"> • Easy chip flow-through positive rake angle, rounded base of tooth, convex tooth back • No loading of the flutes, not even while cutting sticky metals • Smooth operation due to the peeling effect of the teeth |
|  | 9150-RC-B-26408—Cut FVK, 1/4” Bur Diameter, 5/8” Bur Length, 1/4” Shank | |
| | <ul style="list-style-type: none"> • For trimming and contour milling of all glass and carbon fiber reinforced plastics | <ul style="list-style-type: none"> • Special cut geometry allows high feed rates due to low cutting forces |
|  | 9150-RC-B-24862—Alt Diamond Cut, 1/4” Bur Dia., 3/4” Bur Length, 1/4” Shank | |
| | <ul style="list-style-type: none"> • Universal use, for ferrous and non-ferrous metals, plastics • Rough finishing of castings • Surface working • Weld removal • Brazed welds | <ul style="list-style-type: none"> • Smoother operation, improved tool control • High cutting action • Non-clogging • Smaller chips, reduced slivers • Even, smooth surfaces |

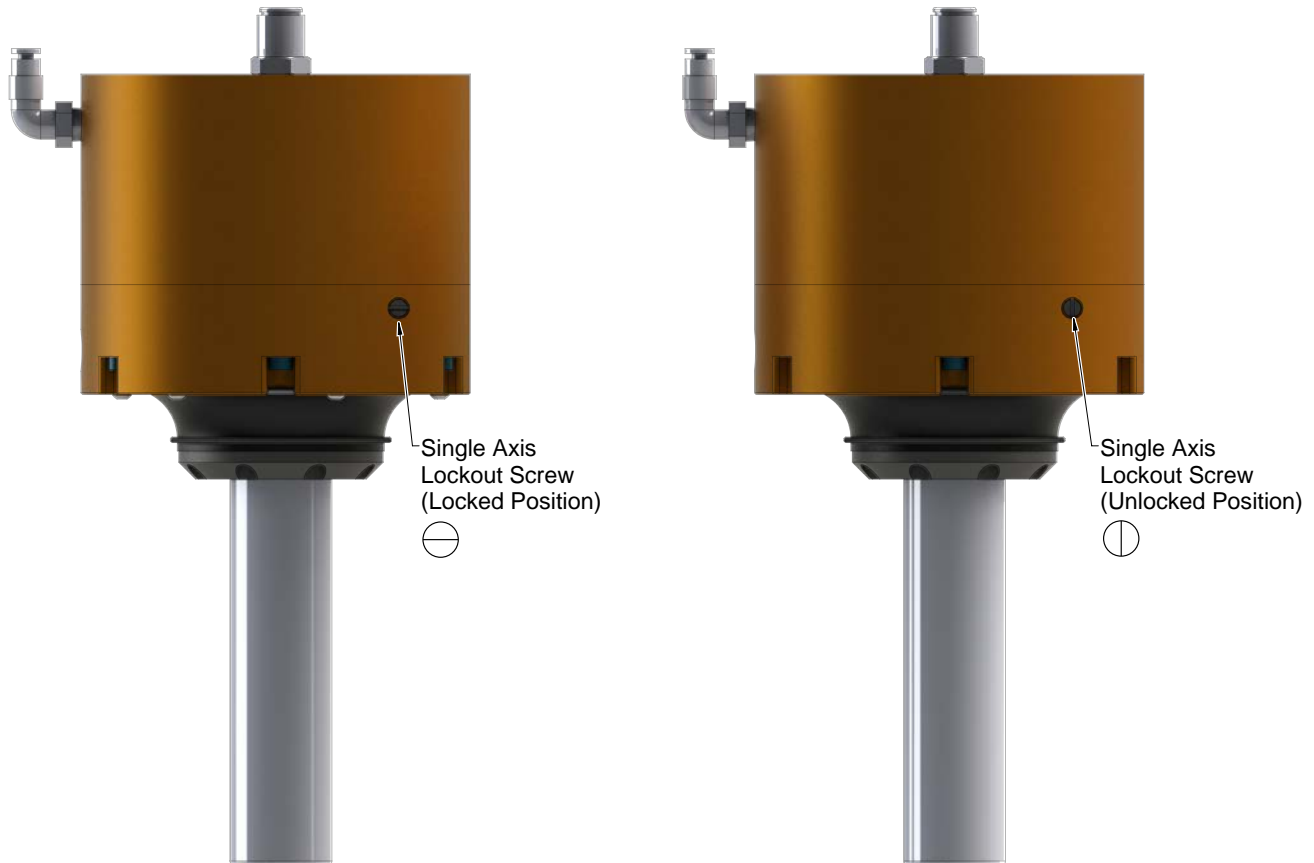
4.6 Locking and Unlocking Single Axis Compliance

The RCV-490 can be locked to be compliant in a single axis.

Tools required: Flat headed screwdriver

1. Turn the single axis lockout screw as shown in [Figure 4.3](#) for desired compliance.
 - Locked = Single axis compliance
 - Unlocked = 360° of compliance

Figure 4.3—Single Axis Compliance



5. Maintenance

The RCV-490 is designed to provide reliable service for long periods of operation. While simple in design, there are parts in the assembly that are serviceable by the user. The user is encouraged to return the unit to ATI for service. [Section 6—Troubleshooting and Service Procedures](#) is provided to assist the user when they choose to service the unit in the field.

For all service, it is recommended that the air supply (before the solenoid valves) be disconnected. Purge any trapped air pressure in the lines. It is suggested that the air supply be “locked out” to prevent accidental operation of the spindle. During maintenance operations (refer to [Section 6—Troubleshooting and Service Procedures](#) for maintenance instructions) service and repair parts are identified in [Section 7—Serviceable Parts](#) and the [RCV Drawing](#).

The RCV-490 is of modular construction. The subassemblies shown in [Section 7—Serviceable Parts](#) may be purchased and installed quickly to return a unit to operation.

5.1 Pneumatics

The air lines to the deburring tools should be checked routinely for their general condition and replaced as required. The air to the RCV-490 must be filtered and dry. The air filters should be checked and replaced as required to maintain optimum performance. The life of the filter elements is dependent on the quality of compressed air at the customer’s facility and therefore cannot be estimated.

5.2 Lubrication

The RCV-490 air motor must be supplied with clean, dry, filtered, and lubricated air. See [Section 3.6—Pneumatics](#) for details on air supply and quality.



CAUTION: It is recommended that the customer use a coalescing filter and filter elements rated 5 micron or better.

5.3 Bur Inspection

The bur will wear depending on cut depth, feed rate, and the material that is being deburred. Inspect the bur regularly for wear and refer to [Section 6—Troubleshooting and Service Procedures](#) for symptoms of a worn bur. If necessary, replace the bur (refer to [Section 6.2.1—Bur Replacement](#)).

5.4 Spindle Boot Inspection

The spindle boot prevents debris from entering the housing and protects internal components. Inspect the boot regularly for damage (refer to [Section 6.2.5—Boot Replacement](#)).

6. Troubleshooting and Service Procedures



CAUTION: Thread locker applied to fasteners must not be used more than once. Fasteners might become loose and cause equipment damage. Always apply new thread locker when reusing fasteners.

The RCV-490 is designed to provide reliable service for long periods of operation. While simple in design, there are parts in the assembly that are serviceable by the user. The user is encouraged to return the unit to ATI for service. [Section 6.1—Troubleshooting](#) is provided to assist the user when they choose to service the unit in the field.

For all service, it is recommended that the air supply, which is before the solenoid valves in the process, be disconnected. Purge any trapped air pressure in the lines. It is suggested that the air supply be "locked out" to prevent accidental operation of the motor spindle. During maintenance operations, refer to [Section 6.2—Service Procedures](#) for instructions. Service and repair parts are identified in [Section 7—Serviceable Parts](#) and the [RCV Drawing](#).

6.1 Troubleshooting

Deburring process development is an iterative, learning task. The following table is presented to assist in solving deburring problems.


| Table 6.1—Troubleshooting | | |
|---|---------------------------|--|
| Symptom | Cause | Resolution |
| Bur wear | Hard work material | Use better grade burr material add coating (TiAlN) |
| | Too heavy a cut | Decrease width of cut, make multiple passes |
| | Feed rate is too slow | Increase feed rate |
| Bur breakage | Too heavy a cut | Decrease width of cut, make multiple passes |
| | Deflection at corner | Climb mill, do not begin path at sharp corner |
| | Impacting part | Decrease feed rate at contact, enter part at an angle |
| Unequal compliance | Regulator is defective | Replace regulator |
| | Worn ring cylinder | Replace ring cylinder (refer to Section 6.2.3—Ring Cylinder Assembly Replacement) |
| Poor finish on work piece | Feed rate is too fast | Reduce feed rate |
| | Bur is worn | Inspect bur if worn, replace (refer to Section 6.2.1—Bur Replacement) |
| | Motor bearings are worn | Replace air motor (refer to Section 6.2.2—Air Motor Removal and Installation) |
| Bur is chattering during cut | Feed rate is too fast | Reduce feed rate |
| | Lack of rigidity | Increase radial compliance pressure |
| | Too heavy a cut | Decrease width of cut, make multiple passes |
| | Improper bur selection | Choose bur designed for work material |
| | Bur is worn | Inspect bur. If worn, replace (refer to Section 6.2.1—Bur Replacement) |
| | Motor bearings are worn | Replace air motor (refer to Section 6.2.2—Air Motor Removal and Installation) |
| Secondary burrs are created on work piece after cut | Incorrect feed rate | Reduce feed rate |
| | Too heavy a cut | Decrease width of cut, make multiple passes |
| | Improper bur selection | Choose bur designed for work material |
| | Bur is worn | Inspect bur. If worn, replace (refer to Section 6.2.1—Bur Replacement) |
| | Motor bearings are worn | Replace air motor (refer to Section 6.2.2—Air Motor Removal and Installation) |
| Chip packing of bur | Too heavy a cut | Decrease width of cut, make multiple passes |
| | Not enough chip clearance | Use a bur with less flutes |

Table 6.1—Troubleshooting

| Symptom | Cause | Resolution |
|---------------------------|-----------------------------|--|
| Bur stalls | Not enough or no drive air | Verify drive air regulator is operating at 90 psi (6.2 Bar), and check for leaks |
| | Bur is not secure in collet | Properly tighten bur in collet |
| | Too much side load | Decrease width of cut, make multiple passes |
| | Air motor must be replaced | Replace air motor (refer to Section 6.2.2—Air Motor Removal and Installation) |
| Motor spindle is sticking | Motor bearings are worn | Replace air motor (refer to Section 6.2.2—Air Motor Removal and Installation) |

6.2 Service Procedures

Component replacement and adjustment procedures are provided in the following section:

| | |
|---|---|
|  | <p>CAUTION: During operation of the deburring tool, the bur reaches high temperatures. Failure to wear proper personal protection equipment or not allowing the bur to cool could result in serious injury to the user. Be aware that during operation, the bur becomes very hot, and removing the bur, take necessary safety precautions to avoid injury.</p> |
|---|---|

6.2.1 Bur Replacement

In normal operation the bur becomes worn. If improper feeds and speeds are used, the bur may become “loaded” with material. In both instances, replace the bur. During initial production, the bur and the workpiece should be examined often in order to determine when the bur should be replaced. When replacing the same size bur, it's not necessary to replace the collet. When replacing the old bur with a different bur size, the collet must be replaced.

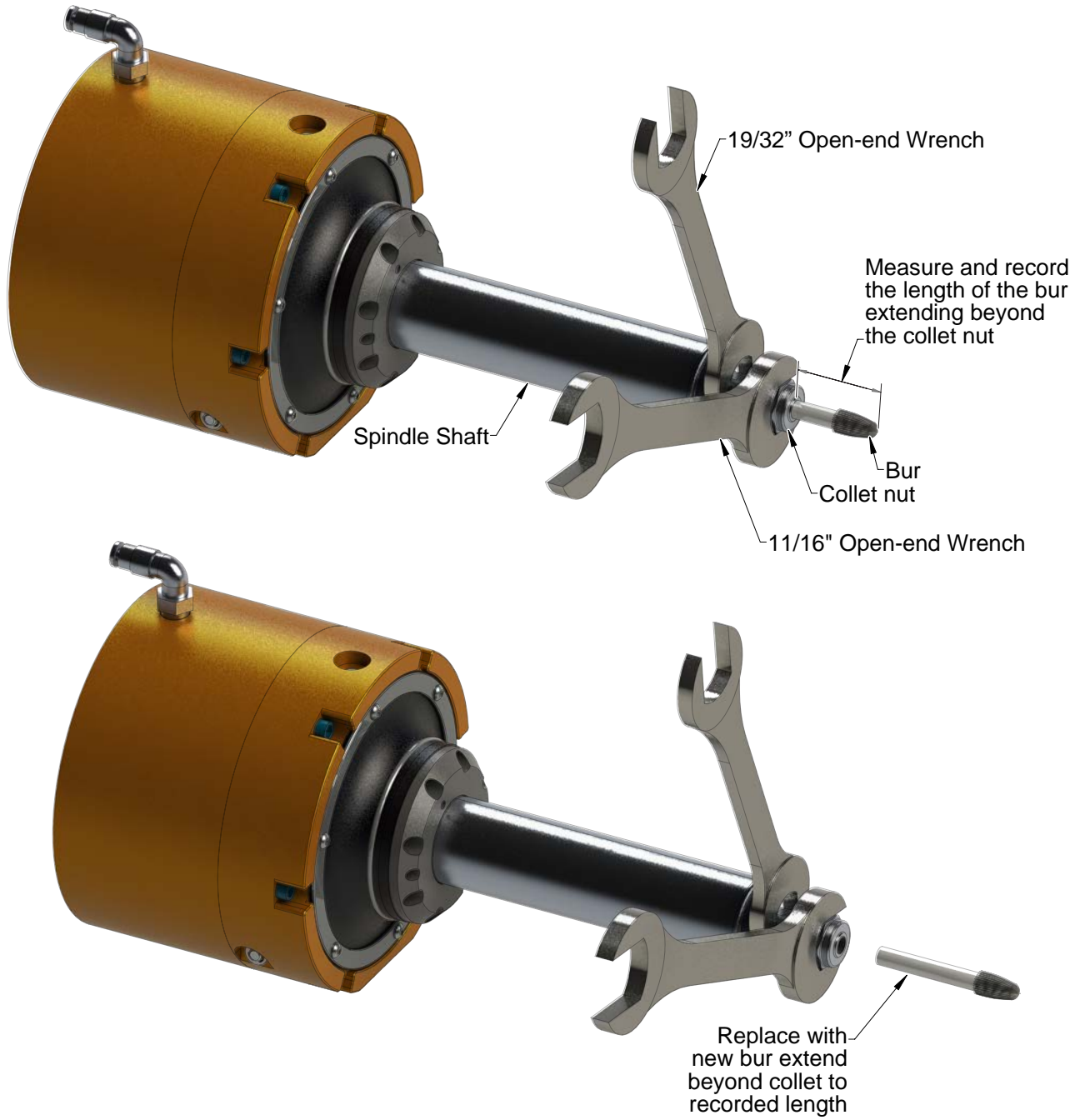
Refer to the following procedure for replacing the bur.

Refer to [Figure 6.1](#).

Tools required: 19/32" open-end wrench, 11/16" open-end wrench

1. Lock-out and remove the spindle motor air supply (De-energize all energized circuits such as: air and power).
2. If the bur is to be replaced with one of an identical type, measure and record the tool length extending beyond the collet lock nut. Alternatively, the optional ATI 9150-RC-T-4230 bur setting tool accessory can be used to duplicate the tool exposure length.
3. Use the 19/32" open-end wrench to hold the body of the collet holder just behind the collet nut.
4. Use the 11/16" open-end wrench to turn the collet locknut counterclockwise (when viewed from the bur tip) to loosen the collet.
5. To remove a worn bur, pull the bur out of the loosened collet by hand.
6. If an identical new bur is replacing a worn one, measure and adjust the length of its exposed portion according to the measurement taken in step 2 of this procedure.
7. Use the 19/32" open-end wrench to hold the body of the collet holder just behind the collet nut.
8. Use the 11/16" open-end wrench to turn the collet locknut clockwise to tighten the collet.
9. Safely resume normal operation.

Figure 6.1—Bur Replacement



6.2.2 Air Motor Removal and Installation

The air motor requires service after an extended operating life or following a collision. RCV-490's with defective motors should be returned to ATI during the warranty period. Should the customer wish to replace the air motor after the warranty period, perform the following procedure:

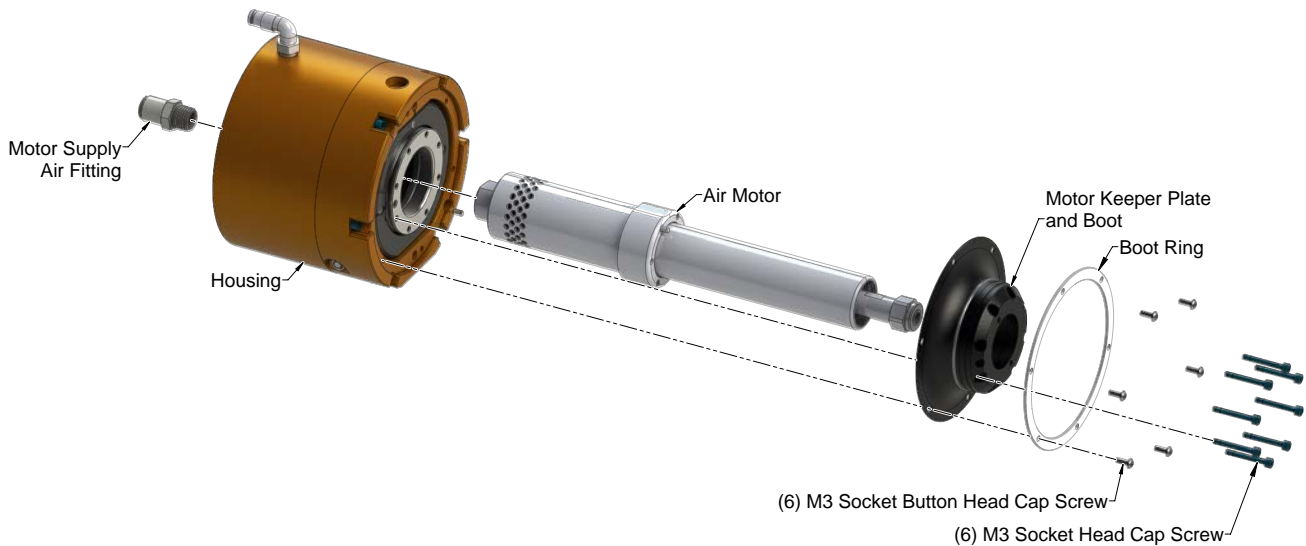
Parts required: Refer to [Section 7—Serviceable Parts](#).

Tools required: 2 mm and 2.5 mm hex key, open-end wrenches, torque wrench

Supplies required: Clean rag, Loctite 222 and 569

1. Lock-out and remove the spindle motor air supply (De-energize all energized circuits such as: air and power).
2. Remove the RCV-490 from the robot or work location.
3. Disconnect hoses from the fittings on the rear of the RCV-490.
4. Remove and retain the air supply fitting from the rear of the motor.
5. Clean the debris from the RCV-490 using compressed air and a clean rag to wipe any grease from the outer surfaces.
6. Remove the boot ring from the housing.
 - a. Using a 2 mm hex key, remove the (6) M3 socket button head cap screws that secure the boot ring to the housing.
7. Loosen the motor keeper plate.
 - a. Using a 2.5 mm hex key, remove the (6) M3 socket head cap screws that secure the motor keeper plate to the housing.
8. Remove the motor keeper plate and boot from the housing.

Figure 6.2—Air Motor Replacement



9. Remove the air motor from the housing.
10. Use a clean rag to remove any oil or debris from the inside of the housing.
11. If rebuilding air motor (refer to 9610-50-1033 RCV Vane Motor Rebuild Manual) If replacing air motor, continue to step [12](#) of this procedure.
12. Install the air motor in the housing.

13. Install the motor keeper plate, boot, and boot ring.
 - a. Align dowels with corresponding dowel holes in air motor, motor keeper plate, and housing.
 - b. Apply Loctite 222 to the (6) M3 socket head cap screws and the (6) M3 socket button head cap screws.
 - c. Using a 2.5 mm hex key, secure the motor keeper plate to the housing with the (6) M3 socket head cap screws.
 - d. Torque the (6) M3 socket head cap screws to 12 in-lbs (1.356 Nm).
 - e. Using a 2 mm hex key, secure the boot ring to the air motor using the (6) M3 socket button head cap screws.
 - f. Torque the (6) M3 socket button head cap screws to contact plus one half turn.
14. Install the air supply fitting in the rear of the air motor.
 - a. Apply Loctite 569 to the threads of fitting.
 - b. Tighten the fitting finger tight plus one half turn.
15. Connect the hoses to the fittings on the rear of the RCV-490.
16. Install the RCV-490 to the robot or work location.
17. Safely resume normal operation.

6.2.3 Ring Cylinder Assembly Replacement

The compliant motion of the air motor spindle is accomplished using an array of pistons (ring cylinder) installed inside the rear of the RCV-490. After extended operation, this component may need to be replaced to ensure free motion of the pistons. The unit is replaced as an assembly. The ring cylinder subcomponents are not user serviceable. To replace the ring cylinder assembly, perform the following procedure:

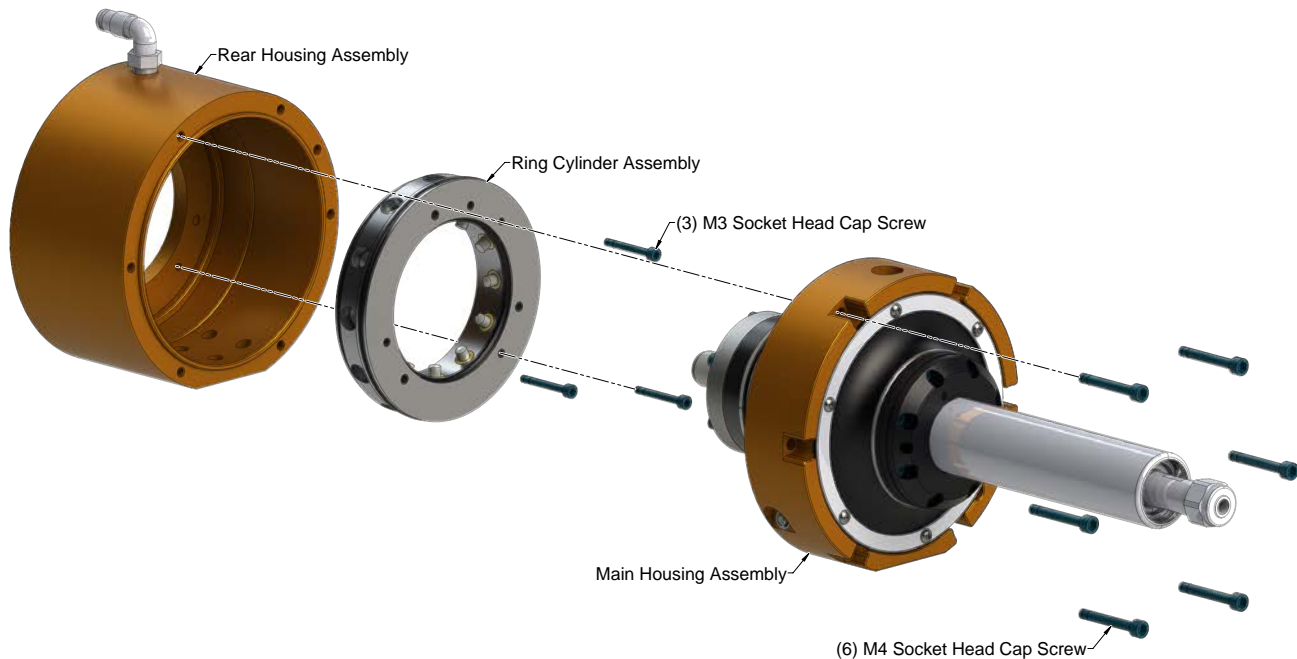
Parts required: Refer to [Section 7—Serviceable Parts](#).

Tools required: 2.5 mm and 3 mm hex keys, torque wrench

Supplies required: Clean rag, Loctite 222, light grease NLGI-2, Magnalube

1. Lock-out and remove the spindle motor air supply (De-energize all energized circuits such as: air and power).
2. Remove the RCV-490 from the robot or work location.
3. Disconnect hoses from the fittings on the rear of the RCV-490.
4. Remove the rear housing assembly.
 - a. Using a 3 mm hex key, remove the (6) M4 socket head cap screws that secure the rear housing assembly to the main housing.
5. Remove the ring cylinder assembly.
 - a. Using a 2.5 mm hex key, remove the (3) M3 socket head cap screws that secure the ring cylinder to the rear housing.
 - b. Move those (3) M3 socket head cap screws, which were removed in previous step, to the tapped holes in the ring cylinder and tighten them slowly. The screws will push the ring cylinder assembly away from the rear housing so it can be removed.

Figure 6.3—Ring Cylinder Replacement



6. Install the new ring cylinder assembly.
 - a. Use light grease (NLGI-2) to lubricate the bores in the entrance to the rear housing assembly and the O-rings in the new ring cylinder assembly.
 - b. Locate the alignment mark hole on the ring cylinder and align it with the drill point on the rear housing.
 - c. Insert the ring cylinder slowly by hand while maintaining the orientation of the alignment marks.
 - d. Using a 2.5 mm hex key, secure the new ring cylinder assembly to the front housing assembly with the (3) M3 socket head cap screws. Tighten them to 12 in-lbs (1.356 Nm).
7. Install the rear housing assembly.
 - a. Install the rear housing assembly to the main housing assembly.
 - b. Using a 3 mm hex key, secure the rear housing assembly to the front housing assembly with the (6) M4 socket head cap screws. Tighten to 25 in-lbs (2.825 Nm).
8. Connect the hoses to the fittings on the rear of the RCV-490.
9. Install the RCV-490 to the robot or work location.
10. Safely resume normal operation.

6.2.4 Muffler Replacement

To replace the muffler, perform the following procedure:

Refer to [Figure 6.4](#).

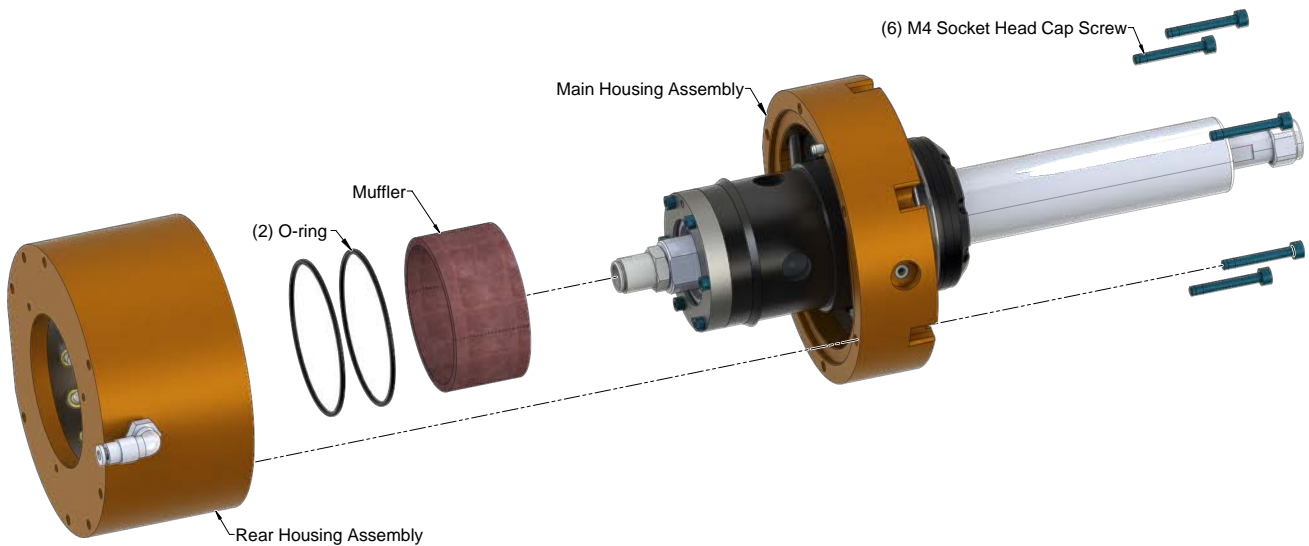
Parts required: Refer to [Section 7—Serviceable Parts](#).

Tools required: 2.5 mm hex key, 24 mm (15/16") open-end wrench, long pliers or tweezers, 3 mm (1/8") pin, torque wrench

Supplies required: Clean rag, Loctite 222

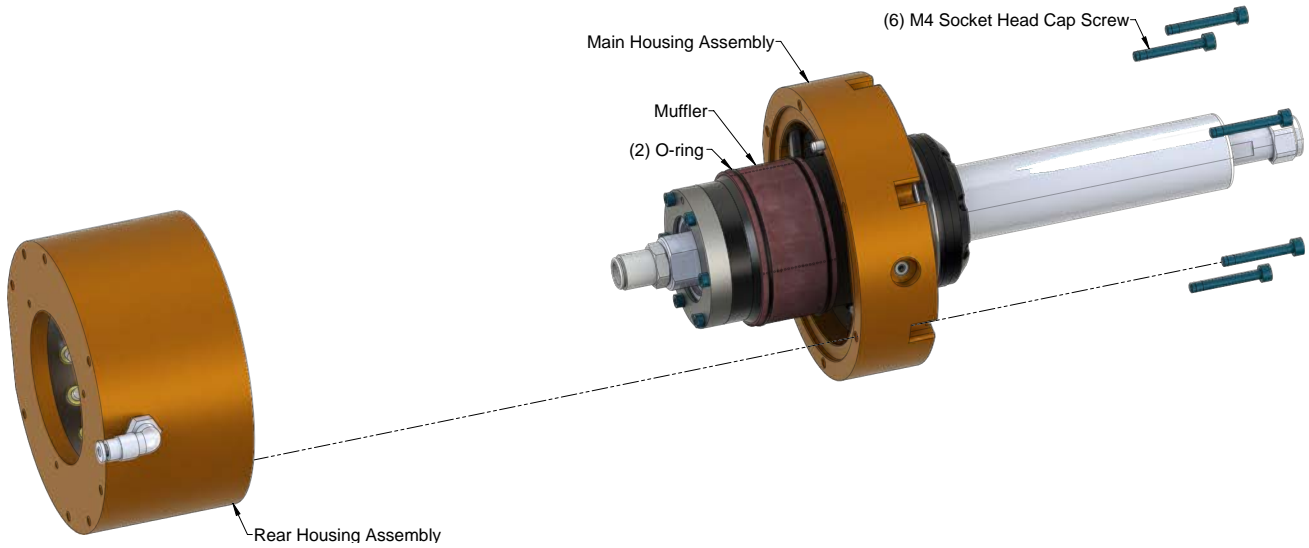
1. Lock-out and remove the spindle motor air supply (De-energize all energized circuits such as: air and power).
2. Remove the RCV-490 from the robot or work location.
3. Disconnect hoses from the fittings on the rear of the RCV-490.
4. Remove the rear housing assembly.
 - a. Using a 3 mm hex key, remove the (6) M4 socket head cap screws that secure the rear housing assembly to the main housing.
5. Remove the muffler.
 - a. Remove the (2) O-rings that secure the muffler in place.
 - b. Remove the muffler from the main housing.

Figure 6.4—Muffler Removal



6. Install the muffler.
 - a. Install the (2) O-rings to secure the muffler in place.

Figure 6.5—Muffler Installation



7. Install the rear housing assembly.
 - a. Using a 3 mm hex key, secure the rear housing assembly to the front housing assembly with the (6) M4 socket head cap screws. Tighten to 25 in-lbs (2.825 Nm).
8. Connect the hoses to the fittings on the rear of the RCV-490.
9. Install the RCV-490 to the robot or work location.
10. Safely resume normal operation.

6.2.5 Boot Replacement

The boot prevents debris from entering the housing and protects internal components. Replace the boot if it shows signs of damage (refer to [Figure 6.6](#)).

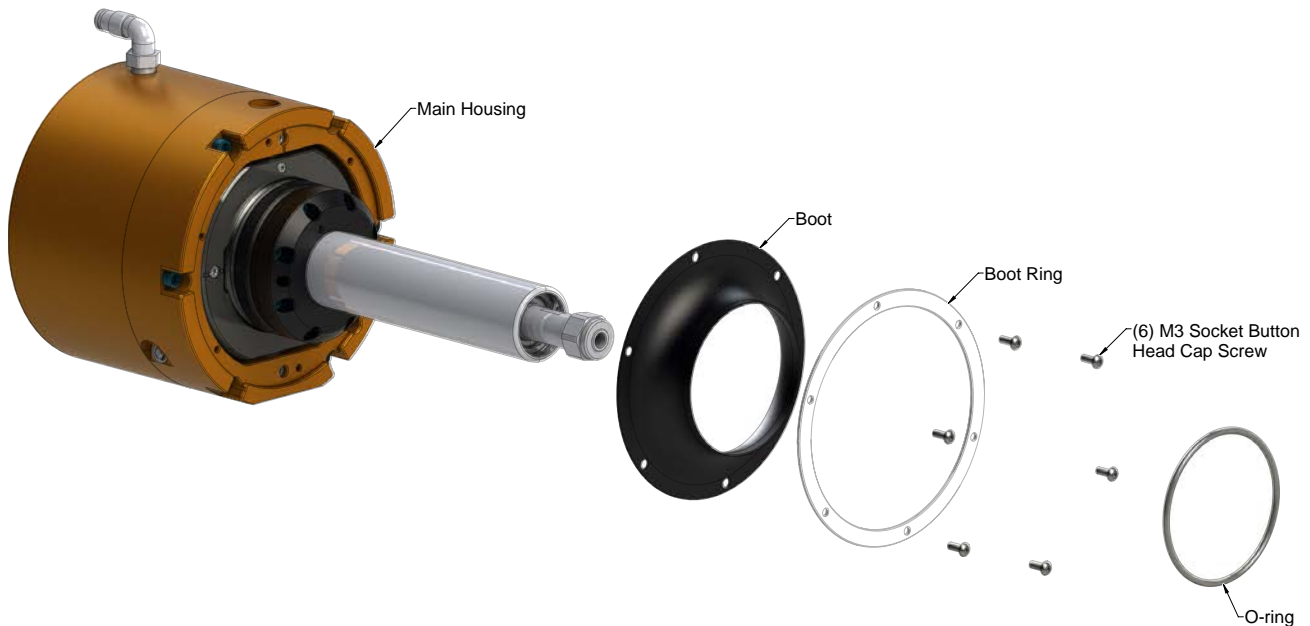
Parts required: Refer to [Section 7—Serviceable Parts](#).

Tools required: 2 mm hex key, torque wrench

Supplies required: Clean rag, Loctite 222

1. Lock-out and remove the spindle motor air supply (De-energize all energized circuits such as: air and power).
2. Remove the RCV-490 from the robot or work location.
3. Clean debris from the RCV-490 using compressed air and a clean rag to wipe any grease from the outer surfaces.
4. Ease the O-ring off the spindle.
5. Using a 2 mm hex key, remove the (6) M3 socket button head cap screws that secure the boot ring to the housing.
6. Remove the boot ring and boot.
7. Align the boot ring and boot with the holes in the housing and slide the boot onto the spindle. Align the edge of the boot to the edge of the contact surface.
8. Apply Loctite 222 to the threads of the (6) M3 socket button head cap screws.
9. Using a 2 mm hex key, install the (6) M3 socket button head cap screws that secure the boot to the housing. Tighten to contact plus one half turn.
10. Stretch the O-ring over the boot.
11. Install the RCV-490 to the robot or work location.
12. Safely resume normal operation.

Figure 6.6—Spindle Boot Replacement



7. Serviceable Parts

The serviceable parts for the 9150-RCV-490 are in the following table:

| Qty | Part Number | Description |
|-----|-----------------|---|
| 1 | 3490-0001077-01 | Vane Motor, 496 Watts, 30,000 rpm |
| 1 | 9005-50-6061 | Ring Cylinder Assembly, RCV-490 |
| 1 | 3700-50-9042 | Muffler Strip, Scotchbrite, RCV-490 |
| 2 | 3410-0001025-01 | O-Ring AS568-034 Buna-N D70 (for muffler) |
| 1 | 3700-50-9039 | Front Boot, RCV-490, Viton |

7.1 Accessories

| Qty | Part Number | Description |
|-----|----------------|--|
| - | Burs | Refer to Table 4.1 for bur part numbers and descriptions |
| 1 | 3710-50-1470 | Wrench, 19/32" |
| 1 | 3710-50-1471 | Wrench, 11/16" |
| 1 | 3710-50-1466 | Collet Nut, RCV-490 |
| 1 | 9005-50-6174 | FRL Unit with Oil Level Switch |
| 1 | 9005-50-6164 | Air Pressure Regulator |
| 1 | 9150-RC-T-4230 | Bur Setting Fixture (not shown) |
| 1 | 9005-50-6159 | Interface Plate Kit |

8. Specifications

| Parameter | Rating |
|---|---|
| Motor | Pneumatic Vane-Type |
| Idle Speed (RPM) | 30,000 |
| Working Speed (RPM) | 15,000 (Approximate) |
| Torque (Max. Power) | 1.4 in-lbs (0.16 Nm) |
| Power | 0.66 hp (490 Watts) |
| Weight (without Adapters) | 7.4 lb (3.36 kg) |
| Compensation (Radial) | +/- .325" (8 mm) |
| Compliance Force (Measured at Collet) | 1.5-12 lb (6.7-53.4 N) |
| Burr Surface Speed | Dependent on application |
| Spindle Air Pressure | 90 psi (6.2 Bar) |
| Air Consumption (Max.) | Approximately 14-19 l/s (30-40 CFM) |
| Collet Size, Standard¹ | 1/4" (6 mm & 8 mm Supplied on Euro Models) |
| Abrasive Media | Customer-Supplied |
| Rotary Burrs ² | Commercial Units Rated 30,000 RPM or Higher |
| Notes: | |
| <ol style="list-style-type: none"> 1. Optional sizes are available (refer to Section 7—Serviceable Parts) 2. ATI can supply burs (refer to Section 4.5.1—Bur Selection) | |

9. Terms and Conditions of Sale

The following Terms and Conditions are a supplement to and include a portion of ATI's Standard Terms and Conditions, which are on file at ATI and available upon request.

ATI warrants the compliant tool product will be free from defects in design, materials, and workmanship for a period of one (1) year from the date of shipment and only when used in compliance with the manufacturer's specified normal operating conditions. This warranty does not extend to tool components that are subject to wear and tear under normal usage; including but not limited to those components that require replacement at standard service intervals. The warranty period for repairs made under a RMA shall be for the duration of the original warranty, or ninety (90) days from the date of repaired product shipment, whichever is longer. This warranty is void if the unit is not used in accordance with guidelines that are presented in this document. ATI will have no liability under this warranty unless: (a) ATI is given written notice of the claimed defect and a description thereof within thirty (30) days after the Purchaser discovers the defect and in any event not later than the last day of the warranty period; and (b) the defective item is received by ATI no later than ten (10) days after the last day of the warranty period. ATI's entire liability and Purchaser's sole remedy under this warranty is limited to repair or replacement, at ATI's election, of the defective part or item or, at ATI's election, refund of the price paid for the item. The foregoing warranty does not apply to any defect or failure resulting from improper installation, operation, maintenance, or repair by anyone other than ATI.

ATI will in no event be liable for incidental, consequential or special damages of any kind, even if ATI has been advised of the possibility of such damages. ATI's aggregate liability will in no event exceed the amount paid by purchaser for the item which is the subject of claim or dispute. ATI will have no liability of any kind for failure of any equipment or other items not supplied by ATI.

No action against ATI, regardless of form, arising out of or in any way connected with products or services supplied hereunder may be brought more than one (1) year after the cause of action occurred.

No representation or agreement varying or extending the warranty and limitation of remedy provisions contained herein is authorized by ATI, and may not be relied upon as having been authorized by ATI, unless in writing and signed by an executive officer of ATI.

Unless otherwise agreed in writing by ATI, all designs, drawings, data, inventions, software and other technology made or developed by ATI in the course of providing products and services hereunder, and all rights therein under any patent, copyright or other law protecting intellectual property, shall be and remain ATI's property. The sale of products or services hereunder does not convey any express or implied license under any patent, copyright or other intellectual property right owned or controlled by ATI, whether relating to the products sold or any other matter, except for the license expressly granted below.

In the course of supplying products and services hereunder, ATI may provide or disclose to Purchaser confidential and proprietary information of ATI relating to the design, operation or other aspects of ATI's products. As between ATI and Purchaser, ownership of such information, including without limitation any computer software provided to Purchaser by ATI, shall remain in ATI and such information is licensed to Purchaser only for Purchaser's use in operating the products supplied by ATI hereunder in Purchaser's internal business operations.

Without ATI's prior written permission, Purchaser will not use such information for any other purpose or provide or otherwise make such information available to any third party. Purchaser agrees to take all reasonable precautions to prevent any unauthorized use or disclosure of such information.

Purchaser will not be liable hereunder with respect to disclosure or use of information which: (a) is in the public domain when received from ATI; (b) is thereafter published or otherwise enters the public domain through no fault of Purchaser; (c) is in Purchaser's possession prior to receipt from ATI; (d) is lawfully obtained by Purchaser from a third party entitled to disclose it; or (f) is required to be disclosed by judicial order or other governmental authority, provided that, with respect to such required disclosures, Purchaser gives ATI prior notice thereof and uses all legally available means to maintain the confidentiality of such information.

9.1 Motor Life and Service Interval Statement

The air motors that are used in ATI deburring/finishing tools are subject to wear and have a finite life. Motors that fail, during the warranty period, will be repaired or replaced by ATI as long as there is no evidence of abuse or neglect and that the normal operating practices outlined in this manual have been observed.

Components such as: motor vanes, bearings, any gear reduction components, and collet nuts/chucks are considered consumable and are not covered by warranty. The customer should expect to service or replace these items at designated service intervals. For any part this is not detailed in this manual, contact ATI for part numbers and pricing.

Premature bearing failure can occur from exposing the deburring tool to coolants and water or impacts from collisions. Other failure modes that are outlined in the manual and relate to improper machining practices and deburring media selection.

9.1.1 Vane Motor Products

Vane type motors have a finite life and require regular service. At that time the customer should expect to replace the bearings and motor vanes. Any gear reduction components should also be inspected and replaced as necessary. Vane type motors perform best and longest when supplied with lubricated air. The service interval will be catastrophically shortened if the tool is ran without lubrication. The expected life of a properly lubricated vane motor in normal operation is entirely application dependent based on a multitude of factors. To maximize the life of a vane type motor products the customer should follow closely the normal operation guide in the product manual. The supplied air must be lubricated, and filtered to remove particulates and moisture. Premature bearing failure can occur from exposing the deburring tool to coolants and water or impacts from collisions. Other failure modes are outlined in the manual and relate to improper machining practices and deburring media selection.