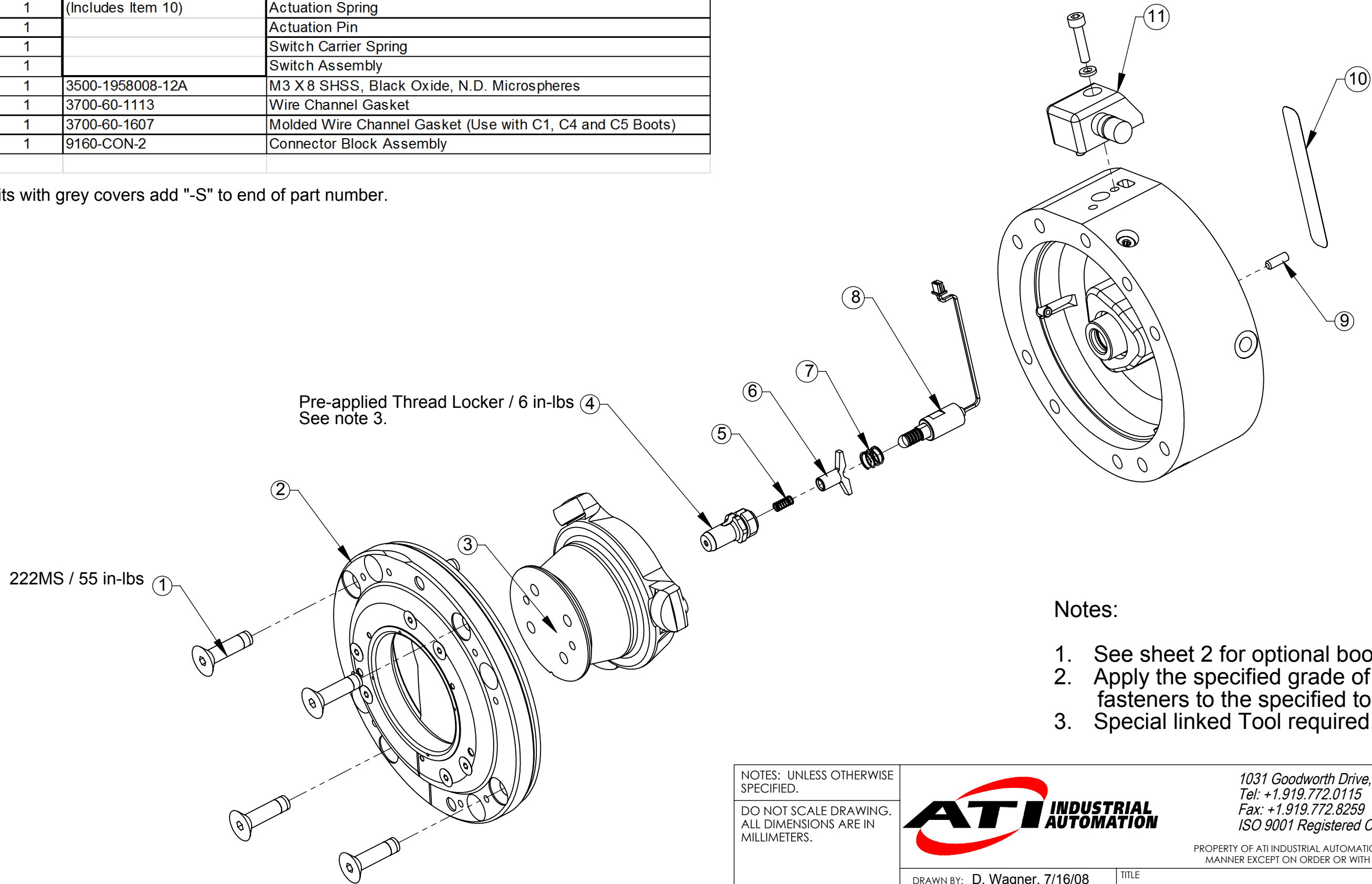


ITEM NO.	QTY.	PART NO.	DESCRIPTION
1	4	3500-1264020-15	M5 x 20mm SFHCS
2	1	9160-STEMCOVKIT-2-101*	Cover Plate Sub-assembly
3	1	(Includes Item 1)	Stem Sub-assembly
4	1	9160-SWITCHKIT-101	Actuation Pin Housing
5	1	(Includes Item 10)	Actuation Spring
6	1		Actuation Pin
7	1		Switch Carrier Spring
8	1		Switch Assembly
9	1	3500-1958008-12A	M3 X8 SHSS, Black Oxide, N.D. Microspheres
10	1	3700-60-1113	Wire Channel Gasket
	1	3700-60-1607	Molded Wire Channel Gasket (Use with C1, C4 and C5 Boots)
11	1	9160-CON-2	Connector Block Assembly

Rev.	Description	Initiator	Date
05	ECO 16303: Changed 3500-1964010-15 to 3700-60-1923 in assembly model. Removed Revision block from Sheet 2.	TBC	2/19/2018

\* For units with grey covers add "-S" to end of part number.



**Notes:**

1. See sheet 2 for optional boots and shields.
2. Apply the specified grade of Loctite / tighten fasteners to the specified torque.
3. Special linked Tool required.

NOTES: UNLESS OTHERWISE SPECIFIED.

DO NOT SCALE DRAWING. ALL DIMENSIONS ARE IN MILLIMETERS.



3rd ANGLE PROJECTION



1031 Goodworth Drive, Apex, NC 27539, USA  
 Tel: +1.919.772.0115 Email: info@ati-ia.com  
 Fax: +1.919.772.8259 www.ati-ia.com  
 ISO 9001 Registered Company

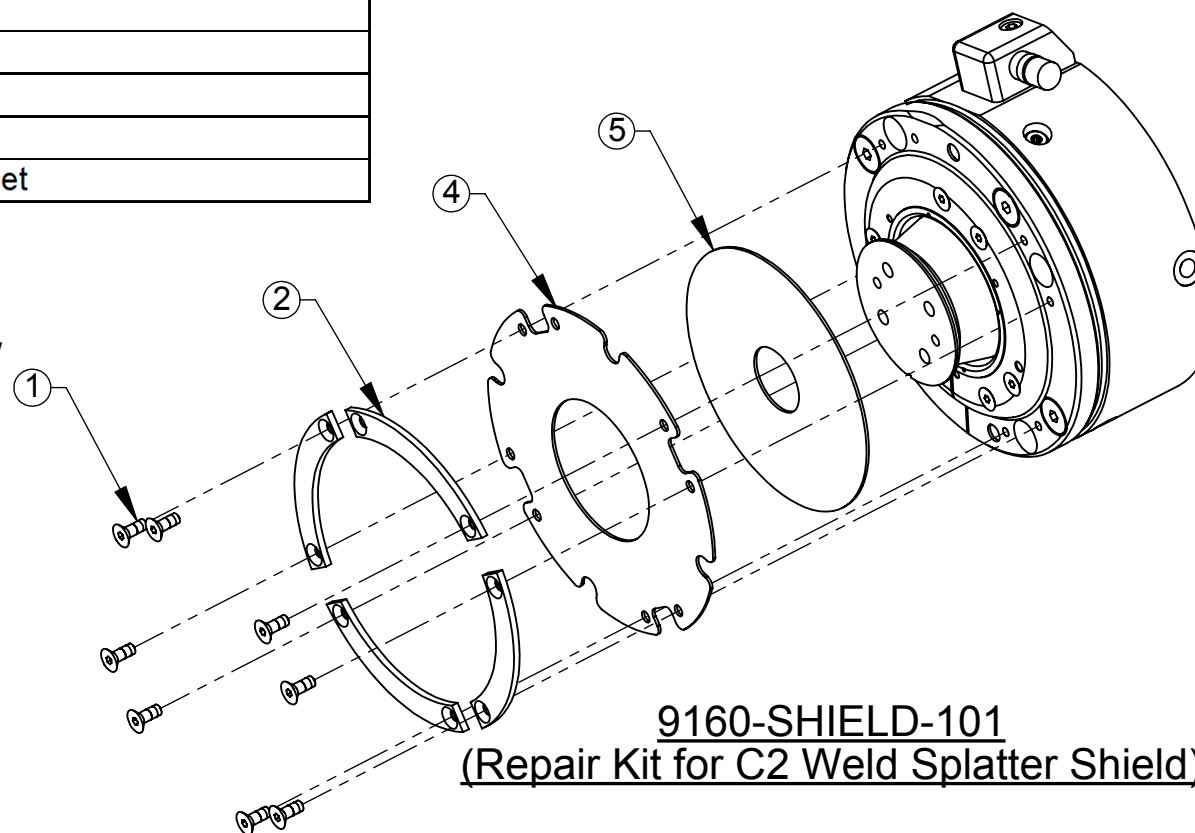
PROPERTY OF ATI INDUSTRIAL AUTOMATION, INC. NOT TO BE REPRODUCED IN ANY MANNER EXCEPT ON ORDER OR WITH PRIOR WRITTEN AUTHORIZATION OF ATI.

DRAWN BY: D. Wagner, 7/16/08		TITLE	
CHECKED BY: W.Berrocal 7/16/08		SR-101 Collision Sensor Assembly	
PROJECT #	070517-2 SHEET 1 OF 2	SCALE	3:4
SIZE	B	DRAWING NUMBER	9230-60-1139
			REVISION
			05

ITEM NO.	QTY.	PART NO.	DESCRIPTION
1	8	NSS	M3 x 8 SFHCS, Metric Blue, Microspheres Epoxy
2	4	NSS	Boot Retainer
3	1	3700-60-1263	Boot
4	1	NSS	Weld Splatter Shield
5	1	NSS	EDPD Rubber Seal
6	2	NSS	Garter Spring
7	1	3700-60-1558	Flexible Boot
8	1	3700-60-1607	Molded Wire Channel Gasket

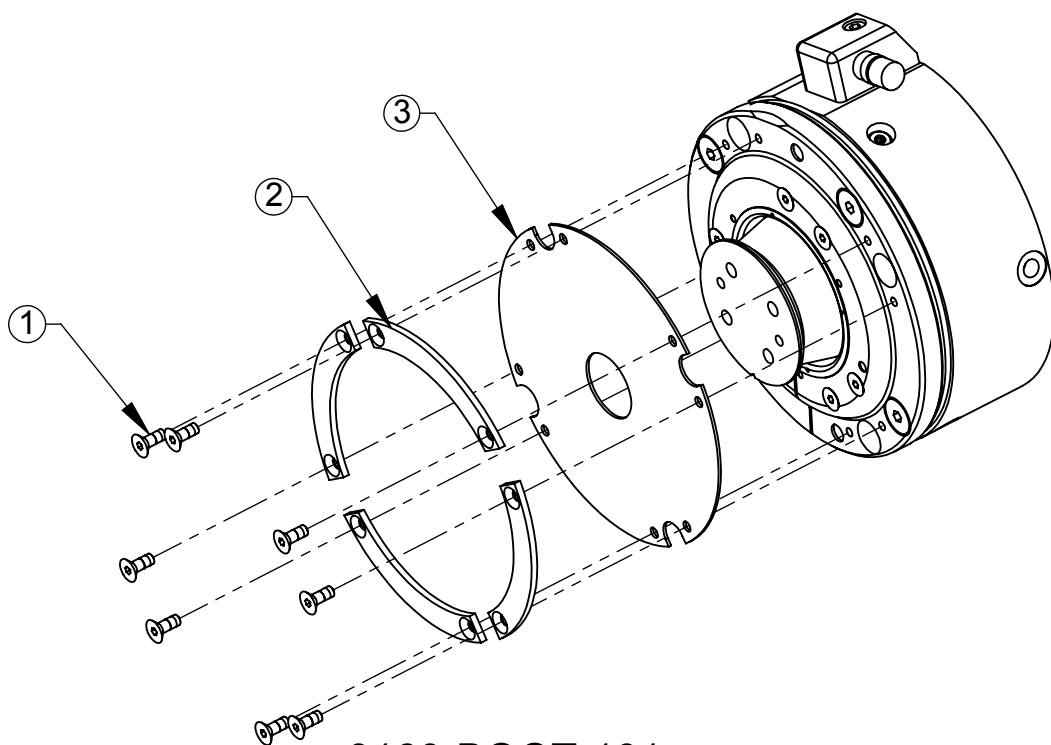
NSS - Not sold separately - purchase the appropriate repair kit.

Preapplied /  
32 in-ozs

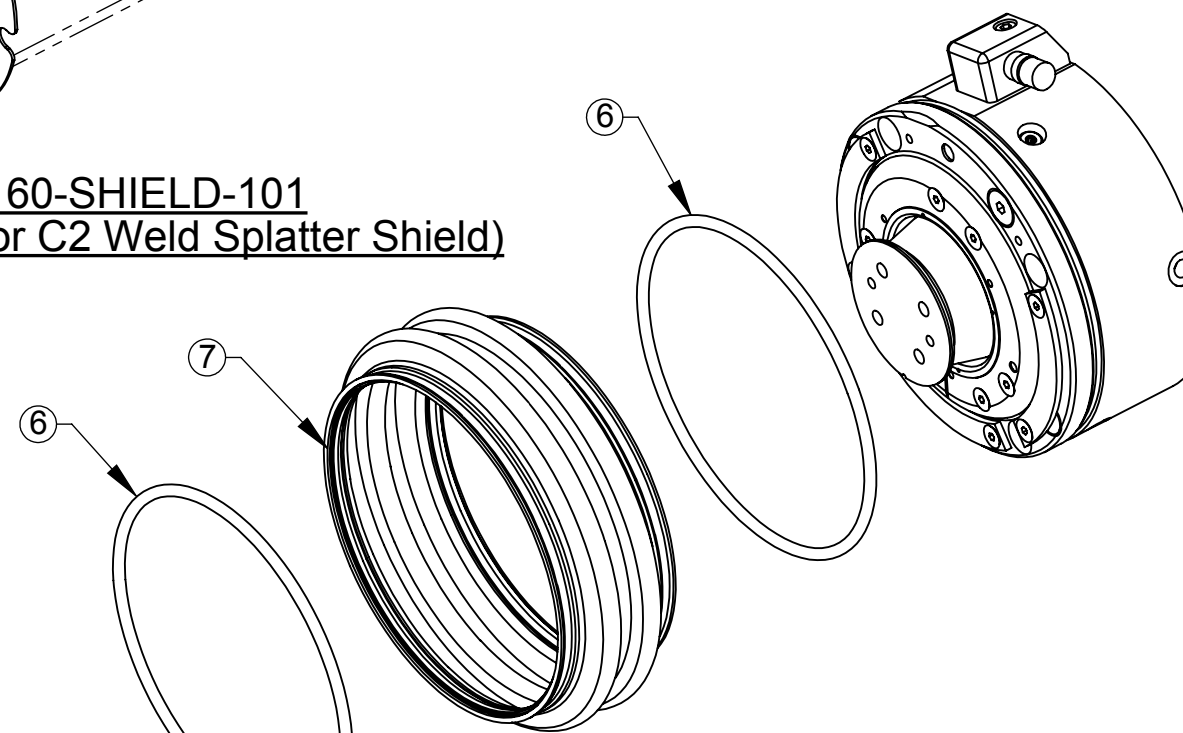


**9160-SHIELD-101**  
**(Repair Kit for C2 Weld Splatter Shield)**

Preapplied /  
32 in-ozs



**9160-BOOT-101**  
**(Repair Kit for C1 - IP65 Boot)**



**9160-FLEXBOOT-101**  
**(Repair Kit for C5 Coolant Protection Boot)**

NOTES: UNLESS OTHERWISE SPECIFIED.

DO NOT SCALE DRAWING.  
ALL DIMENSIONS ARE IN  
MILLIMETERS.



3rd ANGLE PROJECTION



1031 Goodworth Drive, Apex, NC 27539, USA  
Tel: +1.919.772.0115 Email: info@ati-ia.com  
Fax: +1.919.772.8259 www.ati-ia.com  
ISO 9001 Registered Company

PROPERTY OF ATI INDUSTRIAL AUTOMATION, INC. NOT TO BE REPRODUCED IN ANY MANNER EXCEPT ON ORDER OR WITH PRIOR WRITTEN AUTHORIZATION OF ATI.

DRAWN BY: D. Wagner, 7/16/08

CHECKED BY: W.Berrocal 7/16/08

PROJECT # 070517-2 SHEET 2 OF 2

TITLE

SR-101 Collision Sensor Assembly

SCALE  
1:2

SIZE  
B

DRAWING NUMBER  
9230-60-1139

REVISION  
05