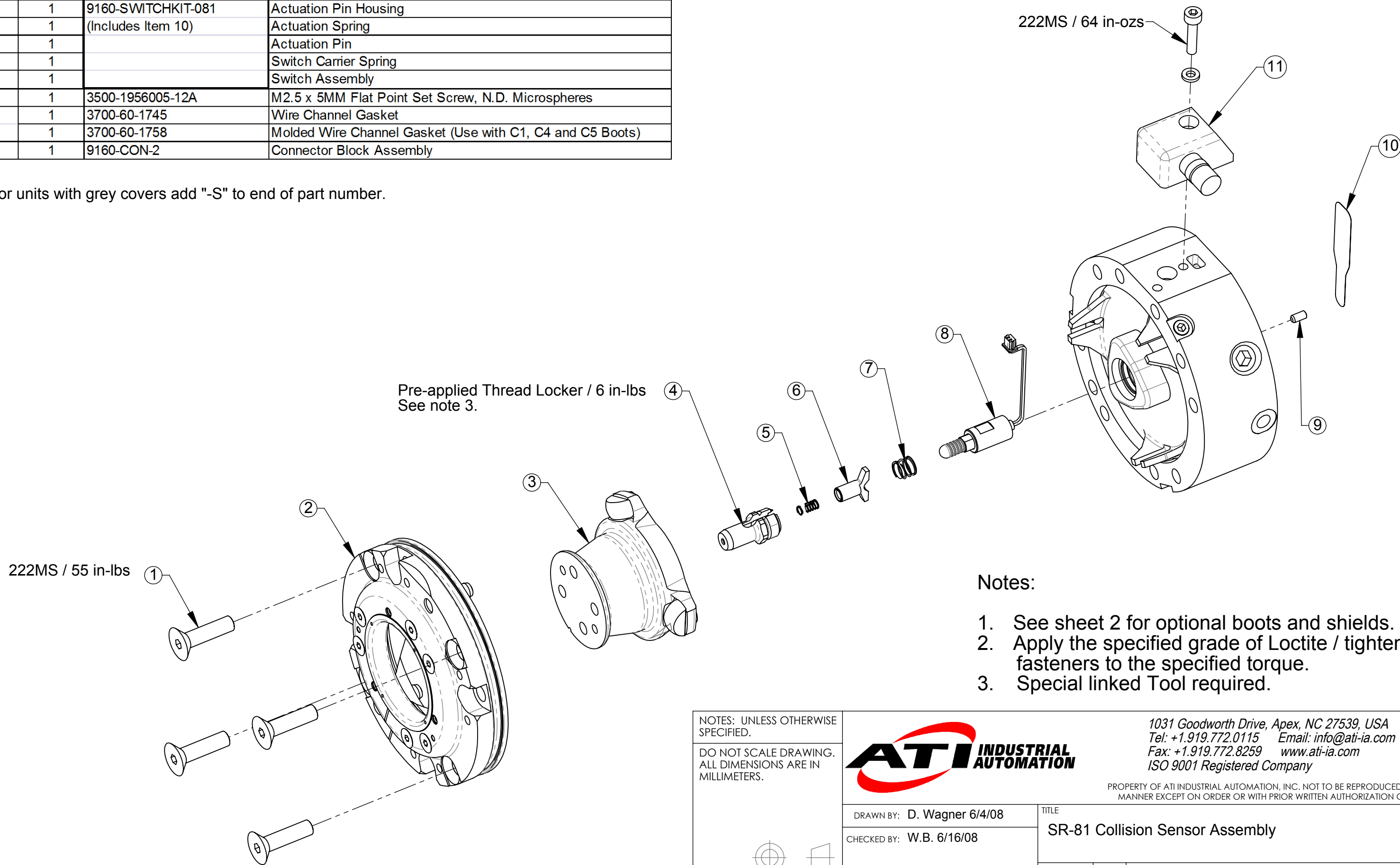


ITEM NO.	QTY.	PART NO.	DESCRIPTION
1	4	3500-1264020-15	M5 x 20mm SFHCS
2	1	9160-STEMCOVKIT-2-081*	Cover Plate Sub-assembly
3	1	(Includes Item 1)	Stem Sub-assembly
4	1	9160-SWITCHKIT-081	Actuation Pin Housing
5	1	(Includes Item 10)	Actuation Spring
6	1		Actuation Pin
7	1		Switch Carrier Spring
8	1		Switch Assembly
9	1	3500-1956005-12A	M2.5 x 5MM Flat Point Set Screw, N.D. Microspheres
10	1	3700-60-1745	Wire Channel Gasket
	1	3700-60-1758	Molded Wire Channel Gasket (Use with C1, C4 and C5 Boots)
11	1	9160-CON-2	Connector Block Assembly

Rev.	Description	Initiator	Date
03	ECO 16274: Replaced 9160-CON-1 with 9160-CON-2. Removed ** Units with grey covers use 9160-CON-2. note. Removed 3810-60-1489 tool & sent to Tooling Tab. Removed Revision block from Sheet 2.	TBC	12/19/2017

\* For units with grey covers add "-S" to end of part number.

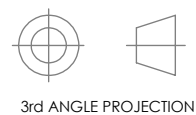


Notes:

1. See sheet 2 for optional boots and shields.
2. Apply the specified grade of Loctite / tighten fasteners to the specified torque.
3. Special linked Tool required.

NOTES: UNLESS OTHERWISE SPECIFIED.

DO NOT SCALE DRAWING. ALL DIMENSIONS ARE IN MILLIMETERS.



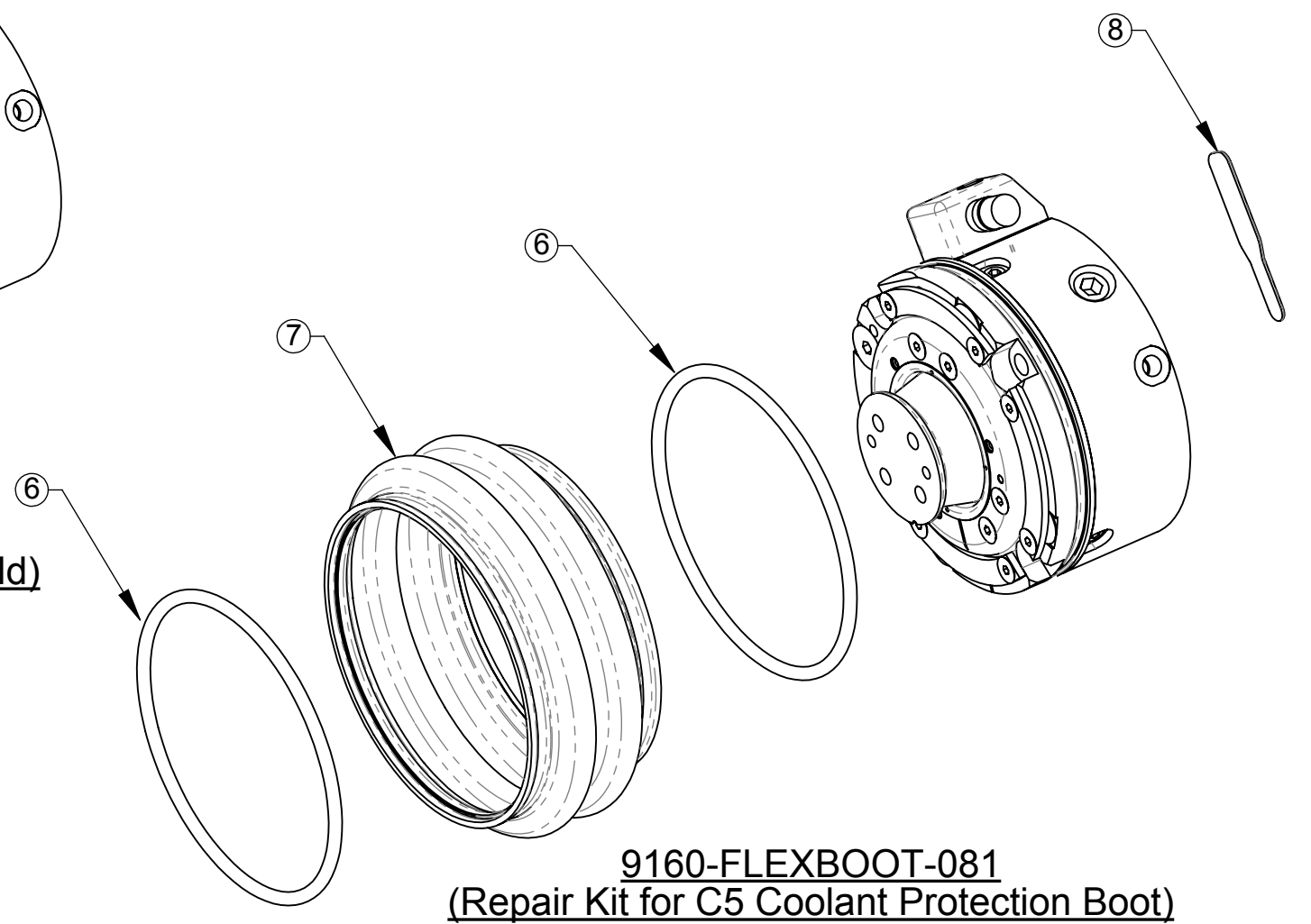
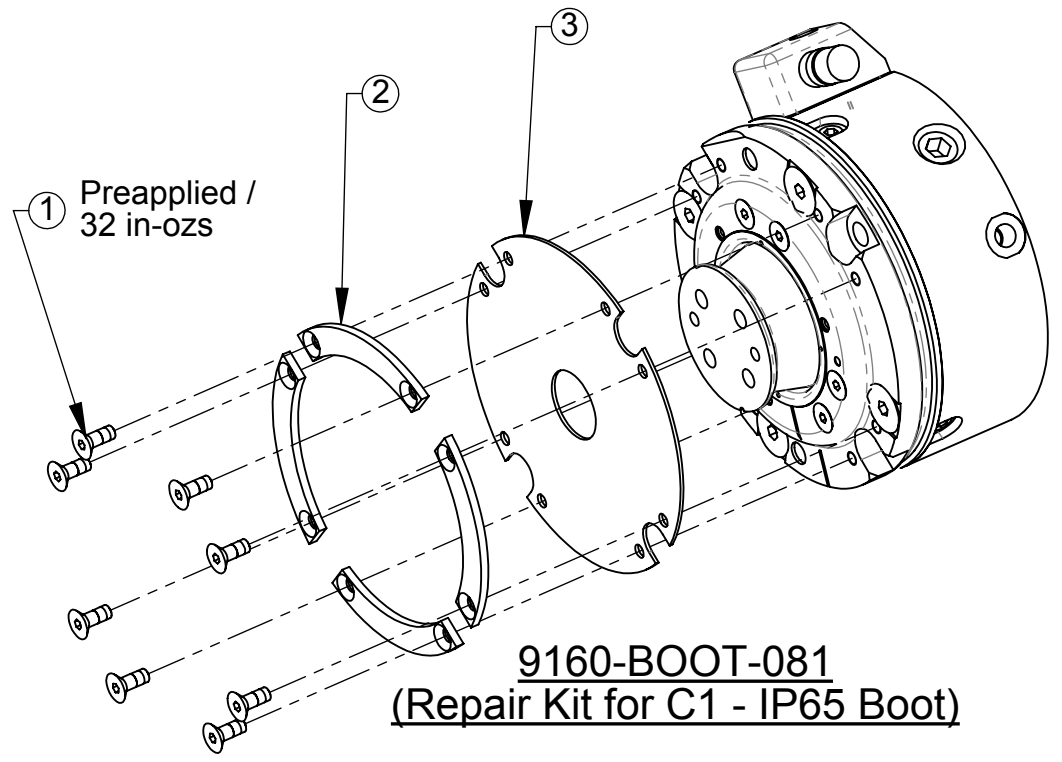
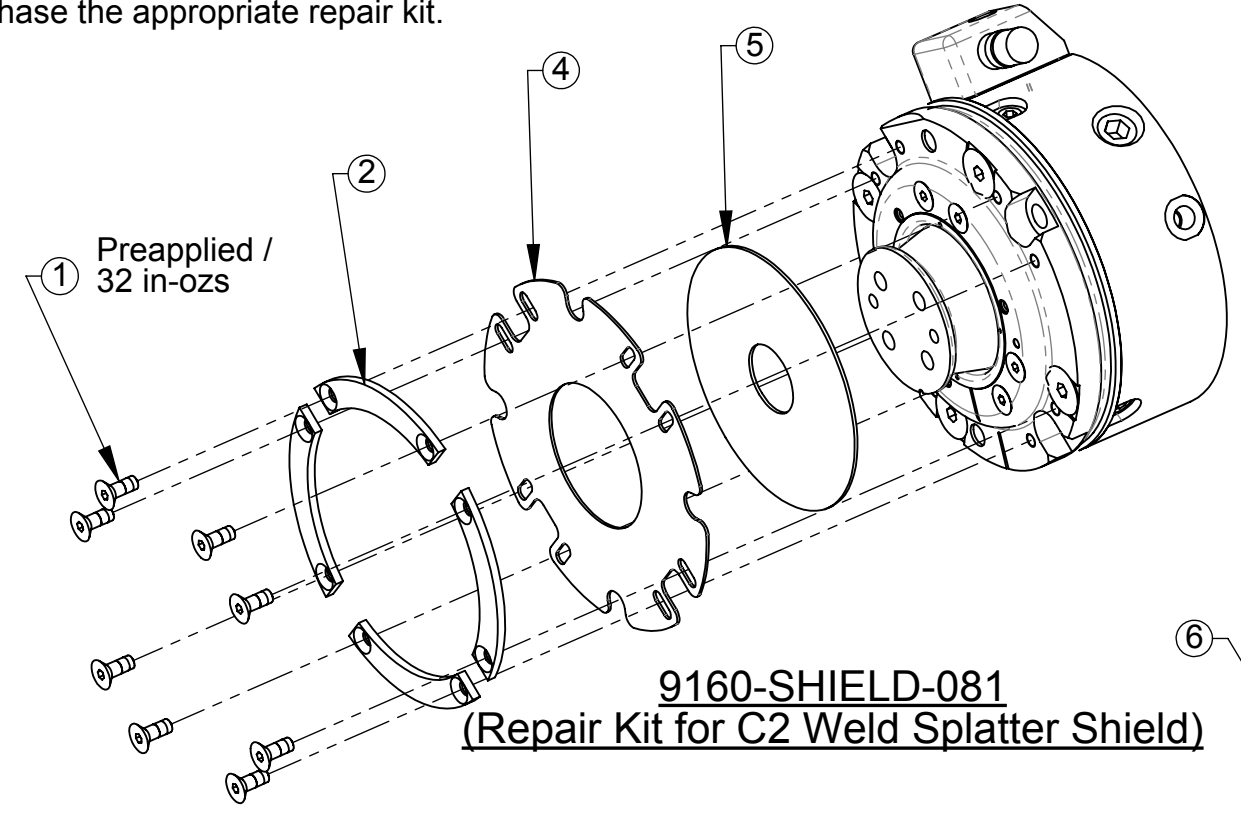
1031 Goodworth Drive, Apex, NC 27539, USA  
 Tel: +1.919.772.0115 Email: info@ati-ia.com  
 Fax: +1.919.772.8259 www.ati-ia.com  
 ISO 9001 Registered Company

PROPERTY OF ATI INDUSTRIAL AUTOMATION, INC. NOT TO BE REPRODUCED IN ANY MANNER EXCEPT ON ORDER OR WITH PRIOR WRITTEN AUTHORIZATION OF ATI.

DRAWN BY: D. Wagner 6/4/08		TITLE	
CHECKED BY: W.B. 6/16/08		SR-81 Collision Sensor Assembly	
PROJECT #	070517-2	SHEET	1 OF 2
SCALE	7:8	SIZE	B
DRAWING NUMBER	9230-60-1136	REVISION	03

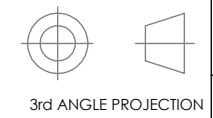
ITEM NO.	QTY.	PART NO.	DESCRIPTION
1	8	NSS	M3 x 8 SFHCS, Metric Blue, Microspheres Epoxy
2	4	NSS	Boot Retainer
3	1	3700-60-1099	Boot
4	1	NSS	Weld Splatter Shield
5	1	NSS	EDPD Rubber Seal
6	2	NSS	Garter Spring
7	1	3700-60-1548	Flexible Boot
8	1	3700-60-1758	Molded Wire Channel Gasket

NSS - Not sold separately - purchase the appropriate repair kit.



NOTES: UNLESS OTHERWISE SPECIFIED.

DO NOT SCALE DRAWING. ALL DIMENSIONS ARE IN MILLIMETERS.



1031 Goodworth Drive, Apex, NC 27539, USA  
 Tel: +1.919.772.0115 Email: info@ati-ia.com  
 Fax: +1.919.772.8259 www.ati-ia.com  
 ISO 9001 Registered Company

PROPERTY OF ATI INDUSTRIAL AUTOMATION, INC. NOT TO BE REPRODUCED IN ANY MANNER EXCEPT ON ORDER OR WITH PRIOR WRITTEN AUTHORIZATION OF ATI.

DRAWN BY: D. Wagner 6/4/08		TITLE	
CHECKED BY: W.B. 6/16/08		SR-81 Collision Sensor Assembly	
PROJECT # 070517-2	SHEET 2 OF 2	SCALE 5:8	SIZE B
		DRAWING NUMBER 9230-60-1136	REVISION 03