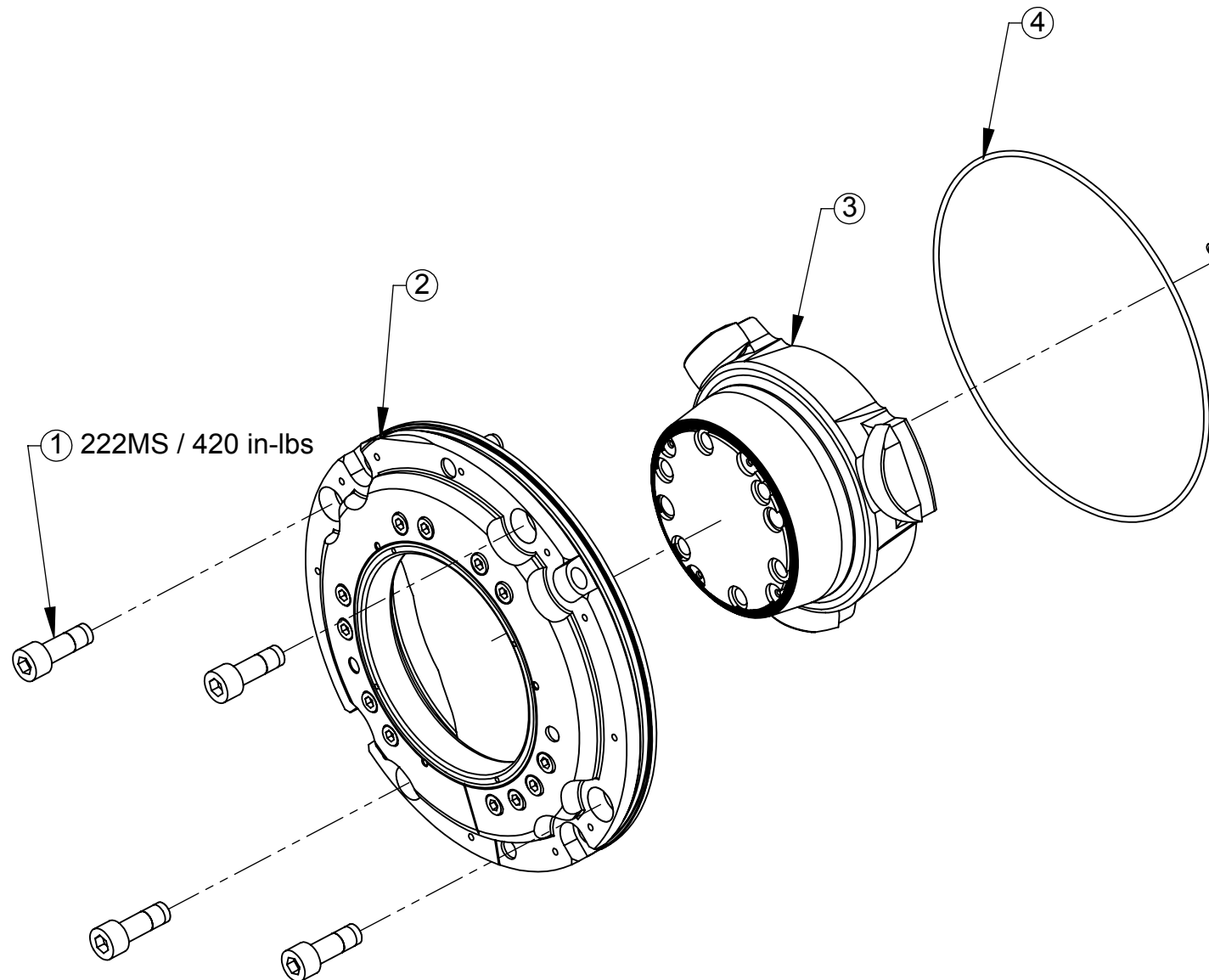
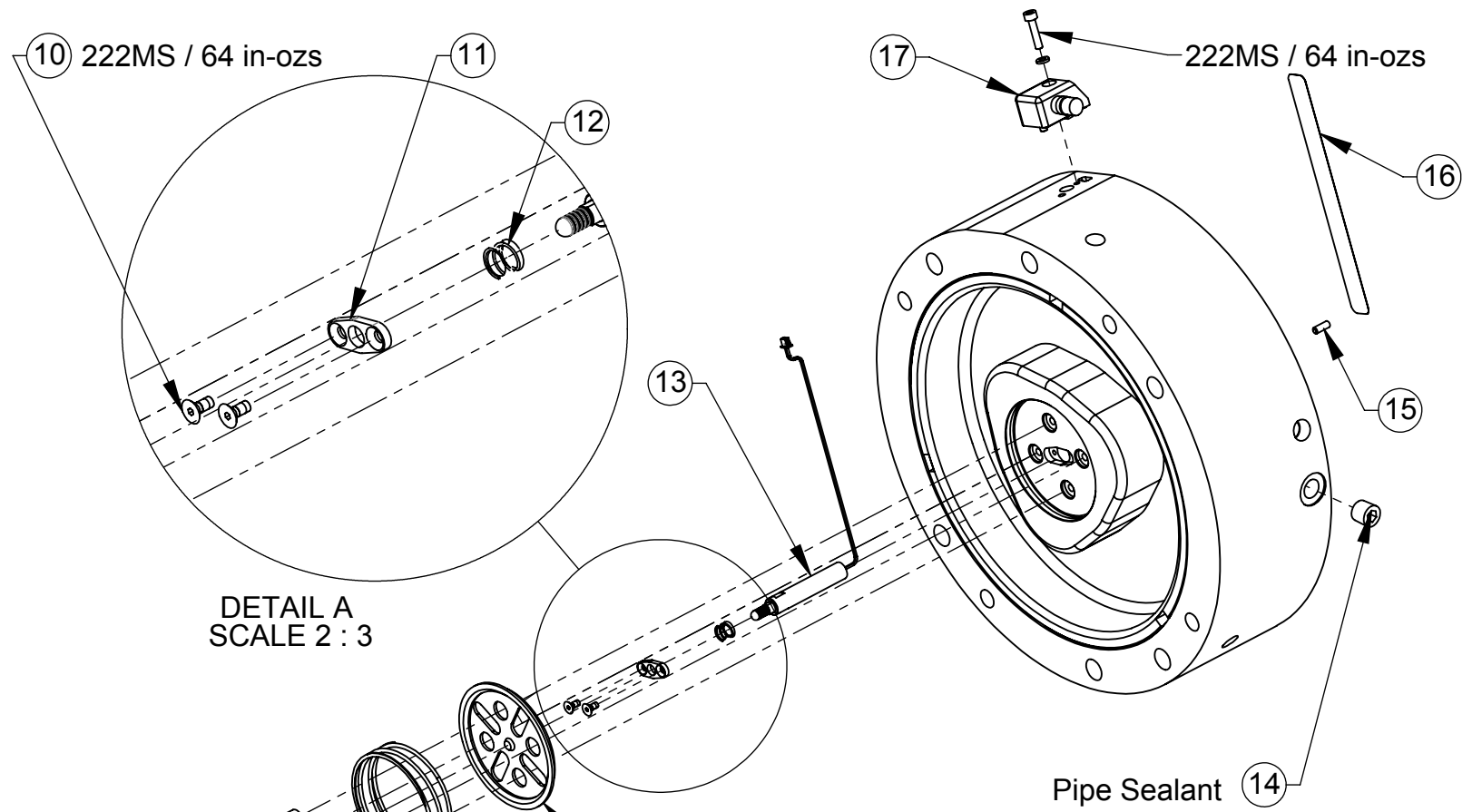


| ITEM NO. | QTY. | PART NO. | DESCRIPTION |
|----------|------|------------------------|---|
| 1 | 4 | 3500-1070030-15A | M10 x 30mm SHCS MB w/Microspheres |
| 2 | 1 | 9160-STEMCOVKIT-221* | Cover Plate Sub-assembly |
| 3 | 1 | (Includes Items 1 & 4) | Stem Sub-assembly |
| 4 | 1 | 3410-0001145-01 | Cover O-ring |
| 5 | 4 | 3500-1062030-15A | M4 x 30mm SHCS MB w/Microspheres |
| 6 | 1 | 3700-60-1676 | Spring Plate |
| 7 | 1 | 3610-2304400-20 | Actuation Spring |
| 8 | 4 | 3700-60-1681 | 8mm x 18mm Standoff |
| 9 | 1 | 3700-60-1677 | Actuation Plate |
| 10 | 2 | 9160-SWITCHKIT-221 | M2.5 x 6mm SFHCS, Black Oxide |
| 11 | 1 | (Includes Item 16) | Spring Stop |
| 12 | 1 | | Switch Carrier Spring |
| 13 | 1 | | Switch Assembly |
| 14 | 1 | 3490-0001009-01 | 1/8" Pipe Plug, Air Supply Port |
| | 1 | 3490-0001021-01 | Rc 1/8" Pipe Plug, Air Supply Port |
| 15 | 1 | 3500-1958008-12A | M3 x 8 SHSS, Black Oxide, N.D. Microspheres |
| 16 | 1 | 3700-60-1348 | Wire Channel Gasket |
| | 1 | 3700-60-1665 | Molded Wire Channel Gasket (Use with C1, C3 and C5 Boots) |
| 17 | 1 | 9160-CON-2 | Connector Block Assembly |

| Rev. | Description | Initiator | Date |
|------|--------------------------------------|-----------|----------|
| 04 | Eco 16278; 9160-Con-2 was 9160-Con-1 | LJH | 11/27/17 |

* For units with grey covers add "-S" to end of part number.

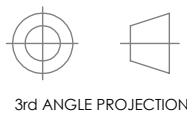


Notes:

1. See sheet 2 for optional boots and shields.
2. Apply the specified grade of Loctite / tighten fasteners to the specified torque.
3. Screw in until touching bottom of groove in piston and then back out 1/2 turn.

NOTES: UNLESS OTHERWISE SPECIFIED.

DO NOT SCALE DRAWING. ALL DIMENSIONS ARE IN MILLIMETERS.



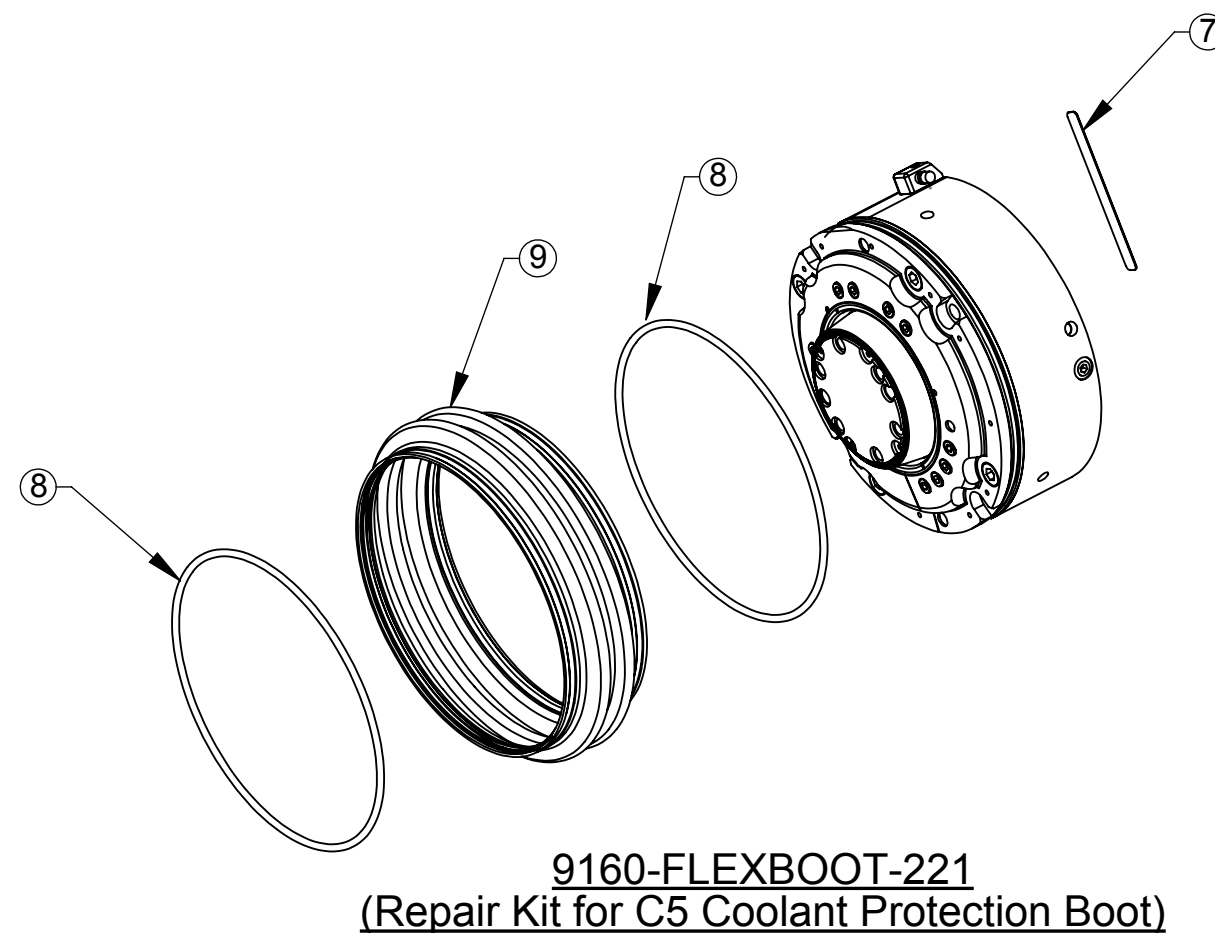
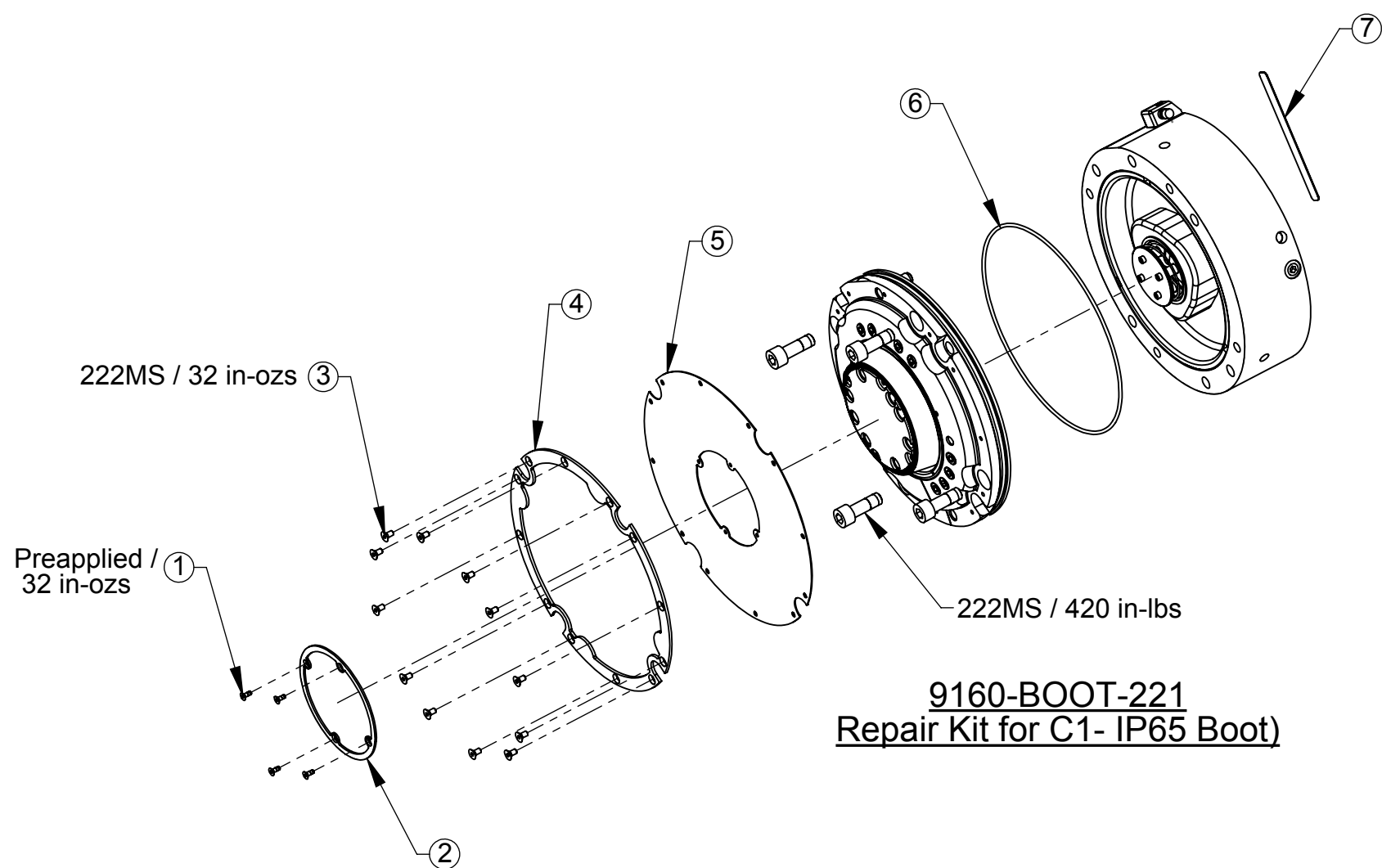
1031 Goodworth Drive, Apex, NC 27539, USA
 Tel: +1.919.772.0115 Email: info@ati-ia.com
 Fax: +1.919.772.8259 www.ati-ia.com
 ISO 9001 Registered Company

PROPERTY OF ATI INDUSTRIAL AUTOMATION, INC. NOT TO BE REPRODUCED IN ANY MANNER EXCEPT ON ORDER OR WITH PRIOR WRITTEN AUTHORIZATION OF ATI.

| | | | |
|------------------------------|-----------------------------|----------------------------------|-------------|
| DRAWN BY: D. Wagner, 4/14/08 | | TITLE | |
| CHECKED BY: WB, 4/16/08 | | SR-221 Collision Sensor Assembly | |
| PROJECT # 070517-2 | SHEET 1 OF 2 | SCALE 1:3 | REVISION 04 |
| SIZE B | DRAWING NUMBER 9230-60-1127 | | |

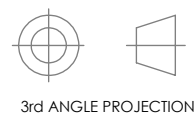
| ITEM NO. | QTY. | PART NO. | DESCRIPTION |
|----------|------|-----------------|---|
| 1 | 4 | NSS | M3 x 8 SFHCS, Black Oxide, Microspheres Epoxy |
| 2 | 1 | NSS | Upper Boot Retainer |
| 3 | 12 | NSS | M4 x 8 SFHCS, Zinc |
| 4 | 1 | NSS | Lower Boot Retainer |
| 5 | 1 | 3700-60-1356 | Boot |
| 6 | 1 | 3410-0001145-01 | O-Ring AS568-168 |
| 7 | 1 | 3700-60-1665 | Molded Wire Channel Gasket |
| 8 | 2 | NSS | Garter Spring |
| 9 | 1 | 3700-60-1585 | Flexible Boot |

NSS - Not sold separately - included in the appropriate repair kit.



NOTES: UNLESS OTHERWISE SPECIFIED.

DO NOT SCALE DRAWING. ALL DIMENSIONS ARE IN MILLIMETERS.



1031 Goodworth Drive, Apex, NC 27539, USA
 Tel: +1.919.772.0115 Email: info@ati-ia.com
 Fax: +1.919.772.8259 www.ati-ia.com
 ISO 9001 Registered Company

PROPERTY OF ATI INDUSTRIAL AUTOMATION, INC. NOT TO BE REPRODUCED IN ANY MANNER EXCEPT ON ORDER OR WITH PRIOR WRITTEN AUTHORIZATION OF ATI.

| | | | |
|------------------------------|--------------|----------------------------------|--------|
| DRAWN BY: D. Wagner, 4/14/08 | | TITLE | |
| CHECKED BY: WB, 4/16/08 | | SR-221 Collision Sensor Assembly | |
| PROJECT # 070517-2 | SHEET 2 OF 2 | SCALE 1:5 | SIZE B |
| DRAWING NUMBER 9230-60-1127 | | REVISION 04 | |