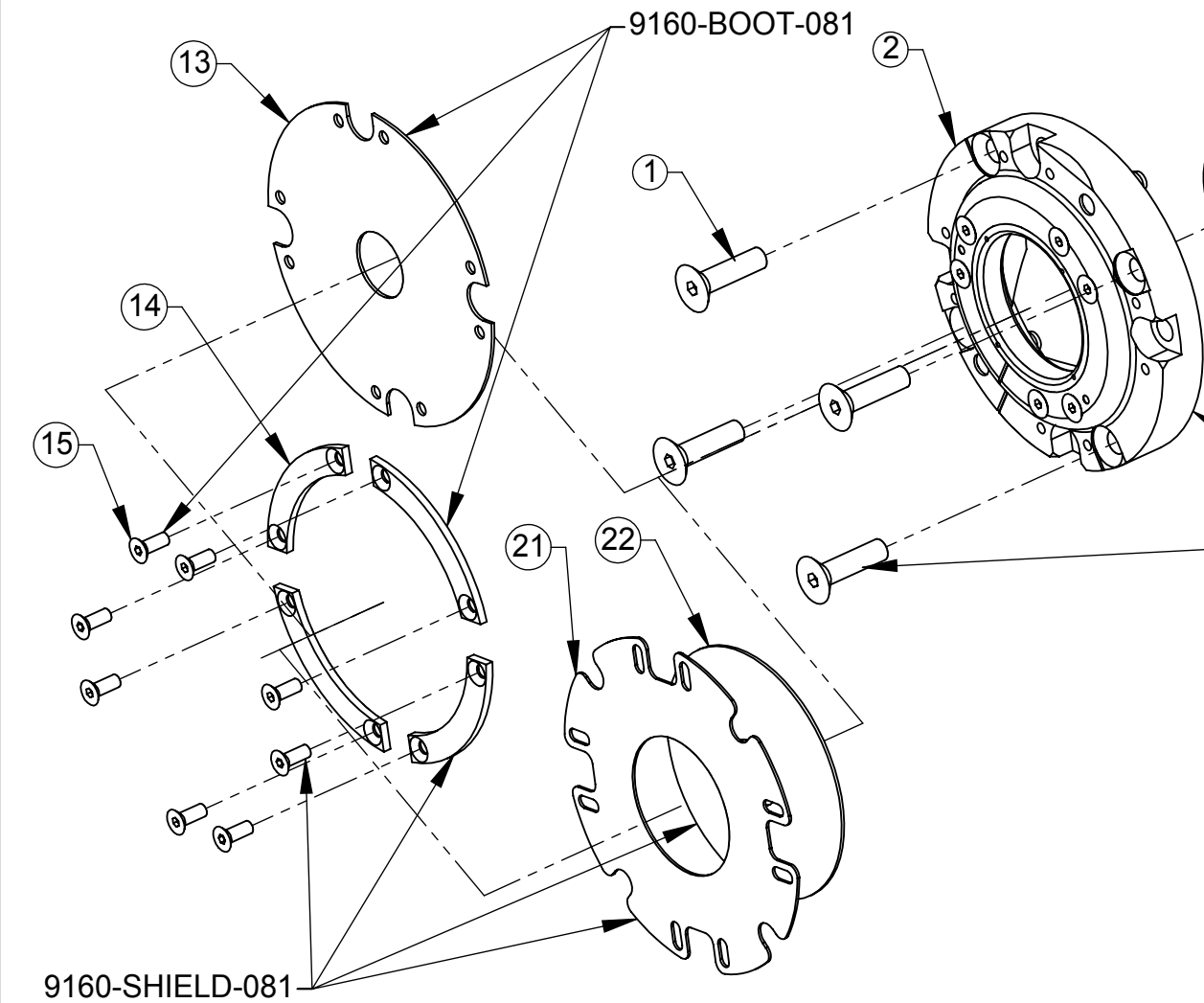


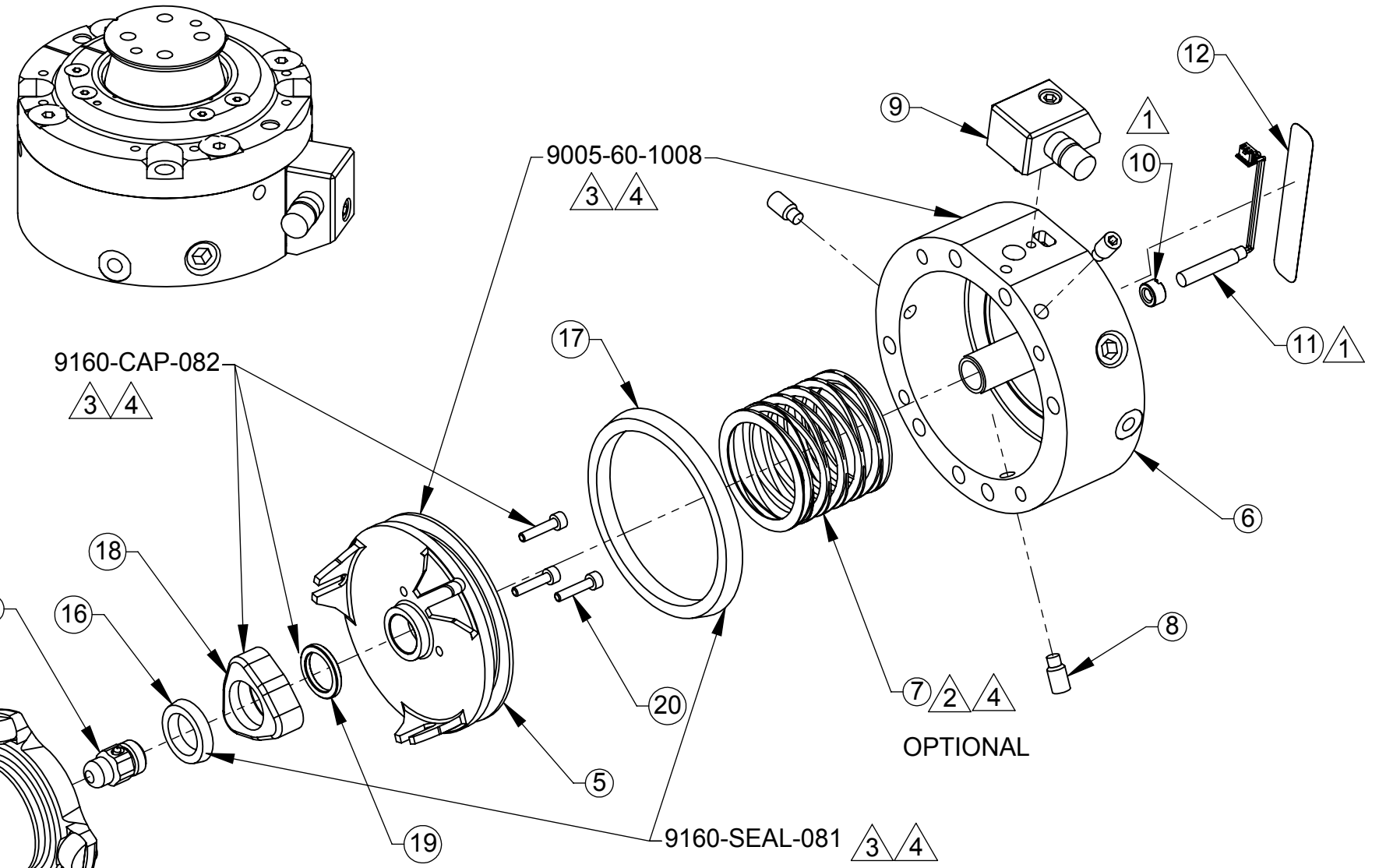
ITEM NO.	QTY.	PART NO.	DESCRIPTION
1	4	3500-1264020-15	M5 x 20mm SFHCS
2	1	9160-STEMCOVKIT-081 *	Cover Plate Sub-assembly
3	1	(INCLUDES ITEM 1)	Stem Sub-assembly
4	1	9160-TARGET-082	Target Assembly, SR-82
5	1	9005-60-1008	Piston
6	1		Body, SR-82
7	1	3610-1810001-21	Assist Spring, P05 (OPTIONAL)
	1	3610-1811201-20	Assist Spring, P05 (OPTIONAL)
	1	3610-9505100-20	Assist Spring, P05 (OPTIONAL)
8	3	3500-1964010-15	M5 x 10mm Dog Point Set Screw
9	1	9160-CON-3	Connector Block Assembly
10	1	3700-60-1514	Switch Locknut, SR-082
11	1	9160-SENSOR-082	Switch Assembly, SR-082
12	1	3700-60-1113	Gasket, Wire Channel, SR-81 & SR-101
13	1	3700-60-1099	Boot, SR-81 (OPTIONAL)
14	4	9160-BOOT-081	Retainer, Boot, SR-81 (OPTIONAL)
15	8	(INCLUDES ITEM 13)	M3 X 8 Socket Flat Head Screw, Zinc (OPTIONAL)
16	1	9160-SEAL-081	Inner U-Cup
17	1		Outer U-Cup
18	1	9160-CAP-082	Cap, Piston, SR-082
19	1		Actuator Ring
20	3		M2.5 x 12mm SHCS Black Oxide
21	1	9160-SHIELD-081	Weld Splatter Shield, SR-81 (OPTIONAL)
22	1	(INCLUDES ITEMS 14 & 15)	EPDM Rubber Seal, SR-81 (OPTIONAL)

\* FOR UNITS WITH GREY COVERS ADD "-S" TO END OF KIT NUMBER



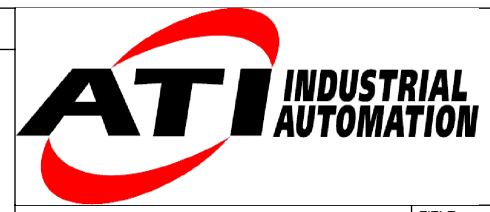
PROPERTY OF ATI INDUSTRIAL AUTOMATION, INC.  
NOT TO BE REPRODUCED IN ANY MANNER EXCEPT ON  
ORDER OR WITH PRIOR WRITTEN AUTHORIZATION OF ATI.

Rev.	Description	Initiator	Date
01	Initial Version	DAW	6/12/2006



- ▲ 1 3810-60-1396 DRIVE TOOL REQUIRED
- ▲ 2 9040-6001065 SPRING COMPRESSION TOOL REQUIRED
- ▲ 3 9040-6001065 SPRING COMPRESSION TOOL REQUIRED IF EQUIPPED WITH ASSIST SPRING
- ▲ 4 3810-60-1127 & 3810-60-1128 ASSEMBLY TOOLS REQUIRED

NOTES: UNLESS OTHERWISE SPECIFIED  
DO NOT SCALE DRAWING. DRAWN IN SOLIDWORKS.  
ALL DIMENSIONS ARE IN MILLIMETERS.



1031 Goodworth Drive, Apex, NC 27539, USA  
Tel: +1.919.772.0115 Email: info@ati-ia.com  
Fax: +1.919.772.8259 www.ati-ia.com  
ISO 9001 Registered Company

DRAWN BY: D. Wagner 6/12/06	TITLE SR-82 Collision Sensor Assembly		
CHECKED BY: MLG 7/10/06	SCALE 1:1.6	SIZE B	DRAWING NUMBER 9230-60-1093-01
WEIGHT LBS:	PRODUCT RELEASE # 051026-2		DATE:
ASSEMBLY REF:	SHEET 1		OF 1