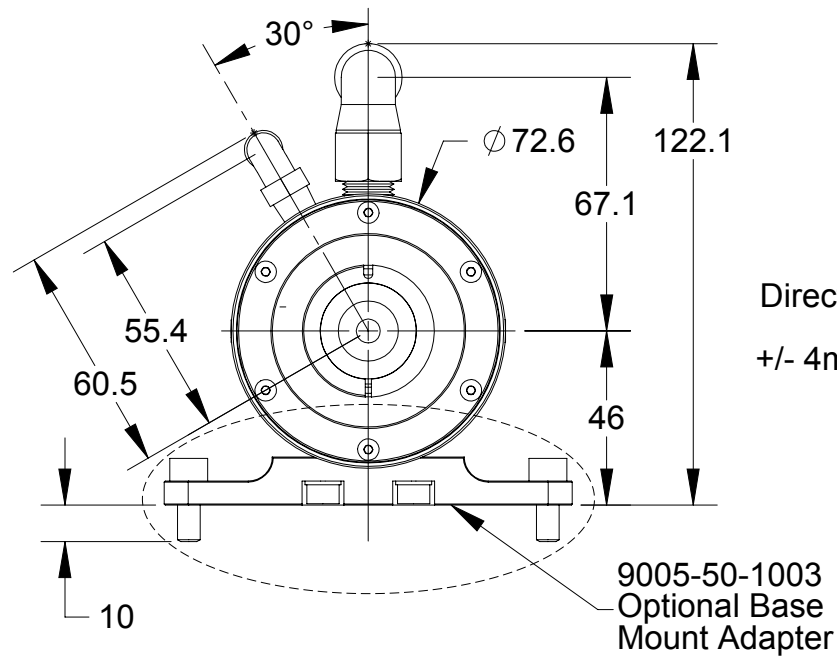
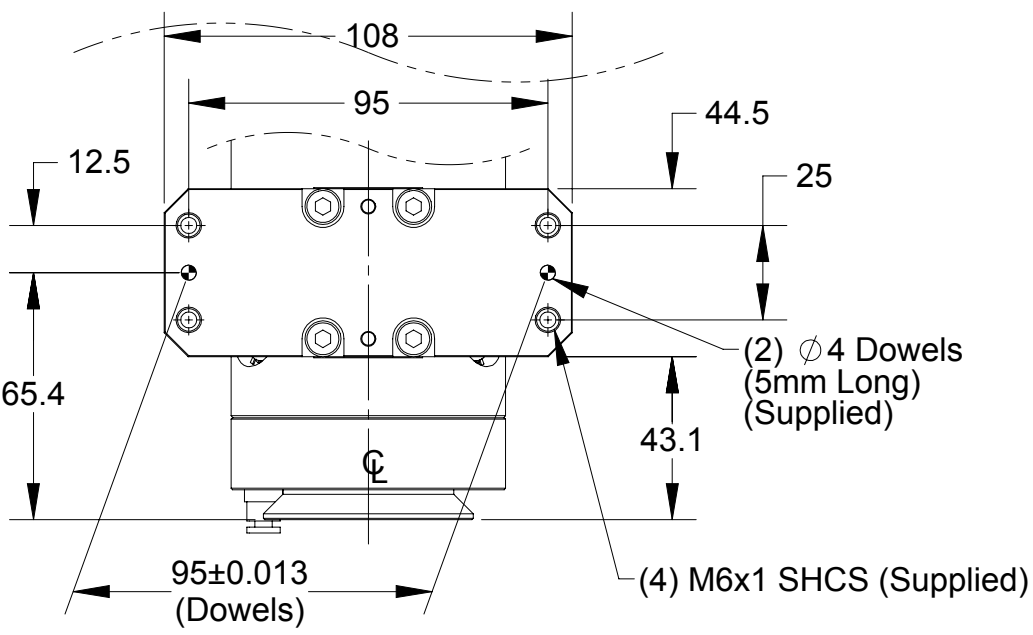
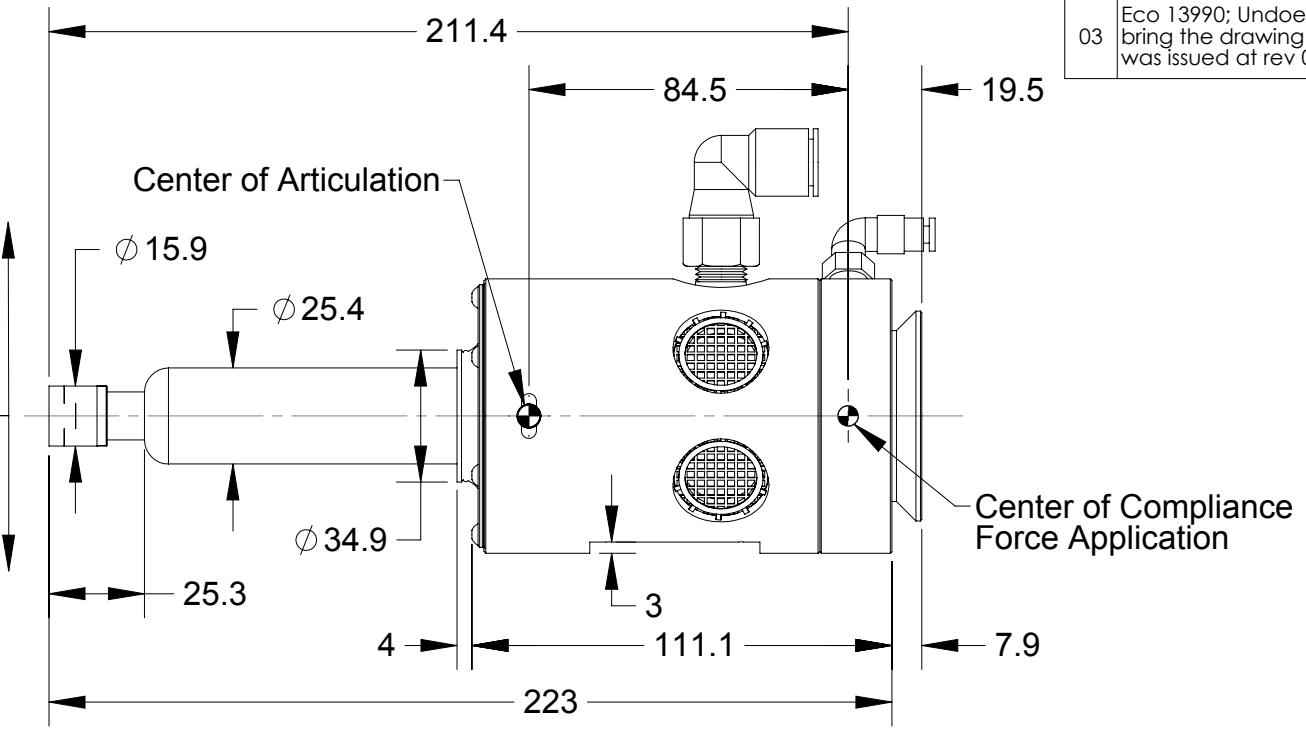


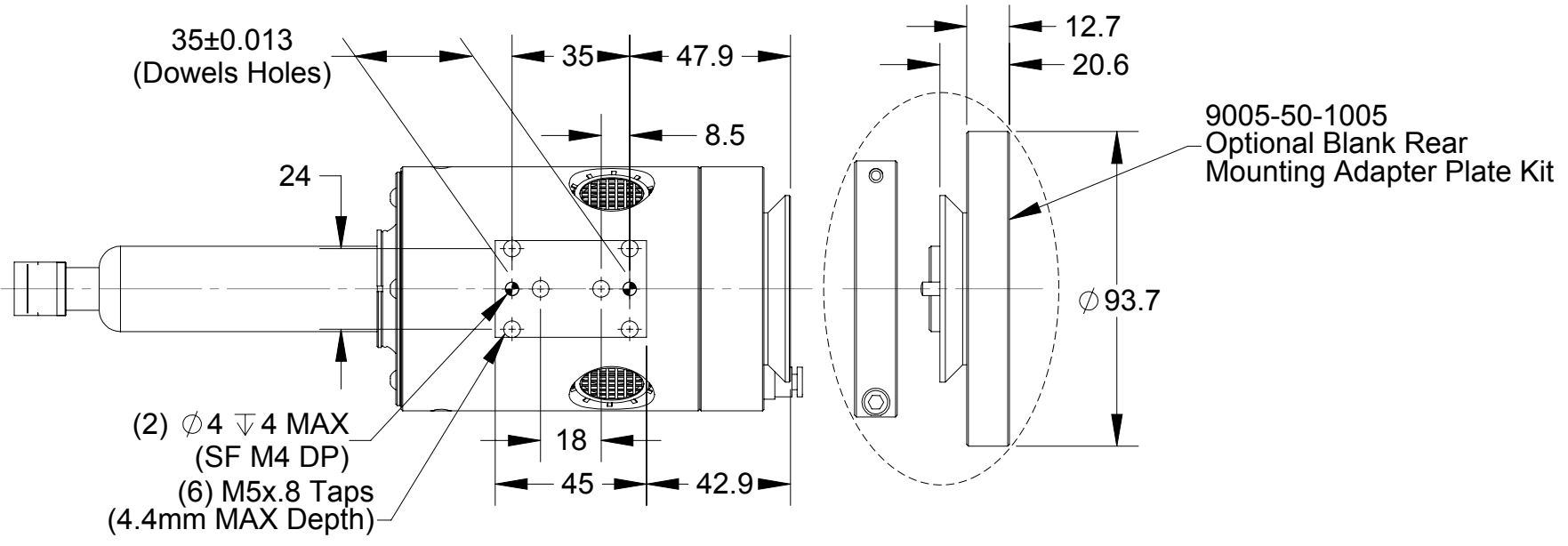
Rev.	Description	Initiator	Date
03	Eco 13990; Undoes the rev 02 change (Eco 11913), to bring the drawing up to the original configuration that was issued at rev 01.	LJH	11/20/2015



Direction of Compliance  
 +/- 5.5mm MAX  
 +/- 4mm Recommended

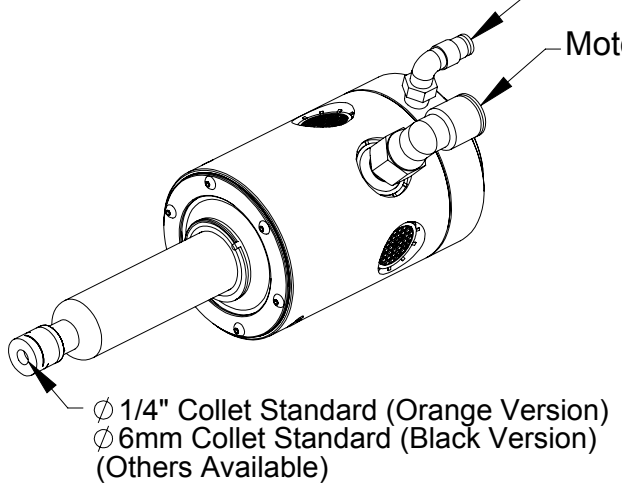


(9005-50-1003, Optional Bench Mount Adapter)  
 (Bottom View)



Compliance Air Supply:  $\phi$  5/32" [4mm] Push-to-Connect Fitting.  
 Motor Air Supply:  $\phi$  3/8" Push-to-Connect Fitting (Orange Version)  
 $\phi$  5/16" [8mm] Push-to-Connect Fitting (Black Version). (Adapters Available)

- Notes:
- Motor/Spindle air to be regulated to 6.2 Bar [90 PSI]
  - Air supply to be dry, NOT lubricated, and filtered 5 Micron or better. (The use of a coalescing filter is recommended).
  - Air consumption 2.83 l/s [6 CFM] at idle, 10.2 l/s [21.5 CFM] at stall.
  - DO NOT restrict air flow or pressure to alter motor speed.
  - The installed air supply fittings may be removed to utilize customer supplied air fittings.
  - Do not exceed the maximum thread length for mounting fasteners where specified.



NOTES: UNLESS OTHERWISE SPECIFIED.  DO NOT SCALE DRAWING. ALL DIMENSIONS ARE IN MILLIMETERS.			1031 Goodworth Drive, Apex, NC 27539, USA Tel: +1.919.772.0115 Email: info@ati-ia.com Fax: +1.919.772.8259 www.ati-ia.com ISO 9001 Registered Company	
	DRAWN BY: D.Lawson-5/10/11 CHECKED BY: D.Swanson-5/11/11		TITLE <b>RS-340 Single-Axis, Radially-Compliant, Deburring Tool</b>	
	PROJECT # 110210-1 SHEET 1 OF 1	SCALE <b>1:2</b>	SIZE <b>B</b>	DRAWING NUMBER <b>9230-50-1045</b>
				REVISION <b>03</b>

PROPERTY OF ATI INDUSTRIAL AUTOMATION, INC. NOT TO BE REPRODUCED IN ANY MANNER EXCEPT ON ORDER OR WITH PRIOR WRITTEN AUTHORIZATION OF ATI.