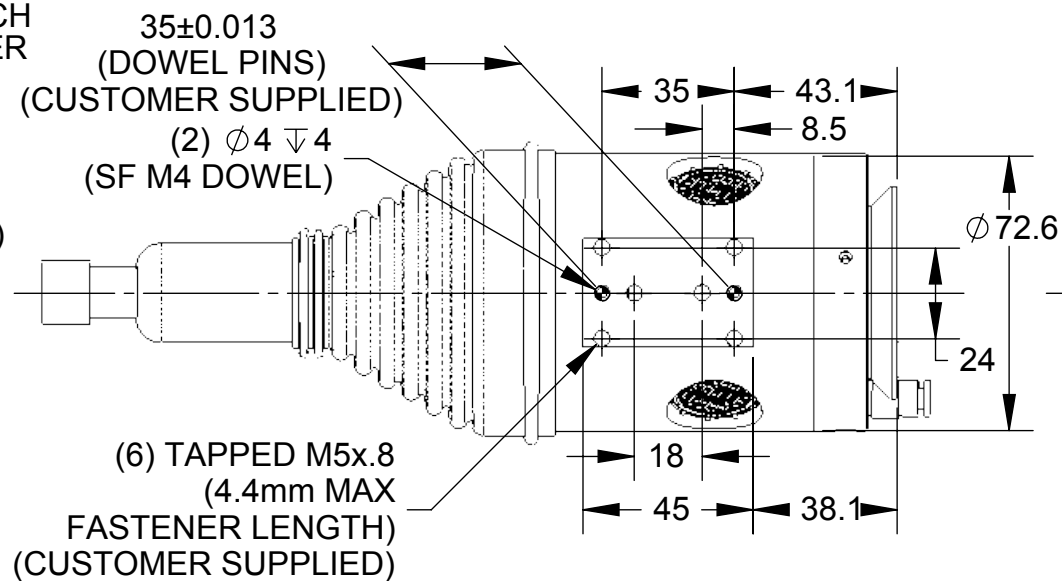
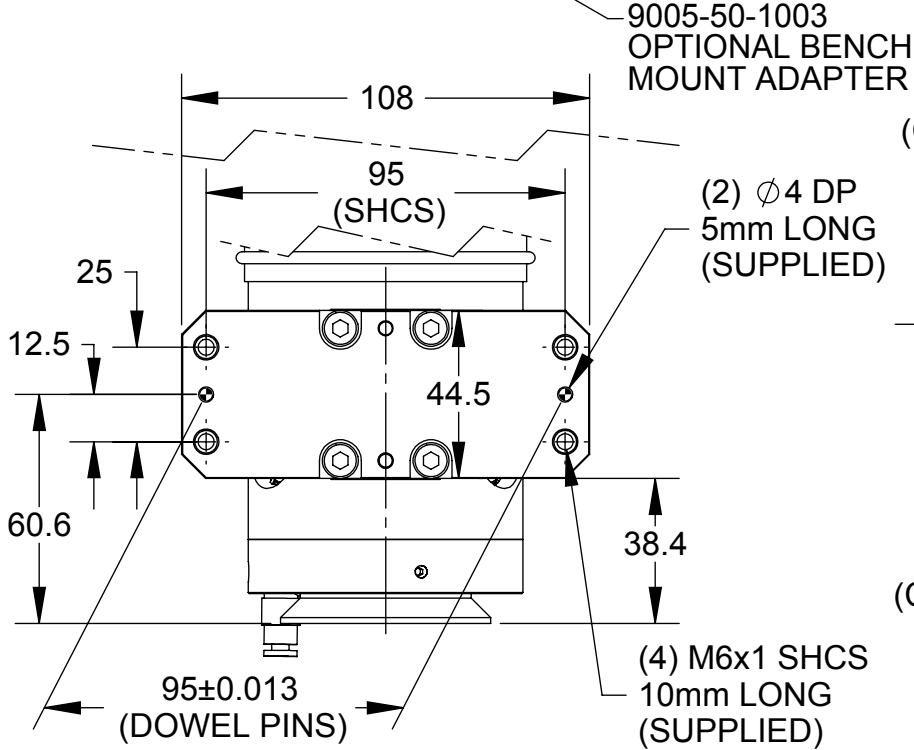
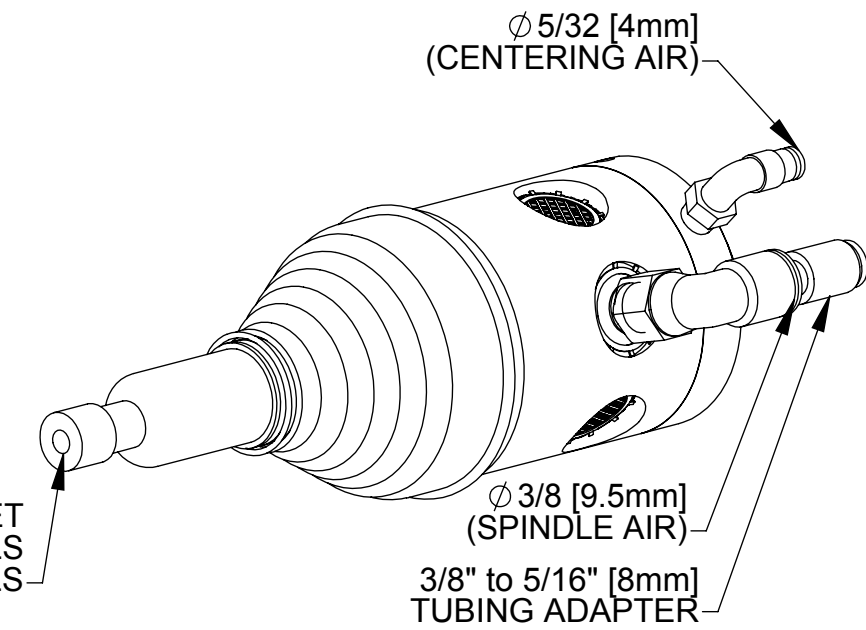
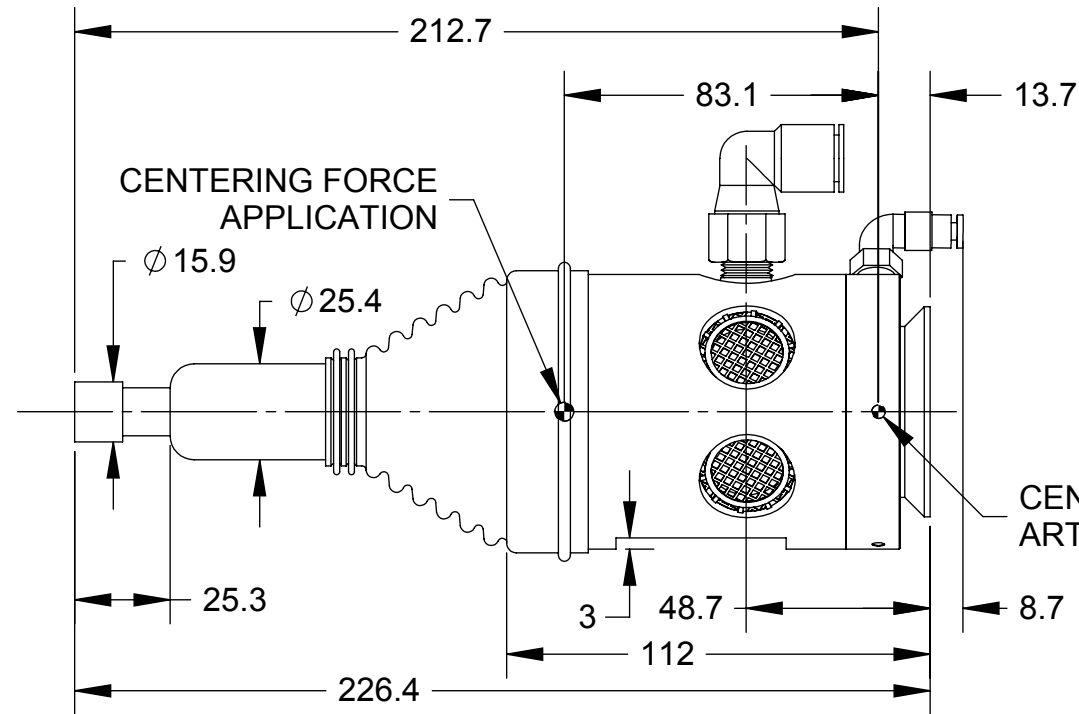
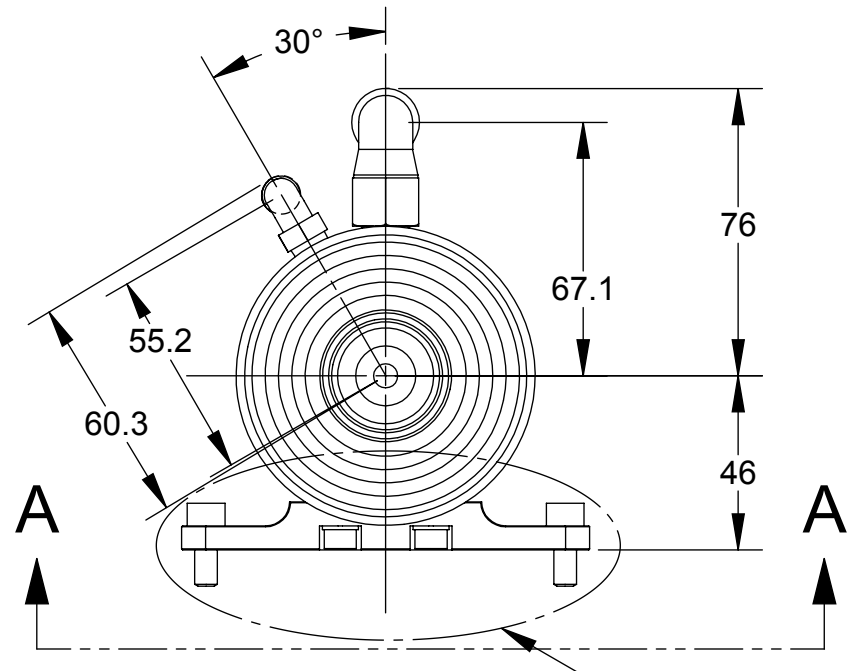
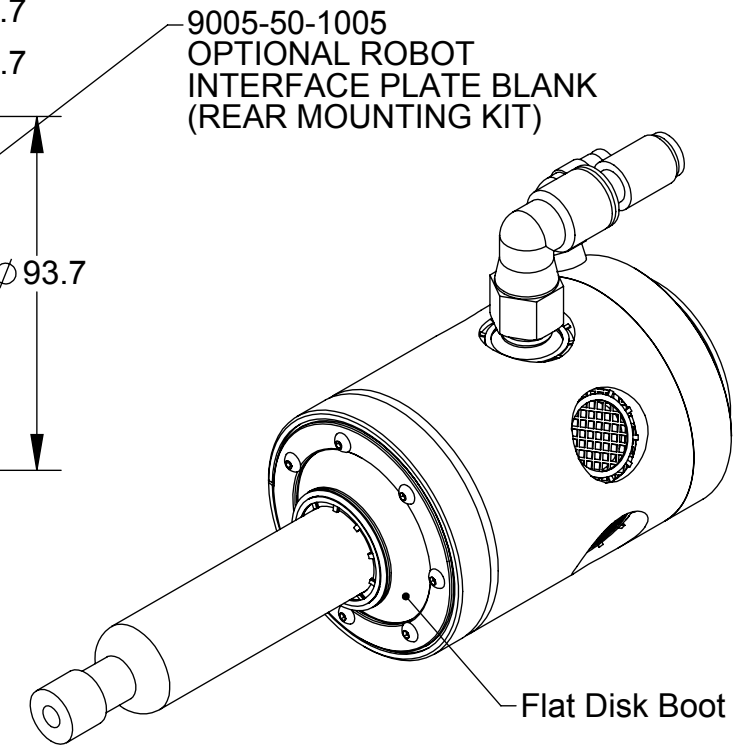
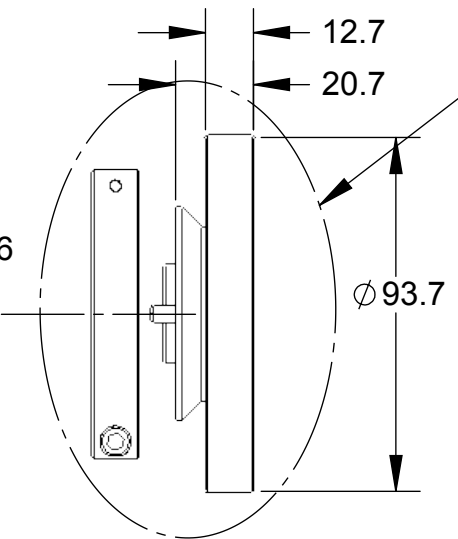


Rev.	Description	Initiator	Date
06	Eco 18926; Note 3 replaced 2.83 l/s [6 CFM] AT IDLE, 10.2 l/s [21.5 CFM] AT STALL with "5.6-10.2 l/s (12-21.5 CFM)"	DS	4/29/2020



FLEXDEBURR RC-300 SERIES
 RC-300, -340, -300-E, -340-E,
 ARE DIMENSIONALLY IDENTICAL

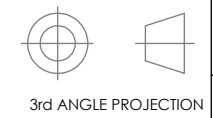


The tapered bellows boot may be removed if necessary.
 (Flat Disk Boot shown underneath)

- NOTES:**
- 1) SPINDLE AIR SUPPLY TO BE REGULATED TO 6.2 BAR [90 PSI].
 - 2) AIR SUPPLY TO BE FILTERED 5 MICRON OR BETTER, DRY, AND NON-LUBRICATED. (THE USE OF A COALESCING FILTER IS RECOMMENDED).
 - 3) SPINDLE AIR CONSUMPTION 5.6-10.2 l/s (12-21.5 CFM).
 - 4) SUPPLIED AIR FITTINGS MAY BE REMOVED TO UTILIZE CUSTOMER SUPPLIED 1/8NPT FITTINGS.
 - 5) DO NOT USE LIQUID THREAD LOCKER ON MOUNTING FASTENERS, USE LOCK WASHERS.
 - 6) DO NOT EXCEED THE MAXIMUM THREAD LENGTH SHOWN FOR MOUNTING FASTENERS.

NOTES: UNLESS OTHERWISE SPECIFIED.

DO NOT SCALE DRAWING. ALL DIMENSIONS ARE IN MILLIMETERS.



1031 Goodworth Drive, Apex, NC 27539, USA
 Tel: +1.919.772.0115 Email: info@ati-ia.com
 Fax: +1.919.772.8259 www.ati-ia.com
 ISO 9001 Registered Company

PROPERTY OF ATI INDUSTRIAL AUTOMATION, INC. NOT TO BE REPRODUCED IN ANY MANNER EXCEPT ON ORDER OR WITH PRIOR WRITTEN AUTHORIZATION OF ATI.

DRAWN BY: J.Snape-6/3/04		TITLE	
CHECKED BY: D.Lawson 6/3/04		RC Deburring Tool, 300 Series	
SCALE	SIZE	DRAWING NUMBER	REVISION
1:2	B	9230-50-1033	06
PROJECT # 020718-2 SHEET 1 OF 1			