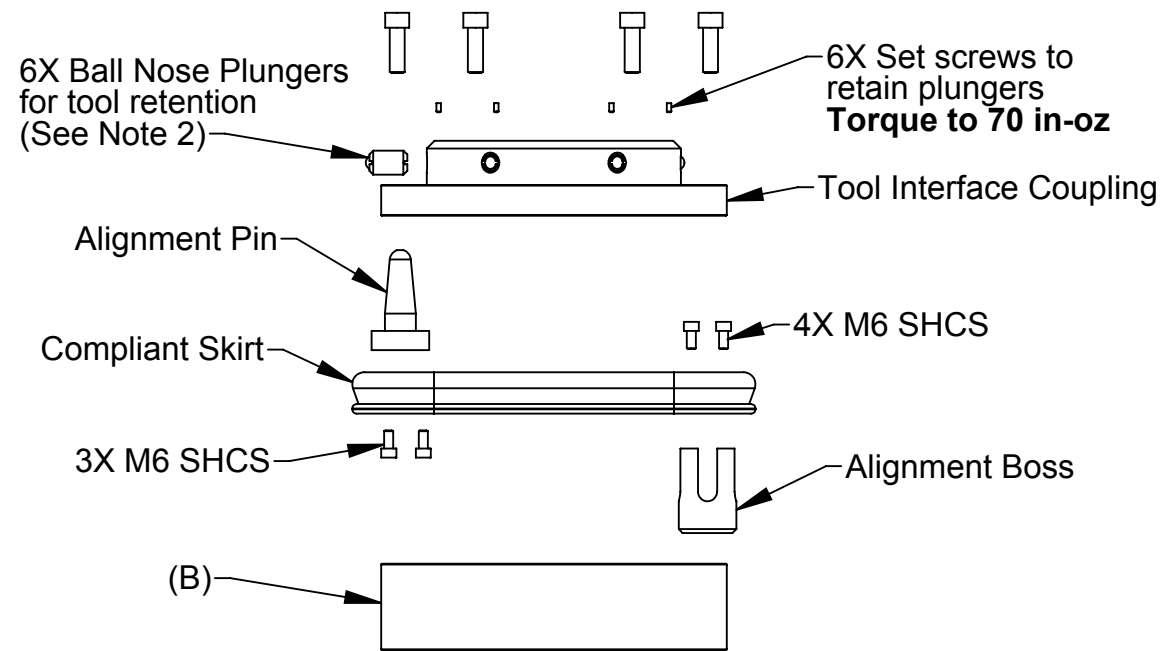
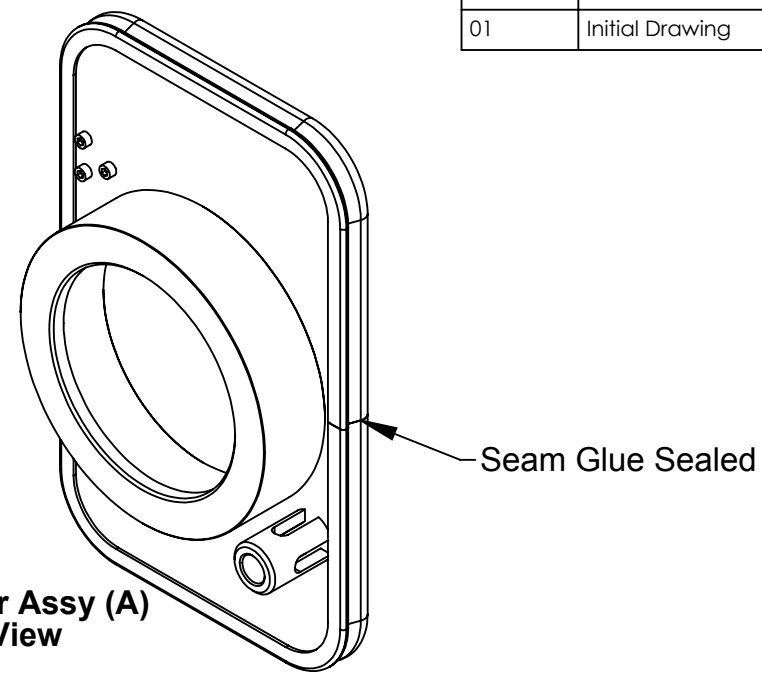


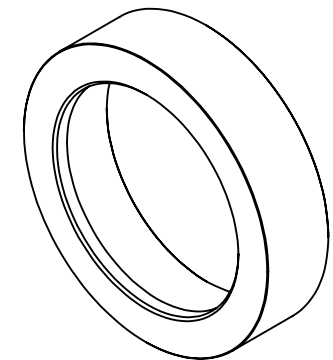
Rev.	Description	Initiator	Date
01	Initial Drawing	JMW	5/29/2013



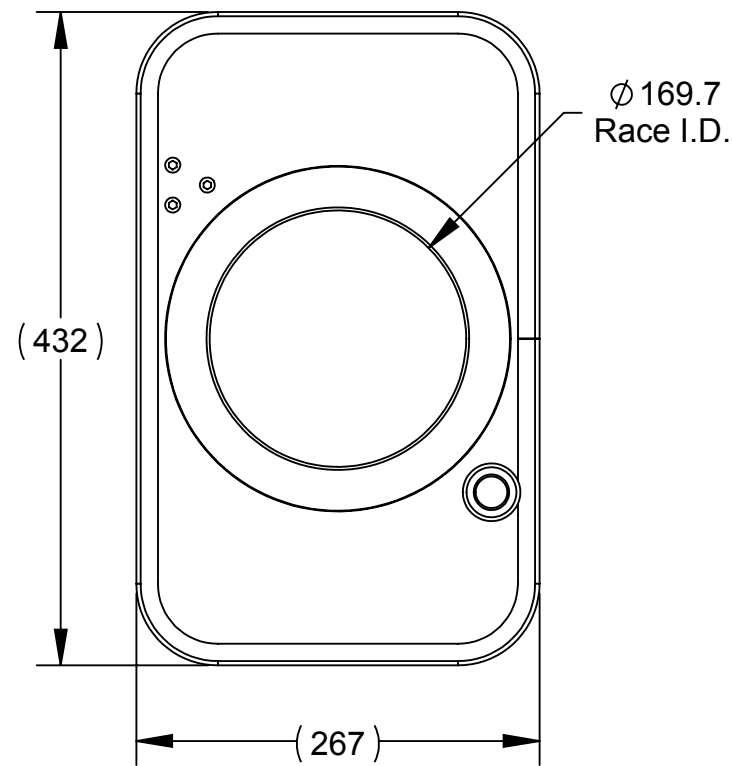
Dust Cover Assembly Exploded View



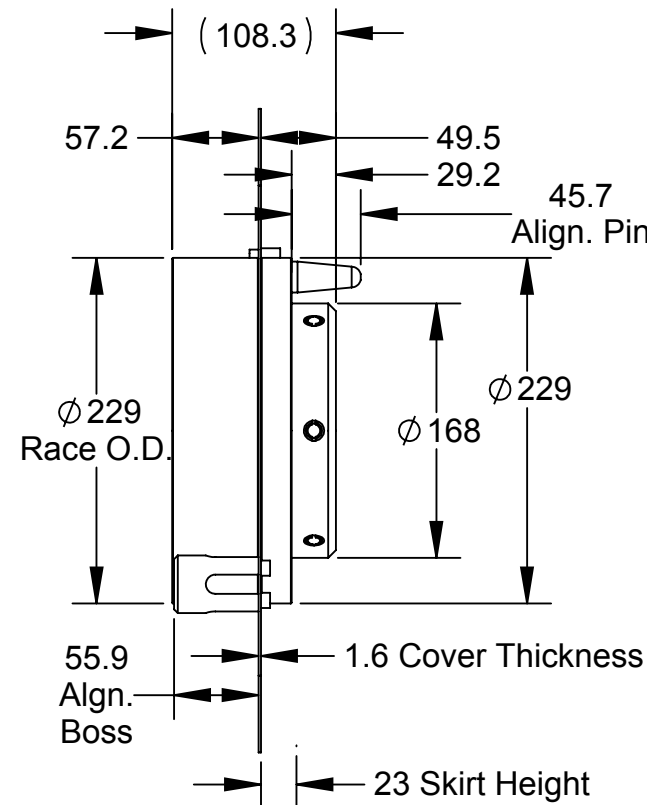
**Dust Cover Assy (A)
Isometric View**



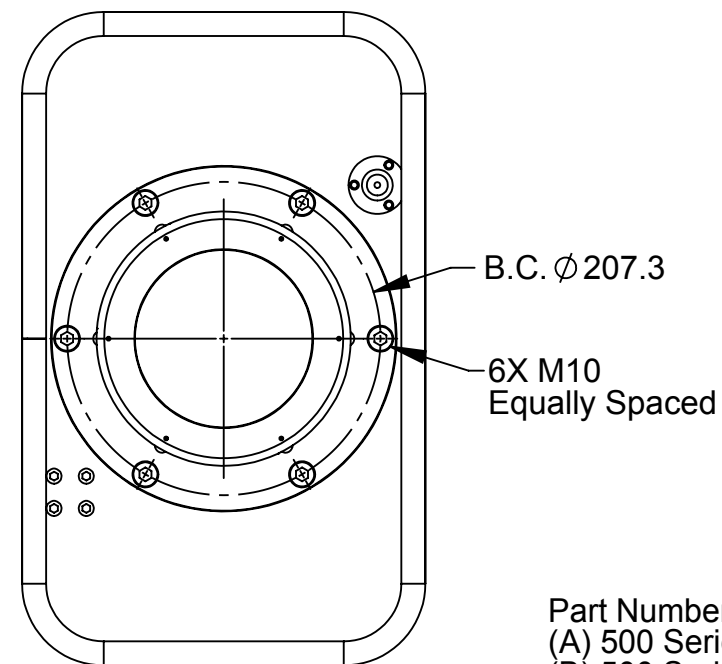
**Al. Bearing Race (B)
Isometric View**



Dust Cover Tool Face



**Side View
(Skirt not shown for Clarity)**



Dust Cover Master Face

Part Numbers:
 (A) 500 Series Dust Cover Assy.: 9120-DC-500-2
 (B) 500 Series Aluminum Bearing Race: 9120-DC-5726

Notes:

- Materials of Construction:
 - A. Master Interface Race, Aluminum
 - B. Dust Cover, Thin Gauge Stainless
 - C. Tool Interface Coupling, Aluminum
 - D. Skirt, EPDM Rubber
 - E. Ball-Nose Plungers, Stainless Steel Ball Tip and Case
 - F. Set Screws, M3-0.5 x 6 mm, Flatpoint, Steel
 - G. Alignment Pin & Alignment Boss, Steel
- Ball Plungers require lubrication. Mobilgrease XHP-222 Special
- Flexibility to interchange cover sizes and replace worn parts

NOTES: UNLESS OTHERWISE SPECIFIED.

DO NOT SCALE DRAWING. ALL DIMENSIONS ARE IN MILLIMETERS.



3rd ANGLE PROJECTION



1031 Goodworth Drive, Apex, NC 27539, USA
 Tel: +1.919.772.0115 Email: info@ati-ia.com
 Fax: +1.919.772.8259 www.ati-ia.com
 ISO 9001 Registered Company

PROPERTY OF ATI INDUSTRIAL AUTOMATION, INC. NOT TO BE REPRODUCED IN ANY MANNER EXCEPT ON ORDER OR WITH PRIOR WRITTEN AUTHORIZATION OF ATI.

DRAWN BY: J. Winterroth, 5/29/13		TITLE	
CHECKED BY: D. Norton, 5/29/13		9120-DC-500-2 Customer Drawing	
PROJECT # 130521-1	SHEET 1 OF 1	SCALE 1:5	SIZE B
DRAWING NUMBER 9230-20-7643		REVISION 01	