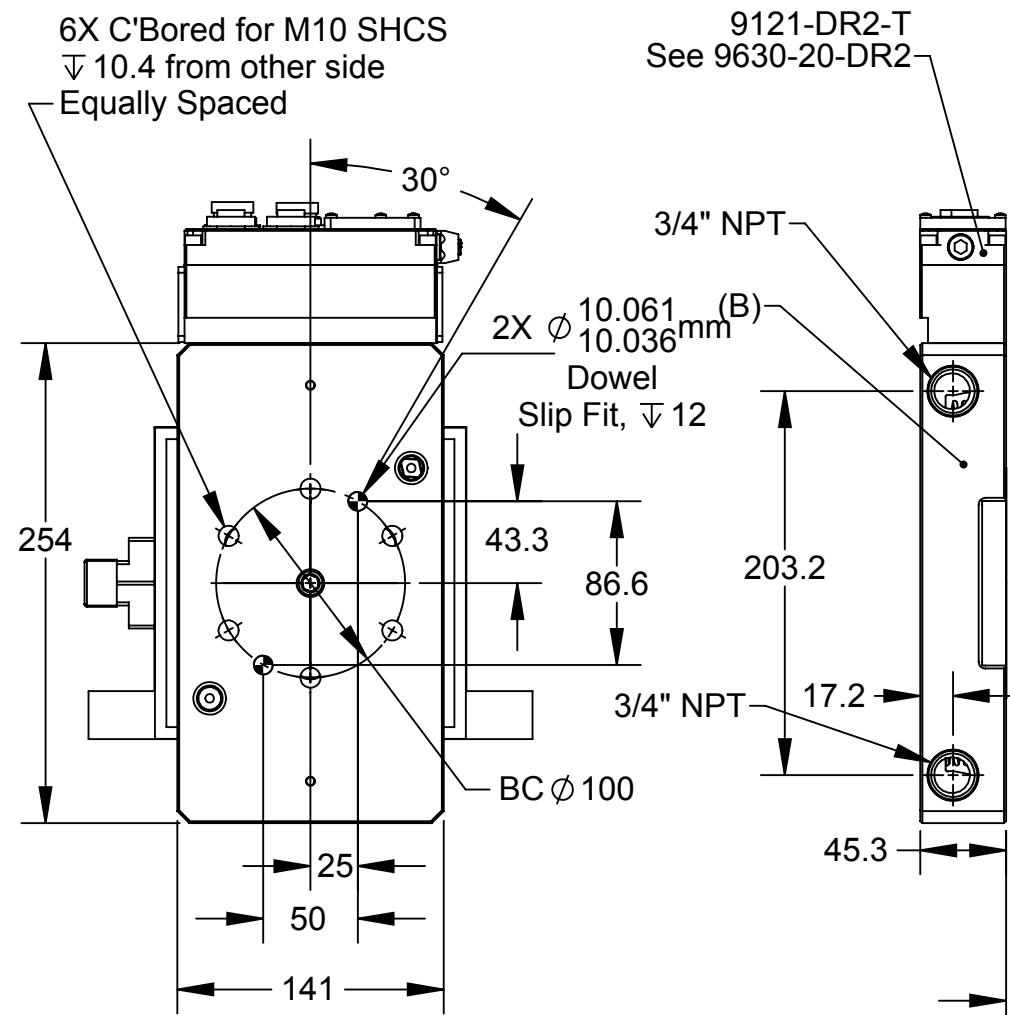


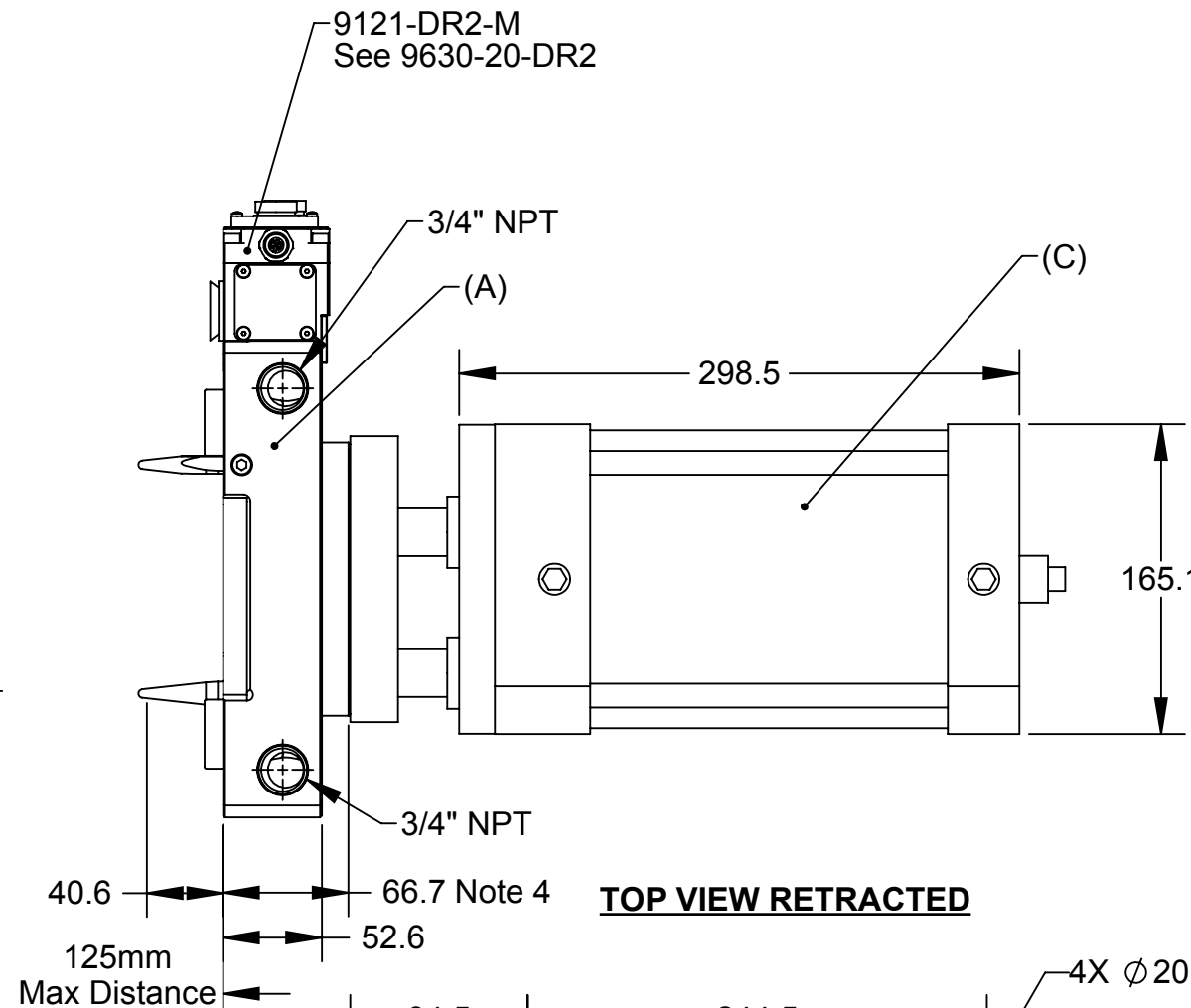
| Rev. | Description | Initiator | Date |
|------|---|-----------|-----------|
| 05 | ECO 17187: Update drawing for changes to 9121-G2E-CUCM-0-0-0-SG assembly. | TBC | 1/18/2019 |



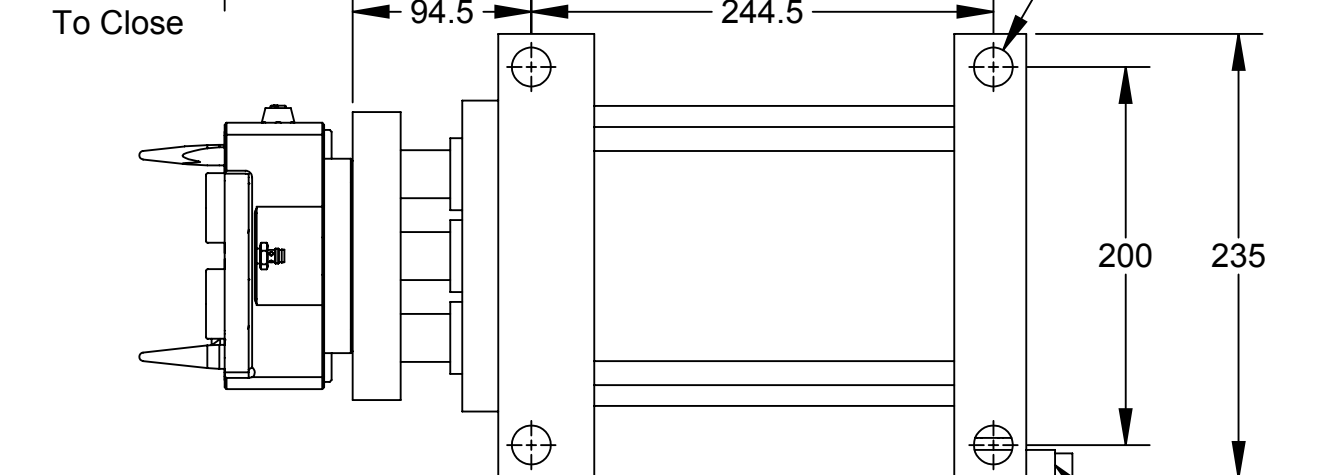
TOOL SIDE MOUNTING VIEW

Part Numbers:
 (A) Master: 9121-G2E-CUCM-DR2-0-0-0-SG
 (B) Tool: 9121-G2E-UCT-DR2-0-0-0
 (C) Actuator: 9121-G2-GC-B150S150-SG

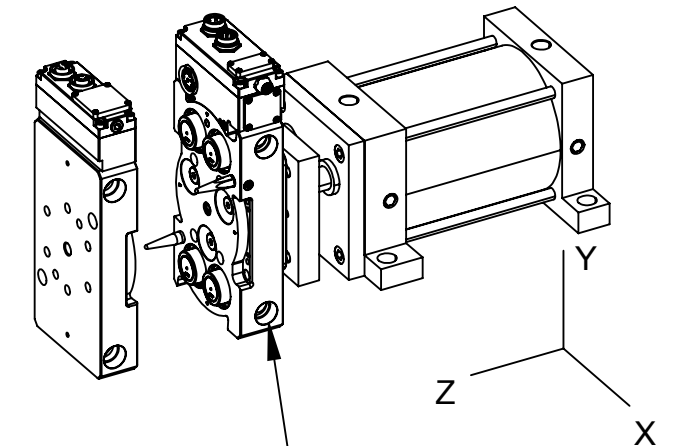
- NOTES:**
- Linear Actuator Unit is Triple Rod Cylinder 6" Max Stroke, and features a Prox Sensor to detect fully retracted position. Prox is PNP 3 Wire DC.
 - Drive Cylinder exerts approximately 2,200lbs of coupling force at 80 psi. Care is needed to accommodate these coupling forces in the design of the mating customer fixture.
 - For Proper Operation, Cylinder Pressure Must be Maintained in order to resist the spring forces in the integrated 3/4" Checked Ports.
 - Master side coupler body compresses 2mm-4mm when coupled.
 - Max cylinder stroke is 150mm. Recommended MAX Master to Tool Spacing is 125mm.



TOP VIEW RETRACTED



BOTTOM VIEW RETRACTED



ISO VIEW

3/4" NPT Port
 2 Ports on Each Side,
 4 Ports Total
 Ports are Checked on
 Master and Tool Halves

Prox Sensor Detects Fully Retracted
 PNP 3 Wire DC

NOTES: UNLESS OTHERWISE SPECIFIED.

DO NOT SCALE DRAWING. ALL DIMENSIONS ARE IN MILLIMETERS.



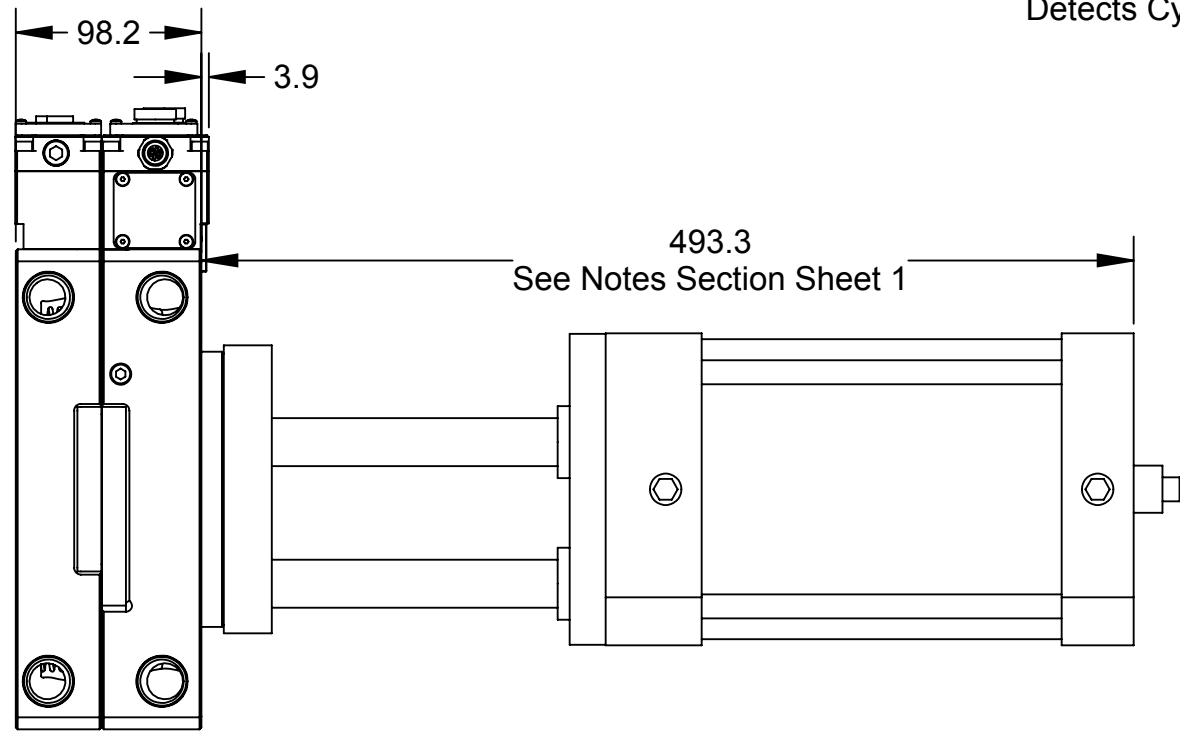
3rd ANGLE PROJECTION



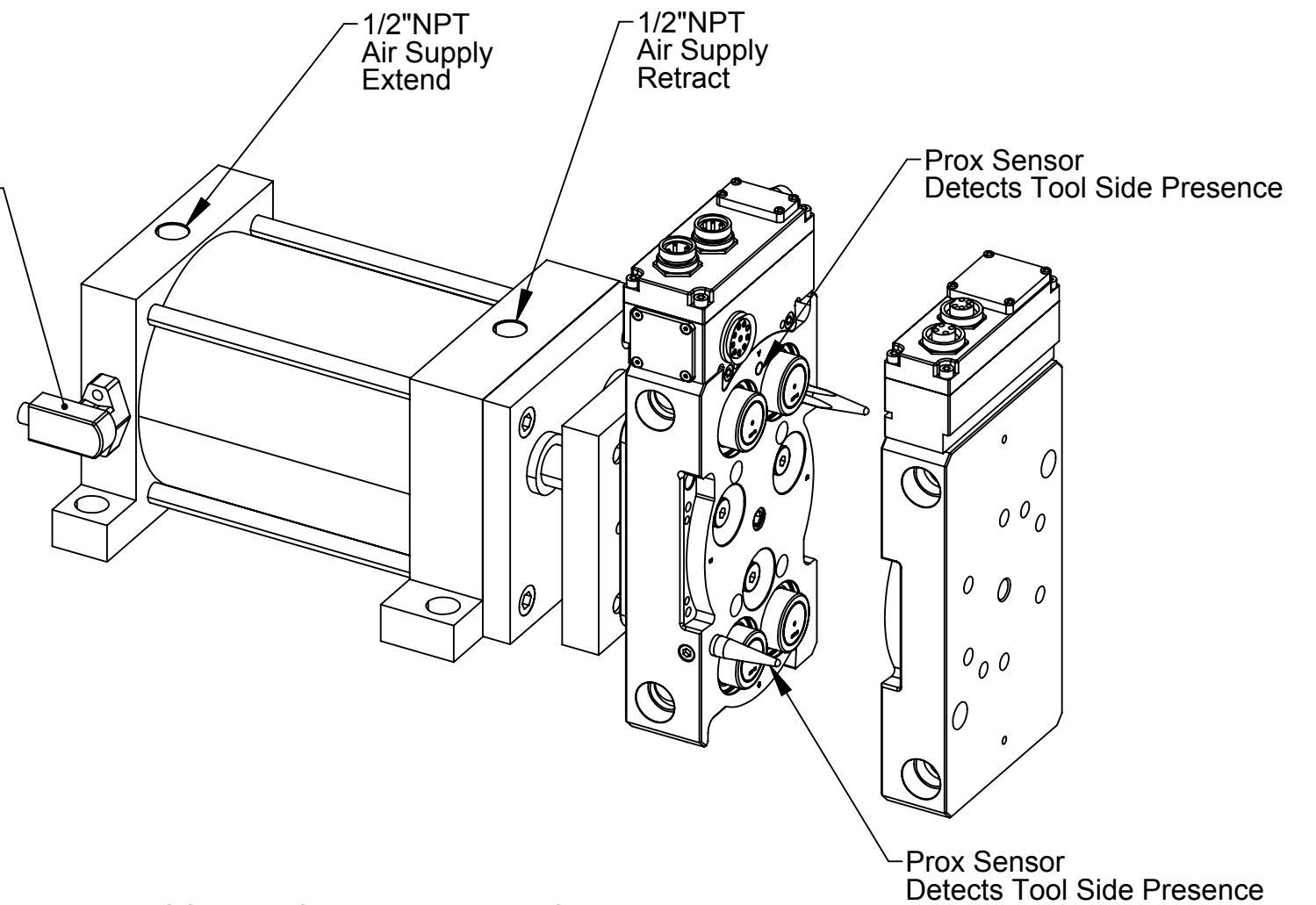
1031 Goodworth Drive, Apex, NC 27539, USA
 Tel: +1.919.772.0115 Email: info@ati-ia.com
 Fax: +1.919.772.8259 www.ati-ia.com
 ISO 9001 Registered Company

PROPERTY OF ATI INDUSTRIAL AUTOMATION, INC. NOT TO BE REPRODUCED IN ANY MANNER EXCEPT ON ORDER OR WITH PRIOR WRITTEN AUTHORIZATION OF ATI.

| | | | |
|-----------------------------|--------------|-----------------------------|-------------|
| DRAWN BY: Dan Norton 3/3/10 | | TITLE | |
| CHECKED BY: KRZ 5/24/10 | | G2E Arrangement | |
| PROJECT # 100204-1 | SHEET 1 OF 2 | SCALE 1:4 | SIZE B |
| | | DRAWING NUMBER 9230-20-3130 | REVISION 05 |



SIDE VIEW WITH CYLINDER EXTENDED



ISO VIEW CYLINDER RETRACTED

NOTES: UNLESS OTHERWISE SPECIFIED.

DO NOT SCALE DRAWING. ALL DIMENSIONS ARE IN MILLIMETERS.



3rd ANGLE PROJECTION



1031 Goodworth Drive, Apex, NC 27539, USA
 Tel: +1.919.772.0115 Email: info@ati-ia.com
 Fax: +1.919.772.8259 www.ati-ia.com
 ISO 9001 Registered Company

PROPERTY OF ATI INDUSTRIAL AUTOMATION, INC. NOT TO BE REPRODUCED IN ANY MANNER EXCEPT ON ORDER OR WITH PRIOR WRITTEN AUTHORIZATION OF ATI.

| | | | | |
|-----------------------------|----------|-----------------|---|----------------|
| DRAWN BY: Dan Norton 3/3/10 | | TITLE | | |
| CHECKED BY: KRZ 5/24/10 | | G2E Arrangement | | |
| PROJECT # | 100204-1 | SHEET | 2 | OF 2 |
| SCALE | 1:4 | SIZE | B | DRAWING NUMBER |
| | | 9230-20-3130 | | REVISION |
| | | | | 05 |