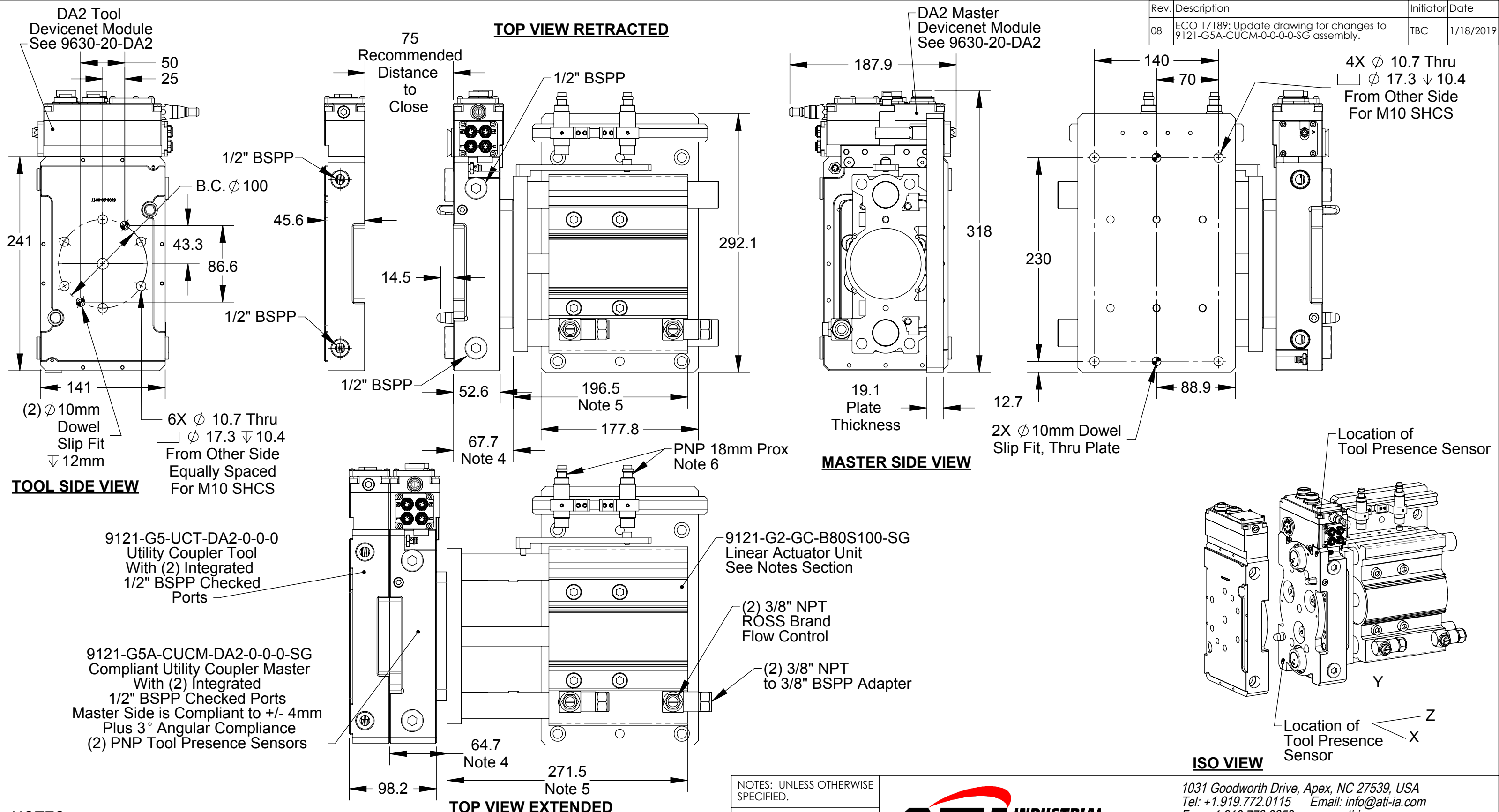


Rev.	Description	Initiator	Date
08	ECO 17189: Update drawing for changes to 9121-G5A-CUCM-0-0-0-0-SG assembly.	TBC	1/18/2019



- NOTES:**
1. Linear Actuator Unit is Driven by SMC Guided Cylinder Series MGPM
 2. For Proper Operation, Cylinder Pressure **MUST BE MAINTAINED** in order to resist the spring forces in the integrated checked Ports.
 3. Utility Coupler coupling force is approximately 625lbs at 80 psi. Care is needed to accomodate these forces in the design of the mating customer fixture.
 4. Master side coupler body compresses 2mm-4mm when coupled.
 5. Max cylinder stroke is 100mm. Recommended master to tool spacing is 75mm.
 6. Position of cylinder proxes are adjustable once installed.
 7. Tool Presence Sensors are Turck PNP 8mm.

NOTES: UNLESS OTHERWISE SPECIFIED.
DO NOT SCALE DRAWING. ALL DIMENSIONS ARE IN MILLIMETERS.



1031 Goodworth Drive, Apex, NC 27539, USA
Tel: +1.919.772.0115 Email: info@ati-ia.com
Fax: +1.919.772.8259 www.ati-ia.com
ISO 9001 Registered Company

PROPERTY OF ATI INDUSTRIAL AUTOMATION, INC. NOT TO BE REPRODUCED IN ANY MANNER EXCEPT ON ORDER OR WITH PRIOR WRITTEN AUTHORIZATION OF ATI.

DRAWN BY: Dan Norton, 6/16/09		TITLE	
CHECKED BY: D. Swanson, 6/16/09		G5 Compliant Utility Coupler, (2) 1/2" BSPP Checked Ports, (2) PNP Tool Presence Sensors	
PROJECT # 090616-2	SHEET 1 OF 1	SCALE 1:4	REVISION 08
		SIZE B	DRAWING NUMBER 9230-20-2979

