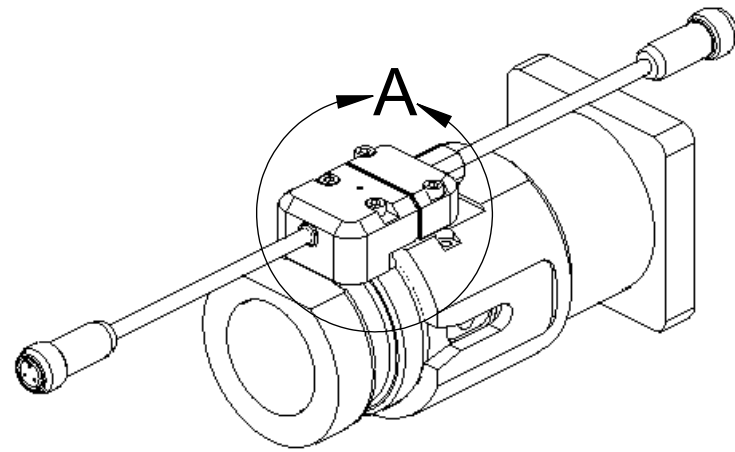
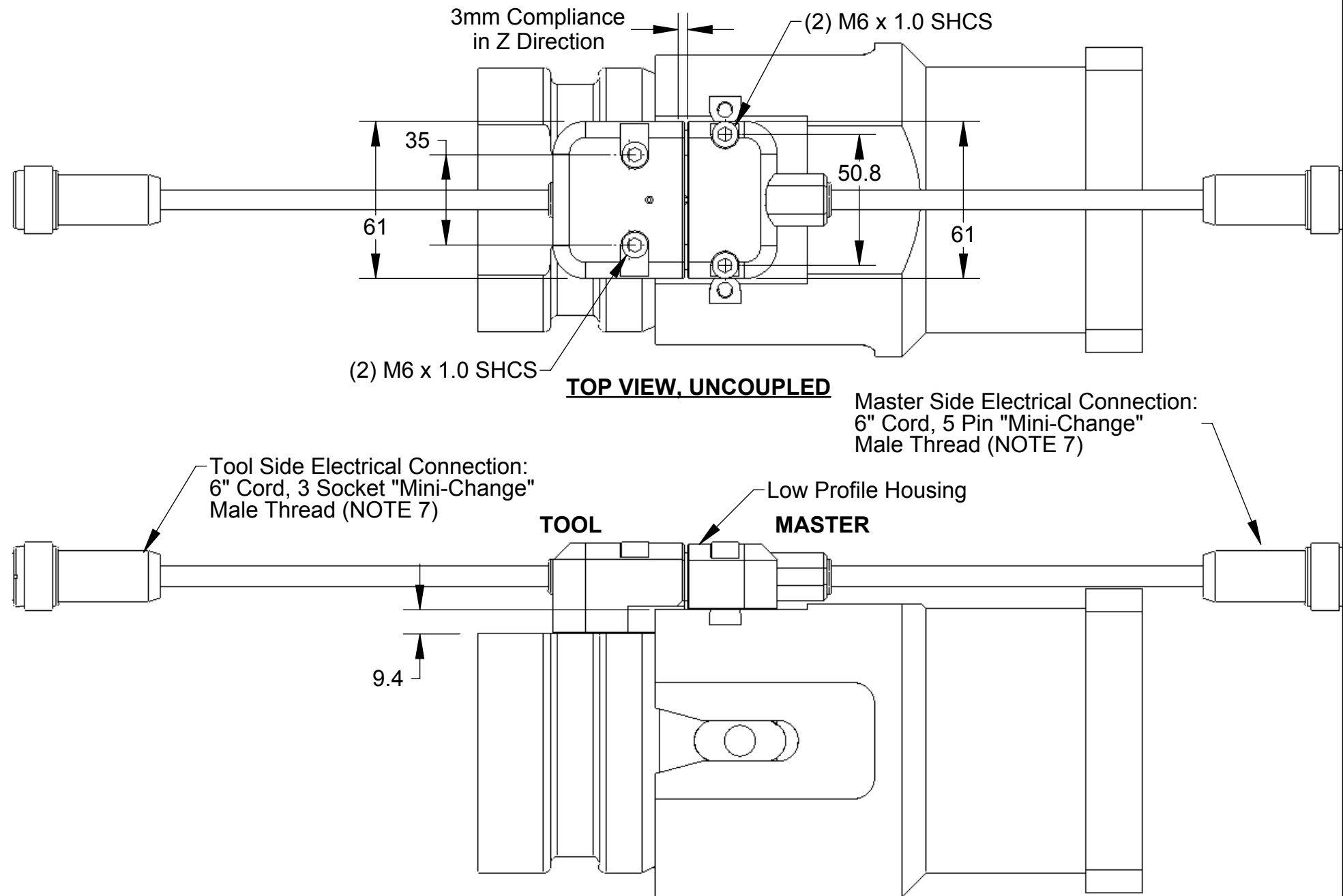
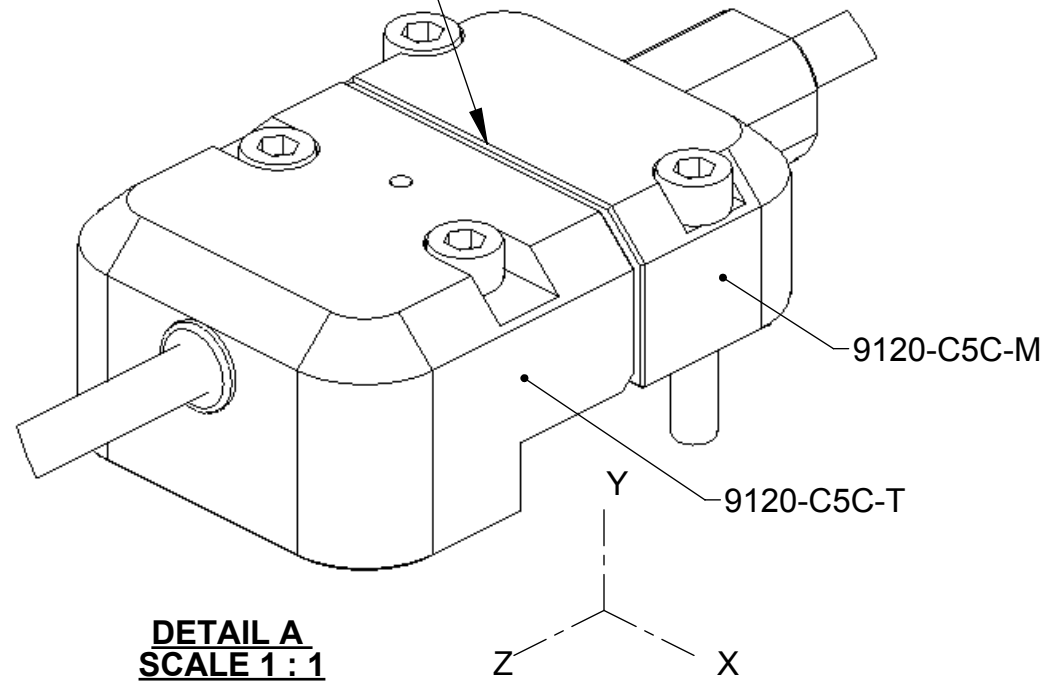


Rev.	Description	Initiator	Date
02	Drawing Update, Add Sht 2	DAN	10/24/07
03	Drawing Updated to show Correct Bilsing Coupler Mount	DAN	10/31/07
04	Replaced Tool side's male pin cordset with a female socket version. Added Threaded Unions for male thread modification to both cordsets.	MJG	12/3/2007
05	9120-C5C-M modified for a 1.3mm compliance gap with 9120-C5C-T when Bilsing Coupler is coupled.	MJG	9/16/2009



Master Module is compliant approx. 1.5mm in any direction in X-Y Plane



NOTES:

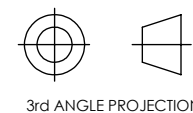
1. This drawing shows a proposal for electrical module compatible with Bilsing Manual Couplers.
2. Master Side Part Number: 9120-C5C-M
3. Tool Side Part Number: 9120-C5C-T
4. Master side is compliant by approximately 1.5mm in X-Y plane and 3mm in Z direction. Compliance limits are subject to change per customer request.
5. Master Side Compliant Unit returns to center repeatably upon de-coupling.
6. Module mounting features are subject to change pending further information from customer.
7. Cordset connectors come stock with female thread which is modified to male thread with a threaded union.

NOTES: UNLESS OTHERWISE SPECIFIED
 DO NOT SCALE DRAWING. DRAWN IN SOLIDWORKS.
 ALL DIMENSIONS ARE IN MILLIMETERS.



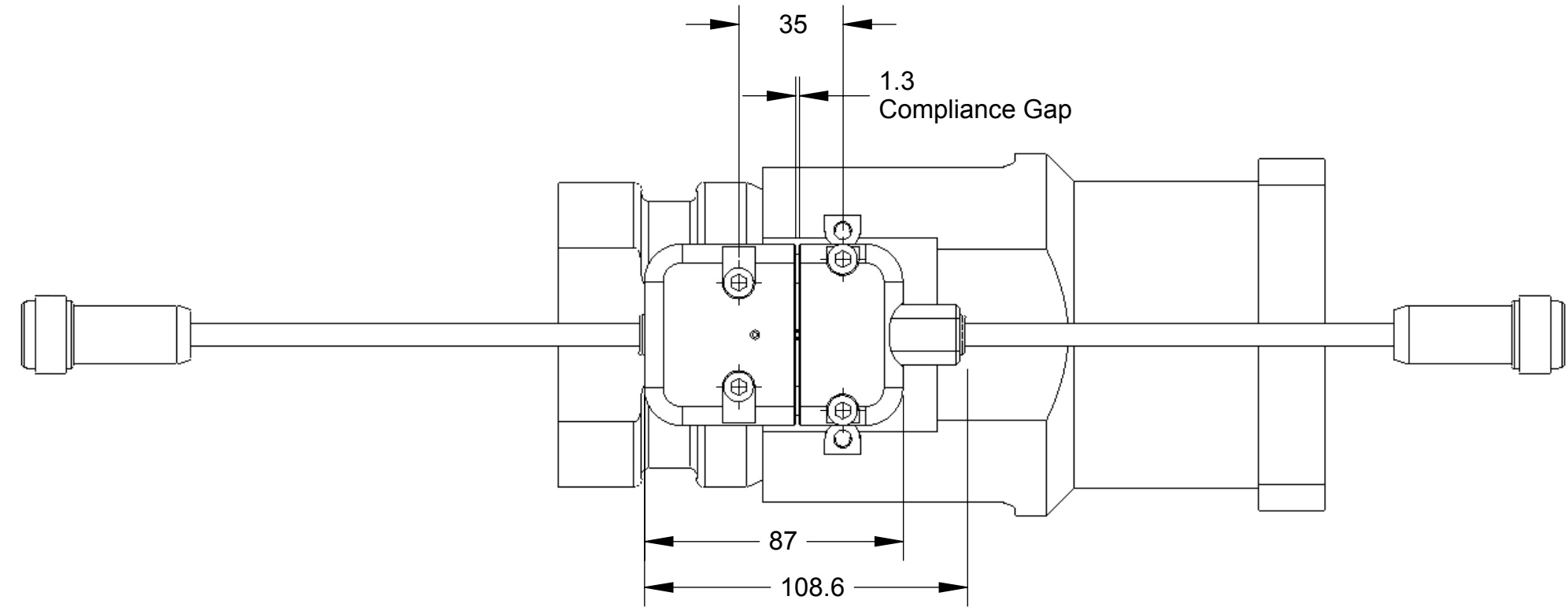
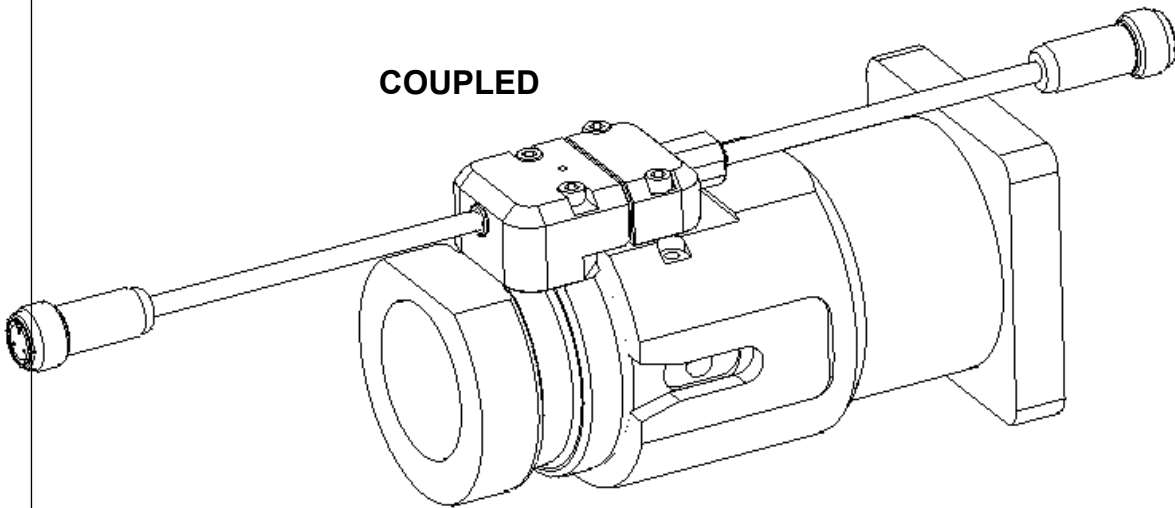
1031 Goodworth Drive, Apex, NC 27539, USA
 Tel: +1.919.772.0115 Email: info@ati-ia.com
 Fax: +1.919.772.8259 www.ati-ia.com
 ISO 9001 Registered Company

DRAWN BY: Dan Norton 10/18/07	TITLE: C5 Style Compliant Electrical Module		
CHECKED BY: M. Gala, 11/30/07	SCALE: 1:2	SIZE: B	DRAWING NUMBER: 9230-20-2667-05
WEIGHT LBS: -----	PRODUCT RELEASE # 071009-1		DATE: _____
ASSEMBLY REF:	SHEET 1		OF 2



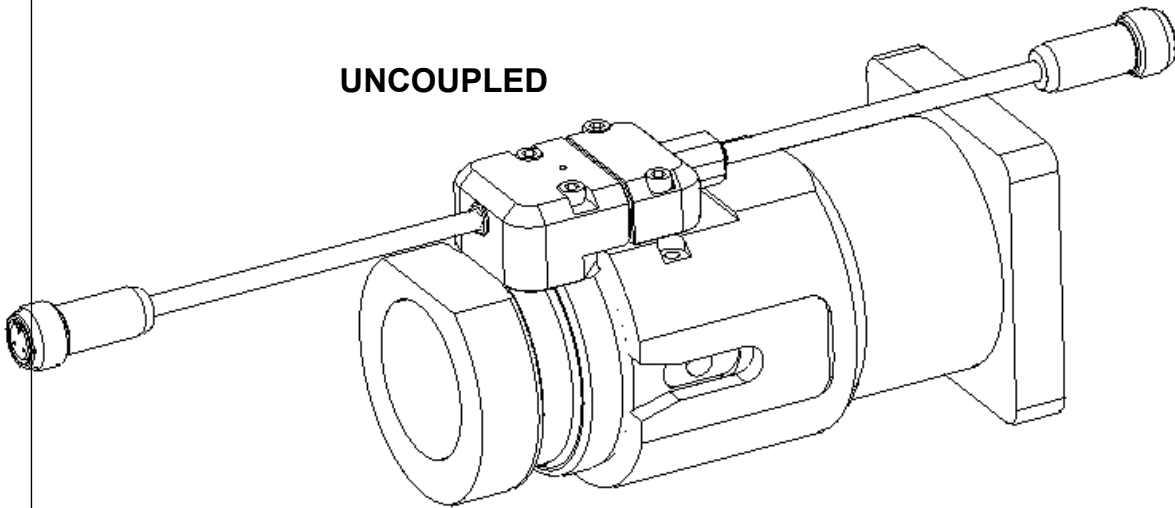
Rev.	Description	Initiator	Date
-	See Sheet1	-	-

COUPLED



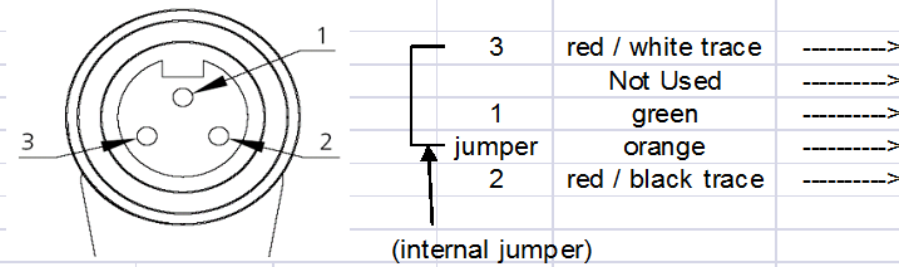
TOP VIEW, COUPLED

UNCOUPLED



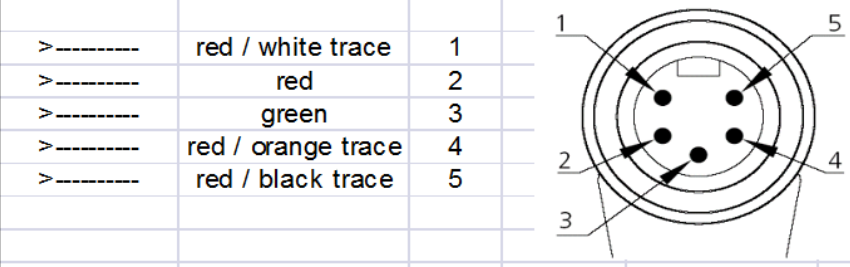
TOOL

Cordset Pinout Diagram
 Manufacturer: Brad Harrison / Woodhead
 Part No.: 103000A03F030
 3 Socket Female Straight Connector, Mini-Change
Note: Female thread of connector is modified to be a male thread using Threaded Union (Brad Harrison P/N 55-0426).



MASTER

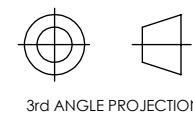
Cordset Pinout Diagram
 Manufacturer: Brad Harrison / Woodhead
 Part No.: 105002A03F030
 5 Pin Male Straight Connector, Mini-Change
Note: Female thread of connector is modified to be a male thread using Threaded Union (Brad Harrison P/N 55-0426).



NOTES: UNLESS OTHERWISE SPECIFIED
 DO NOT SCALE DRAWING. DRAWN IN SOLIDWORKS.
 ALL DIMENSIONS ARE IN MILLIMETERS.



1031 Goodworth Drive, Apex, NC 27539, USA
 Tel: +1.919.772.0115 Email: info@ati-ia.com
 Fax: +1.919.772.8259 www.ati-ia.com
 ISO 9001 Registered Company



DRAWN BY: Dan Norton 10/18/07		TITLE: C5 Style Compliant Electrical Module	
CHECKED BY: M. Gala, 11/30/07		SCALE: 1:2	DRAWING NUMBER: 9230-20-2667-05
WEIGHT LBS: -----		SIZE: B	DATE: PRODUCT RELEASE # 071009-1
ASSEMBLY REF:		SHEET 2 OF 2	