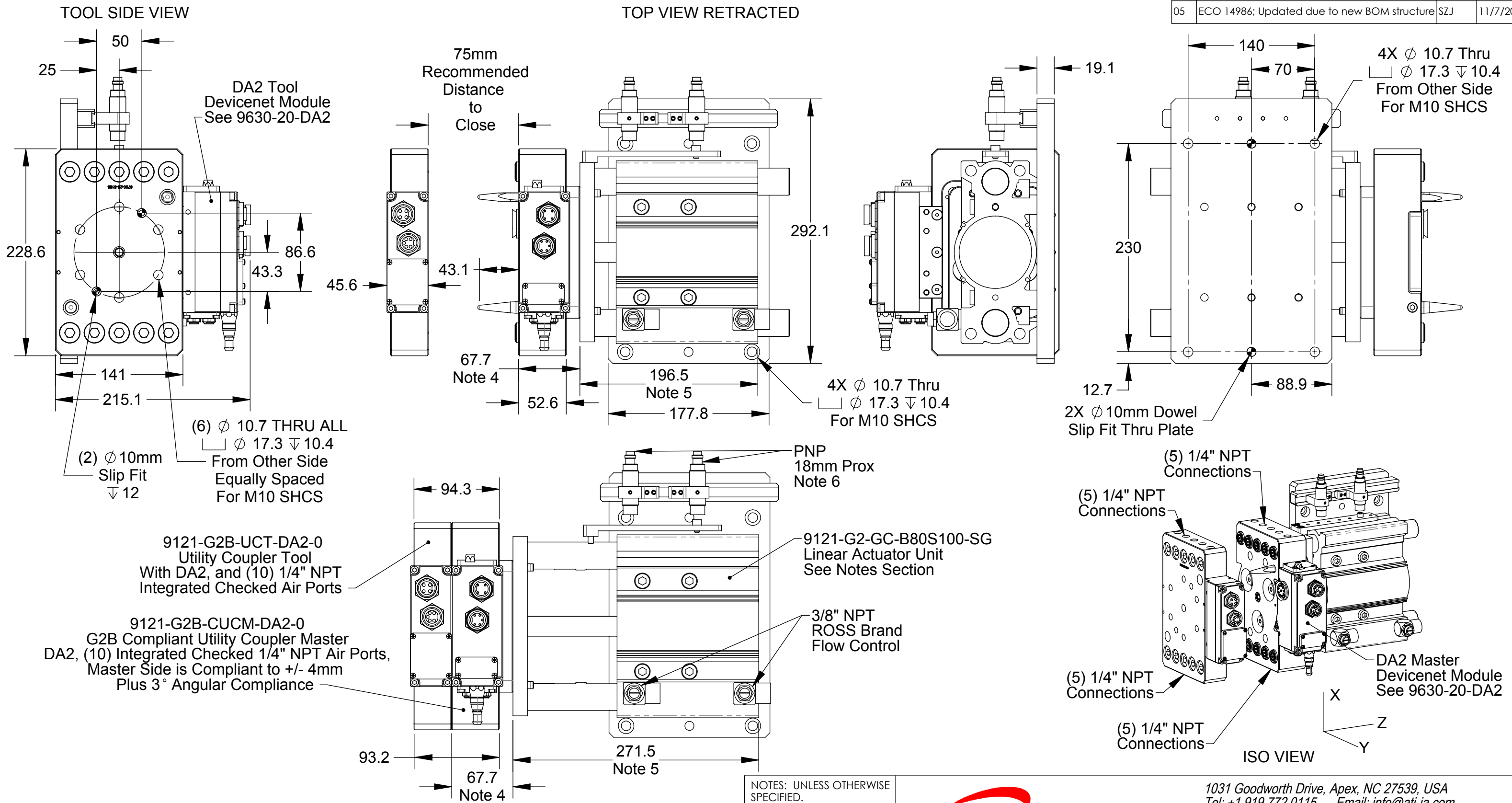


Rev.	Description	Initiator	Date
05	ECO 14986; Updated due to new BOM structure	SZJ	11/7/2016



- NOTES:**
1. Drive Cylinder Assembly features SMC Guided Cylinder Series MGPM
 2. For Proper Operation, Cylinder Pressure MUST BE MAINTAINED in order to resist the spring forces in the integrated checked Ports.
 3. Utility Coupler coupling force is approximately 625lbs at 80 psi. Care is needed in accomodating this force in the mating customer fixture.
 4. Master side coupler body compresses 2mm - 4mm when coupled.
 5. Max cylinder stroke is 100mm. Recommended Master to Tool spacing is 75mm.
 6. Position of cylinder proxies are adjustable once installed.

NOTES: UNLESS OTHERWISE SPECIFIED.
DO NOT SCALE DRAWING. ALL DIMENSIONS ARE IN MILLIMETERS.



1031 Goodworth Drive, Apex, NC 27539, USA
Tel: +1.919.772.0115 Email: info@ati-ia.com
Fax: +1.919.772.8259 www.ati-ia.com
ISO 9001 Registered Company

PROPERTY OF ATI INDUSTRIAL AUTOMATION, INC. NOT TO BE REPRODUCED IN ANY MANNER EXCEPT ON ORDER OR WITH PRIOR WRITTEN AUTHORIZATION OF ATI.

DRAWN BY: Dan Norton 3/20/07		TITLE	
CHECKED BY: D. Swanson, 3/20/07		G2B Compliant Utility Coupler With 10 Port Option	
PROJECT #	-----	SCALE	1:4
SHEET	1 OF 1	SIZE	B
		DRAWING NUMBER	9230-20-2572
		REVISION	05