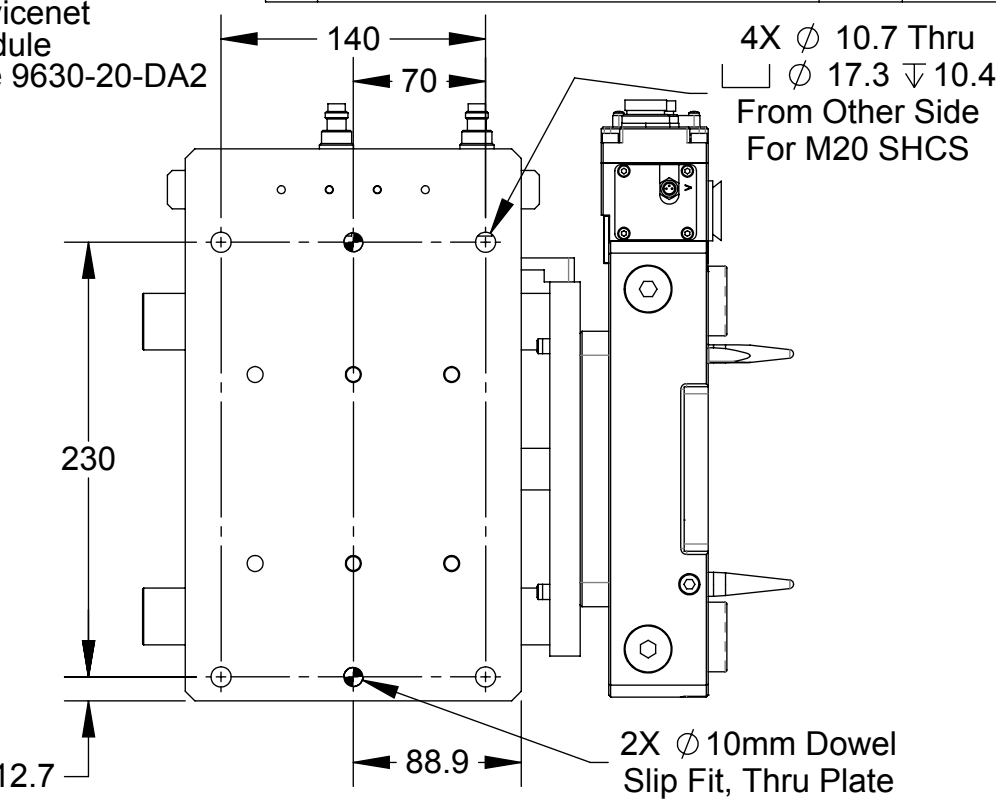
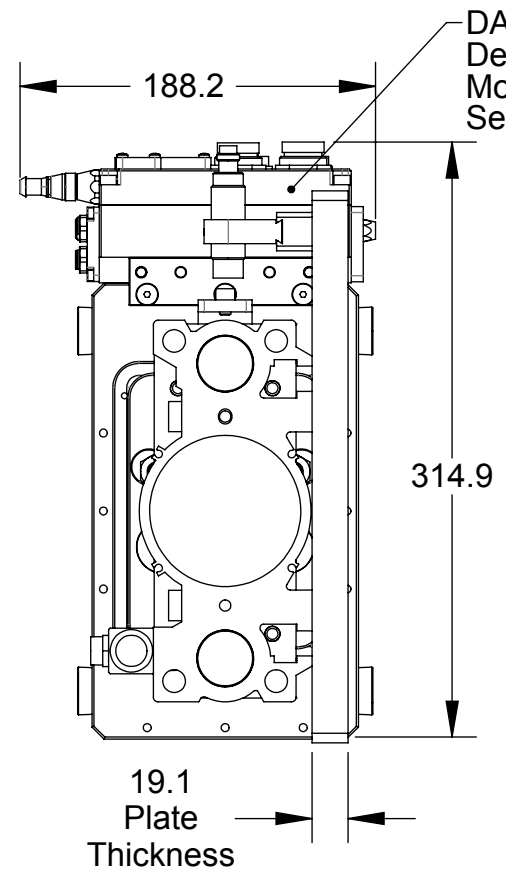
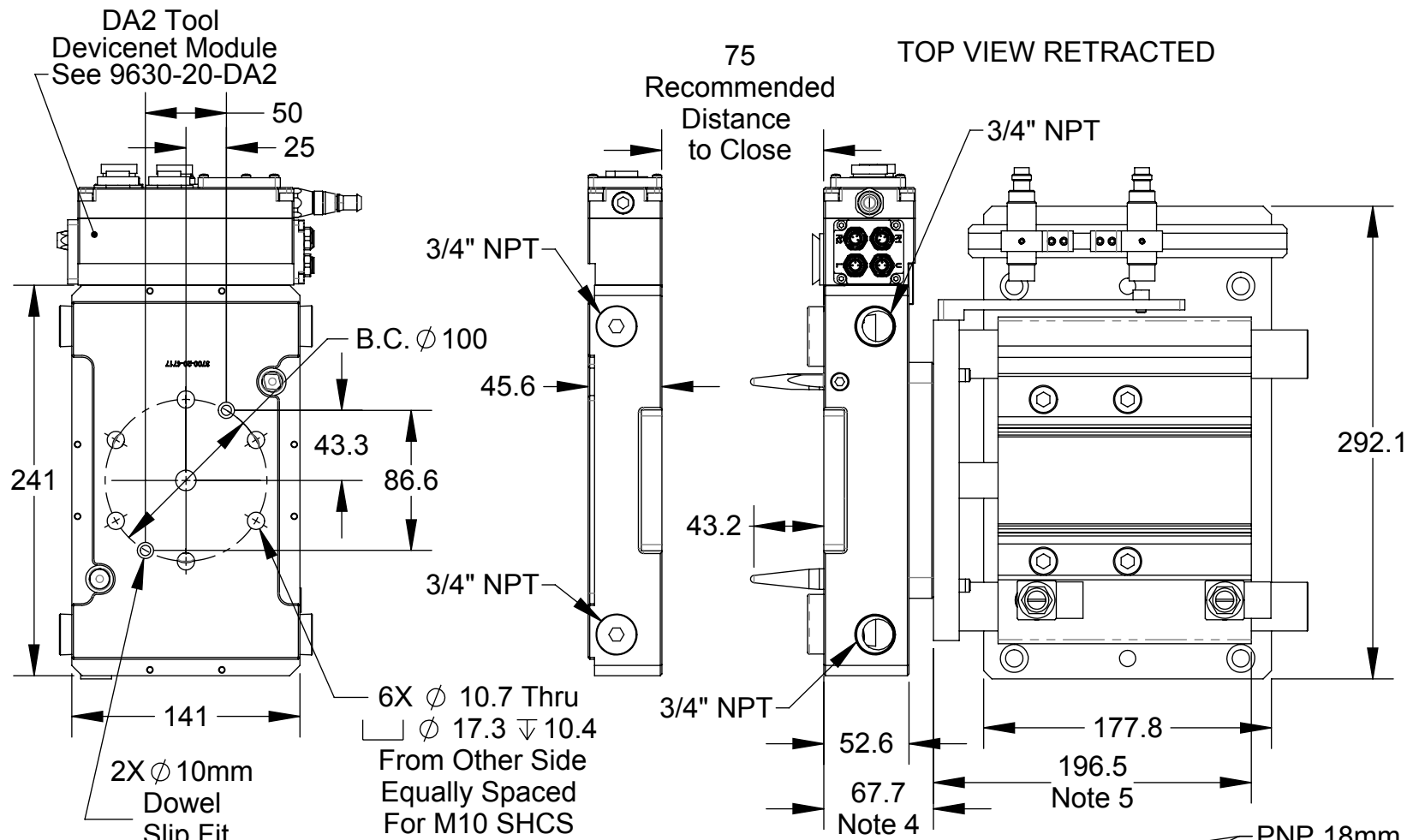


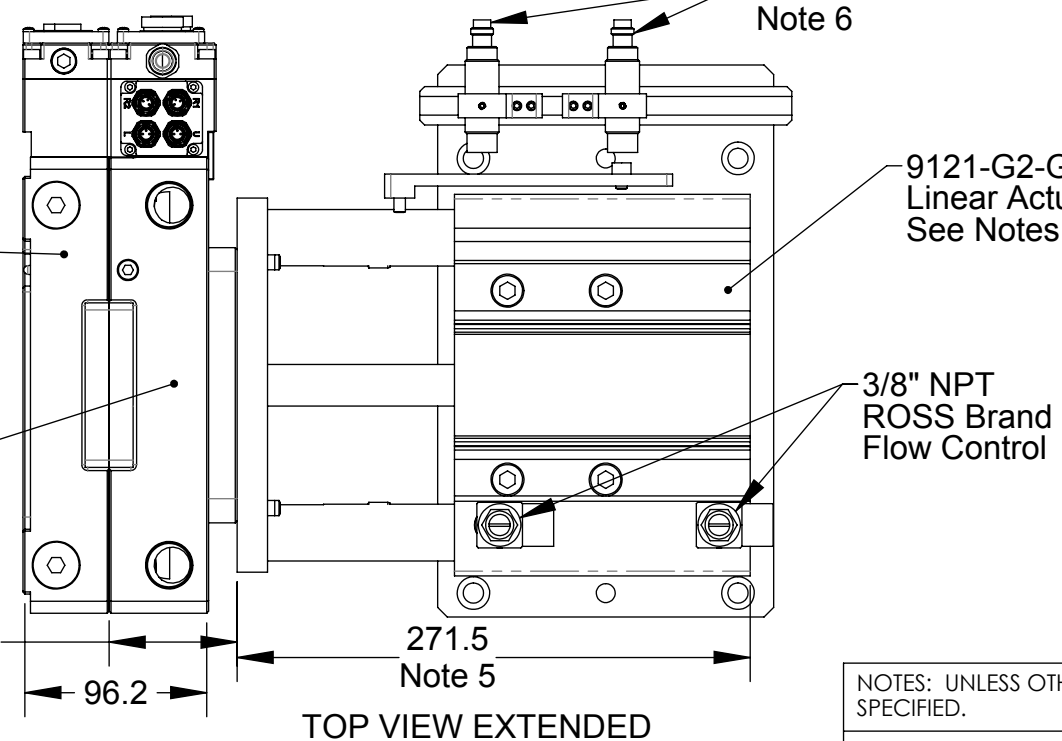
Rev.	Description	Initiator	Date
09	ECO 17187: Update drawing for changes to 9121-G2-CUCM-0-0-0-0 assembly.	TBC	1/18/2019



TOOL SIDE VIEW

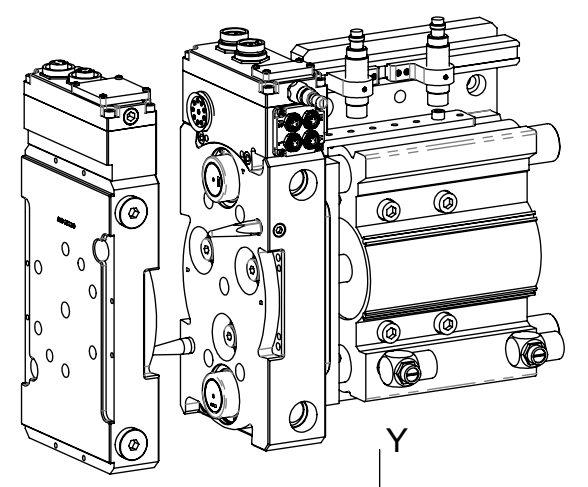
9121-G2-UCT-DA2-0-0-0  
Utility Coupler Tool  
With (2) Integrated  
3/4" NPT Checked  
Ports

9121-G2-CUCM-DA2-0-0-0  
Compliant Utility Coupler Master  
With (2) Integrated  
3/4" NPT Checked Ports  
Master Side is Compliant to +/- 4mm  
Plus 3° Angular Compliance



MASTER SIDE VIEW

CYLINDER MOUNTING PLATE VIEW



ISO VIEW

- NOTES:
- Linear Actuator Unit is Driven by SMC Guided Cylinder Series MGPM
  - For Proper Operation, Cylinder Pressure MUST BE MAINTAINED in order to resist the spring forces in the integrated 3/4" checked Ports.
  - Utility coupler coupling force is approximately 625lbs at 80 psi. Care is needed in designing mating customer fixture.
  - Master side coupler body compresses 2mm - 4mm when coupled.
  - Max Cylinder stroke is 100mm. Recommended Master to Tool spacing is 75mm.
  - Position of cylinder proxes are adjustable once installed.

NOTES: UNLESS OTHERWISE SPECIFIED.

DO NOT SCALE DRAWING. ALL DIMENSIONS ARE IN MILLIMETERS.



1031 Goodworth Drive, Apex, NC 27539, USA  
Tel: +1.919.772.0115 Email: info@ati-ia.com  
Fax: +1.919.772.8259 www.ati-ia.com  
ISO 9001 Registered Company

PROPERTY OF ATI INDUSTRIAL AUTOMATION, INC. NOT TO BE REPRODUCED IN ANY MANNER EXCEPT ON ORDER OR WITH PRIOR WRITTEN AUTHORIZATION OF ATI.

DRAWN BY: Dan Norton 1/9/05		TITLE	
CHECKED BY: D. Swanson, 6/16/05		Openrobogate Compliant Utility Coupler	
PROJECT #	050920-1	SHEET	1 OF 1
SCALE	1:4	SIZE	B
DRAWING NUMBER	9230-20-2335	REVISION	09

