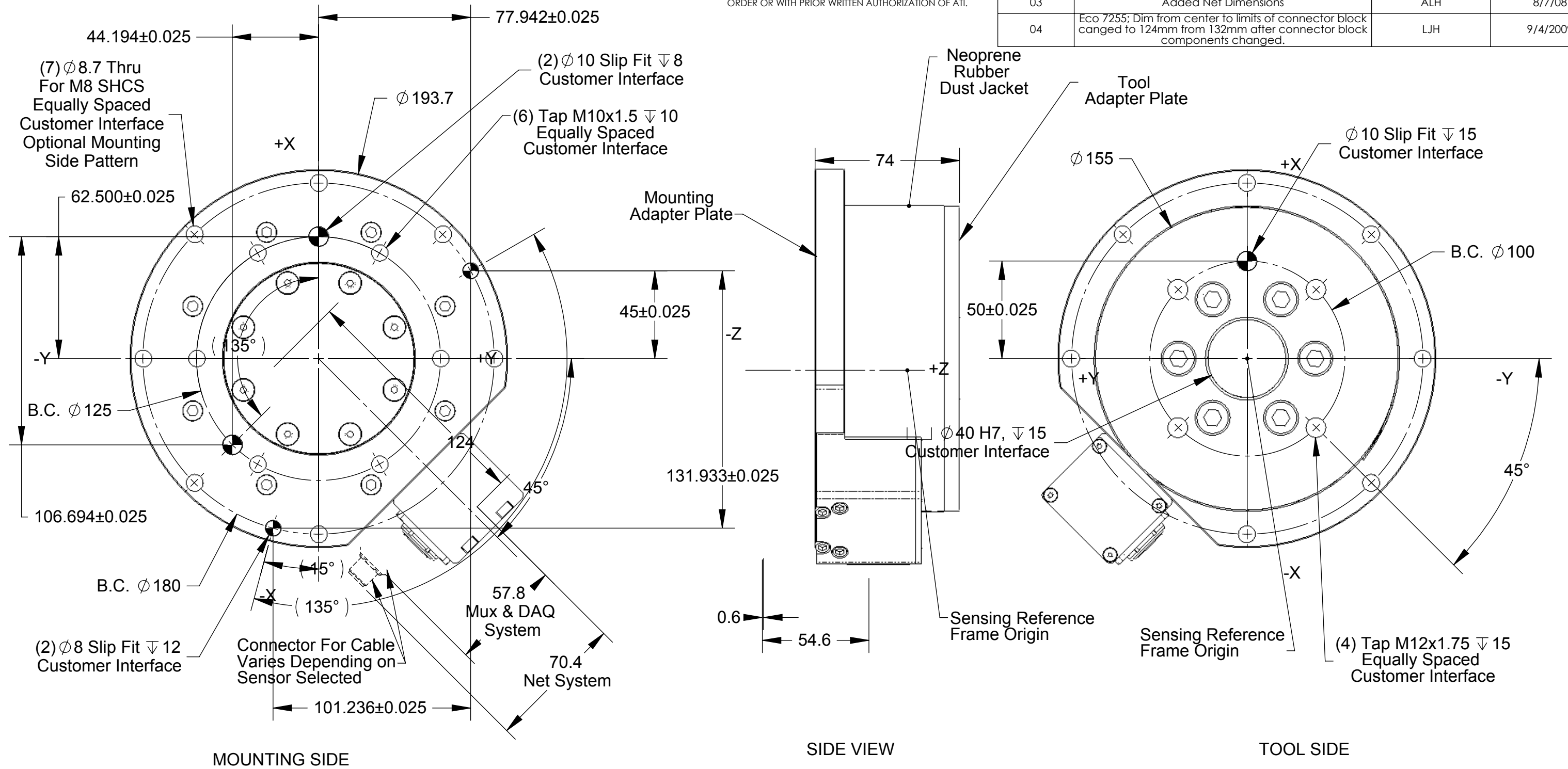
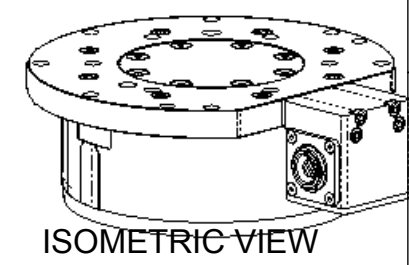


Rev.	Description	Initiator	Date
03	Added Net Dimensions	ALH	8/7/08
04	Eco 7255; Dim from center to limits of connector block changed to 124mm from 132mm after connector block components changed.	LJH	9/4/2009



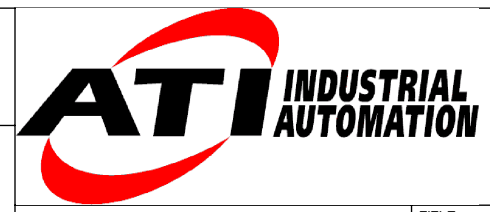
- Notes:
1. Material: Stainless Steel and Aluminum
 2. Do not touch internal electronics or instrumentation. This could damage the transducer and will void warranty.
 3. Sensing Reference Frame Origin at surface center of Tool Adapter.
 4. For best accuracy, transducer must be mounted to surfaces rigid enough to support loads without deflection.



NOTES: UNLESS OTHERWISE SPECIFIED

DO NOT SCALE DRAWING. DRAWN IN SOLIDWORKS. ALL DIMENSIONS ARE IN MILLIMETERS.

3rd ANGLE PROJECTION



1031 Goodworth Drive, Apex, NC 27539, USA
Tel: +1.919.772.0115 Email: info@ati-ia.com
Fax: +1.919.772.8259 www.ati-ia.com
ISO 9001 Registered Company

DRAWN BY: P.Sparrow, 2/16/06	TITLE IP60 Theta Transducer		
CHECKED BY: D.Norton, 2/17/06	SCALE 1:2	SIZE B	DRAWING NUMBER 9230-05-1263-04
WEIGHT LBS: 19	PRODUCT RELEASE #	DATE:	SHEET 1 OF 1
ASSEMBLY REF:			