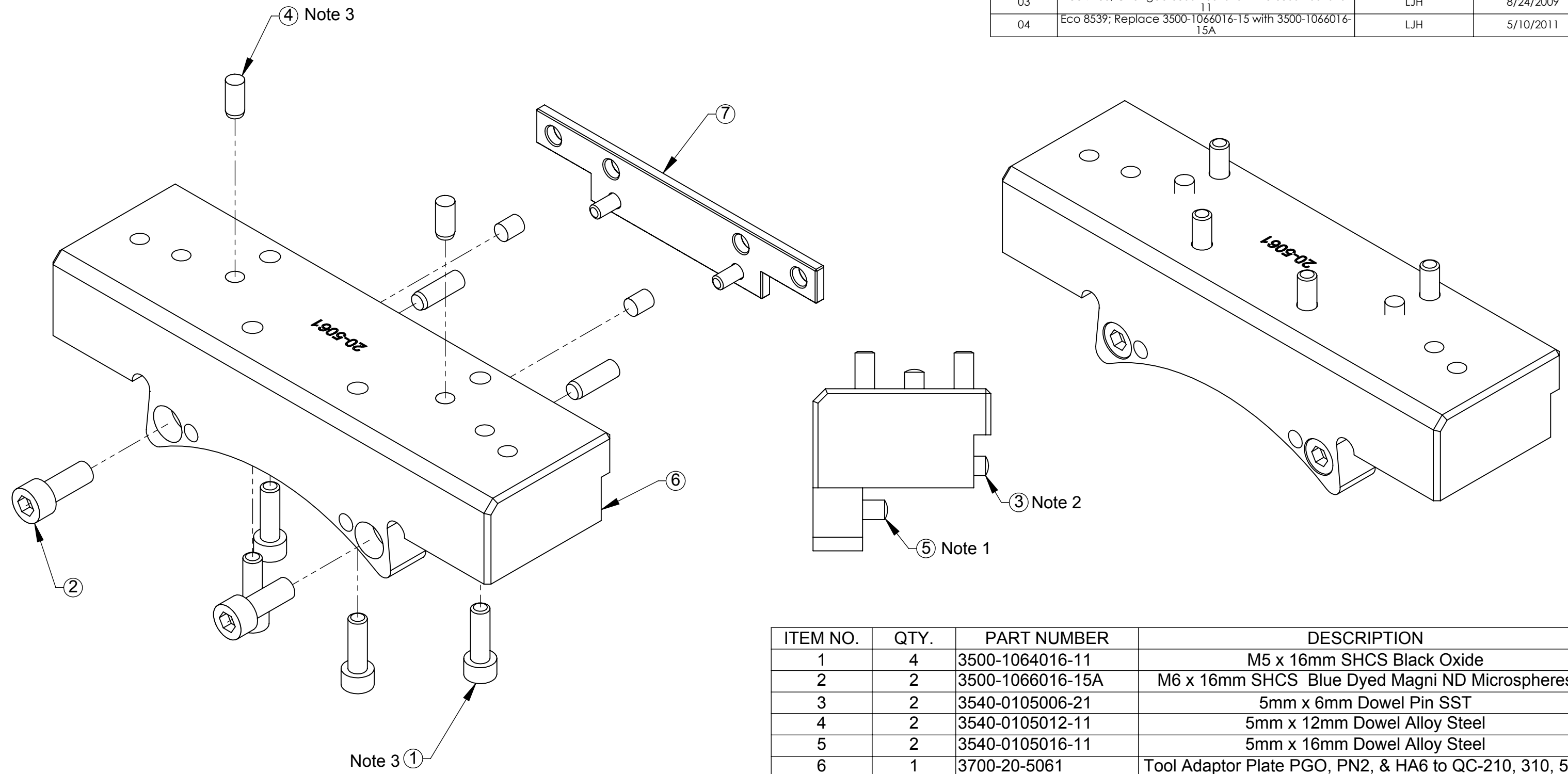


Rev.	Description	Initiator	Date
02	Released	BKD	5/1/2007
03	Eco 7253; Changed 3500-1064016-12 to 3500-1064016-11	LJH	8/24/2009
04	Eco 8539; Replace 3500-1066016-15 with 3500-1066016-15A	LJH	5/10/2011



ITEM NO.	QTY.	PART NUMBER	DESCRIPTION
1	4	3500-1064016-11	M5 x 16mm SHCS Black Oxide
2	2	3500-1066016-15A	M6 x 16mm SHCS Blue Dyed Magni ND Microspheres
3	2	3540-0105006-21	5mm x 6mm Dowel Pin SST
4	2	3540-0105012-11	5mm x 12mm Dowel Alloy Steel
5	2	3540-0105016-11	5mm x 16mm Dowel Alloy Steel
6	1	3700-20-5061	Tool Adaptor Plate PGO, PN2, & HA6 to QC-210, 310, 510
7	1	9005-20-1199	Tool Cleat Sub-Assembly

**Assembly Notes:**

1. Use tool 3810-20-1124 to install the (2) 3540-0105016-11.
2. Use tool 3810-20-1125 to install the (2) 3540-0105006-21.
3. Install (2) 3540-0105012-11 only when mounting PGO module to adapter plate assembly (refer to work instructions). If not mounting module(s), bag dowels with fasteners for customer installation.

NOTES: UNLESS OTHERWISE SPECIFIED.

DO NOT SCALE DRAWING. ALL DIMENSIONS ARE IN MILLIMETERS.



3rd ANGLE PROJECTION



1031 Goodworth Drive, Apex, NC 27539, USA  
 Tel: +1.919.772.0115 Email: info@ati-ia.com  
 Fax: +1.919.772.8259 www.ati-ia.com  
 ISO 9001 Registered Company

PROPERTY OF ATI INDUSTRIAL AUTOMATION, INC. NOT TO BE REPRODUCED IN ANY MANNER EXCEPT ON ORDER OR WITH PRIOR WRITTEN AUTHORIZATION OF ATI.

DRAWN BY: B. Digeso, 3/1/07		TITLE	
CHECKED BY: R.Heavner 3/2/07		Tool Adapter Plate, PGO, PN2, HA6	
PROJECT #	060317-1	SHEET	1 OF 1
SCALE	1:1	SIZE	B
DRAWING NUMBER	9121-JM2-T		REVISION
			04