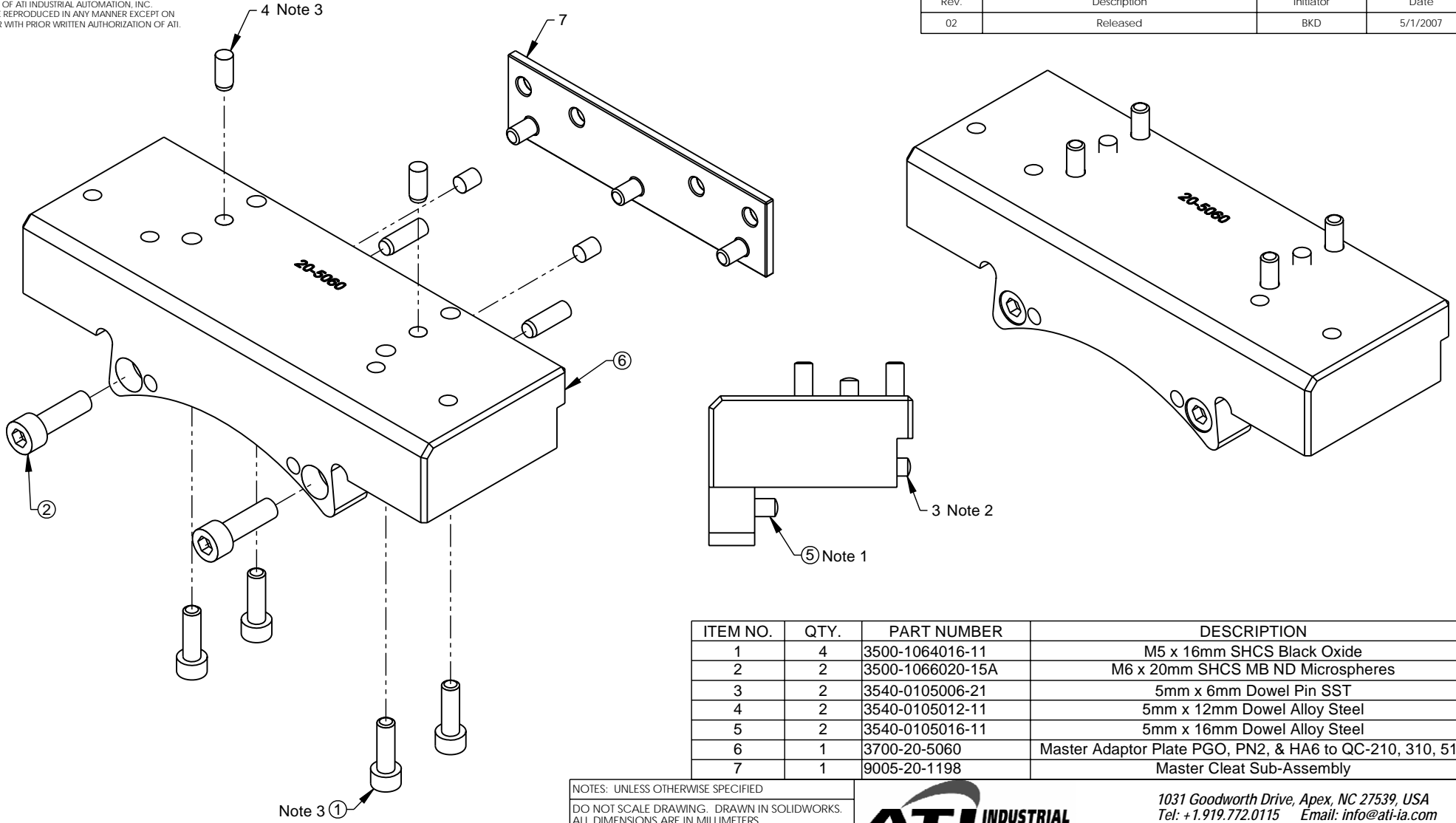


PROPERTY OF ATI INDUSTRIAL AUTOMATION, INC.
NOT TO BE REPRODUCED IN ANY MANNER EXCEPT ON
ORDER OR WITH PRIOR WRITTEN AUTHORIZATION OF ATI.

Rev.	Description	Initiator	Date
02	Released	BKD	5/1/2007

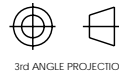


Assembly Notes:

1. Use tool 3810-20-1124 to install the (2) 3540-0105016-11.
2. Use tool 3810-20-1125 to install the (2) 3540-0105006-21.
3. Install (2) 3540-0105012-11 only when mounting PGO module to adapter plate assembly. If not mounting any module then bag dowels with fasteners for customer installation.

ITEM NO.	QTY.	PART NUMBER	DESCRIPTION
1	4	3500-1064016-11	M5 x 16mm SHCS Black Oxide
2	2	3500-1066020-15A	M6 x 20mm SHCS MB ND Microspheres
3	2	3540-0105006-21	5mm x 6mm Dowel Pin SST
4	2	3540-0105012-11	5mm x 12mm Dowel Alloy Steel
5	2	3540-0105016-11	5mm x 16mm Dowel Alloy Steel
6	1	3700-20-5060	Master Adaptor Plate PGO, PN2, & HA6 to QC-210, 310, 510
7	1	9005-20-1198	Master Cleat Sub-Assembly

NOTES: UNLESS OTHERWISE SPECIFIED
DO NOT SCALE DRAWING. DRAWN IN SOLIDWORKS.
ALL DIMENSIONS ARE IN MILLIMETERS.



3rd ANGLE PROJECTION



1031 Goodworth Drive, Apex, NC 27539, USA
Tel: +1.919.772.0115 Email: info@ati-ia.com
Fax: +1.919.772.8259 www.ati-ia.com
ISO 9001 Registered Company

DRAWN BY: B. Digeo, 3/1/07		TITLE: Master Adapter Plate, PGO, PN2, HA6	
CHECKED BY: R. Heavner, 3/2/07		SCALE: 1:1	DRAWING NUMBER: 9121-JM2-M-02
WEIGHT LBS: 1.57		SIZE: B	ASSEMBLY REF:
ASSEMBLY REF:		PRODUCT RELEASE # 060317-1	DATE: SHEET 1 OF 1