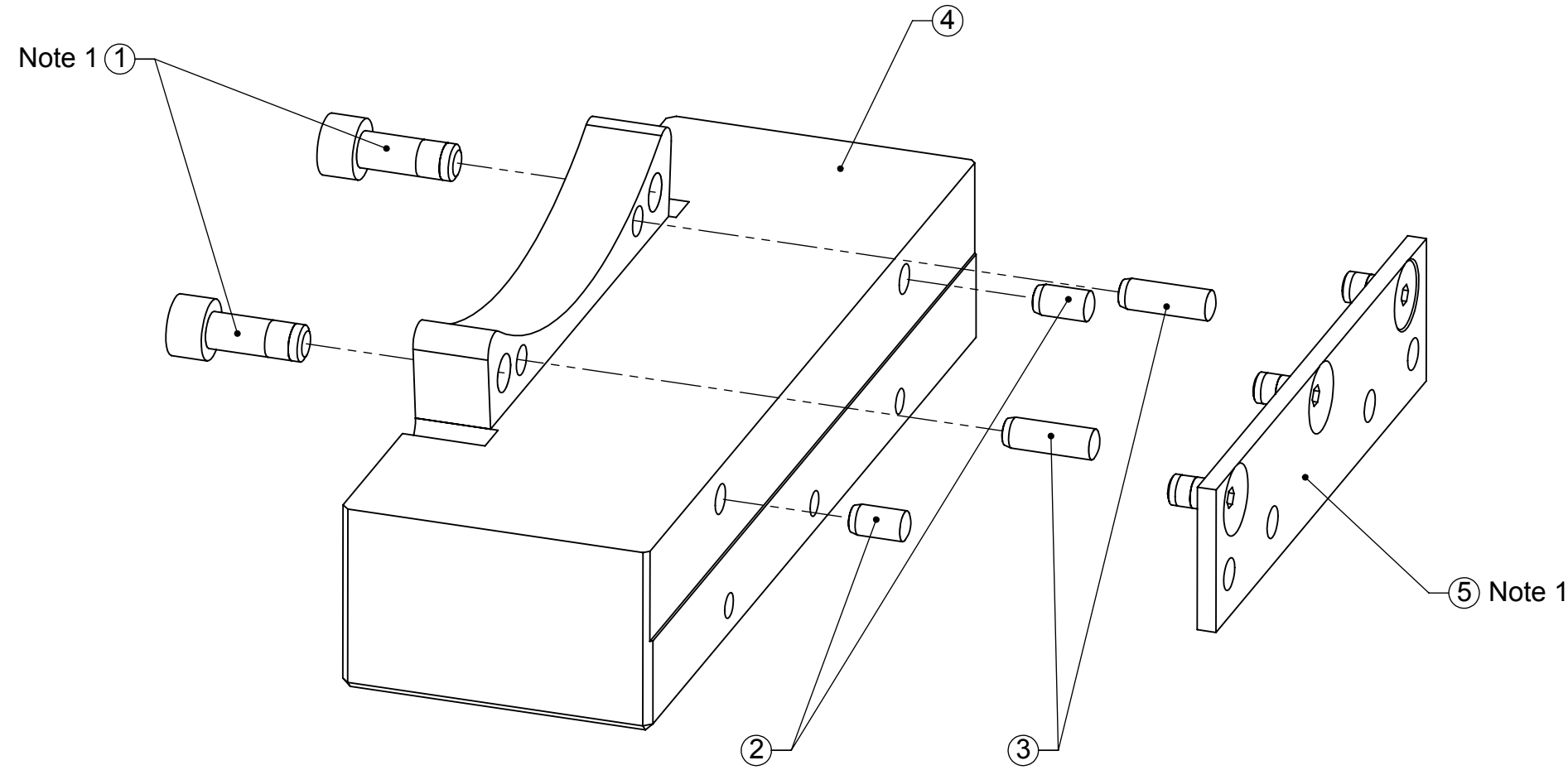
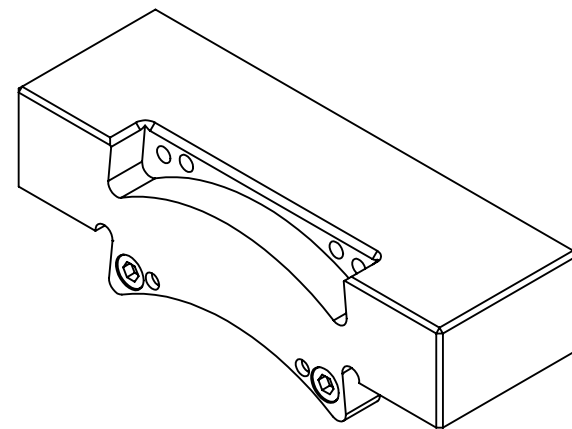


Rev.	Description	Initiator	Date
02	EC 7187: Release, No Changes	CCS	7/9/2009
03	ECO 18726; Added Note 1 callout to item 5 and updated title block	MAL	2/18/2020



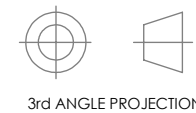
ITEM NO.	QTY.	PART NUMBER	DESCRIPTION
1	2	3500-1066016-15A	M6-1 x 16mm SHCS, Blue, Pre-Applied
2	2	3540-0105010-11	5mm x 10mm Dowel Alloy Steel
3	2	3540-0105016-11	5mm x 16mm Dowel Alloy Steel
4	1	3700-20-4981	QC-210 Master Spacer
5	1	9005-20-1198	Master Cleat Sub-Assembly



NOTES:
1. Package loosely in bag.

NOTES: UNLESS OTHERWISE SPECIFIED.

DO NOT SCALE DRAWING. ALL DIMENSIONS ARE IN INCHES.



1031 Goodworth Drive, Apex, NC 27539, USA
Tel: +1.919.772.0115 www.ati-ia.com
Fax: +1.919.772.8259 ISO 9001 Registered Company

PROPERTY OF ATI INDUSTRIAL AUTOMATION, INC. NOT TO BE REPRODUCED IN ANY MANNER EXCEPT ON ORDER OR WITH PRIOR WRITTEN AUTHORIZATION OF ATI.

DRAWN BY: K Potts 8/28/06		TITLE		
CHECKED BY: D Norton 7/31/07		QC-210 Master Adapter Assembly		
PROJECT #	060518-2	SHEET	1	OF 1
SCALE	1:2	SIZE	B	DRAWING NUMBER
				9121-JJ6-M
				REVISION
				03