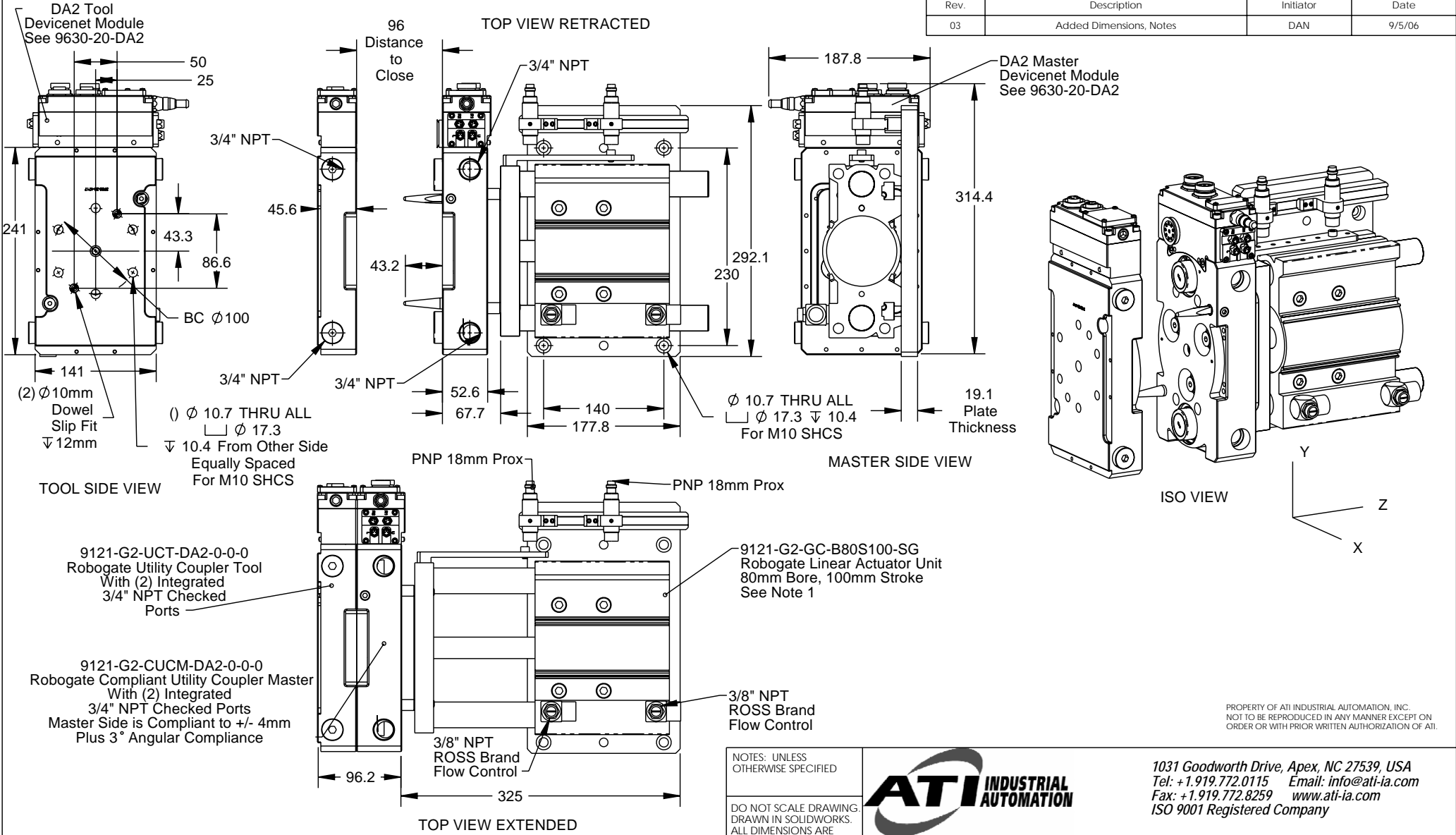


Rev.	Description	Initiator	Date
03	Added Dimensions, Notes	DAN	9/5/06



- NOTES:**
1. Linear Actuator Unit is Driven by SMC Guided Cylinder Series MGPM Design is subject to change pending further Specifications.
 2. For Proper Operation, Cylinder Pressure MUST BE MAINTAINED in order to resist the spring forces in the integrated 3/4" checked Ports.

NOTES: UNLESS OTHERWISE SPECIFIED

DO NOT SCALE DRAWING. DRAWN IN SOLIDWORKS. ALL DIMENSIONS ARE IN MILLIMETERS.

3rd ANGLE PROJECTION

1031 Goodworth Drive, Apex, NC 27539, USA
 Tel: +1.919.772.0115 Email: info@ati-ia.com
 Fax: +1.919.772.8259 www.ati-ia.com
 ISO 9001 Registered Company

DRAWN BY: Dan Norton 1/9/05	TITLE: Openrobogate Compliant Utility Coupler		
CHECKED BY: _____	SCALE: 1:4	SIZE: B	DRAWING NUMBER: 9230-20-2335-03
WEIGHT LBS: _____	PRODUCT RELEASE # 050920-1 DATE: _____ SHEET 1 OF 1		
ASSEMBLY REF: _____			

PROPERTY OF ATI INDUSTRIAL AUTOMATION, INC. NOT TO BE REPRODUCED IN ANY MANNER EXCEPT ON ORDER OR WITH PRIOR WRITTEN AUTHORIZATION OF ATI.